



# PRIME LOTS WITH VIEWS

*IDEAL PINECREST LOCATION*

1128, 1146, 1152, & 1162 PINECREST CANYON

# ALIGN

COMPLETE REAL ESTATE SERVICES

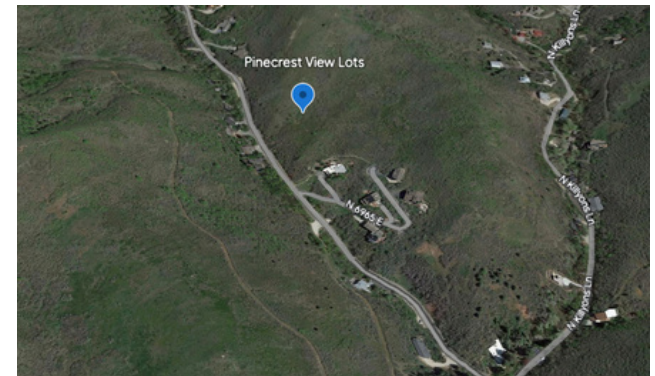
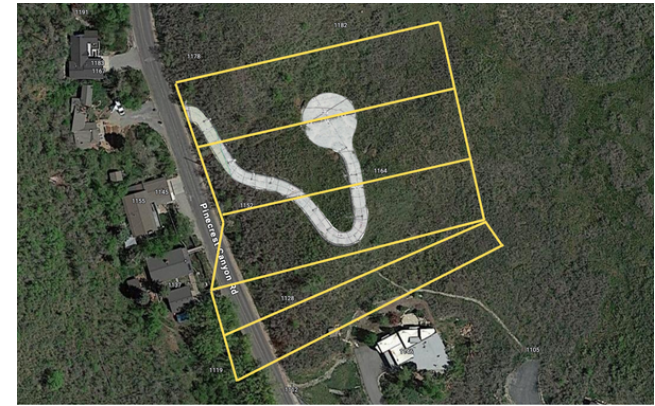
[acresutah.com](http://acresutah.com)



If you've been dreaming of a serene retreat just above Emigration Canyon, this is your chance! Don't miss the rare opportunity to own a spacious lot that backs onto open space. Each property offers breathtaking views and direct access to hiking trails right from your doorstep. It's the perfect setting for those who love to explore the outdoors. Just a short 15-minute drive from the University of Utah, 30 minutes from the airport, and 35 minutes to the world-class amenities of Park City, this location offers the best of both worlds – super convenience and a sense of being remote and above it all.

All the lots nestled in this quaint subdivision provide an unparalleled opportunity to build your dream home in a one-of-a-kind location. Each lot is over .8 of an acre with views that stretch for miles. Embrace the tranquility, privacy, and endless natural beauty this property affords. Don't wait to make it your own!

\*\*The lot lines depicted in the accompanying image are provided solely for reference purposes and general orientation. Buyers and interested parties are strongly advised to obtain independent measurements and surveys to verify the accuracy and dimensions of the property boundaries.



- MOUNTAIN VIEW LOTS
- ALL LOTS OVER .8 ACRES
- PERMITS APPROVED

- BACKING OPEN SPACE
- PANORAMIC VIEWS
- ROAD UNDERWAY

- 15 MINUTES TO THE U OF U
- 30 MINUTES TO THE AIRPORT
- 35 MINUTES TO PARK CITY



**TYLER PARRISH**  
Principal Broker  
801.815.5765  
tyler@acresutah.com

**ALIGN**  
COMPLETE REAL ESTATE SERVICES  
[pinecrestcanyon.com](http://pinecrestcanyon.com)