



## Plainview Point I Office Building – 10507 Timberwood Circle, Louisville, KY

NTS is pleased to present Plainview Point I, an exciting leasing opportunity at 10507 Timberwood Circle. Built in 1979, Plainview Point I features 2 floors with approximately 30,000 square feet of first class office space. Please see the information below for more details:

### FOR LEASE

- Class B+ 2-story Office Building & Corporate Campus
- Building Signage Available for Qualifying Lease
- Campus Setting with Outdoor Patio and Break Area
- 24-hour On-Call Maintenance Services
- Excellent Location Near I-64/I-264 & Hurstbourne/Shelbyville
- Abundant On-Site Parking
- Minutes From the Louisville International Airport
- Managed and Leased by NTS Development Company

For more information or to schedule a tour, please contact:

**Tony Fluhr, SIOR, CCIM**

Managing Director  
502.429.9820  
tfluhr@ntsdevco.com

**Mark Meredith, CCIM**

Director of Commercial Leasing  
502.429.9827  
mmeredith@ntsdevco.com

[www.ntsdevelopment.com](http://www.ntsdevelopment.com)

**NTS**



# BUILDING OVERVIEW

## SPECIFICATIONS

**Type:** Class B+ Office Building

**SF:** 30,000 SF

**Stories:** 2

**Typical Floor:** 15,000 SF

**Year Built:** 1979

**Elevators:** 1

**HVAC:** Roof Top Units & Perimeter Zone-Line Units

**Parking:** Surface, ~4.5 per 1,000 SF

## HIGHLIGHTS & AMENITIES



Excellent Location Near I-64/I-264 & Hurstbourne/Shelbyville



Minutes from the Louisville International Airport



Building Conference/Training Room



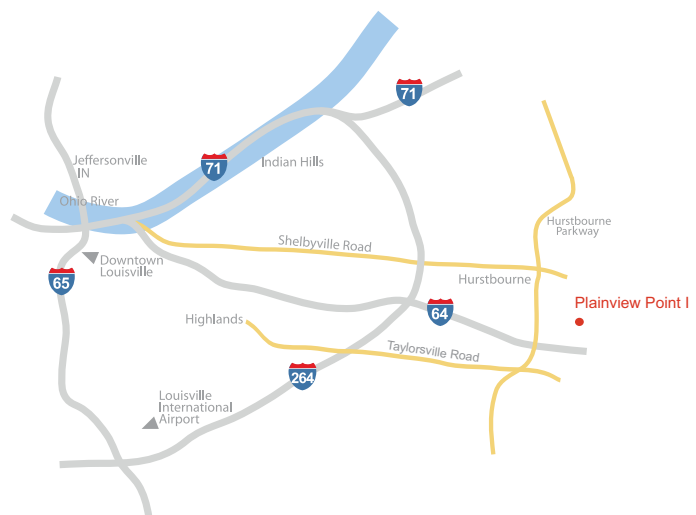
Building Fitness Center



24-hour On-Call Maintenance Services

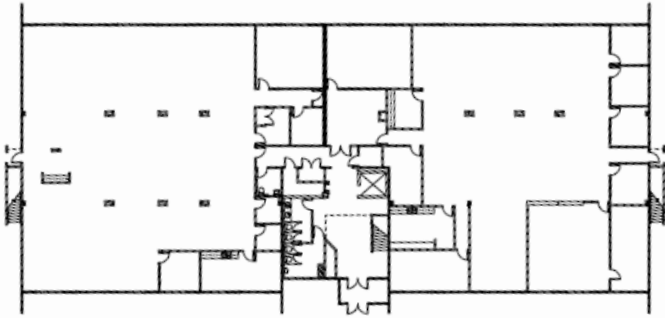


Managed and Leased by NTS Development Company

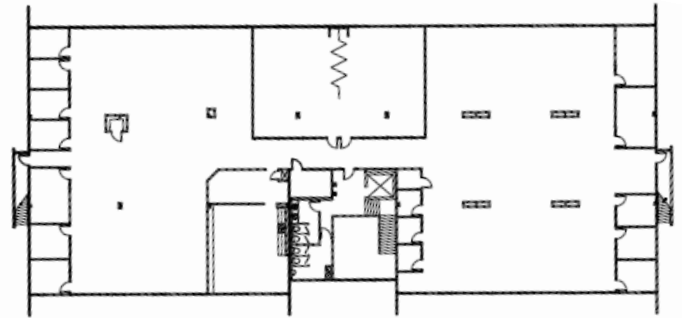


Although all information furnished regarding the property for sale, rental, or financing is from sources deemed reliable, such information has not been verified and no express representation is made nor is any to be implied as to the accuracy thereof and it is submitted subject to errors, omissions, change of price, rental or other changes or conditions, prior sale, lease financing, or withdrawal without notice and to any special conditions imposed by our principal.

# AVAILABLE FLOOR PLANS



First Floor | 14,810 RSF



Second Floor | 15,046 RSF



Although all information furnished regarding the property for sale, rental, or financing is from sources deemed reliable, such information has not been verified and no express representation is made nor is any to be implied as to the accuracy thereof and it is submitted subject to errors, omissions, change of price, rental or other changes or conditions, prior sale, lease financing, or withdrawal without notice and to any special conditions imposed by our principal.