

For Lease

373 W Palmer Ave, Unit A Glendale | CA



Presented By:

Chris Rohrer

818.624.1180

chris@pacwestonline.com

DRE#02018754

Ron Rohrer

818.309.0628

ron@pacwestonline.com

DRE#01918399

Randy Rohrer

818.244.3000

randy@pacwestonline.com

DRE#00672287

Scott Cox

818.244.3000

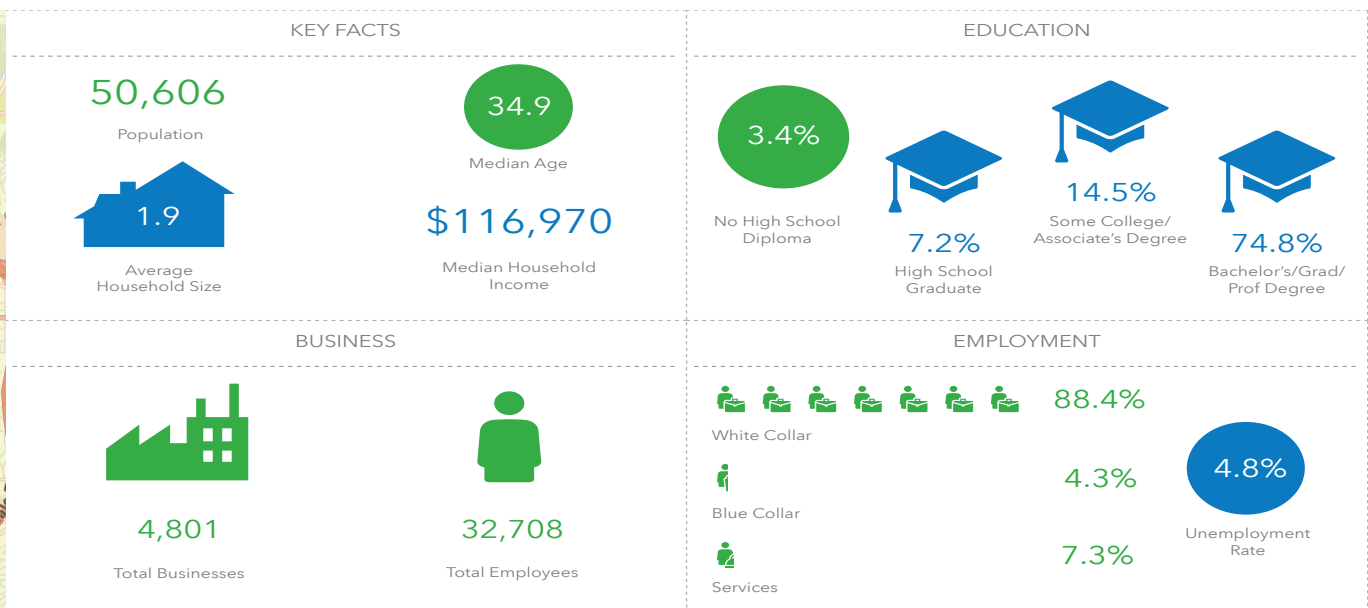
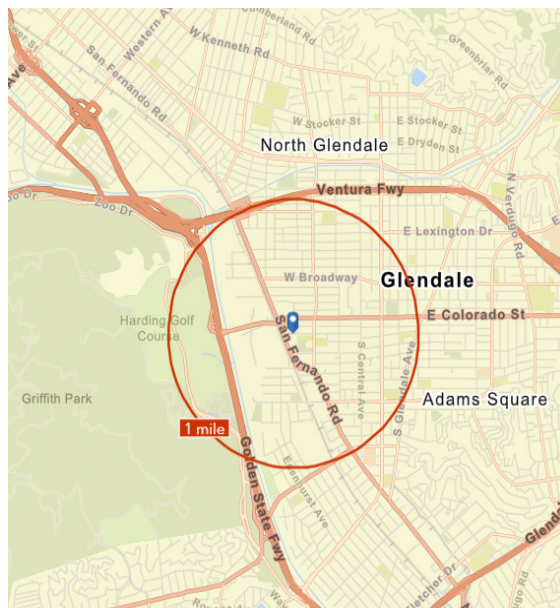
scott@pacwestonline.com

DRE#01070703



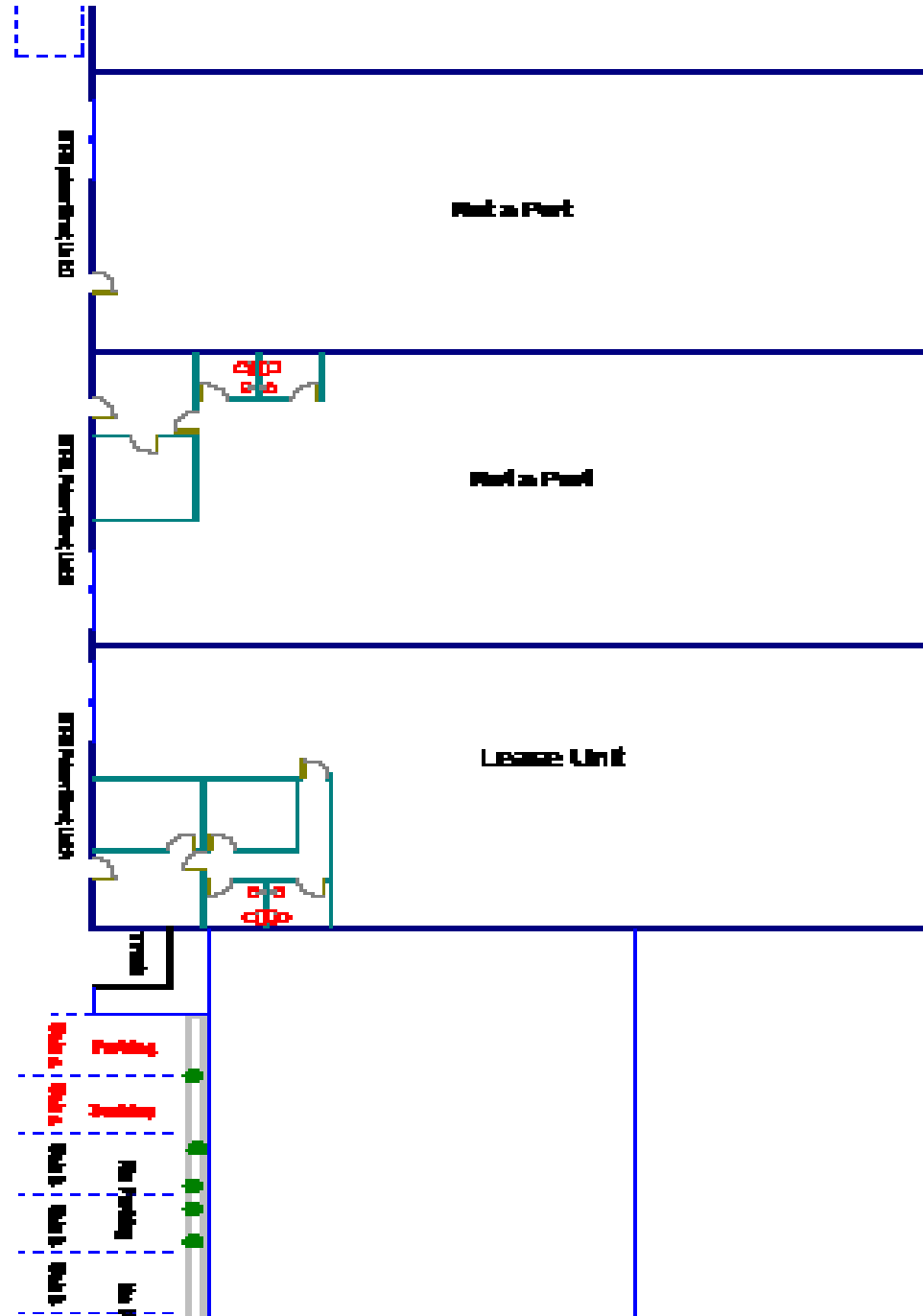
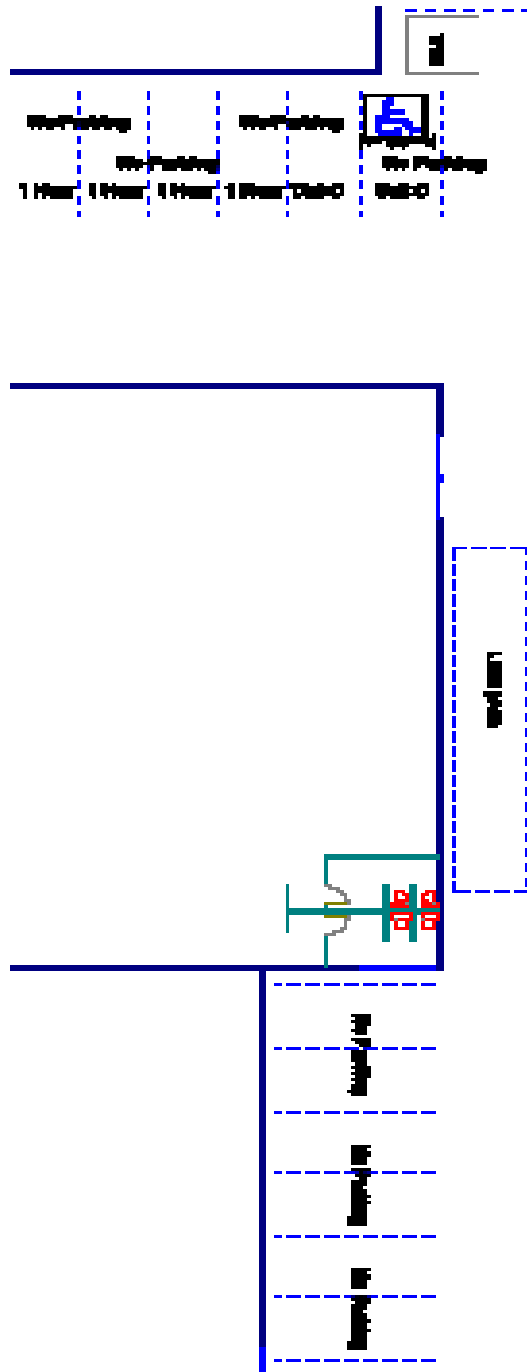
Property Information

Available SF:	4,350 SF	› Concrete block building
Asking Price:	\$7,612 (\$1.75/sf)	› 1 ground floor loading door
Land SF:	POL	› 15' minimum clearance
Parking:	4	› Fully sprinklered
Zoning:	IMU - R	› Air conditioned offices
Year Built:	1987	› Gated Parking
Power:	200 A; 240 V; 1 Ph	› Drive through truck access



The facts contained herein, while not guaranteed as to accuracy, are accurate to the best of our knowledge and belief.

Floor Plan



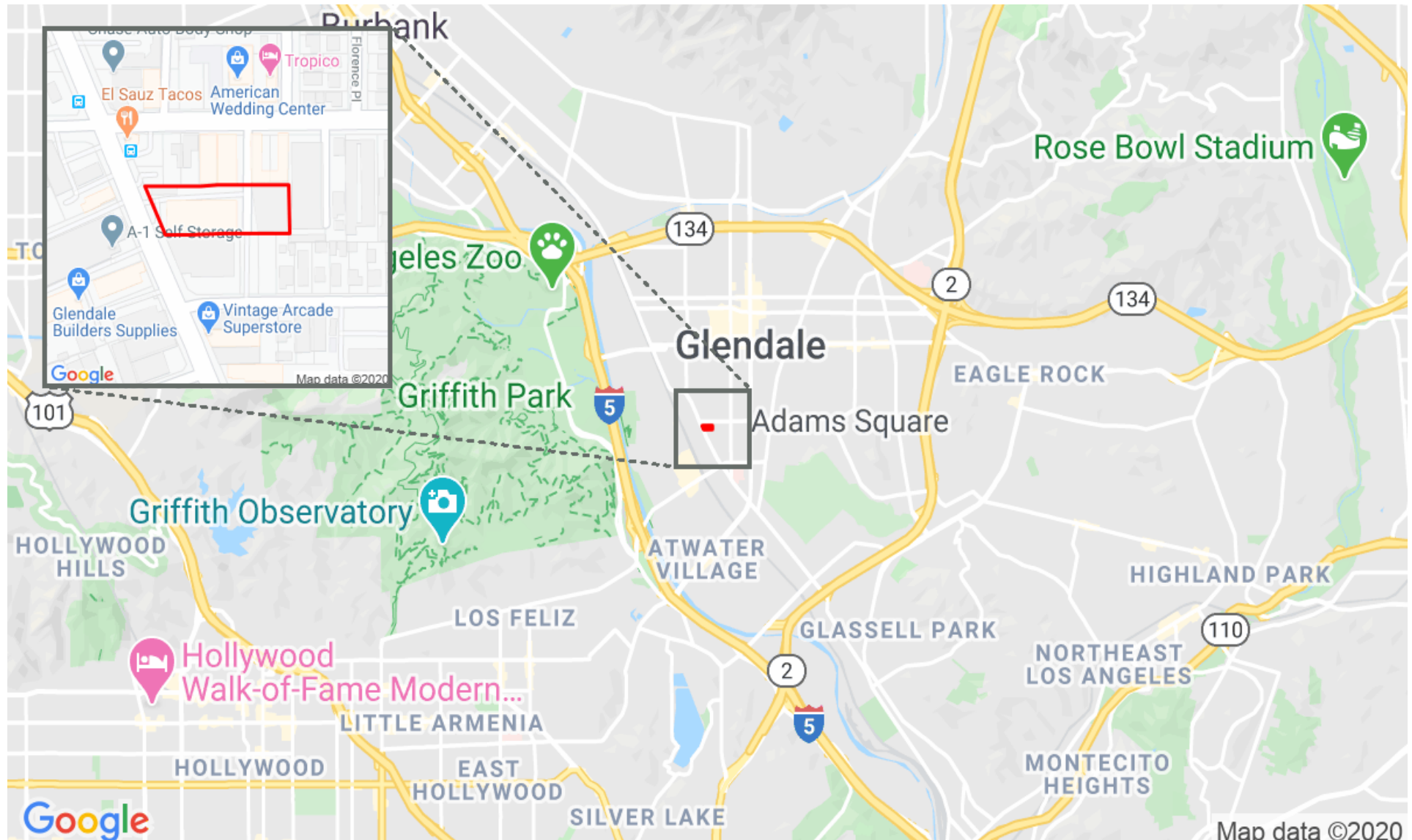
Map Location

373 W Palmer Ave



Pacific West Business Properties, Inc.

6624 San Fernando Road Glendale, CA 91201 | 818-244-3000



Additional Photos

