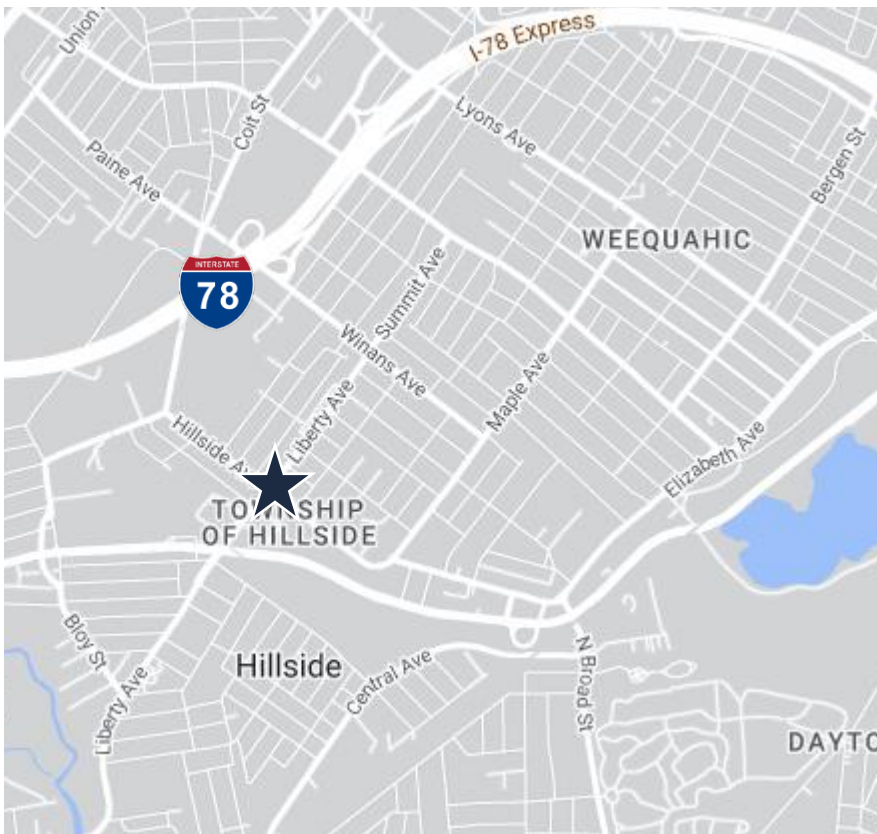




Seller Financing Available



Specifications

±8,100 SF
TOTAL BUILDING SIZE

±0.13 AC (Block 1101, Lot 1)
LOT SIZE

±13'
CEILING HEIGHT

3 DI Overhead Roll Up Doors
LOADING

RC
ZONING

\$11,106.02 (2024)
TAXES

0.7 Miles to Route 22

1.3 Miles to I-78

3.6 Miles to US Hwy 1 & 9

6.0 Miles to Newark Airport

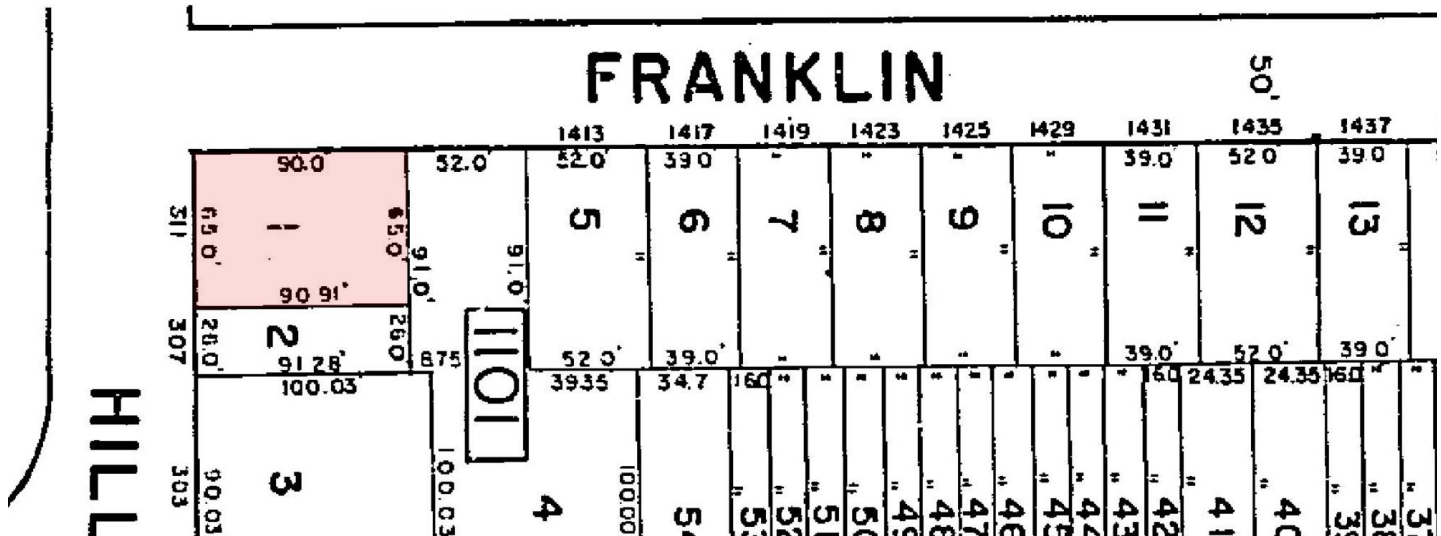
5.6 Miles to Ports Newark/Elizabeth
ACCESSIBILITY

For additional property information or to arrange an inspection, please contact the exclusive brokers:

Tamara J. Blau
Senior Director
973.379.6644 x 148
TBlau@blauberg.com

Brad Jacobs
Senior Director
973.379.6644 x 143
BJacobs@blauberg.com

Ashley Rosa
Associate
973.379.6644 x 230
ARosa@blauberg.com

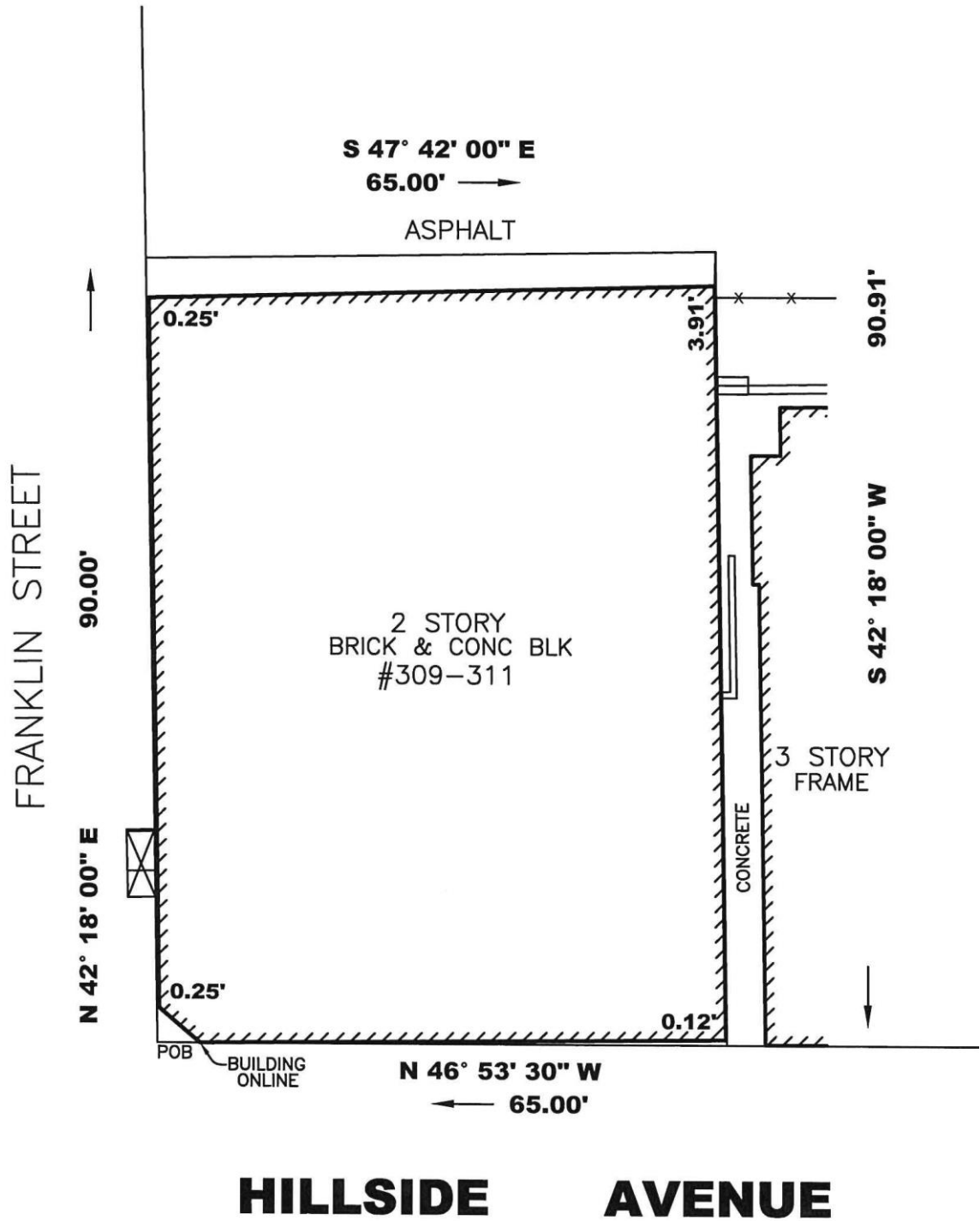


For additional property information or to arrange an inspection, please contact the exclusive brokers:

Tamara J. Blau
Senior Director
973.379.6644 x 148
TBlau@blauberg.com

Brad Jacobs
Senior Director
973.379.6644 x 143
BJacobs@blauberg.com

Ashley Rosa
Associate
973.379.6644 x 230
Arosa@blauberg.com

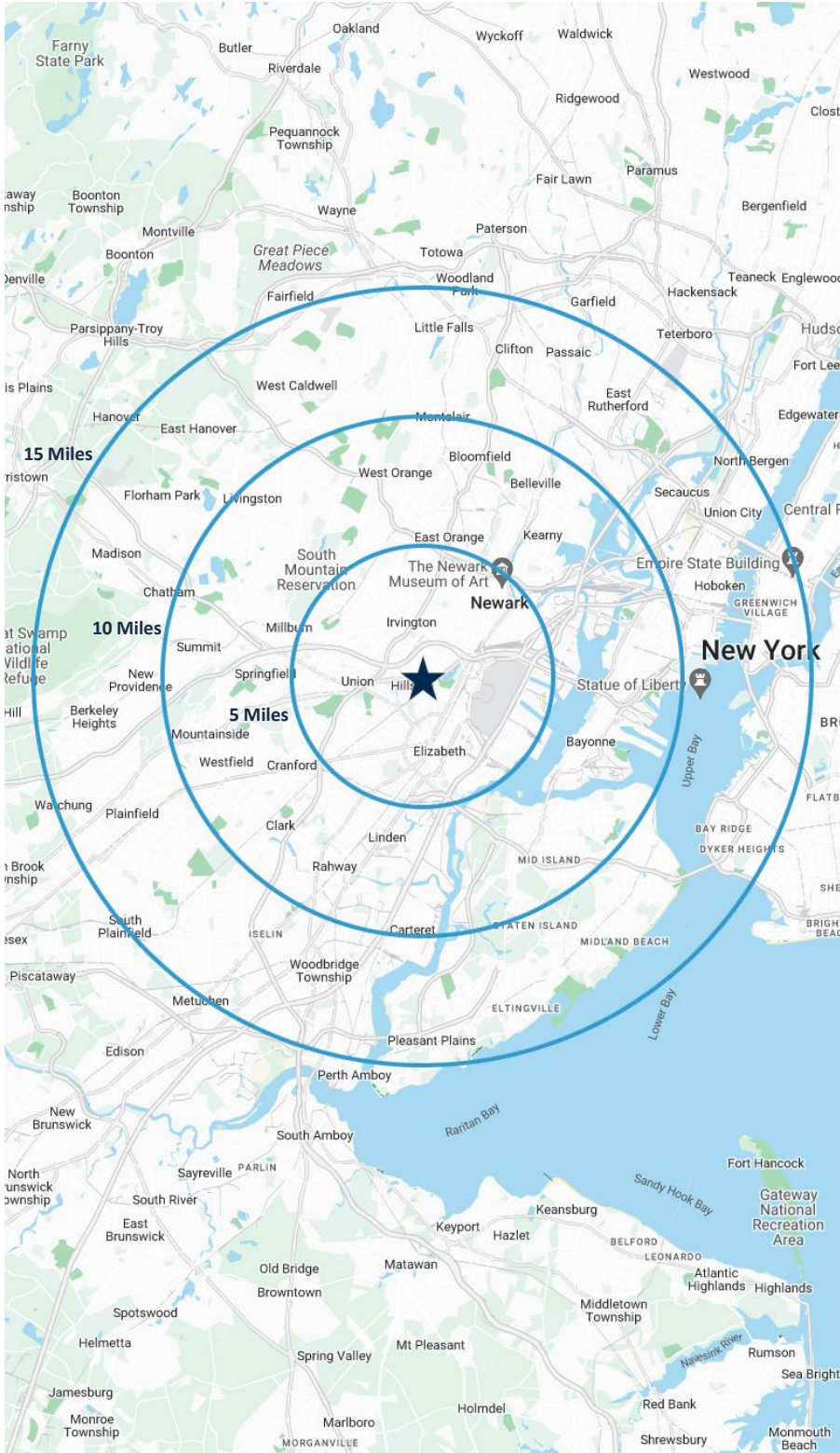


For additional property information or to arrange an inspection, please contact the exclusive brokers:

Tamara J. Blau
Senior Director
973.379.6644 x 148
TBlau@blauberg.com

Brad Jacobs
Senior Director
973.379.6644 x 143
BJacobs@blauberg.com

Ashley Rosa
Associate
973.379.6644 x 230
Arosa@blauberg.com



5 MILES

- Total Population: 769,322
- Households: 280,404
- Median Household Income: \$78,950
- Average Household Size: 2.7
- Transportation to Work: 375,404
- Labor Force: 610,207

10 MILES

- Total Population: 2.09M
- Households: 778,359
- Median Household Income: \$101,525
- Average Household Size: 2.6
- Transportation to Work: 1.04M
- Labor Force: 1.67M

15 MILES

- Total Population: 5.8M
- Households: 2.33M
- Median Household Income: \$112,252
- Average Household Size: 2.4
- Transportation to Work: 3.03M
- Labor Force: 4.74M

For additional property information or to arrange an inspection, please contact the exclusive brokers:

Tamara J. Blau
Senior Director
973.379.6644 x 148
TBlau@blauberg.com

Brad Jacobs
Senior Director
973.379.6644 x 143
BJacobs@blauberg.com

Ashley Rosa
Associate
973.379.6644 x 230
Arosa@blauberg.com

