



901 Mantua Pike

West Deptford, New Jersey 08096

Property Highlights

- Suites Ideal for Retail, Office and Medical Users
- Turn-Key Suites Range from 799 SF to 1,467 SF
- Ideally Situated at a Signalized Intersection
- Easy Access to Route 130 and 295
- Close Proximity to Penn Medicine, Inspira Health and Abundant Area Amenities
- Available Immediately
- Showings By Appointment Only

Offering Summary

Building Size:	13,656 SF
Available SF:	799 - 1,467 SF
Lot Size:	3.68 Acres

Demographics 1 Mile 3 Miles 5 Miles

Total Households	3,425	25,865	51,346
Total Population	9,019	64,829	129,984
Average HH Income	\$114,055	\$119,286	\$121,670

For More Information

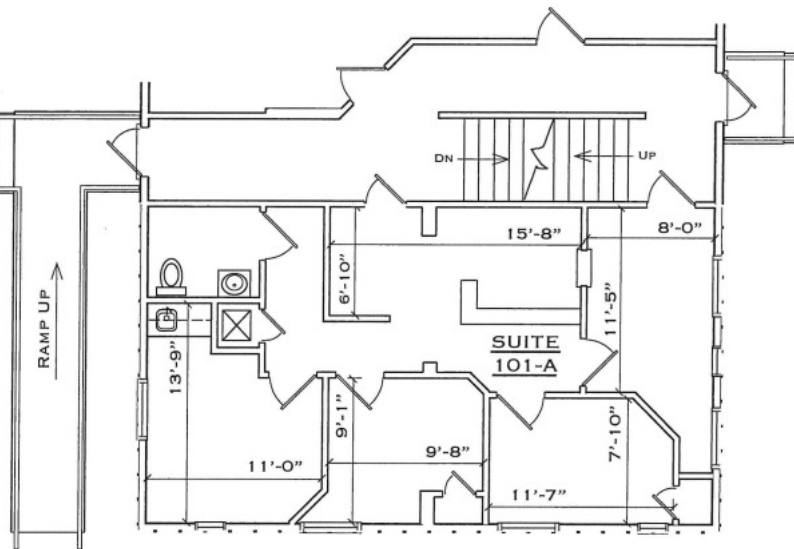
Will Frank

O: 856 724 4248
will.frank@naimertz.com

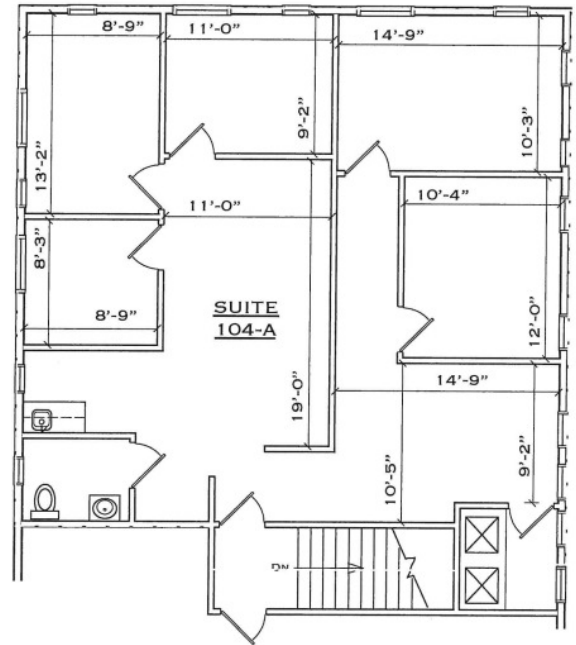
Joe Riggs

O: 609 352 1162
joe.riggs@naimertz.com





SUITE 101-A
799 RENTABLE SF



SUITE 104-A
1,398 RENTABLE SF

Lease Information

Lease Type:	MG	Lease Term:	Negotiable
Total Space:	799 - 1,467 SF	Lease Rate:	\$1,800.00 - \$2,200.00 per month

Available Spaces

Suite	Size (SF)	Lease Type	Lease Rate	Description
Suite 101A	799 SF	Modified Gross	\$1,800 per month	Reception and Waiting Area, 3 Private Offices
Suite 107B	1,467 SF	Modified Gross	\$2,200 per month	2 large rooms, 3 private offices, 2 restrooms
Suite 104A	1,398 SF	Modified Gross	\$2,150 per month	5 Private Offices, Bullpen Area, Kitchenette, Private Restroom

