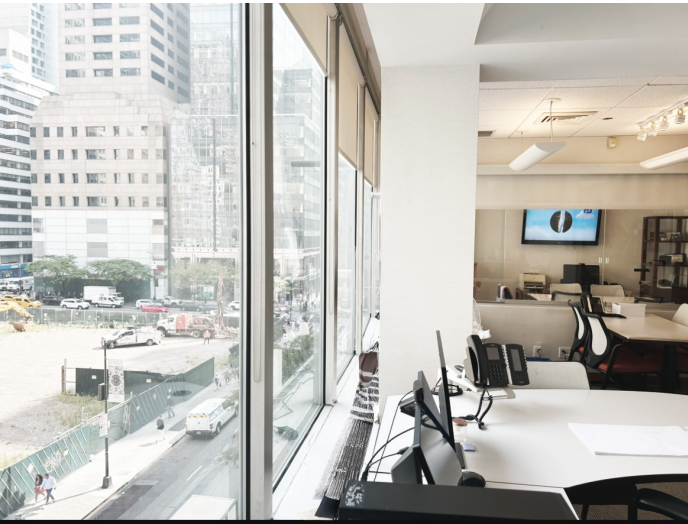


Jewelry Space FOR Sale

10W 46th 4th
STREET FLOOR



Bobrow
Bobrow
Bobrow
Bobrow



features

- * Mantrap
- * Floor to ceilings Northern facing windows
- * Two glass fronted offices
- * Wet pantry
- * Right off the elevator

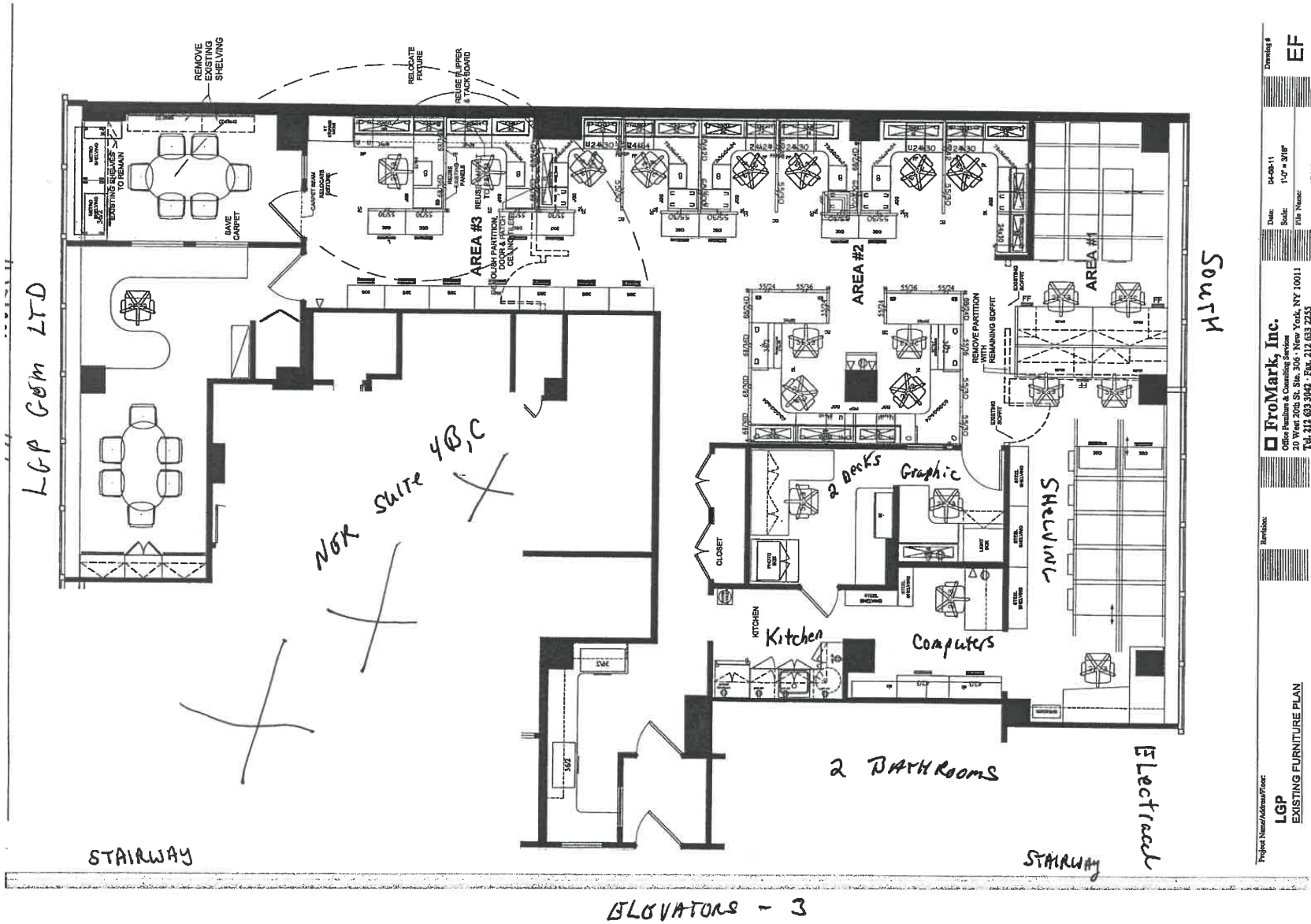
\$31,248
ANNUAL CONDO
MAINTENANCE
(\$8.68/PSF)

\$18,902.04/
ELECTRIC ANNUAL
(\$5.25/PSF)

ANNUAL RE TAXES
\$34,664
(\$9.63/PSF)

size

3,600
RENTABLE
SQUARE
FEET



Bobrow
Bobrow
Bobrow

Project Name/Address/Date: **LGP**
EXISTING FURNITURE PLAN

FromMark, Inc.
20 West 30th Street, New York, NY 10011
Tel: 212 633 3042 - Fax: 212 633 2255

Date: 04-08-11
Scale: 1/4" = 3'-0"

Drawing # **EF**



contact

JONATHAN KERSHNER

Director

jkershner@normanbobrow.com

212-682-9714 direct

201-546-4656 mobile

JACOB WOLKENFELD

Director

jacobw@normanbobrow.com

212-682-8848 direct

323-474-5552 mobile

Bobrow
Bobrow
Bobrow
Bobrow

Norman Bobrow & Co., Inc.