

For Lease



PORT ST. JOHN MEDICAL OFFICE BUILDING

7227 NORTH US 1
PORT ST. JOHN, FL 32927





Port St. John MOB in Brevard County is a three-story, 35,000 SF medical office building recently brought under new ownership. The property features a mix of primary care and multi-specialty practices, ample parking, and convenient access on US Highway 1 in Port St John, making it well-suited for healthcare providers looking to join an established clinical setting.

Building Highlights



Rental Rate: \$20/SF NNN



35,000 SF Medical Office Building with synergistic tenant mix

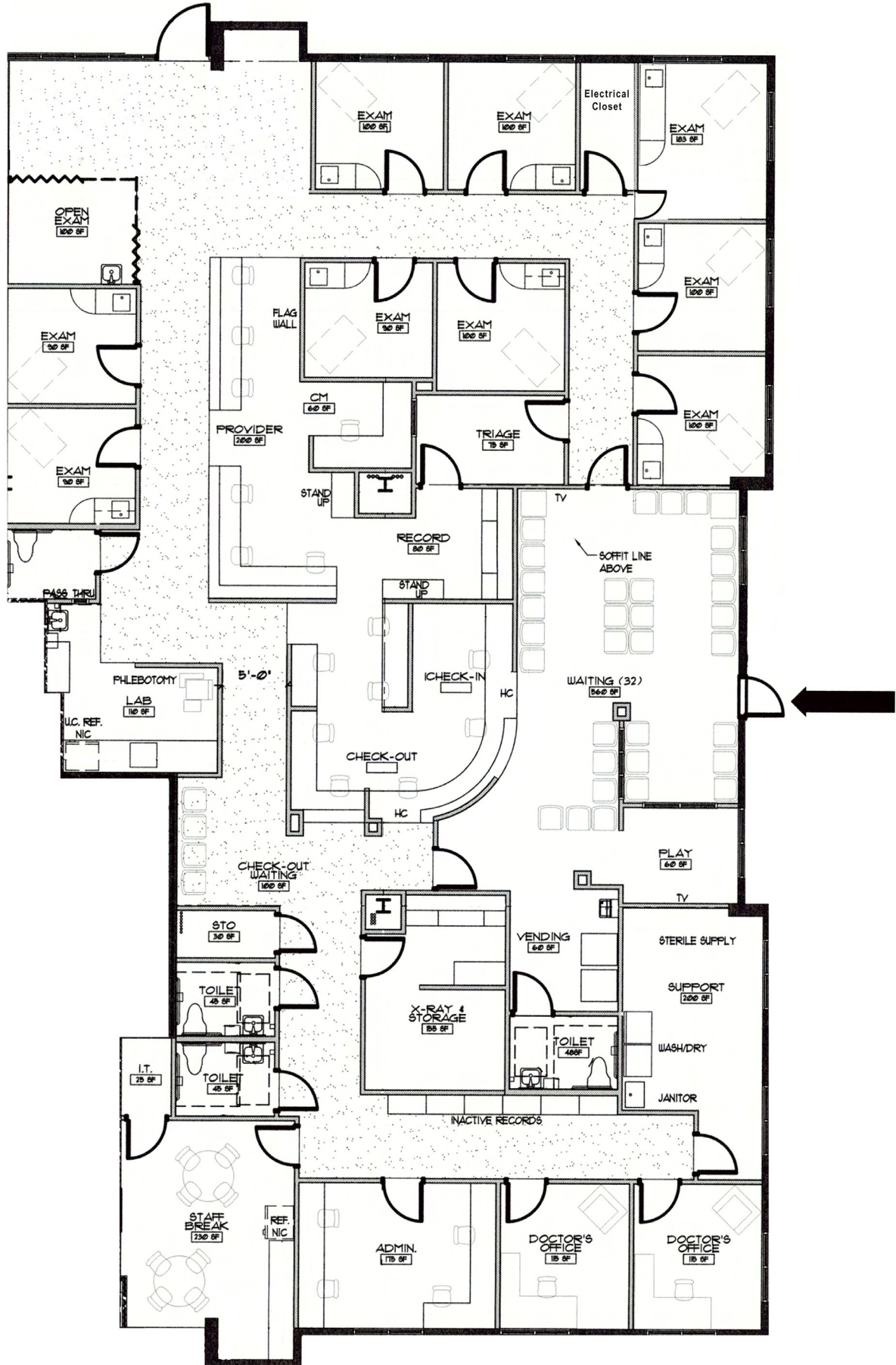


Abundant Surface Parking and Excellent Highway Visibility

Space Highlights

- Suite Available – 5,766 SF Medical Office Space
- Move-In Ready – Ideal for immediate occupancy
- Fully Built-Out Medical Suite – Numerous exam rooms with sinks
- Private Exterior Entrance – Direct access from parking lot for easy patient drop-off

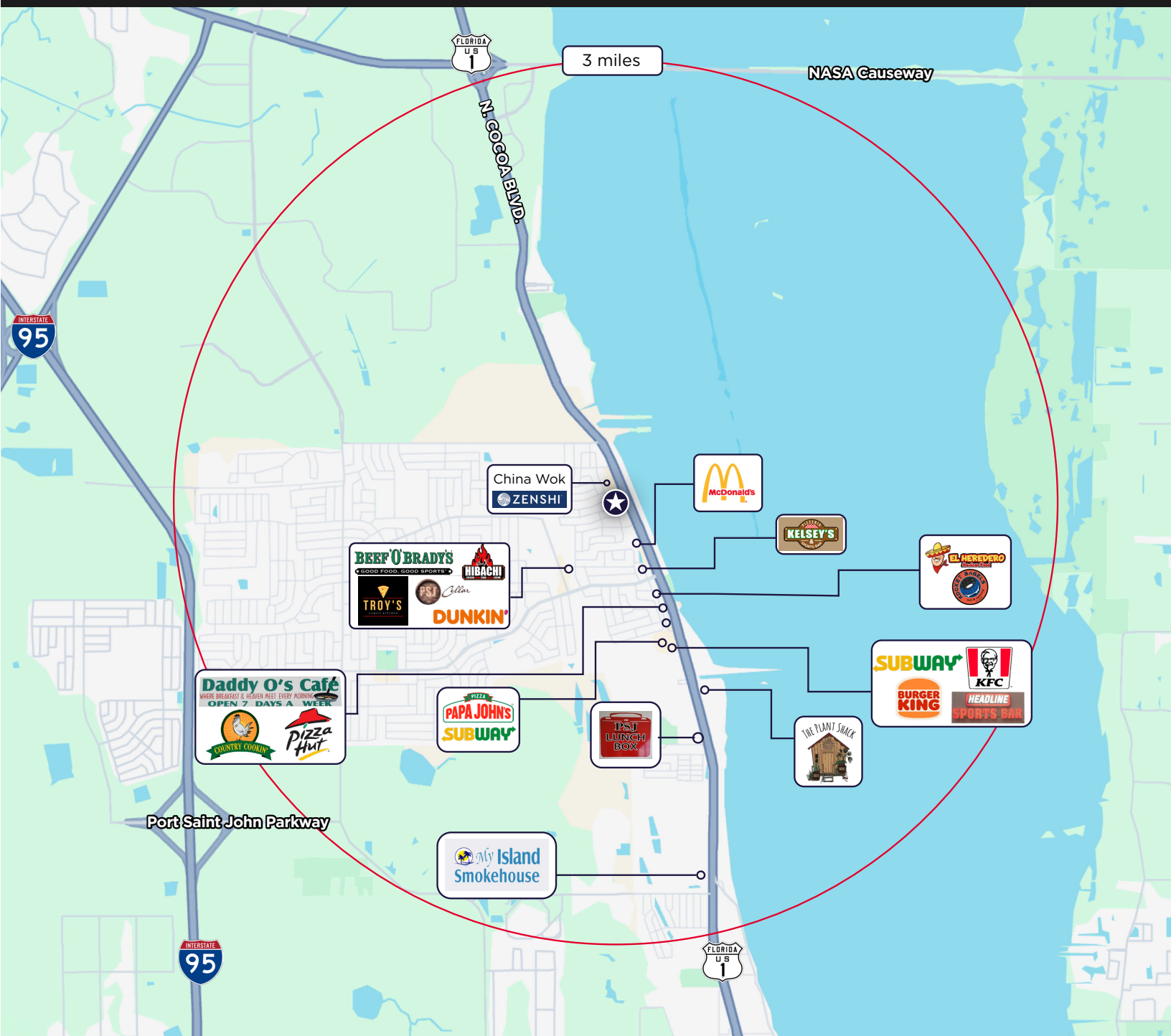
—SUITE 100 | 5,766 SF



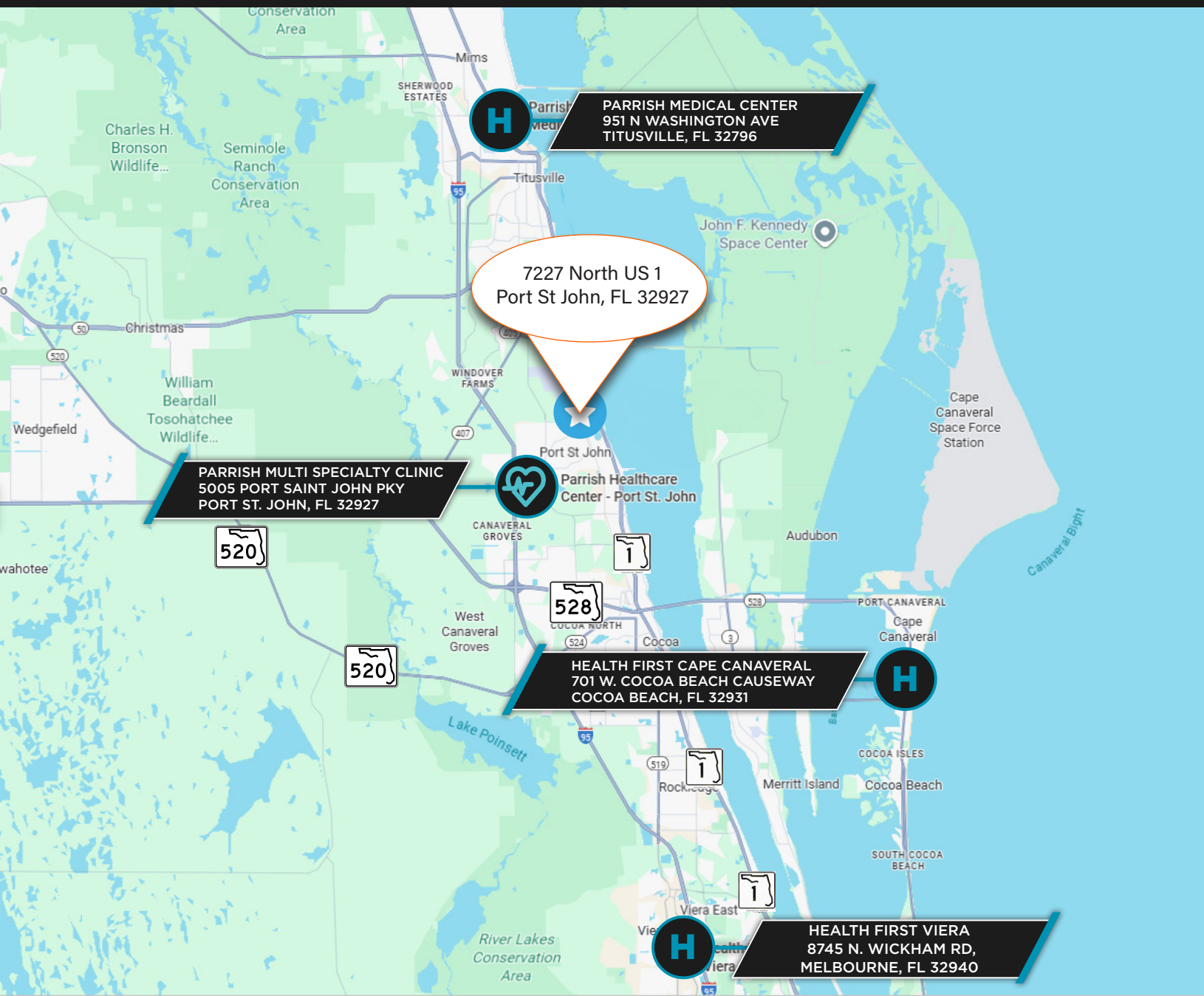
Front Entrance



AMENITIES MAP



PORT ST. JOHN MEDICAL OFFICE BUILDING



For more information, please contact:

Anne Spencer, MCR
Healthcare Advisory Practice
+1 407 541 4434
Anne.Spencer@cushwake.com



Cushman & Wakefield of Florida, LLC
20 N Orange Ave.
Suite 300
Orlando, FL 32801