



PROPERTY DESCRIPTION

Industrial property for sale located in the Newark Industrial Park. Great location immediately off Route 72 with easy access to I-95. The property consists of two connected buildings with the front building dimensions being 60'x80' with 16' ceilings and the back building dimensions being 23'x100' with 14' ceilings.

PROPERTY DETAILS

- **Building(s) Size:** 7,100 SF
- **Building 1:**
 - > Ceiling Height: 16'
 - > Year Built: 1979
- **Building 2:**
 - > Ceiling Height: 14'
 - > Year Built: 1987
- **Sale Price:** \$1,000,000
- **Lot Size:** 0.82 acres
- **Zoning:** I (Industrial)
- **Drive-In Doors:** 5
- **Electric:** 400 amp
- **Tax ID#:** 11-010.00-034



For More Information, Contact:

Dan Wham
dwham@dsmre.com
302.283.1800 Office
302.249.9744 Cell

Alec Georigi
ageorigi@dsmre.com
302.283.1800 Office
302.559.7191 Cell

DSM Commercial
Real Estate Services
3304 Old Capitol Trail
Wilmington, DE 19808
dsmre.com

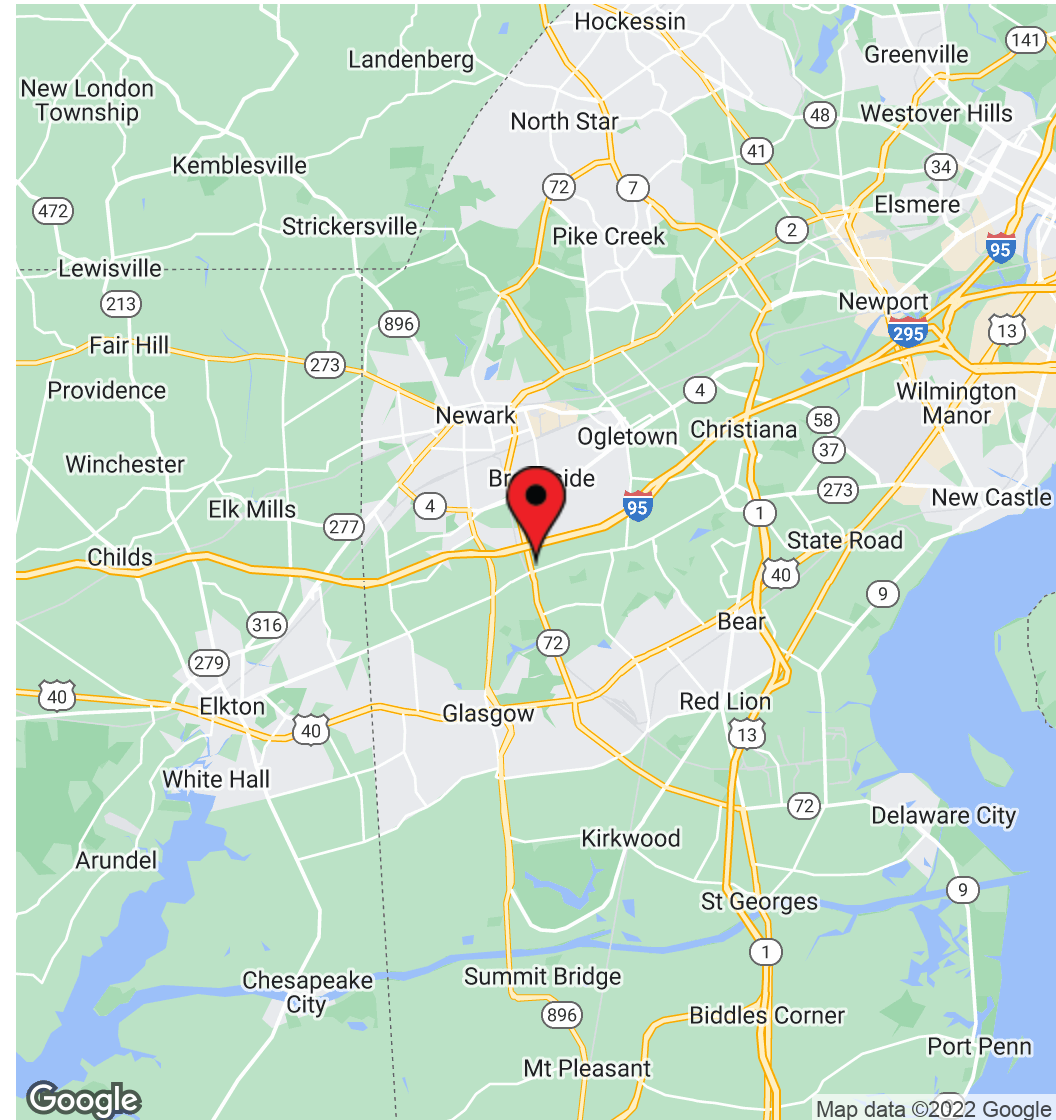
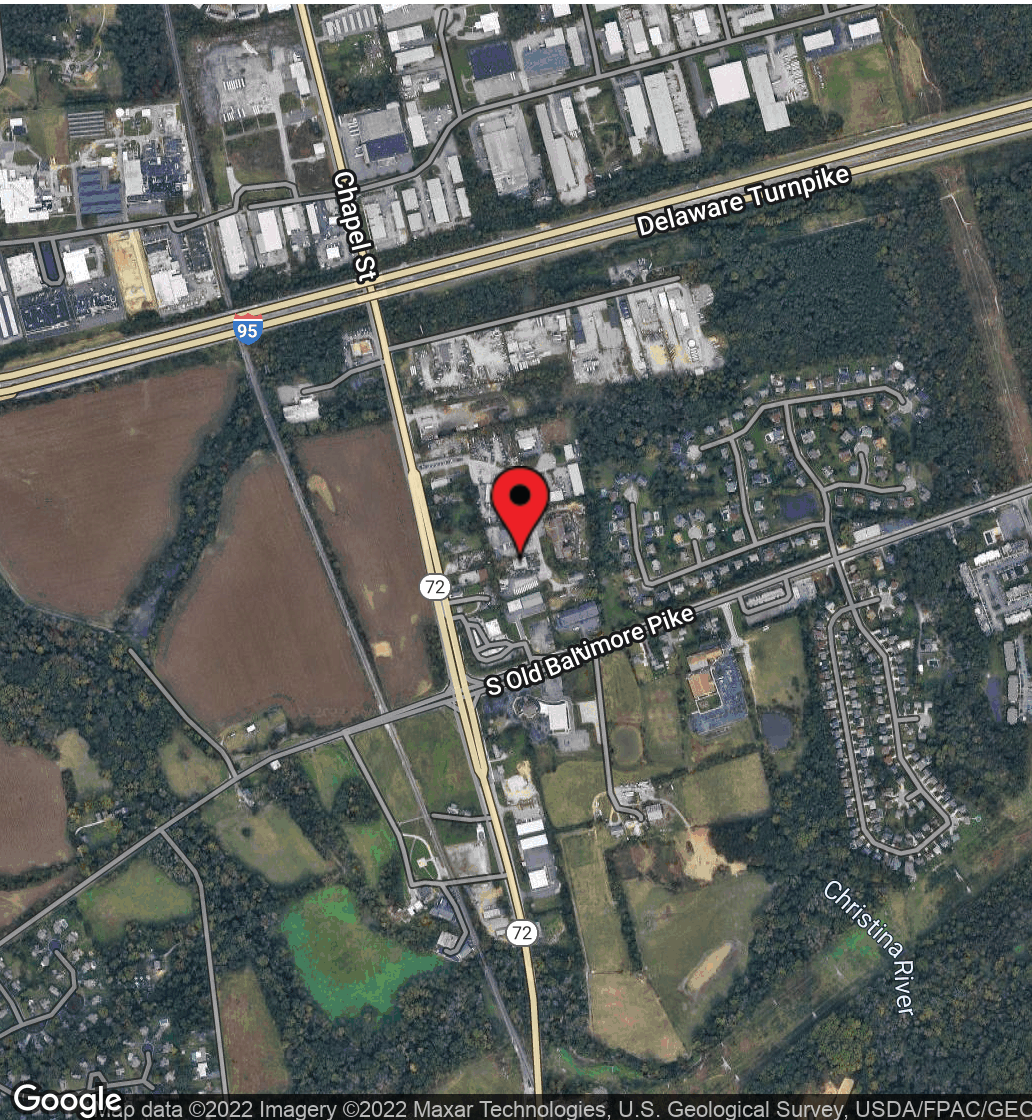


For More Information, Contact:

Dan Wham
dwham@dsmre.com
302.283.1800 Office
302.249.9744 Cell

Alec Georgi
ageorgi@dsmre.com
302.283.1800 Office
302.559.7191 Cell

DSM Commercial
Real Estate Services
3304 Old Capitol Trail
Wilmington, DE 19808
dsmre.com



For More Information, Contact:

Dan Wham
dwham@dsmre.com
302.283.1800 Office
302.249.9744 Cell

Alec Georgigi
ageorgigi@dsmre.com
302.283.1800 Office
302.559.7191 Cell

DSM Commercial
Real Estate Services
3304 Old Capitol Trail
Wilmington, DE 19808
dsmre.com