

CLASS  
**A+**  
SPACE



 Forsgate  
Cranbury  
CORPORATE  
HEADQUARTERS | 2CD

# 2 COMMERCCE DRIVE

WORK. CREATE. THRIVE.

CRANBURY, NEW JERSEY 08512



## FIRST FLOOR

+/- 10,000 - 37,000 SF

- 1x CONFERENCE ROOM
- 1x OUTDOOR GRILLING & PATIO
- 100x WORKSTATIONS
- 3x HUDDLE ROOMS
- 17x PRIVATE OFFICES
- 1x FULL-SERVICE GYM

### SPECIALIZED SPACES

#### IT ROOM/PRINT ROOM -

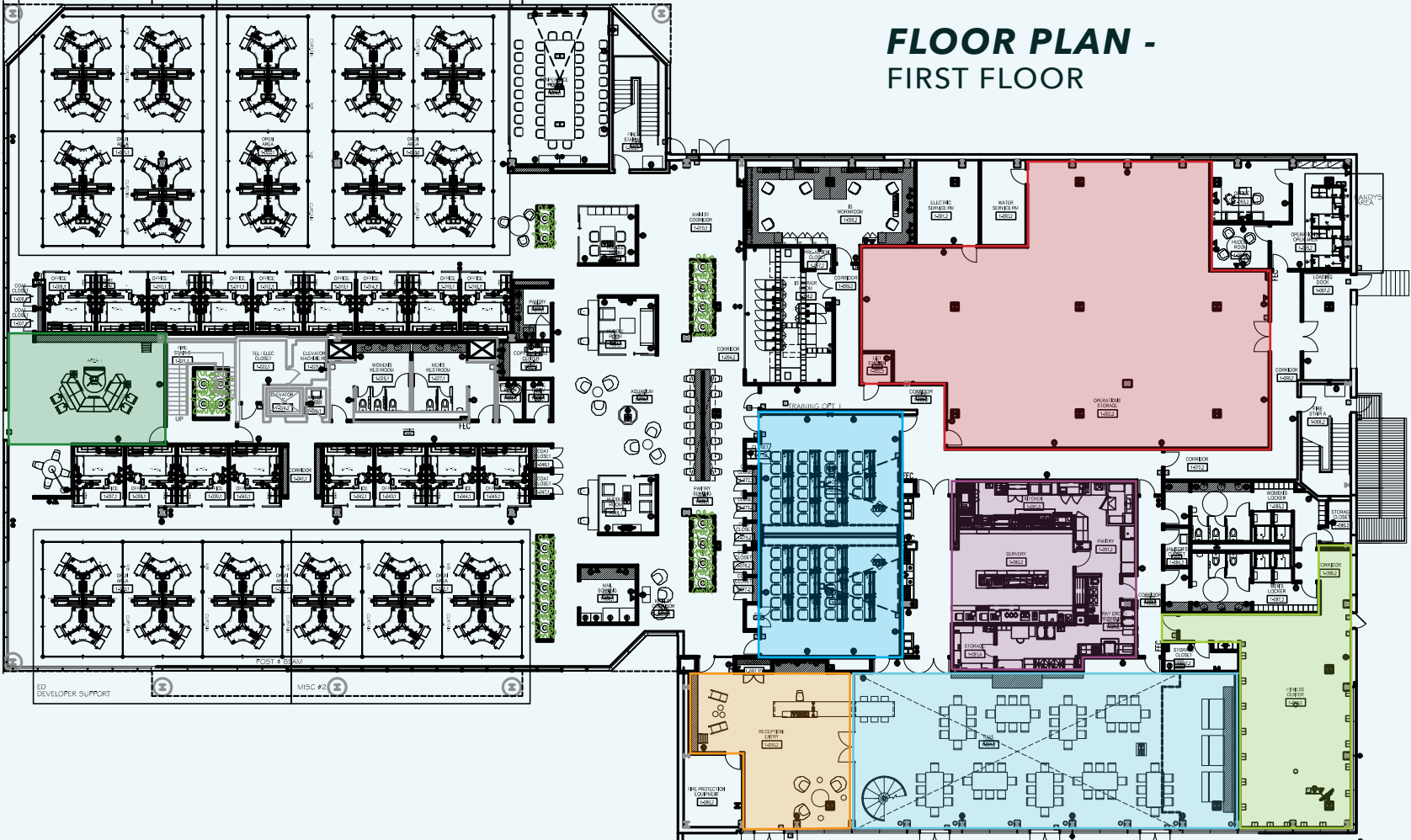
- 1 office
- 1 large room
- 6 workstations

#### OPERATIONS AREA -

- 1 office
- 1 conference room/office
- 2 workstations



# FLOOR PLAN - FIRST FLOOR



● SECONDARY RECEPTION

● WAREHOUSE

● CAFETERIA

● MAIN RECEPTION

● FITNESS CENTER

● TRAINING ROOM

● TOWN HALL



## PROPERTY OVERVIEW

- Environmentally friendly building, fully renovated 2010
- On-site facilities manager
- Fully furnished, collaborative office space
- Plenty of natural light
- +/- 4,600 SF warehouse/storage area with loading dock
- 272 total parking spaces, with 2 EV charging stations

## BUILDING AMENITIES

- Cafeteria (operable upon occupancy)
- Large eating/town hall area with fireplace
- BBQ terrace with fire pit
- Outdoor/amphitheater seating areas
- Fitness center with locker and shower rooms
- +/- 75 person training room
- Lounge area with pool table
- 2 breakfast bars



## SECOND FLOOR

+/- 10,000 - 37,000 SF

**228x**  
WORKSTATIONS

**28x**  
PRIVATE  
OFFICES

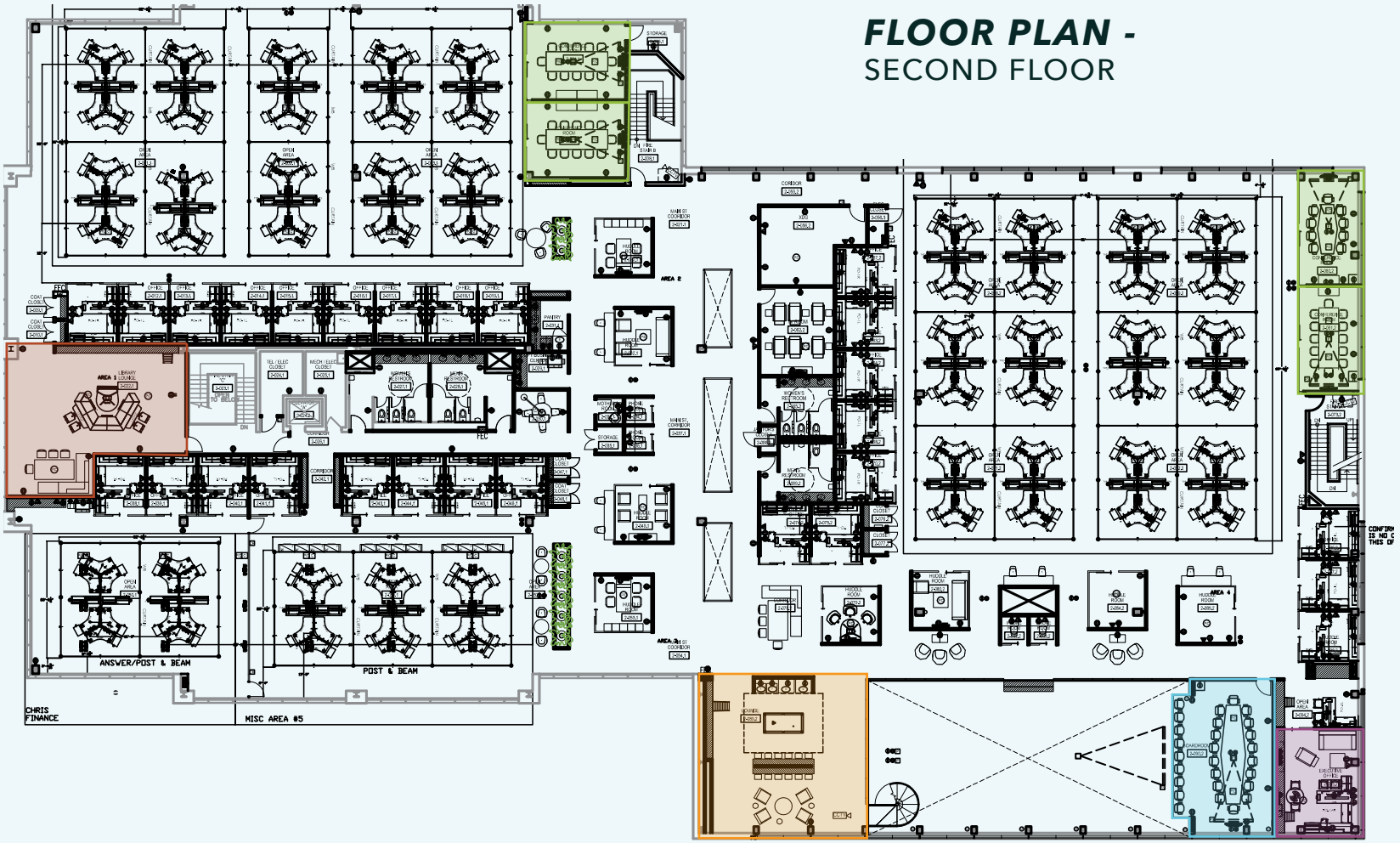
**5x**  
CONFERENCE  
ROOMS

**8x**  
HUDDLE  
ROOMS

**4x**  
PHONE/  
MOTHER'S  
ROOMS

**2x**  
PANTRIES

# FLOOR PLAN - SECOND FLOOR



- LIBRARY LOUNGE
- BOARD ROOM
- CONFERENCE ROOMS (4)
- LOUNGE WITH POOL TABLE
- EXECUTIVE OFFICE

# Fully Amenitized, Class A+, Corporate Headquarters at an Affordable Rent!

LOCATED BETWEEN  
CRANBURY SOUTH RIVER ROAD AND ROUTE 130

EASY ACCESS TO  
NJ TURNPIKE EXIT 8A, ROUTE 33, ROUTE 1,  
ROUTE 195 & ROUTE 295



## EXCLUSIVE BROKERS:

**MARK FOWLER, SIOR**  
Senior Managing Director  
(732) 996-2966  
mark.fowler@lee-associates.com

**A. PAUL MARCH**  
Senior Managing Director  
(908) 565-1998  
paul.march@lee-associates.com

PROPERTY WEBSITE  
[2commercedrive.com](https://2commercedrive.com)

TAKE THE VIRTUAL TOUR  
<https://app.cloudpano.com/tours/is5nGJ5UZ>

SCAN HERE  
for additional  
property photos:

