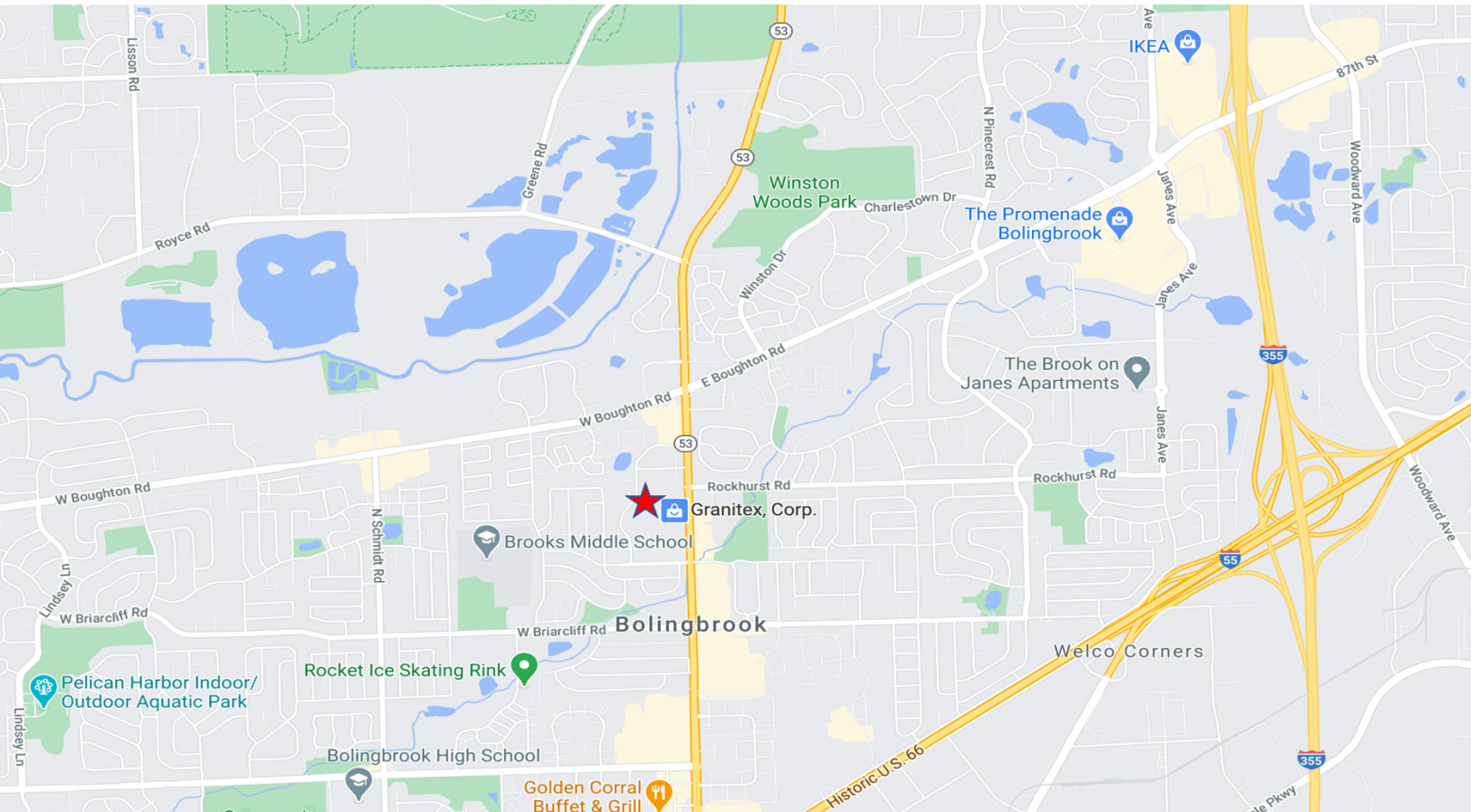


EMMA & AVA COURT

BOLINGBROOK, IL 60440.

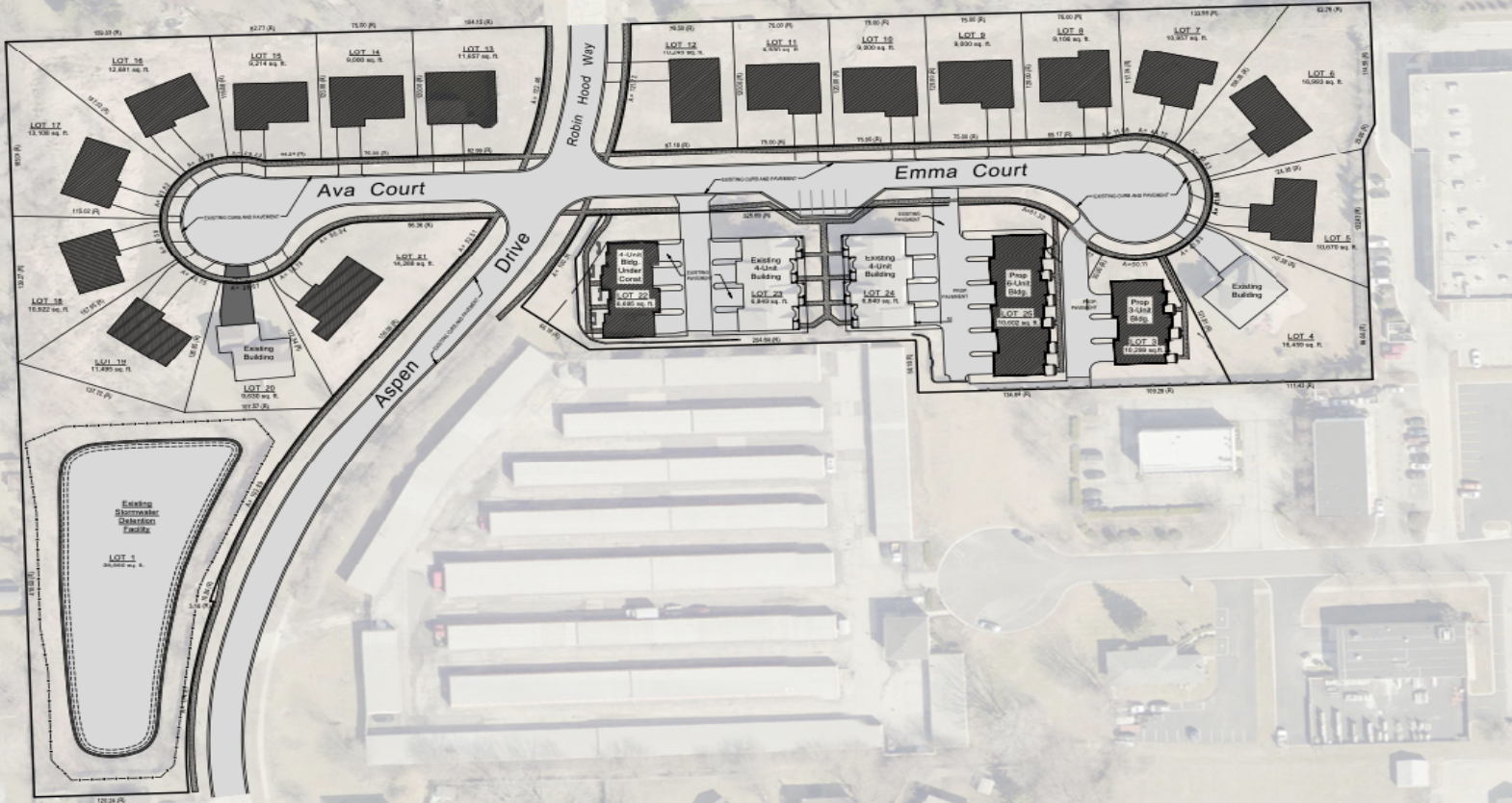
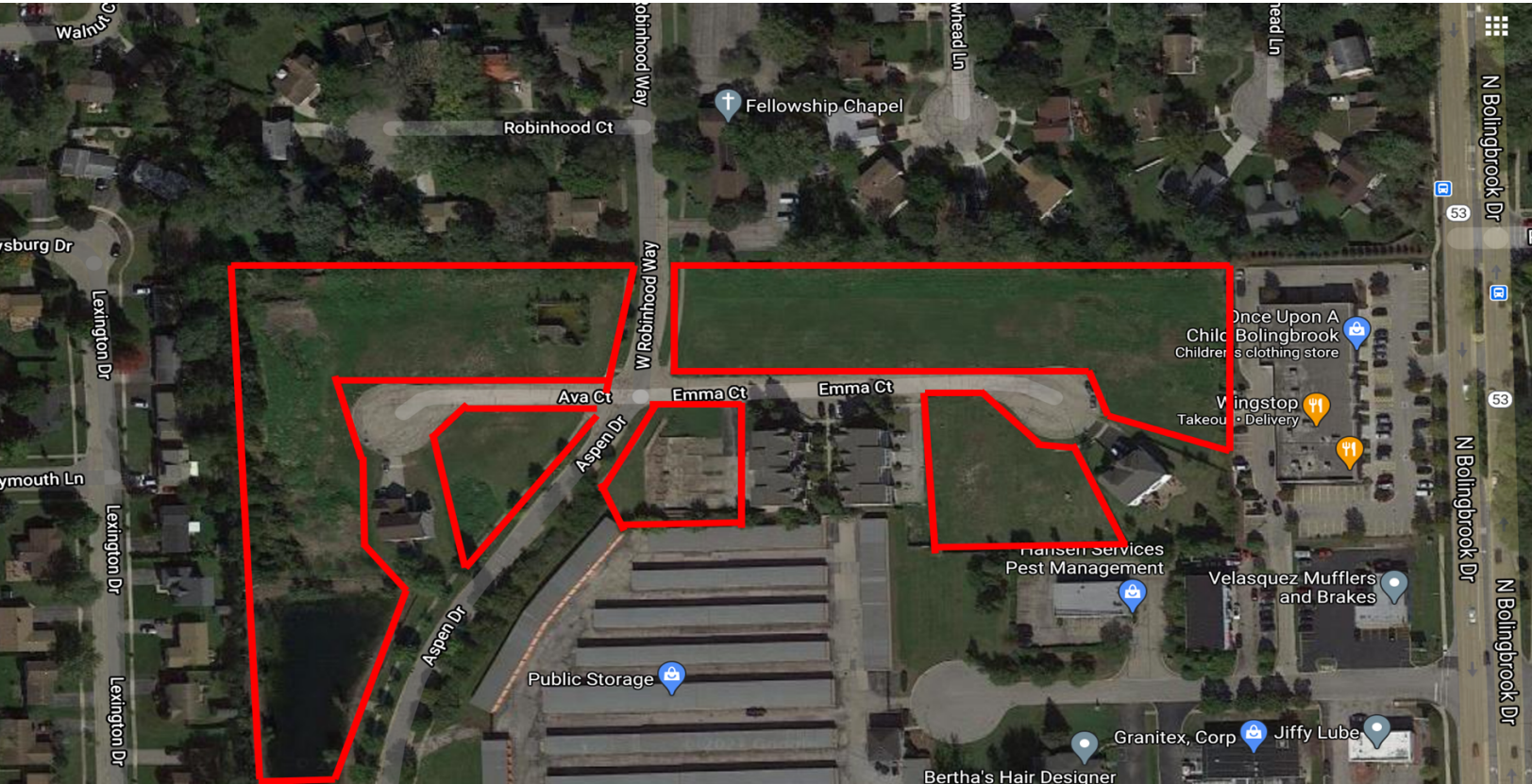
LAND FOR SALE



PROPERTY SPECIFICS

- 10+ acre fully developed subdivision in prime location.
- Located near Boughton Rd & Route - 53.
- Potential Use: Single-family/multi-family homes.
- Ready with Utilities and roads.
- No wetlands/floodplains.
- Close proximity to I-355 and I-55.
- Commuter Rail: Lisle Metra Station and Belmont Metra Station - 15 minutes.
- Minutes from The Promenade Bolingbrook, Macy's, Costco, IKEA, Meijer, Walmart and more.
- Close to Adventist Bolingbrook Hospital.

SITE MAP



Kris Prat
 Danville Homes LLC.
 Cellphone: (630) 788-7713.
 Email: Krisprat@yahoo.com