

±1,260 SF Warehouse/Flex | For Lease



1 Edwards Court, Suite 1442 Burlingame, California



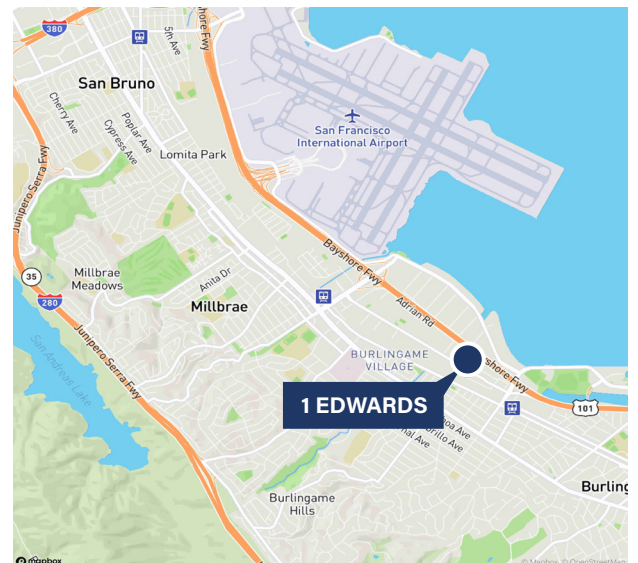
Property Highlights

- Excellent warehouse and flex space in shell condition
- ±1,260 SF Warehouse/Flex
- New metal grade level door
- 2 Private Offices
- Private Bathroom
- 10' x 10' Drive-in Door
- Clear Height: 14 Feet
- Excellent location off Rollins Rd and Broadway exit off Hwy 101
- Rental Rate: \$2.75 SF/Month/Industrial Gross

Contact Us

Marshall Hydorn
Executive Vice President
+1 650 577 2990
marshall.hydorn@cbre.com
Lic. 00960660

Matt Murray
Associate
+1 650 577 2934
matt.murray@cbre.com
Lic. 02083830

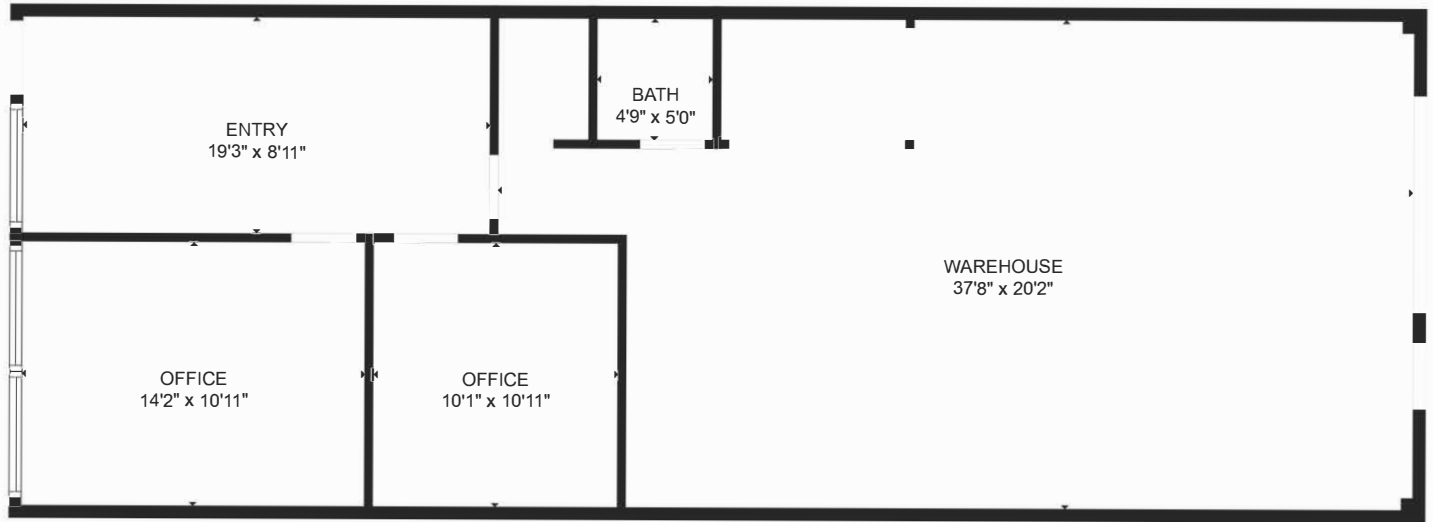


© 2025 CBRE, Inc. All rights reserved. This information has been obtained from sources believed reliable but has not been verified for accuracy or completeness. CBRE, Inc. makes no guarantee, representation or warranty and accepts no responsibility or liability as to the accuracy, completeness, or reliability of the information contained herein. You should conduct a careful, independent investigation of the property and verify all information. Any reliance on this information is solely at your own risk. CBRE and the CBRE logo are service marks of CBRE, Inc. All other marks displayed on this document are the property of their respective owners, and the use of such marks does not imply any affiliation with or endorsement of CBRE. Photos herein are the property of their respective owners. Use of these images without the express written consent of the owner is prohibited.

1 Edwards Court, Suite 1442
Burlingame, California

For Lease

Floor Plan (Not to Scale)



Contact Us

Marshall Hydorn
Executive Vice President
+1 650 577 2990
marshall.hydorn@cbre.com
Lic. 00960660

Matt Murray
Associate
+1 650 577 2934
matt.murray@cbre.com
Lic. 02083830

1 Edwards Court, Suite 1442
Burlingame, California

For Lease

Interior



Contact Us

Marshall Hydorn
Executive Vice President
+1 650 577 2990
marshall.hydorn@cbre.com
Lic. 00960660

Matt Murray
Associate
+1 650 577 2934
matt.murray@cbre.com
Lic. 02083830

www.cbre.com/sanfranciscopeninsula

