



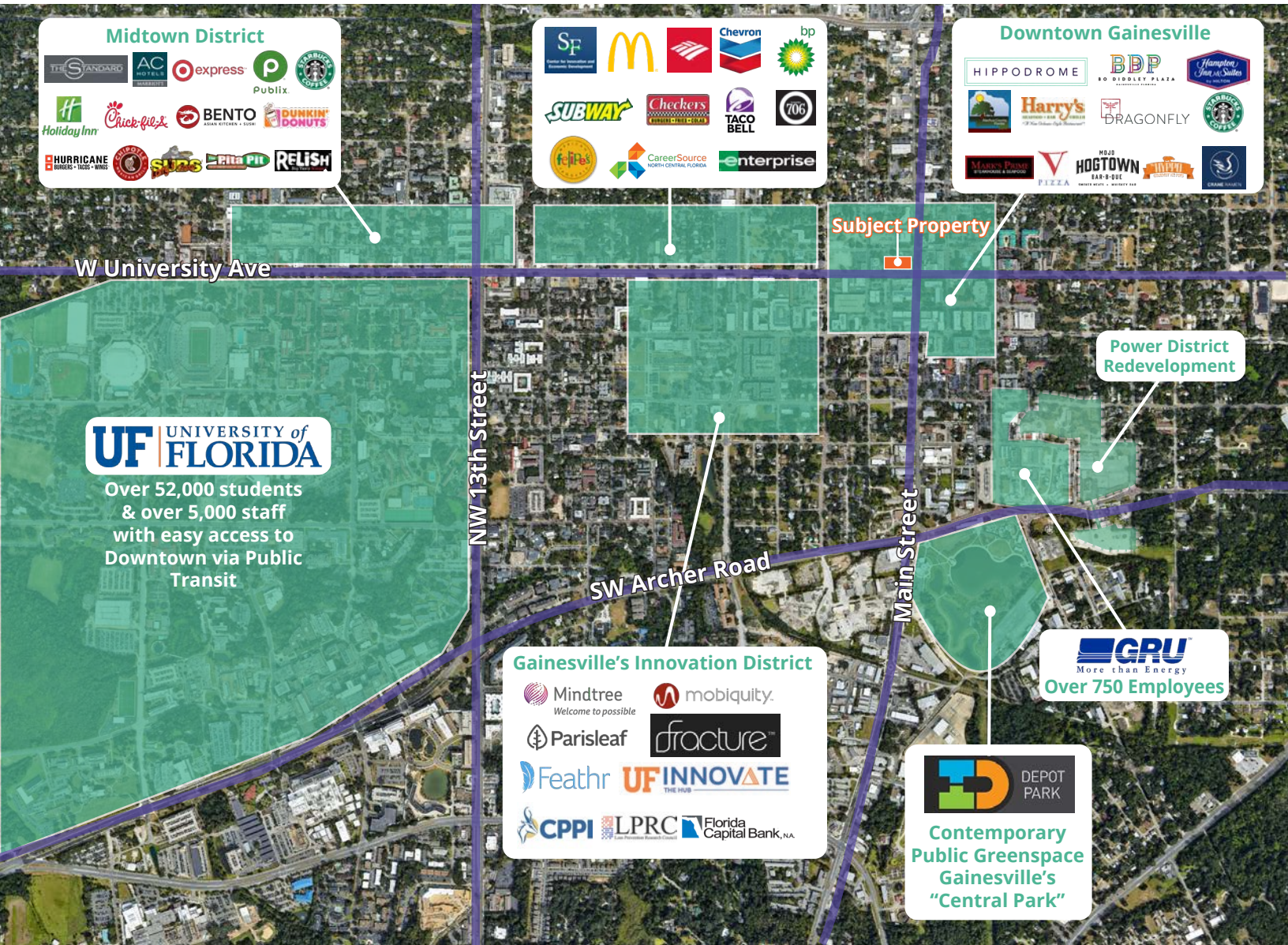
Office Spaces Available For Lease

- 5,235 sf office space on the full second floor offering panoramic views of downtown Gainesville. This space features nine private offices, a large conference room, open work space, full kitchen and storage.
- The building also has up to 3,000 sf of basement space available for storage.
- Ample parking available in a dedicated parking deck with 140 spaces.
- Located in downtown Gainesville, the Wells Fargo Building is centrally located around some of the city's most popular restaurants, attractions and nightlife destinations.

For further information

Rick Cain, CCIM, SIOR, Principal
352 505 7588
rick.cain@avisonyoung.com

Aerial map



Location

In the heart of Downtown Gainesville



Availability

5,235 sf office spaces



Proximity

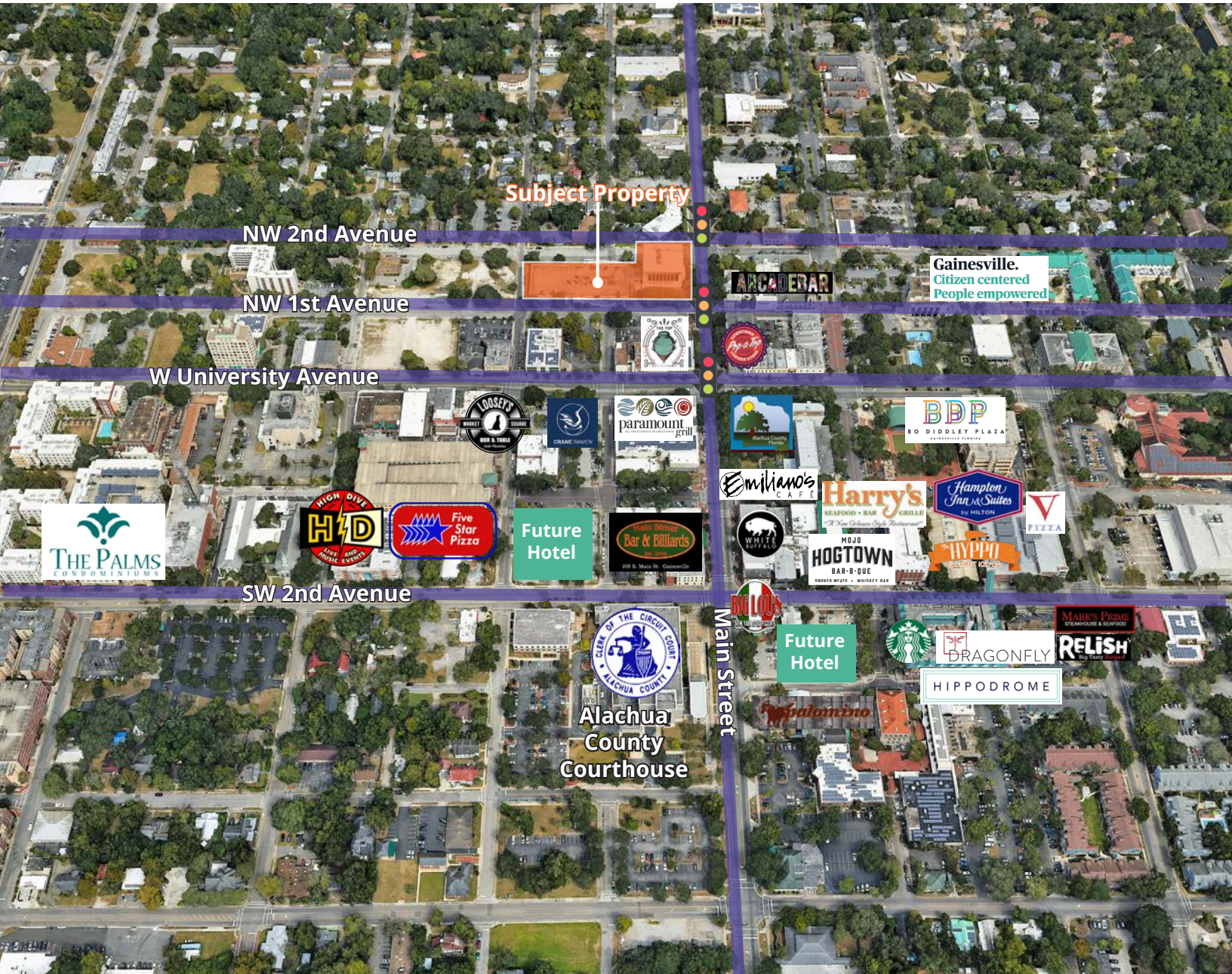
Within walking distance to restaurants and nightlife



Parking

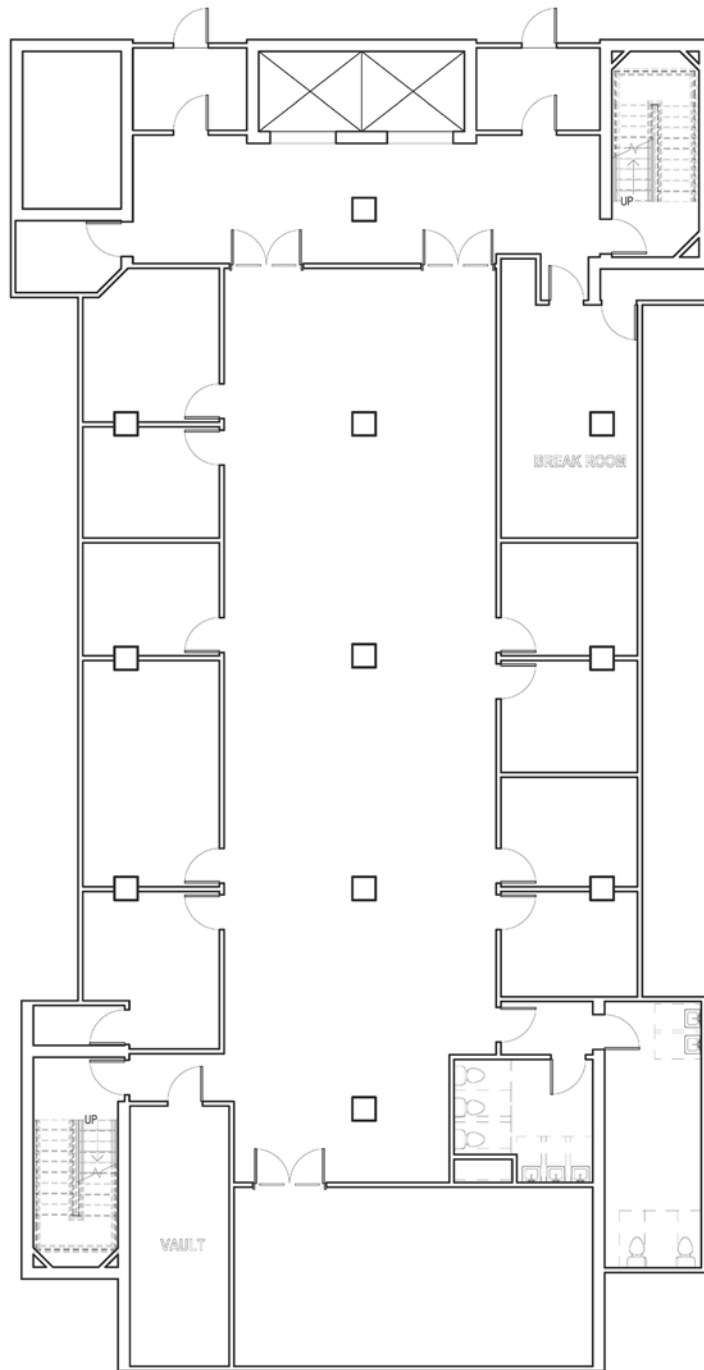
Dedicated parking inside and adjacent parking garage

Aerial map



Floor plan - 2nd floor

5,235 sf



**If you would like to discuss this further,
please get in touch.**

Rick Cain, CCIM, SIOR, Principal
352 505 7588
rick.cain@avisonyoung.com

Visit us online

[avisonyoung.com](https://www.avisonyoung.com)

© 2023 Avison Young – Florida, LLC. All rights reserved.
E. & O.E.: The information contained herein was obtained from sources which we
deem reliable and, while thought to be correct, is not guaranteed by Avison Young.
| 132 NW 76th Drive | Gainesville, FL 32607

**AVISON
YOUNG**