



OFFICE FOR LEASE

This standout office property has the potential to be the perfect headquarters location for a new or established business. It is perfectly situated at the intersection of I-495 and Maryland Route 50 and also great for commuters as it is walkable to the New Carrollton Metro, Marc and Amtrak Station. Building signage is available at the highly visible location.

PROPERTY OVERVIEW

- Type: Class B 3 Star Office
- RBA: 137,900 SF
- Stories: 2
- Typical Floor: 63,914 SF
- Year Built/Renov: 1979/2004
- Parking: 600-Surface
4.00/1,000 SF

KENNETH FELLOWS

kfellows@klnb.com | 301-222-0210

ROBERT PUGH

rpugh@klnb.com | 301-222-0211

KEIRY MARTINEZ

kmartinez@klnb.com | 703-334-5629

MARKET

8301 PROFESSIONAL PL

LANDOVER, MD 20785, PRINCE GEORGE'S COUNTY

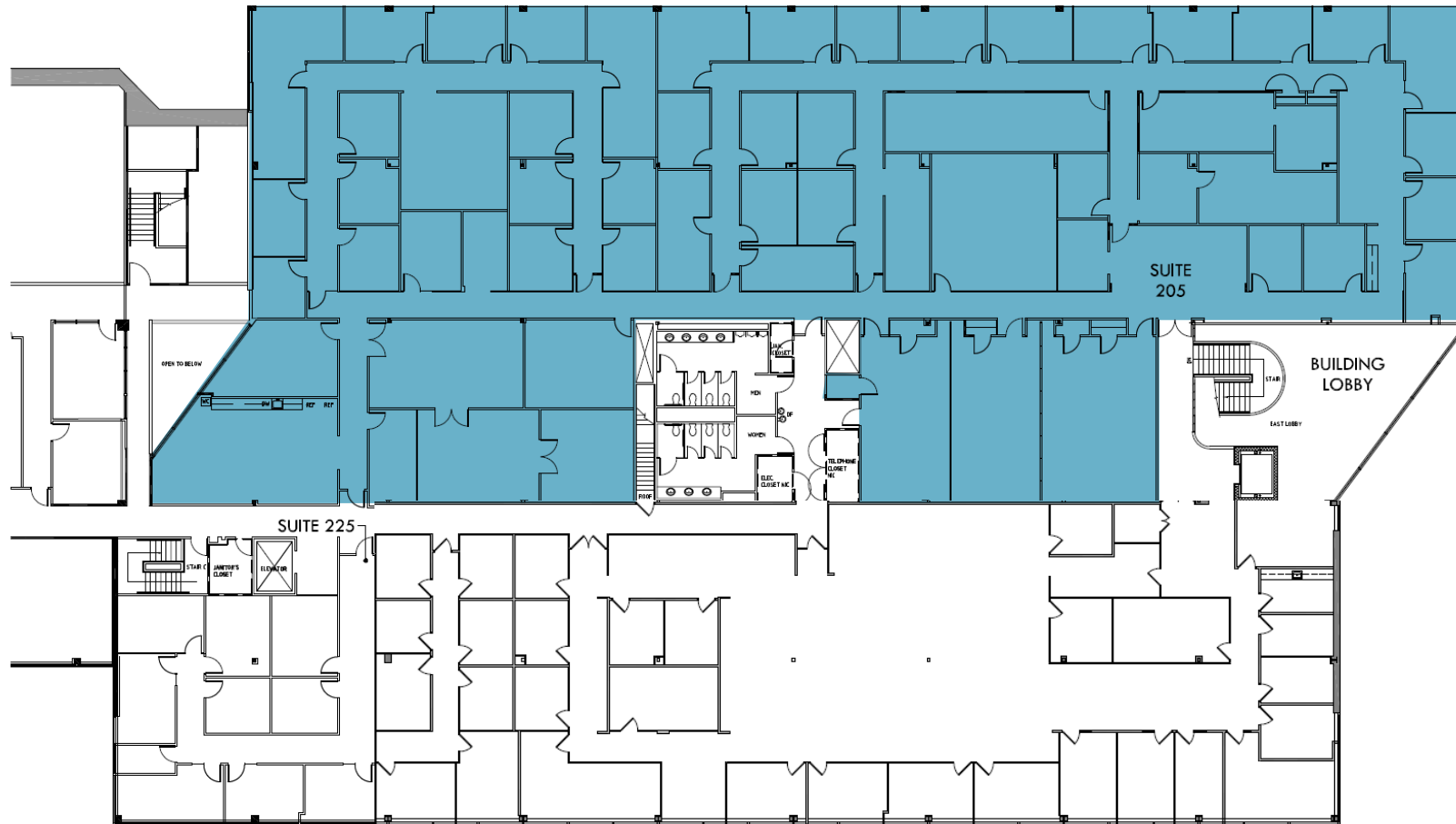


KENNETH FELLOWS
kfellows@klnb.com | 301-222-0210

ROBERT PUGH
rpugh@klnb.com | 301-222-0211

KEIRY MARTINEZ
kmartinez@klnb.com | 703-334-5629





SUITE 205
21,696 SF



8301 PROFESSIONAL PL

LANDOVER, MD 20785, PRINCE GEORGE'S COUNTY

FOR MORE INFORMATION, PLEASE CONTACT:

KENNETH FELLOWS

kfellows@klnb.com
301-222-0210

ROBERT PUGH

rpugh@klnb.com
301-222-0211

KEIRY MARTINEZ

kmartinez@klnb.com
703-334-5629

12435 Park Potomac Ave, Suite 250, Rockville, MD, 20854

.....
klnb.com

 facebook.com/KLNBCRE

 [@KLNBCRE](https://twitter.com/KLNBCRE)

 linkedin.com/company/klnb

 instagram.com/klnbcre

CLICK TO VIEW PROPERTY WEBSITE

While we have no reason to doubt the accuracy of any of the information supplied, we cannot, and do not, guarantee its accuracy. All information should be independently verified prior to a purchase or lease of the property. We are not responsible for errors, omissions, misuse, or misinterpretation of information contained herein and make no warranty of any kind, express or implied, with respect to the property or any other matters.