



NEIGHBORHOOD

**WEST VILLAGE**

LOCATION

**ON KERCHEVAL BETWEEN PARKER  
AND SEMINOLE**

SPACE TYPE

**MIXED-USE**

Located on Kercheval Avenue between Parker and Seminole Streets in Detroit’s charming West Village, 8116 Kercheval consists of three historic mixed-use buildings. The buildings were fully renovated in 2016 and include both retail and residential units. The ground floor is fully leased to Two Birds, a bar and ice cream shop, currently expanding into an adjacent retail space, and Velvet Tower, a vintage clothing store. The second floor includes three residential units (ranging from 720 to 1,106 square feet), which are currently operated as short-term rentals generating income above standard residential leases. The property features a wrap-around terrace/community space that connects the buildings and provides additional usable outdoor area. Positioned a block from neighborhood landmarks Sister Pie and Marrow, this offering presents a unique opportunity in one of the most vibrant, commercially established sections of desirable West Village.

ASKING PRICE	CAP RATE	TOTAL UNITS	UNIT MIX	ZONING
<b>\$1,299,000</b>	<b>8.3%</b>	<b>6</b>	<b>(3) Retail / (3) Apartments</b>	<b>B4</b>
ADDRESS	YEAR BUILT	YEAR RENOVATED	ZONING DESCRIPTION	
<b>8116 Kercheval, Detroit, MI 48214</b>	<b>1916</b>	<b>2016</b>	The B4 General Business District provides for business and commercial uses of a thoroughfare-oriented nature. In addition to these uses, other businesses, which may benefit by drawing part of their clientele from passing traffic are permitted. Additional uses, which may be successfully blended with permitted by-right uses, are conditional.	
NEIGHBORS	Sister Pie, Marrow, Eugenie, Red Hook, the Shepherd, The Empowerment Plan, Collect Beer Bar, Belle Isle, Butzel Family Recreation Center, Saint Charles, Faircloth, Metropolitan Bar + Kitchen			

# 8116 KERCHEVAL

## Property Details

### GROSS BUILDING AREA

5,215 SF

### ACRES

0.211

### # OF BUILDINGS

3

### TOTAL NUMBER OF UNITS

6

### RETAIL UNITS

3

### APARTMENT UNITS

3

### HEATING & COOLING

Forced air

### ELECTRIC

Separately Metered

### PARKING SPACES

7

O'Connor Real Estate



# 8116

## KERCHEVAL

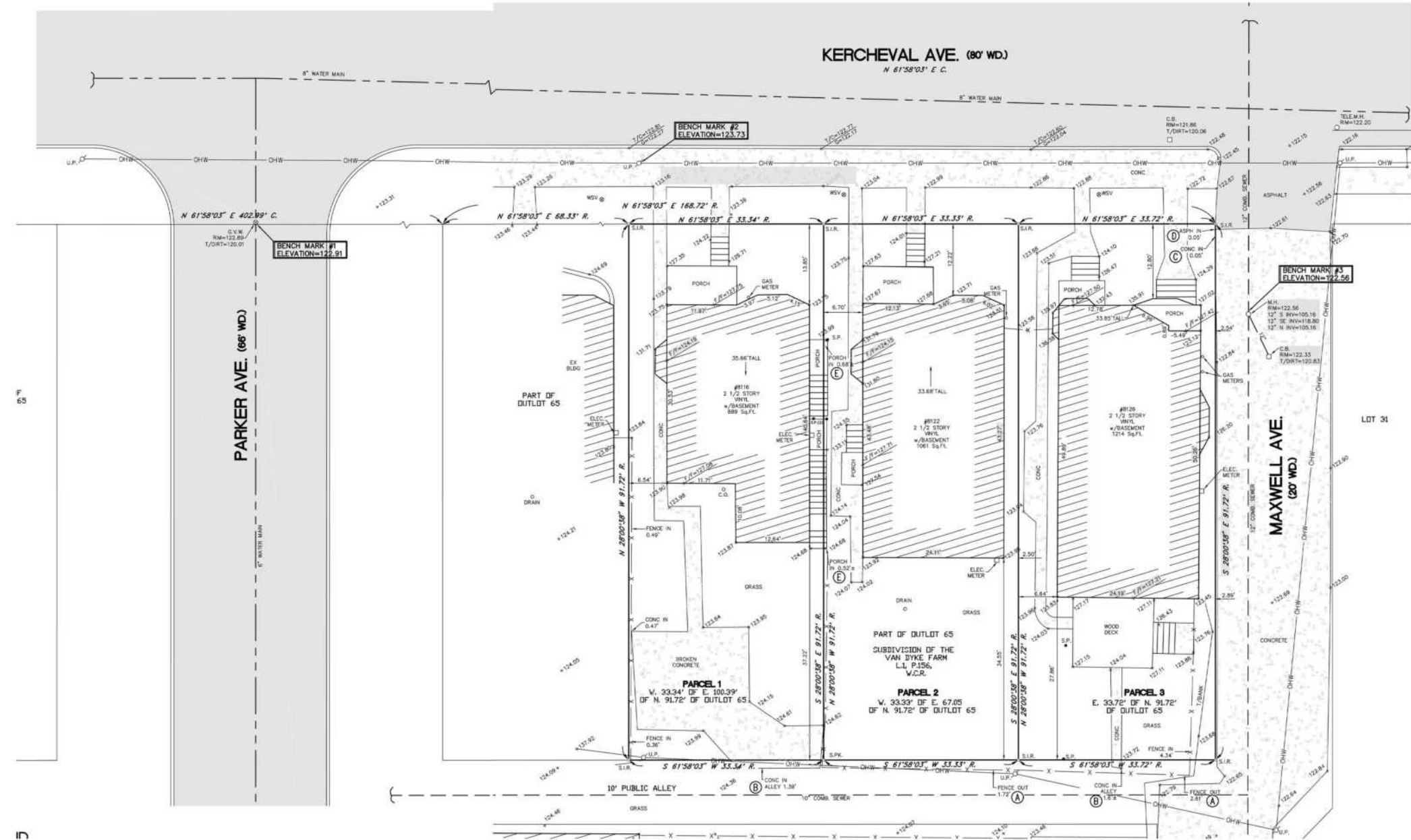
### Site Survey

#### RETAIL FEATURES

2,523 Square feet of ground retail space

100% Occupied

Retail spaces benefit from continuous open air communal deck and full basements





Cocktails, Beer, Wine + Custard! Two Birds is a neighborhood bar with a seasonal ice cream window.



# 8116

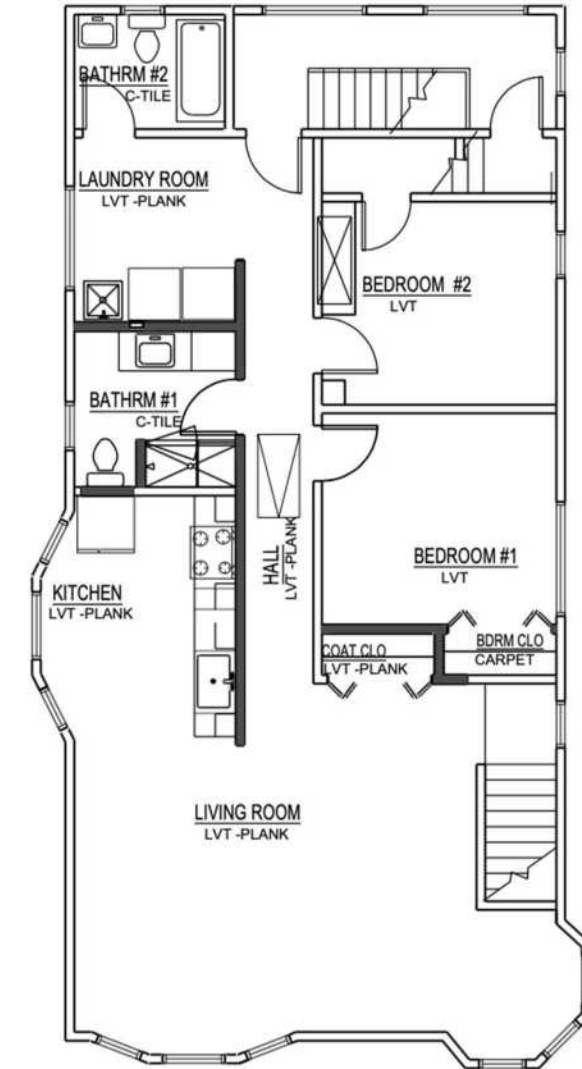
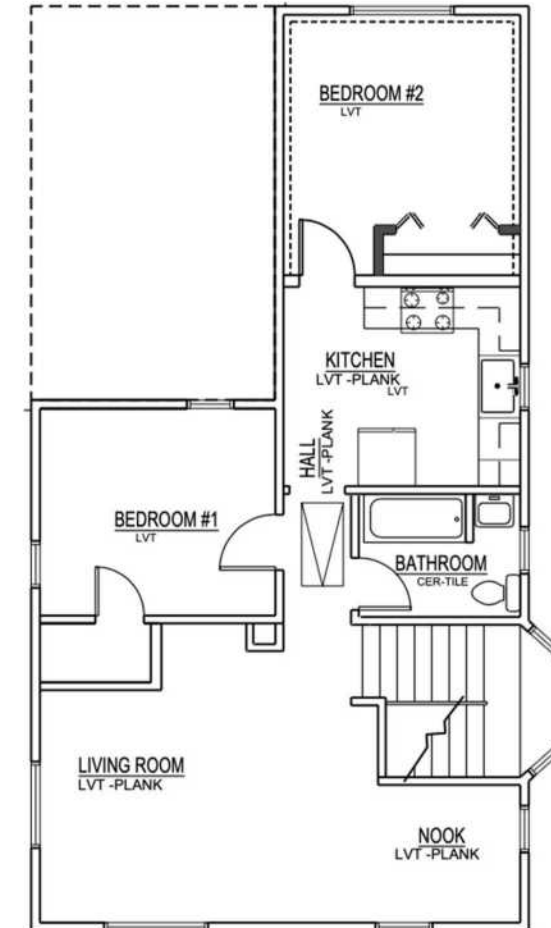
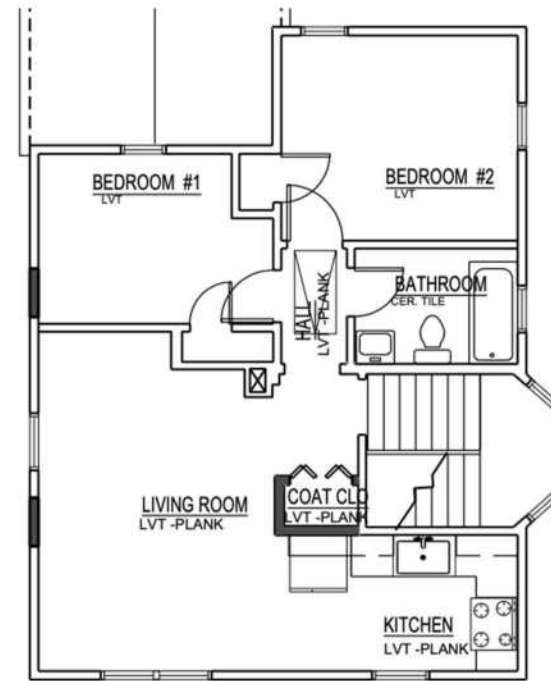
## KERCHEVAL

Apartment Floor Plans

### FEATURES

Fully renovated short term rental units featuring hardwood floors and modern kitchens and bathrooms

Three unit types ranging from 720 to 1,106 square feet





Units are sold fully furnished allowing for a seamless translation to continue with short term rentals



# WEST VILLAGE

West Village is a vibrant, historic neighborhood on Detroit's east side, renowned for its early 20th-century architecture and strong sense of community. The area blends a charming, walkable environment with a growing mix of local businesses, restaurants, and retail, making it one of Detroit's most desirable neighborhoods for commercial investment. West Village features a combination of renovated and repurposed properties alongside historic homes, attracting both residents and entrepreneurs who appreciate its unique character and accessibility. With its proximity to Belle Isle Park, Downtown Detroit, and major transportation routes, West Village offers a prime location for businesses seeking to thrive in a revitalizing, community-oriented area.

O'Connor Real Estate





# DEVELOPMENTS IN THE VILLAGES



## the Shepherd

The campus grounds, designed by the Office of Strategy + Design (OSD), include a boutique bed and breakfast (ALEO), McArthur Binion's Modern Ancient Brown Foundation, a public skatepark designed by Tony Hawk, and a sculpture park honoring the late Detroit artist Charles McGee. The Shepherd is part of Library Street Collective's ongoing commitment to Detroit's Little Village neighborhood.



## Lantern

A new mixed-use arts hub is being realized in East Village through the redevelopment of a 100-year-old vacant industrial complex that will house two local arts non-profits and include approximately 5,300 square feet of affordable artist studios, an art gallery, and 4,000 square feet of creative retail – all connected by a 2,000-square-foot courtyard.



## Saint Charles Residences

The century-old St. Charles Borromeo School on Townsend Street in Islandview has been converted into 25 upscale condominiums while a phase two development, the Saint Charles Terraces, will provide 10 newly constructed apartments. Additional development is planned.

# DETROIT DEVELOPMENTS



## Residences at Water Square

The residential skyscraper under construction at the former site of the Joe Louis Arena will be the biggest apartment tower to open on the Detroit riverfront in decades. The all-glass high-rise boasting 496 upscale units will open in 2024 with an all-seasons swimming pool, rooftop terrace, and fitness center.



## University of Michigan Center for Innovation

The \$250 million, 200,000-square-foot building is being built by the University of Michigan to provide graduate education, talent-based community development, and community engagement. It's part of the larger \$1.5 billion District Detroit development that includes new construction of 6 buildings and reuse of 4 historic properties.



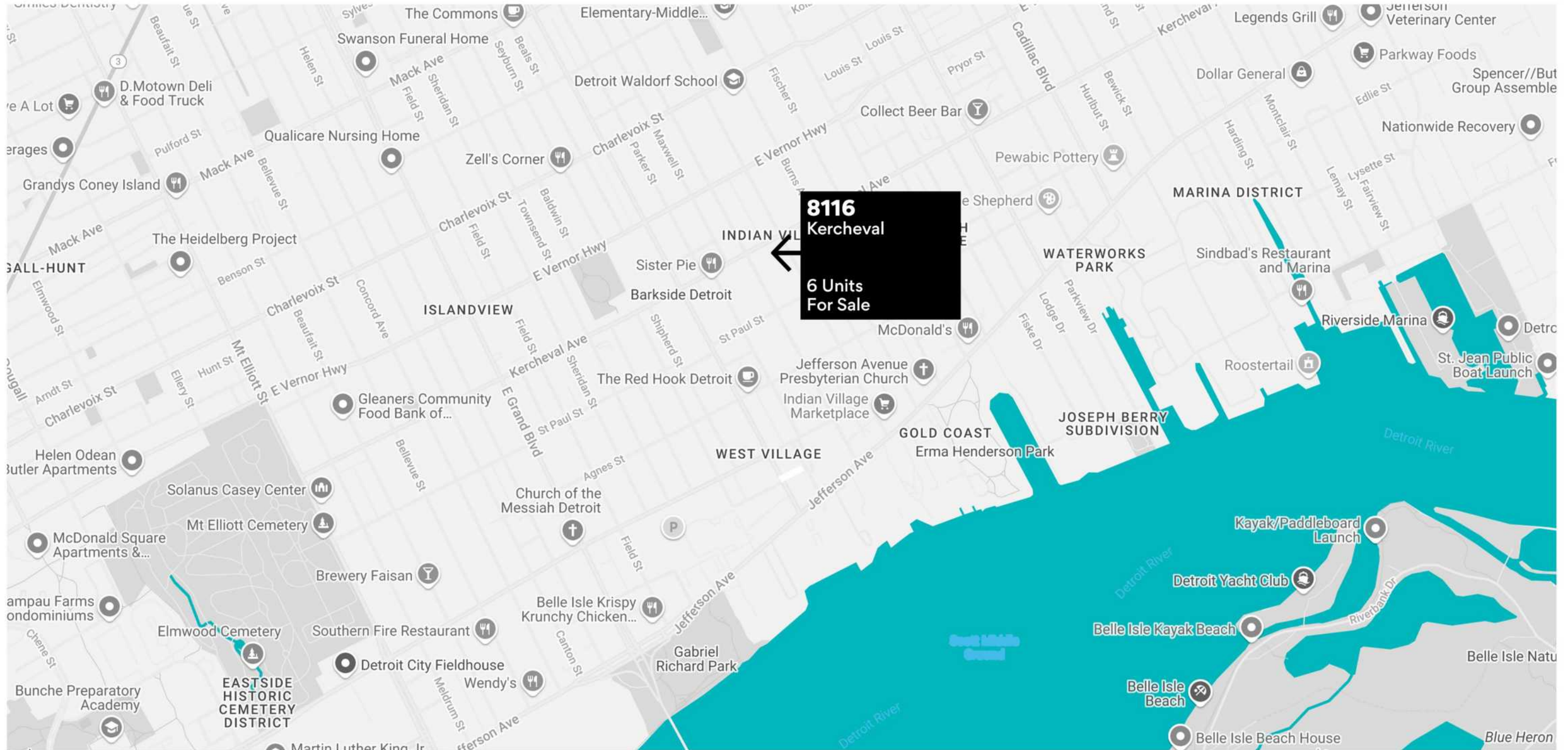
## Gordie Howe International Bridge

The new Detroit-Windsor bridge will facilitate trade and travel across the busiest international crossing in North America providing uninterrupted freeway traffic flow between the two countries. When complete in 2025, the 1.5-mile crossing will feature 6 lanes of travel, a dedicated pedestrian/cycling path, and new ports of entry.



**8116**  
Kercheval

6 Units  
For Sale



# 8116 KERCHEVAL

## RENT ROLL & FINANCIALS

### RETAIL TENANTS

Unit	Tenant	SF	Rental Rate	Annual Increases
8116-1	Velvet Tower	665 SF	\$31.57 /SF Modified Gross	3%
8122-1	Two Birds	850 SF	\$25.54 /SF NNN	3%
8130	Two Birds	1,088 SF	\$27.50 /SF NNN	3%

Yearly gross income \$67,328.52

### APARTMENT UNITS (Managed Short Term Rental)

Unit	SF	Beds	Baths
8116-2	720 SF	2	1
8122-2	866 SF	2	1
8126	1,106 SF	2	2

Yearly gross income \$104,526.61

## EXPENSES

Short Term Rental Cleaning	\$ 15,150.00
Short Term Rental Supplies	\$ 1,316.81
General Maintenance Labor	\$ 2,546.25
Legal and other professional fees	\$ 1,045.00
Short Term Rental Management (20%)	\$ 20,905.32
Commercial Management (10%)	\$ 6,732.85
Insurance	\$ 12,944.76
Repairs	\$ 601.99
Replacement Reserves	\$ 1,500.00
Property Tax	\$ 4,325.86
Electric (STR Units)	\$ 7,368.54
Water	\$ 4,768.55
CAM - NNN Reimbursement	-\$4,410.38
Insurance - NNN Reimbursement	-\$4,177.92
Property Tax - NNN Reimbursement	-\$1,469.30
Water - NNN Reimbursement	-\$3,930.91

## TOTALS

Gross Rental Income	\$ 181,912.73
Total Expenses	\$ 73,775.02
NET Operating Income	\$ 108,137.71
Cap Rate	8.3%

A TRUSTED AND RESPECTED  
MEMBER OF THE COMMUNITY,  
O'CONNOR REAL ESTATE  
BRINGS 20 YEARS OF  
EXPERIENCE AND EXPERTISE  
TO THE COMMERCIAL OFFICE  
AND RETAIL MARKET.

For more information about 8116 Kercheval,  
please contact O'Connor Real Estate

**Vincent Mazzola**  
**+ 313 704 2678**  
**[vincent@oconnordetroit.com](mailto:vincent@oconnordetroit.com)**

**O'Connor** Real Estate

The information used in this marketing material was taken from sources believed to be reliable. O'Connor Real Estate makes no representation, warranty, or endorsement made as to the accuracy, reliability, adequacy, or completeness of any information or analysis contained herein and disclaims any and all liability that may be based on such information, errors therein or omissions therefrom. You and your advisors should conduct a careful and independent investigation of the property to determine your satisfaction with the suitability of the property for your needs.