

4365 CANAL AVENUE SW
GRANDVILLE, MICHIGAN

RETAIL FOR LEASE
1,576 – 5,417 Square Feet Available



**SIGNATURE
ASSOCIATES**
KNOW SIGNATURE | KNOW RESULTS

RIVERTOWN MARKET



PROPERTY FEATURES

- 24,822 total building square feet
- 1,576 – 5,417 square feet available
- Located at corner of Canal Avenue and Rivertown Parkway
- Texas Roadhouse on site
- Building and pylon signage available
- Beautiful glass window frontage
- Ample parking
- Join Jimmy John's, Sports Clips & Kumon



For more information, please contact:

JOE RIZQALLAH
(616) 822 6310
jrizqallah@signatureassociates.com

SIGNATURE ASSOCIATES
1188 East Paris Ave SE, Suite 220
Grand Rapids, MI 49546
www.signatureassociateswm.com

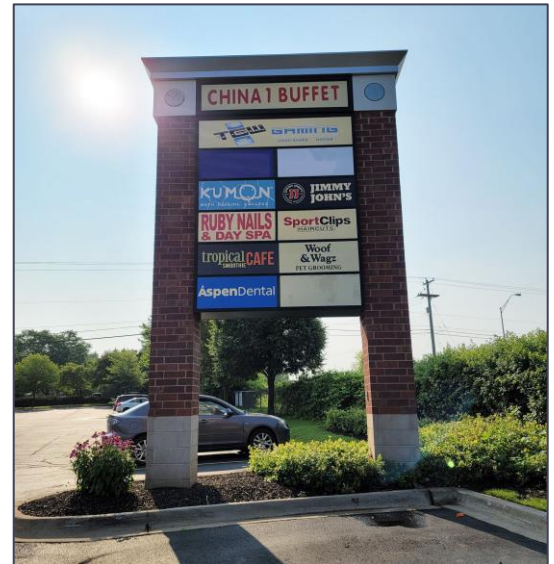
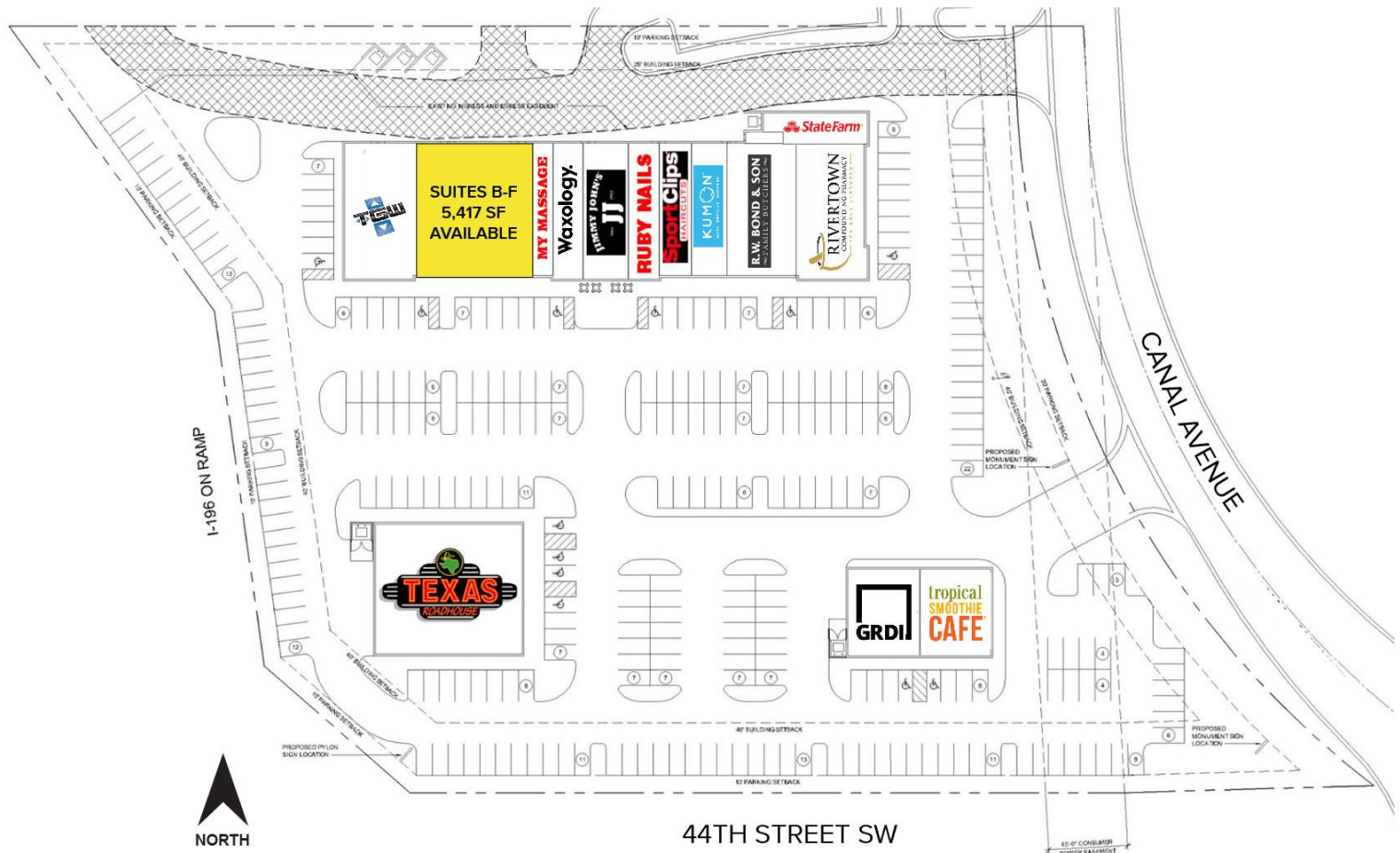
Information is subject to verification and no liability for errors or omissions is assumed. Price is subject to change and listing withdrawal.

4365 Canal Avenue SW – Grandville, Michigan

Retail For Lease

1,576 – 5,417
Square Feet
AVAILABLE

Site Plan



For more information, please contact:

JOE RIZQALLAH

(616) 822 6310

jrizqallah@signatureassociates.com

SIGNATURE ASSOCIATES

1188 East Paris Ave SE, Suite 220

Grand Rapids, MI 49546

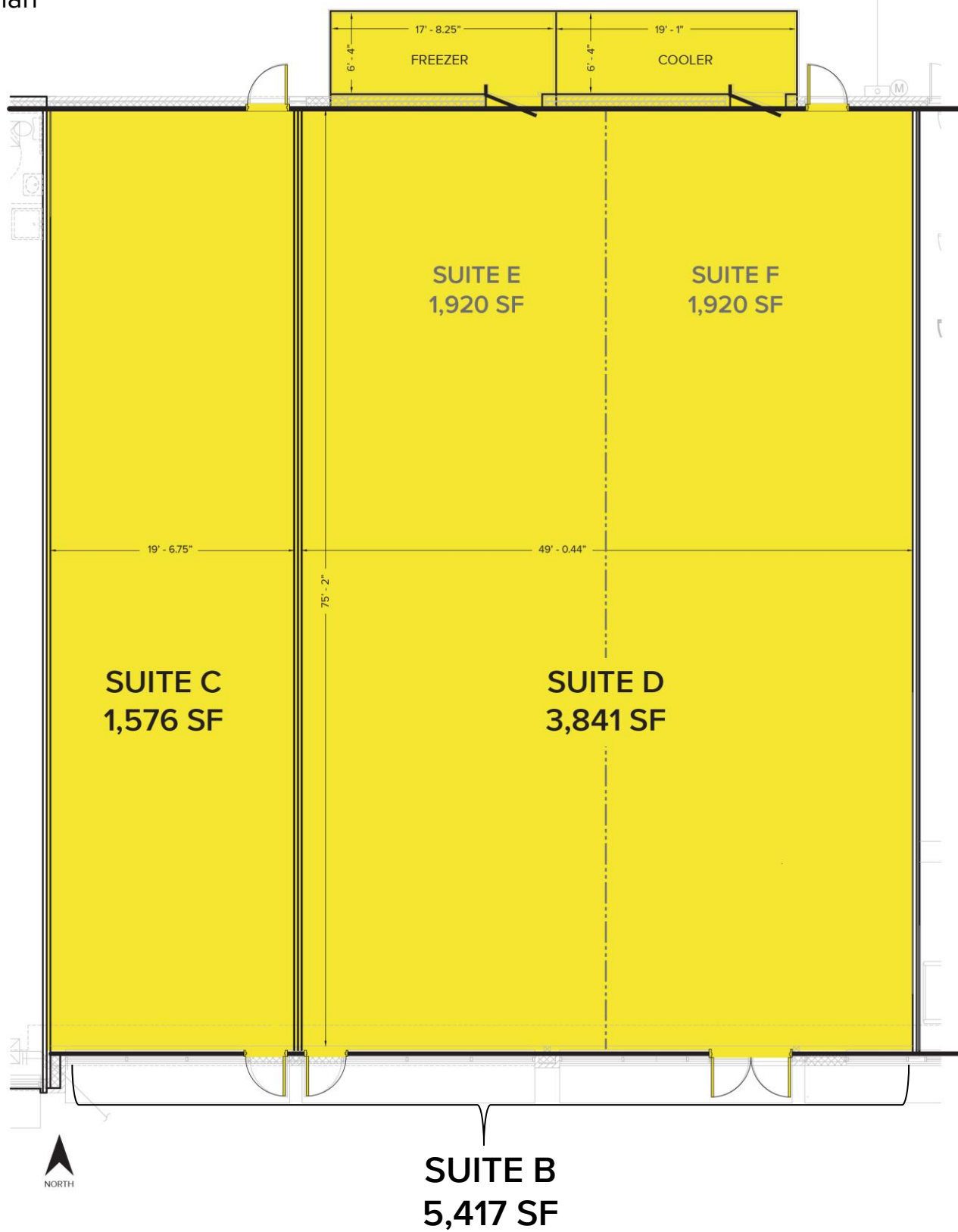
www.signatureassociateswm.com

4365 Canal Avenue SW – Grandville, Michigan

Retail For Lease

1,576 – 5,417
Square Feet
AVAILABLE

Floor Plan



For more information, please contact:

JOE RIZQALLAH

(616) 822 6310

jrizqallah@signatureassociates.com

SIGNATURE ASSOCIATES

1188 East Paris Ave SE, Suite 220

Grand Rapids, MI 49546

www.signatureassociateswm.com

Information is subject to verification and no liability for errors or omissions is assumed. Price is subject to change and listing withdrawal.

Retail For Lease

1,576 – 5,417
Square Feet
AVAILABLE

Aerial



DEMOGRAPHICS		
	POPULATION	MED. HH INCOME
1 MILE	7,670	\$83,828
3 MILE	54,165	\$92,137
5 MILE	136,275	\$89,846

TRAFFIC COUNTS (TWO-WAY)	
32,191	Rivertown Pkwy W of Canal Ave
38,972	Rivertown Pkwy E of Canal Ave
9,160	Canal Ave N of Rivertown Pkwy
9,903	Canal Ave S of Rivertown Pkwy

For more information, please contact:

JOE RIZQALLAH

(616) 822 6310

jrizzgallah@signatureassociates.com

SIGNATURE ASSOCIATES

1188 East Paris Ave SE, Suite 220

Grand Rapids, MI 49546

www.signatureassociateswm.com

Information is subject to verification and no liability for errors or omissions is assumed. Price is subject to change and listing withdrawal.