

Publix®



jiffylube

865

Char Ann Dr



35,000 VPD

LEE
869
COUNTY



SITE



22,000 VPD

LEE HEALTH

Summerlin Square Dr

AVAILABLE

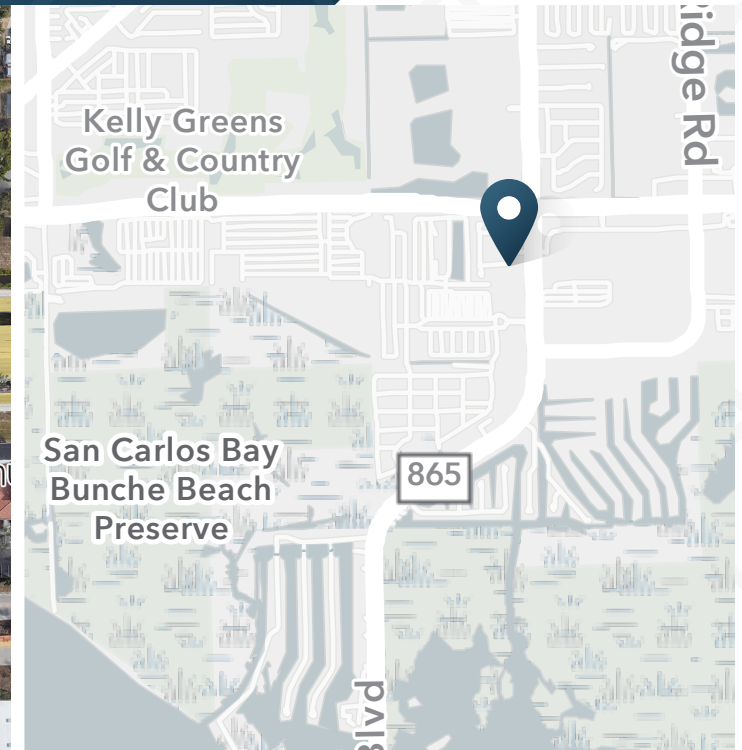
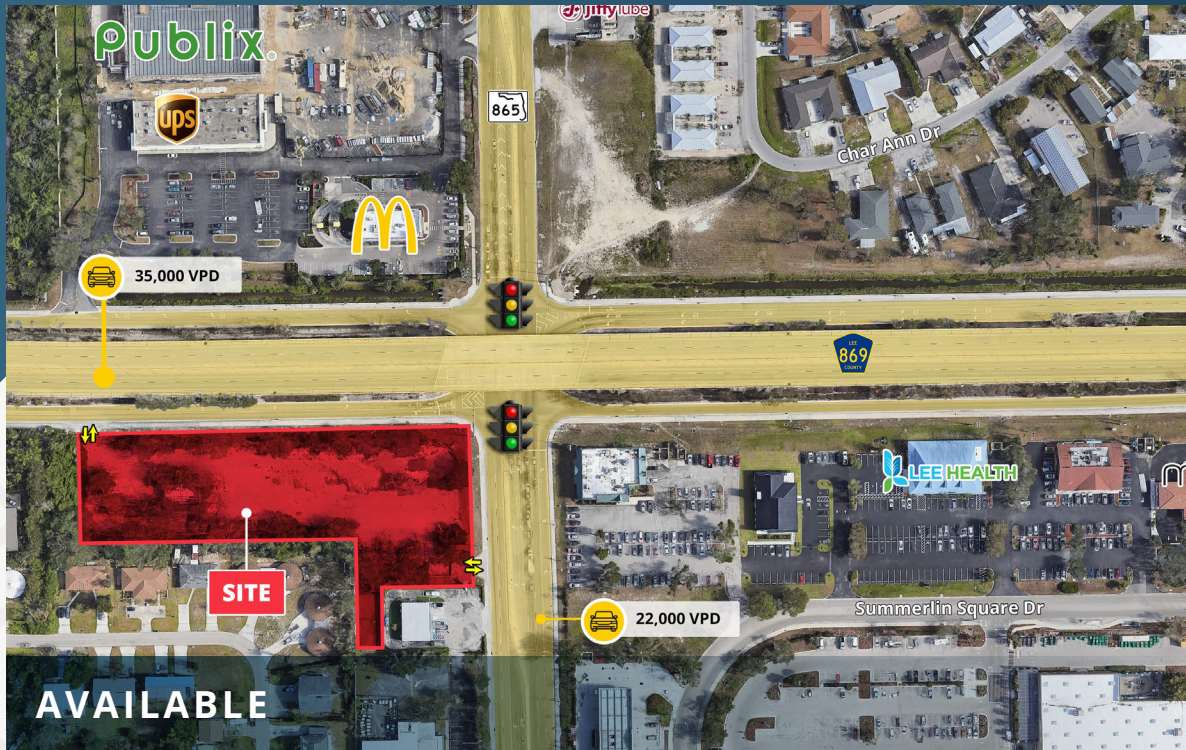
Corner Site Available off of San Carlos Blvd

17050 San Carlos Blvd | Fort Myers, FL



Corner Site Available off of San Carlos Blvd

17050 San Carlos Blvd | Fort Myers, FL



2.76 AC
Available

Brokers -

Jacob Rasnick

jacob.rasnick@srsre.com

Grant Burt

grant.burt@srsre.com

John Fahey

john.fahey@srsre.com

ABOUT THE PROPERTY

- Currently zoned Commercial Planned Development (CPD) with permits a variety of commercial uses such as Car washes, Convenience stores, Banks, Restaurants, Self-Storage, etc.
- Located in proximity of new Publix and existing Walmart.
- Has No Further Action letter.
- Previous building was demolished.

JOIN THESE RETAILERS





Publix

ups

McDonald's

Jiffy Lube

Char Ann Dr

35,000 VPD

865

869
LEE COUNTY

SITE

LEE HEALTH

müv

Summerlin Square Dr

22,000 VPD

Indian Creek

K

Walmart
Supercenter





Corner Site Available off of San Carlos Blvd

17050 San Carlos Blvd | Fort Myers, FL



DEMOGRAPHIC HIGHLIGHTS

5 MINUTE DRIVE

11,889 Population	15,805 Total Daytime Population	\$80,040 Average Household Income	6,115 Total Households
----------------------	---------------------------------------	---	------------------------------

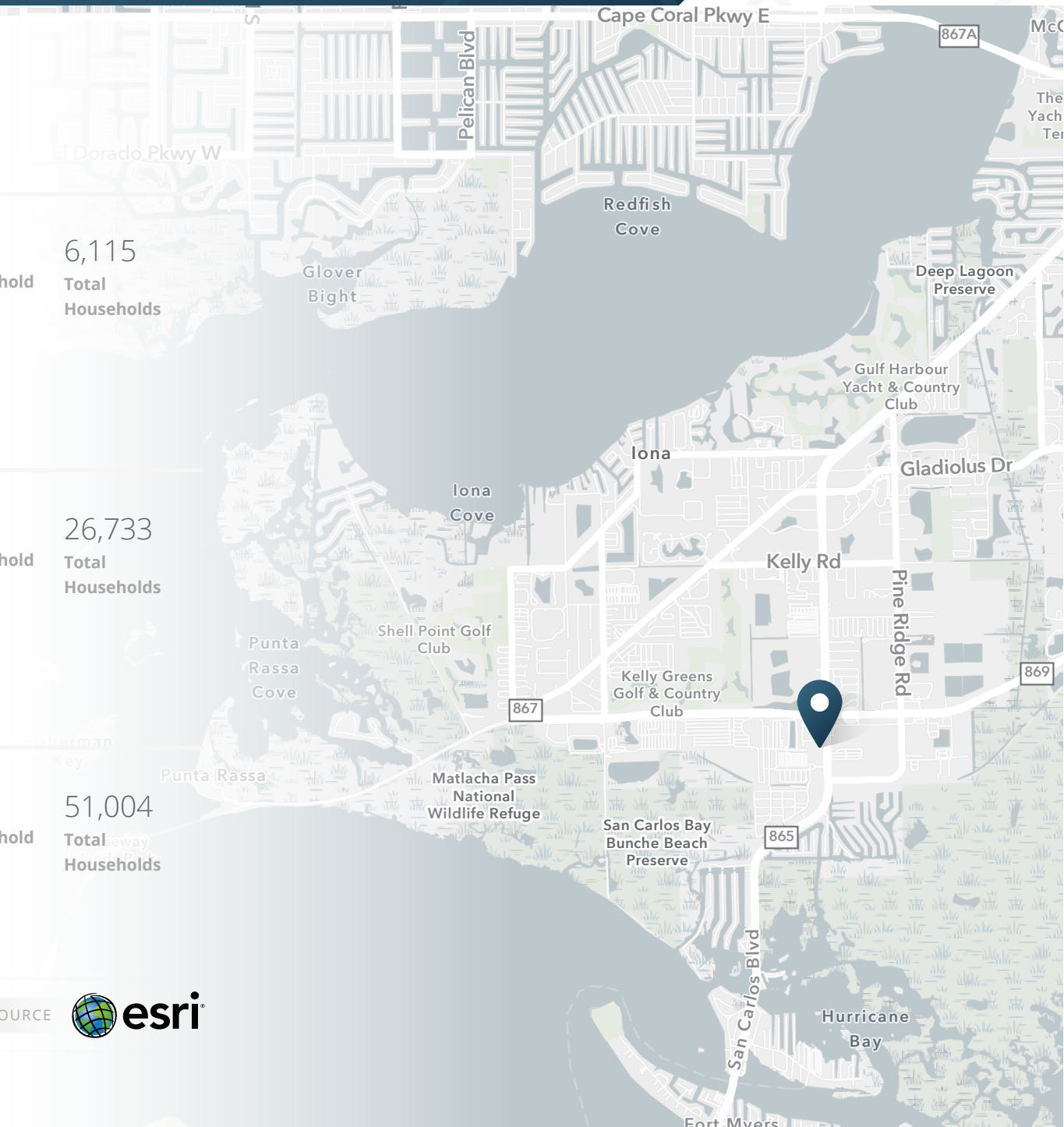
10 MINUTE DRIVE

52,230 Population	60,141 Total Daytime Population	\$97,687 Average Household Income	26,733 Total Households
----------------------	---------------------------------------	---	-------------------------------

15 MINUTE DRIVE

102,017 Population	135,634 Total Daytime Population	\$95,491 Average Household Income	51,004 Total Households
-----------------------	--	---	-------------------------------

> **Want more?** Contact us for a complete demographic, foot-traffic, and mobile data insights report.





SRS Real Estate Partners

1501 W Cleveland St, Suite 300
Tampa, FL 33606
813.371.0980

John Fahey
813.551.0895
john.fahey@srsre.com

Grant Burt
813.379.3445
grant.burt@srsre.com

Jacob Rasnick
813.379.3444
jacob.rasnick@srsre.com

SRSRE.COM

© SRS Real Estate Partners

The information presented was obtained from sources deemed reliable;
however SRS Real Estate Partners does not guarantee its completeness or accuracy.