

FOR SALE



Somerset County Development Site

Main Street, Stoystown, PA 15531



Property Description

HIGHLY VISIBLE DEVELOPMENT SITE FOR SALE!

Property Highlights

- 15.6 ACRES
- SIGNIFICANT FRONTAGE ON US ROUTE 30
- IMMEDIATE ACCESS TO US ROUTE 219
- CONVENIENT ACCESS TO JOHNSTOWN, LIGONIER, AND SOMERSET, PA MARKETS
- IDEA FOR A VARIETY OF USES
- PROPERTY ID: 210007170
- MAP NUMBER: S21-013-053-00
- SALE PRICE: \$150,000.00



PRESENTED BY:

GENE GALIARDI
O:412.391.3500 | C:412.580.0636
ggaliardi@penncom.com

RAY THIMONS
O:412.391.3500 | C:412.638.1681
rthimons@penncom.com



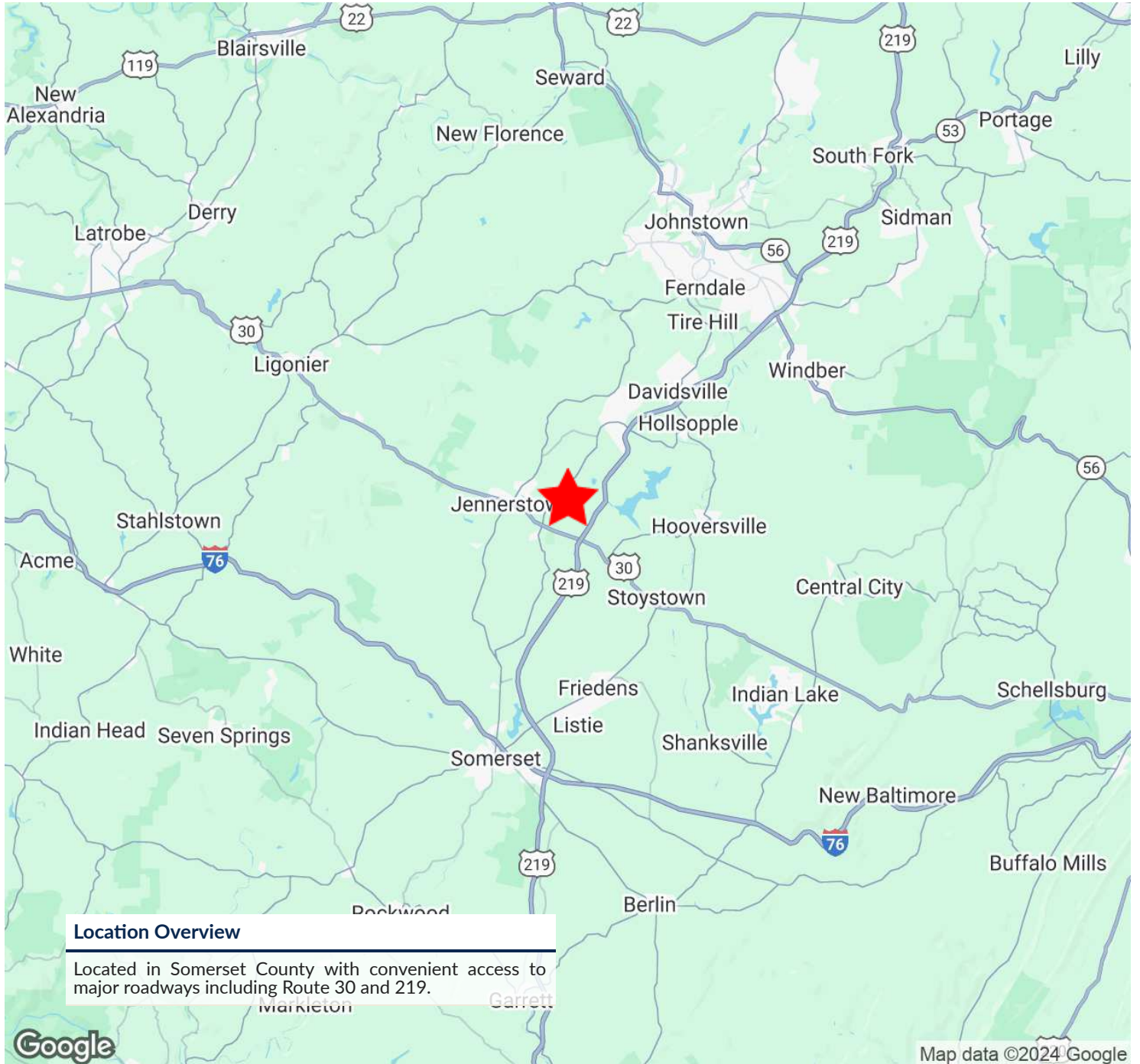
**PENNSYLVANIA
COMMERCIAL
REAL ESTATE INC.**

FOR SALE



Somerset County Development Site

Main Street, Stoystown, PA 15531



PRESENTED BY:

GENE GALIARDI
 O:412.391.3500 | C:412.580.0636
 ggaliardi@penncom.com

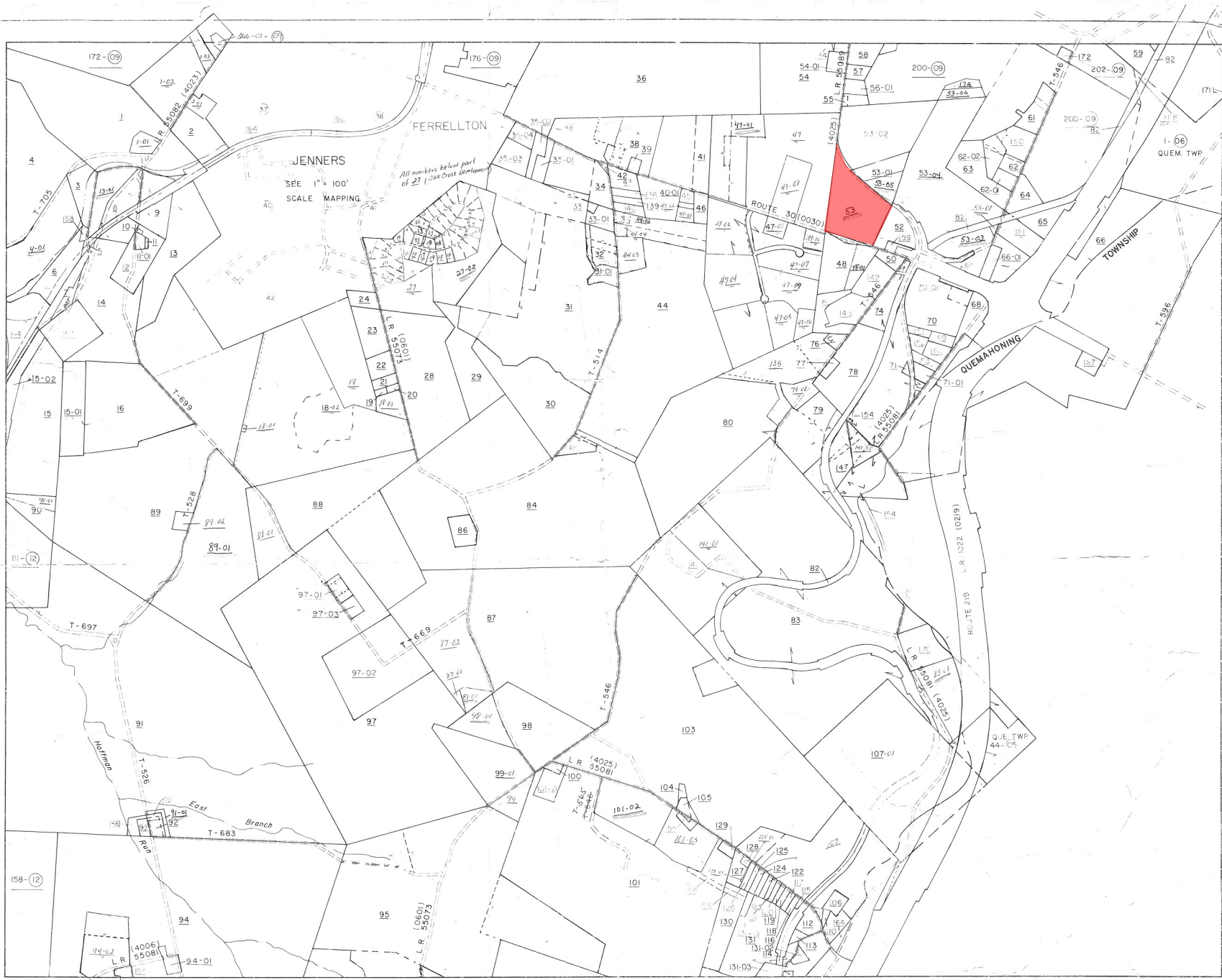
RAY THIMONS
 O:412.391.3500 | C:412.638.1681
 rthimons@penncom.com



**PENNSYLVANIA
 COMMERCIAL
 REAL ESTATE INC.**

910 SHERATON DRIVE, SUITE 340, MARS, PA 16046 // 412.391.3500

PENNCOM.COM



REVISED	DATE	BY	REVISED	DATE	BY

SHEET INDEX

08	09	10
12	13	14
14	15	

**FOR GENERAL
REFERENCE ONLY**



**COPY
AS OF
12-18-23**

PROPERTY MAP
JENNER TOWNSHIP
SOMERSET COUNTY
PENNSYLVANIA
SHEET 13