

# 1343 L ST NW

Washington, DC 20005

## Office For Lease

~10,000 SF



Leasing Information:  
202.513.6700

**Adam Biberaj**  
202.513.6736  
abiberaj@lpc.com

**Merrill Turnbull**  
202.513.6713  
mturnbull@lpc.com

**Tim Whitebread**  
202.513.6712  
twhitebread@lpc.com

## Lincoln

Lincoln Property Company  
101 Constitution Avenue, NW Suite 325 East  
Washington, DC 20001

[www.lpc.com](http://www.lpc.com)



# 1343 L ST NW

Washington, DC 20005

Office For Lease



### Property Highlights

- Secure surface parking lot with at least 6 spaces exclusive to Tenant in rear of building
- Rooftop terrace for entertainment and events
- Opportunity for a 10,000 SF full-building user
- Space ideal for media, studio, broadcasting, and creative tenants

### Availabilities

- Lower Level
- Ground Floor
- Second Floor

### SF

- 3,200 SF
- 3,200 SF
- 2,500 SF

### Date Available

- Immediately
- Immediately
- Immediately

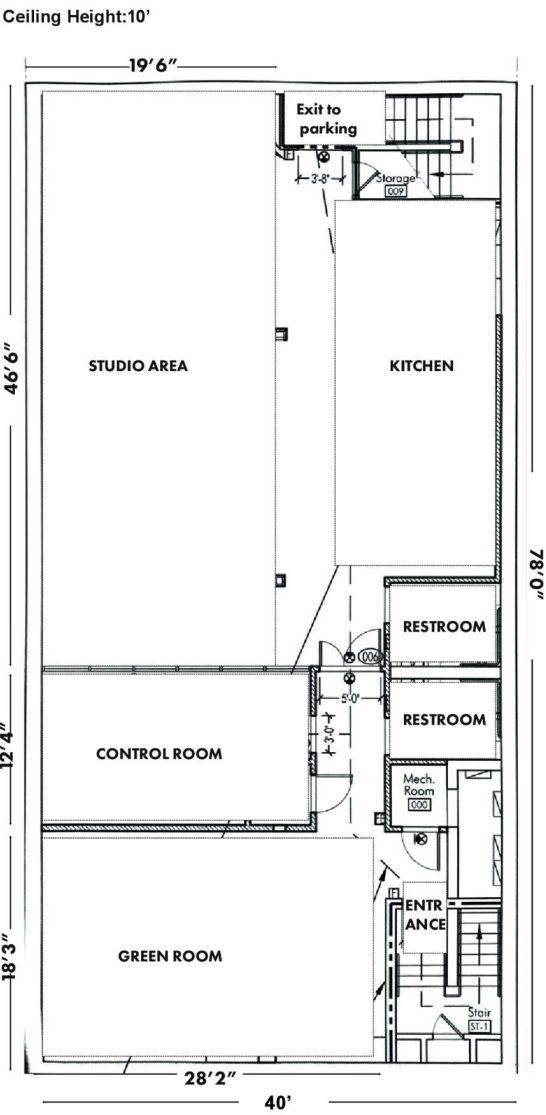
**Adam Biberaj**   **Merrill Turnbull**   **Tim Whitebread**  
202.513.6736   202.513.6713   202.513.6712  
abiberaj@lpc.com   mturnbull@lpc.com   twhitebread@lpc.com

Lincoln

1343 L ST NW

Washington, DC 20005

Lower Level



Suite	Size	Lease Rate	Description	Virtual Tour
Lower Level	3,200 SF	Negotiable	Fully built-out studio with lighting, control room and green room all in-place with 10' ceiling heights. This floor also has a brand-new kitchen with island seating and two restrooms	<a href="#">View Here</a>

Adam Biberaj

202.513.6736

abiberaj@lpc.com

Merrill Turnbull

202.513.6713

mturnbull@lpc.com

Tim Whitebread

202.513.6712

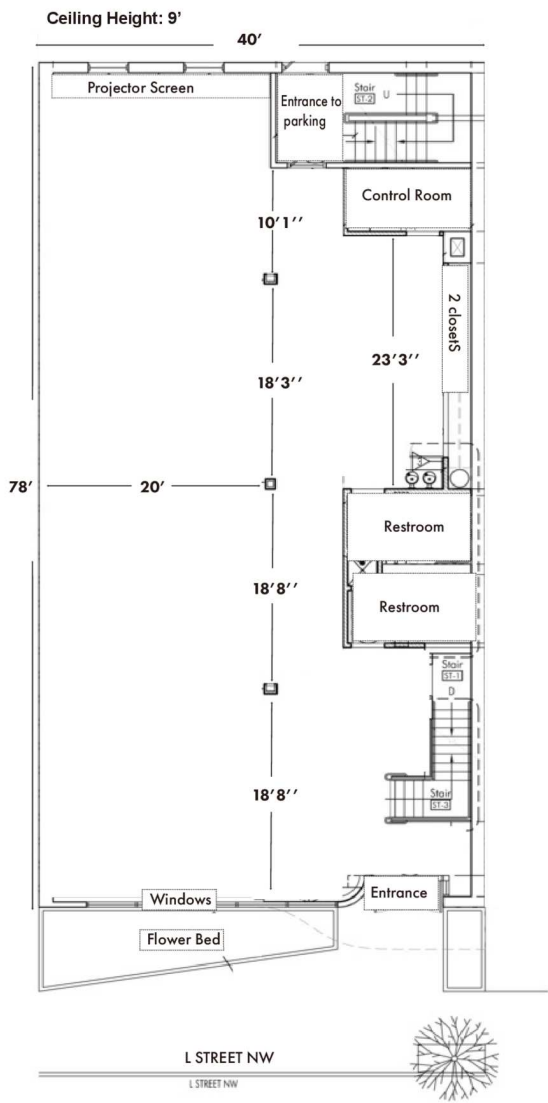
twhitebread@lpc.com

Lincoln

# 1343 L ST NW

Washington, DC 20005

## Ground Level



Suite	Size	Lease Rate	Description	Virtual Tour
Ground Floor	3,200 SF	Negotiable	Open floor plan with polished concrete floors, very high exposed ceilings, and two private restrooms	<a href="#">View Here</a>

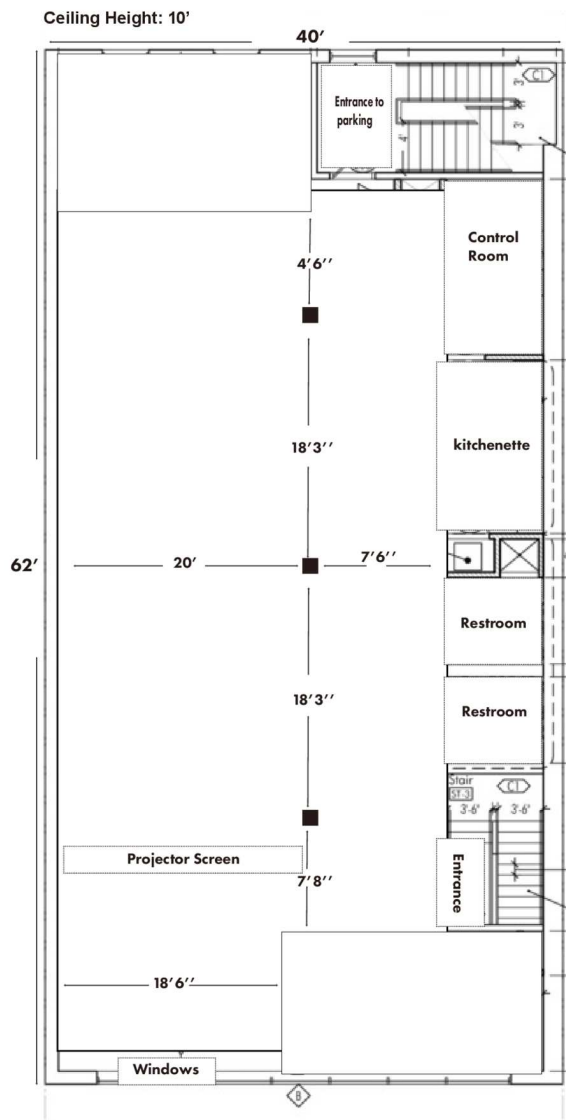
Adam Biberaj    Merrill Turnbull    Tim Whitebread  
202.513.6736    202.513.6713    202.513.6712  
abiberaj@lpc.com    mturnbull@lpc.com    twhitebread@lpc.com

Lincoln

1343 L ST NW

Washington, DC 20005

Second Level



Suite	Size	Lease Rate	Description	Virtual Tour
Second Floor	2,500 SF	Negotiable	Open floor plan with polished concrete floors, one office overlooking L Street, very high exposed ceilings, kitchenette, and two private restrooms	<a href="#">View Here</a>

Adam Biberaj

202.513.6736

abiberaj@lpc.com

Merrill Turnbull

202.513.6713

mturnbull@lpc.com

Tim Whitebread

202.513.6712

twhitebread@lpc.com

Lincoln





# 1343 L ST NW

Washington, DC 20005

Leasing Information:  
202.513.6700

**Adam Biberaj**  
202.513.6736  
abiberaj@lpc.com

**Merrill Turnbull**  
202.513.6713  
mturnbull@lpc.com

**Tim Whitebread**  
202.513.6712  
twhitebread@lpc.com

**Lincoln**  
Lincoln Property Company  
101 Constitution Avenue, NW Suite 325 East  
Washington, DC 20001

[www.lpc.com](http://www.lpc.com)