

Centrally Located Office Building

For Lease \$20 Gross

2201 NE 52nd St. #202
Lighthouse Point, FL 33064



FOR LEASE	Suite 202 approx. 1200 RSF		
DESCRIPTION	Updated office suite for lease in well maintained office building with abundant parking. Features include: numerous offices, kitchenette area, comfortable reception and waiting area, and 3 separate entrances. High income demographic and centrally located to all major arteries.		
LOCATION	Located on East Side of Federal Highway. Couple minutes South of 10th Street.		
PARKING/ YEAR BUILT	22 Spaces / 1991		
PRICING	Lease rate is \$20 Gross. Tenant pays own electric.		
ZONING/FOLIO	B- 3A / 4843-07-14-0161		
DEMOGRAPHICS 2020 ESTIMATES		1 mile	3 mile
	HH Population:	7,478	45,198
	Average HH Income:	\$94,641	\$83,649
			5 mile
			96,052
			\$86,826

1233 E. Hillsboro Blvd
Deerfield Beach, FL
33441

954.427.8686 T.
954.427.0117 F.

CAMPBELL & ROSEMURGY
COMMERCIAL REAL ESTATE

Paulina Kucharska

718.593.9631

pkagentfl@gmail.com

Centrally Located Office Building

For Lease \$20 Gross

2201 NE 52nd St. #202
Lighthouse Point, FL 33064



CAMPBELL & ROSEMURGY COMMERCIAL REAL ESTATE

Paulina Kucharska

1233 E. Hillsboro Blvd
Deerfield Beach, FL
33441

954.427.8686 T.
954.427.0117 F.

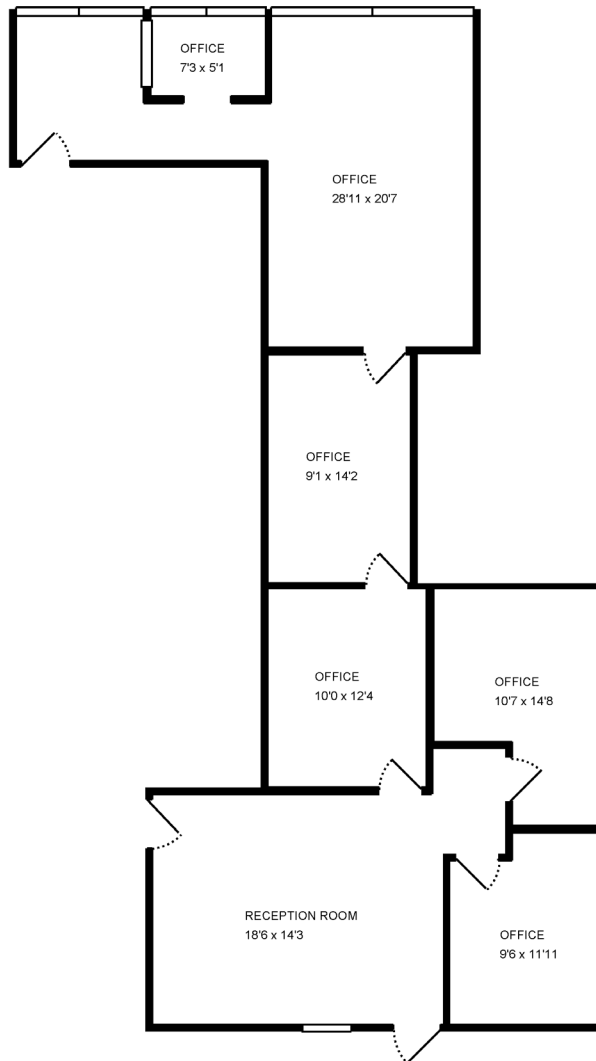
We obtained the information above from sources we believe to be reliable, but we have not verified its accuracy and make no guarantee, warranty or representation about it. It is submitted subject to the possibility of errors, omissions, change of price, rental or other conditions, prior sale, lease or financing, or withdrawal without notice. We include professions, opinions, assumptions or estimates for example only, and they may not represent current or future performance. **718.593.9631** pkagentfl@gmail.com We would conduct your own investigation of the property and transaction.

Campbell and Rosemurgy Real Estate is a licensed Real Estate Broker. This offering is subject to errors, omissions, prior sale or withdrawal without notice. Any reliance on this information is solely at your own risk.

Centrally Located Office Building

For Lease \$20 Gross

2201 NE 52nd St. #202
Lighthouse Point, FL 33064



Total interior square footage on page: 1194 sf

The interior square footage listed is living space only and is not taxable square footage

Page 1

CAMPBELL & ROSEMURGY
COMMERCIAL REAL ESTATE

Paulina Kucharska

1233 E. Hillsboro Blvd
Deerfield Beach, FL
33441

954.427.8686 T.
954.427.0117 F.

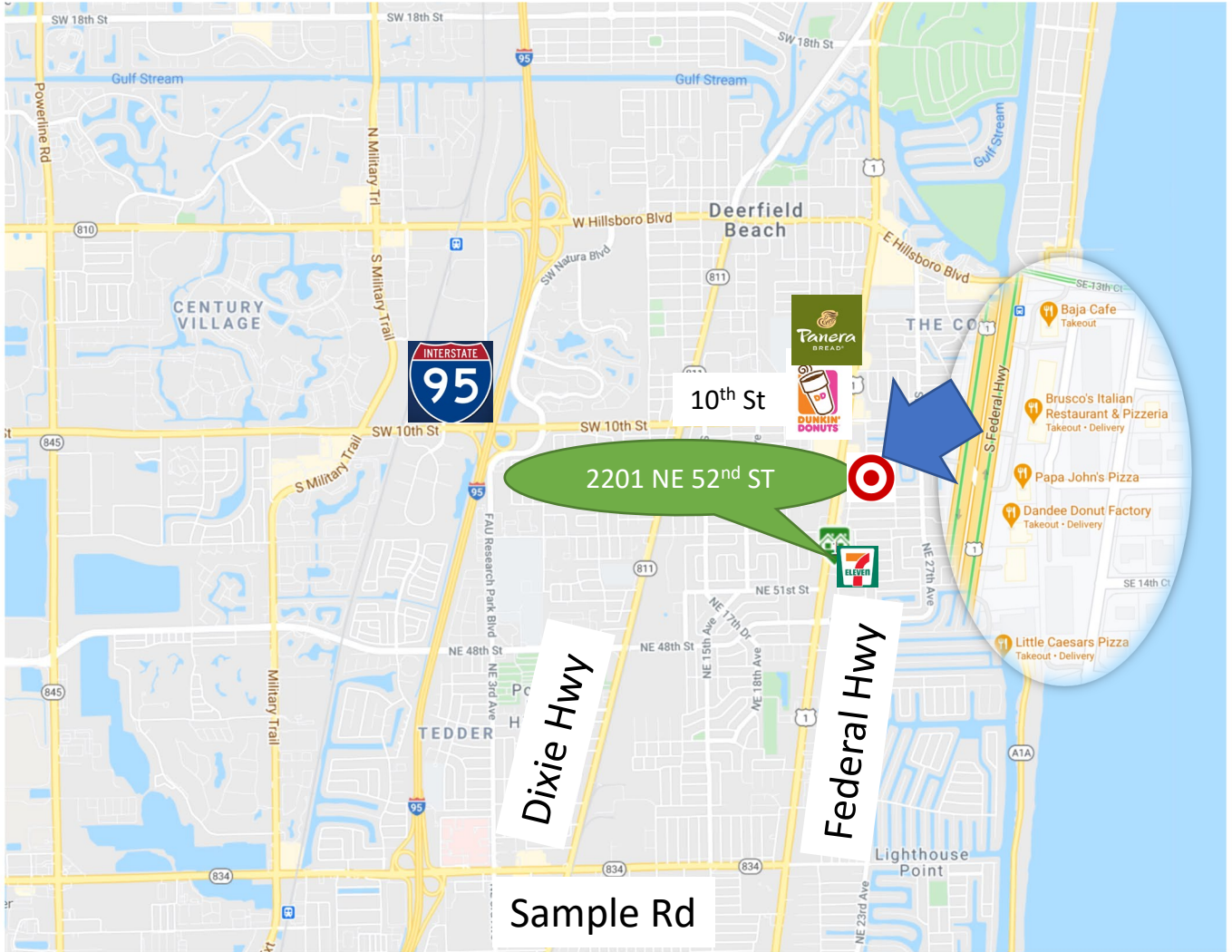
We obtained the information above from sources we believe to be reliable, but we have not verified its accuracy and make no guarantee, warranty or representation about it. It is submitted subject to the possibility of error, omission, change of price, rental or other conditions, prior sale, lease or financing, or withdrawal without notice. We make no prediction, opinion, assumption or estimates for example only, and they may not represent current or future performance. **pkagentfl@gmail.com** would conduct your own investigation of the property and transaction.

Campbell and Rosemurgy Real Estate is a licensed Real Estate Broker. This offering is subject to errors, omissions, prior sale or withdrawal without notice. Any reliance on this information is solely at your own risk.

Centrally Located Office Building

For Lease \$20 Gross

2201 NE 52nd St. #202
Lighthouse Point, FL 33064



CAMPBELL & ROSEMURGY

COMMERCIAL REAL ESTATE

Paulina Kucharska

1233 E. Hillsboro Blvd
Deerfield Beach, FL
33441

954.427.8686 T.
954.427.0117 F.

718.593.9631

We obtained the information above from sources we believe to be reliable, but we have not verified its accuracy and make no guarantee, warranty or representation about it. It is submitted subject to the possibility of errors, omissions, change of price, rental or other conditions, prior sale, lease or financing, or withdrawal without notice. We make no prediction, opinion, assumption or estimate for example only, and they may not represent current or future performance. **pkagentfl@gmail.com** would conduct your own investigation of the property and transaction.

Campbell and Rosemurgy Real Estate is a licensed Real Estate Broker. This offering is subject to errors, omissions, prior sale or withdrawal without notice. Any reliance on this information is solely at your own risk.