

Publix #0356 - Lake Miriam Square

4730 S. Florida Avenue
Lakeland, FL 33813
Lat 27.978, Long -81.957

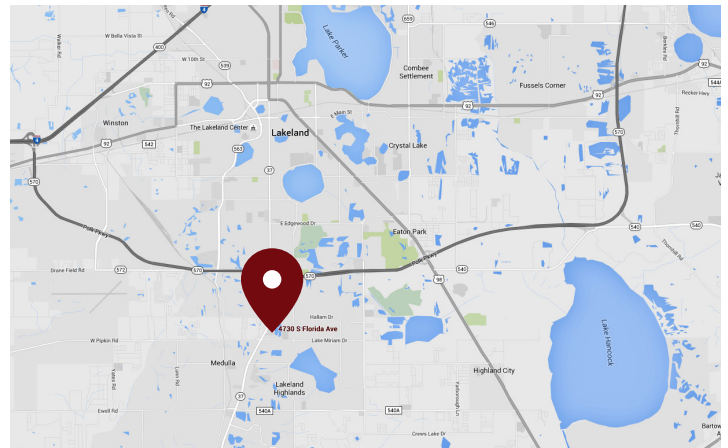
FOR LEASE



1,016 - 19,930 SF AVAILABLE

PROPERTY HIGHLIGHTS

- Publix-Anchored Center
- Located at the Signalized High Traffic Intersection of US 37/South Florida Avenue, a Major North/South Artery and Lake Miriam Drive
- 1.3 Miles South of Polk Parkway
- 4.5 Miles South of Downtown
- 5.8 Miles West of US Highway 98
- 6.4 Miles East of County Line Road
- Signalized Ingress/Egress and Multiple Points of Access
- Well Established Mix of Local and National Tenants
- Traffic Count: 56,100 VPD



DEMOGRAPHICS	1 Mile	3 Miles	5 Miles
Total Population	5,966	62,473	131,832
Daytime Population	7,760	60,093	140,564
Total Households	2,265	24,751	53,545
Avg. HH Income	\$99,200	\$96,323	\$82,696

Data provided by Placer Labs Inc. (www.placer.ai) & Esri

Sandra Woodworth

813.210.7509 | swoodworth@crossmanco.com
9950 Princess Palm Avenue, Suite 340, Tampa, FL

Licensed Real Estate Broker. No warranty expressed or implied has been made to the accuracy of the information provided herein, no liability assumed for error or omission.



Crossman & Company

www.crossmanco.com

Publix #0356 - Lake Miriam Square

4730 S. Florida Avenue
Lakeland, FL 33813
Lat 27.978, Long -81.957

FOOT TRAFFIC OVERVIEW

EST. # OF CUSTOMERS ANNUALLY



EST. # OF VISITS ANNUALLY



AVG. VISITS / CUSTOMER



AVG. LENGTH-OF-STAY / VISIT



TOP 3 DAYS



Saturday	338,337
Sunday	316,638
Friday	308,090

OF VISITS

TOP 3 HOURS

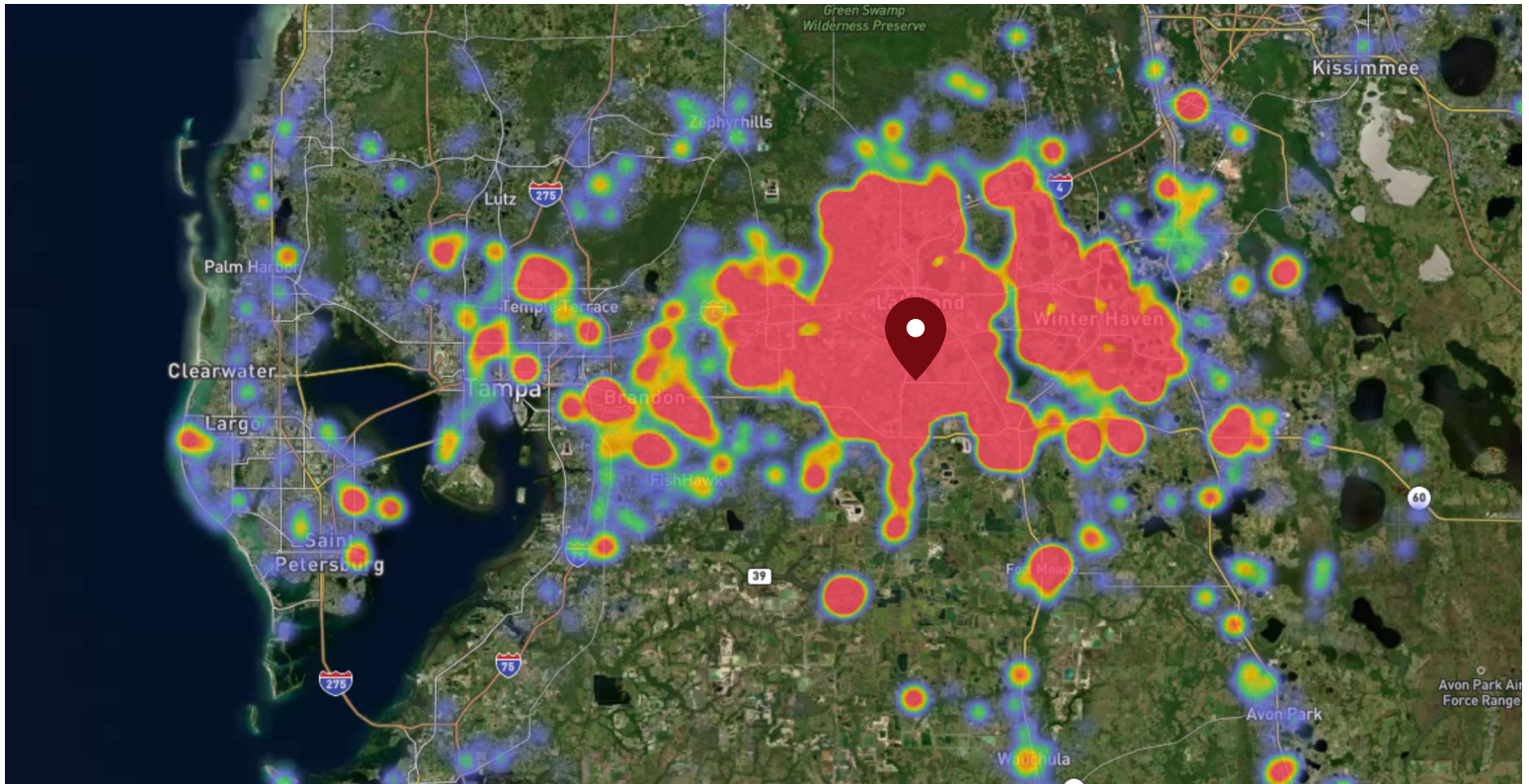


5-6 PM	404,980
6-7 PM	402,221
12-1 PM	400,082

OF VISITS

Data provided by Placer Labs Inc. (www.placer.ai) June 1, 2020 - May 31, 2021

SITE VISIT DENSITY



Red, orange, and yellow colors represent the location of 60% of site visitors

Data provided by Placer Labs Inc. (www.placer.ai)

Sandra Woodworth

813.210.7509 | swoodworth@crossmanco.com
9950 Princess Palm Avenue, Suite 340, Tampa, FL

Licensed Real Estate Broker. No warranty expressed or implied has been made to the accuracy of the information provided herein, no liability assumed for error or omission.



Crossman & Company

www.crossmanco.com