

2500 LEAGUE ISLAND BOULEVARD

Award-Winning cGMP Space in the Philadelphia Navy Yard



BINSWANGER
UNIQUELY SPECIALIZED SINCE 1931

Gattuso



130,307 SF on 6.50 AC
R&D Flex/Industrial space



Building can be subdivided to accommodate tenants from 40,000 SF to 130,000 SF



Designed by SITIO architects and targeting LEED v4 Silver Certification



Keystone Opportunity Zone (KOZ) Program: one of the top economic development strategies in the nation, qualified parcels grant users with state and local tax benefits.



Tap into Philadelphia's innovation ecosystem, renowned for being one of the leading talent hubs for biotech companies in the nation.



Knock-Out Panels for Customizable Loading Capabilities:
9' by 10' Dock Door Present



Opportunity to work with life sciences companies in the Navy Yard submarket



Ample Car Spaces on both sides of building



250 PSF live load capacity for the floor slab, with structurally upgraded roof (60 PSF) for tenant equipment



30' clear height with 40' by 50'/60' column width
Fire Protection: Wet Sprinkler System



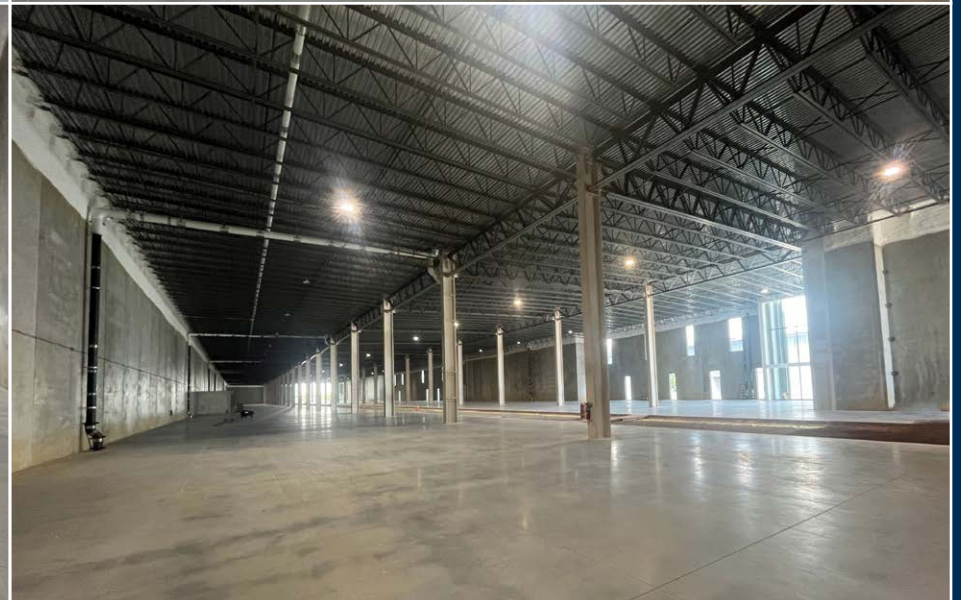
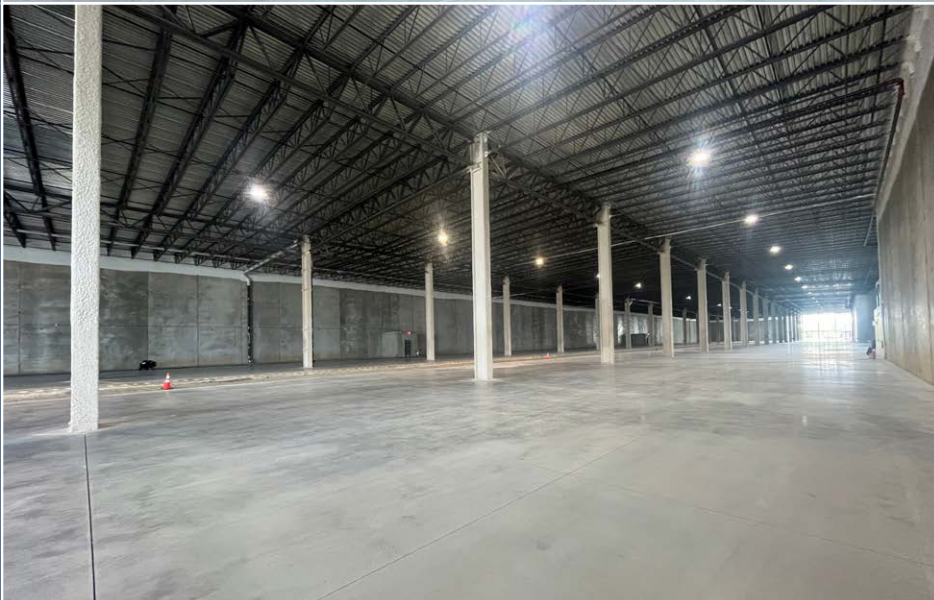
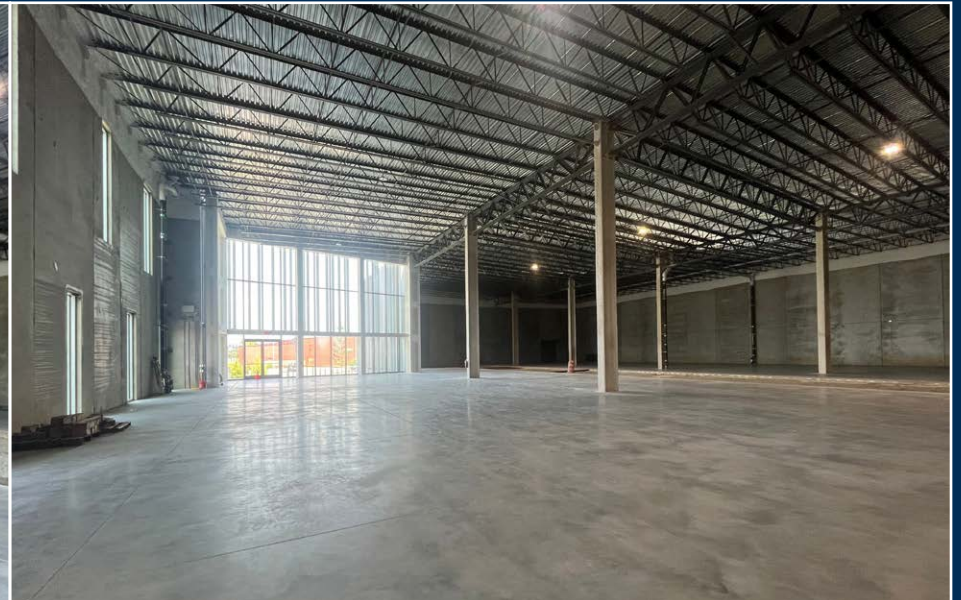
Dual circuit service to the site from the electric substation. Building serviced by a 1500kVa 13.2kv 480/277Y transformer, which can be upgraded to meet tenant requirements



Direct/immediate connections available on-site to electric power, natural gas (high-pressure), water, wastewater/sewer and fiber/broadband



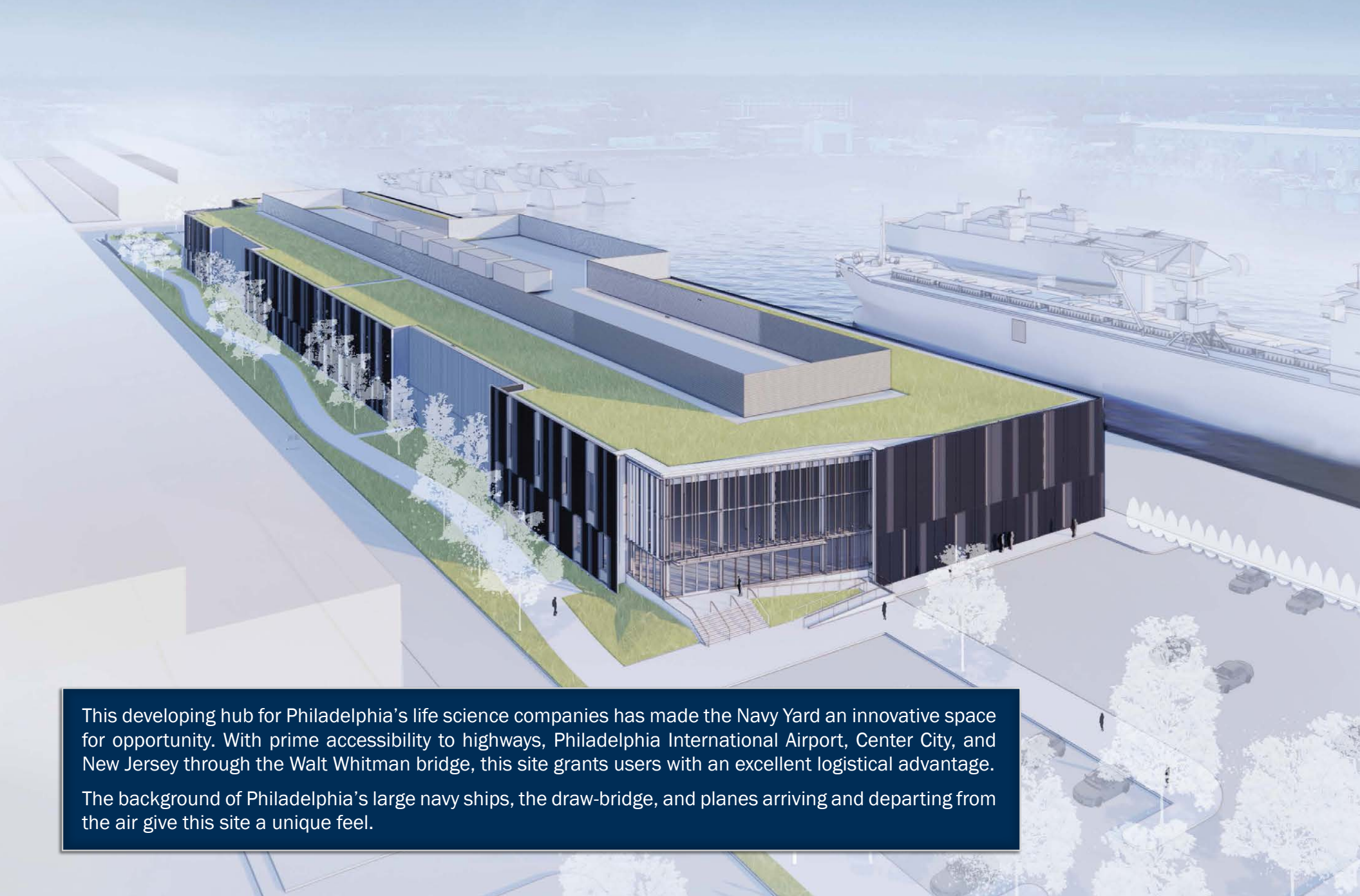
BUILDING SPECIFICATIONS



INTERIOR IMAGES

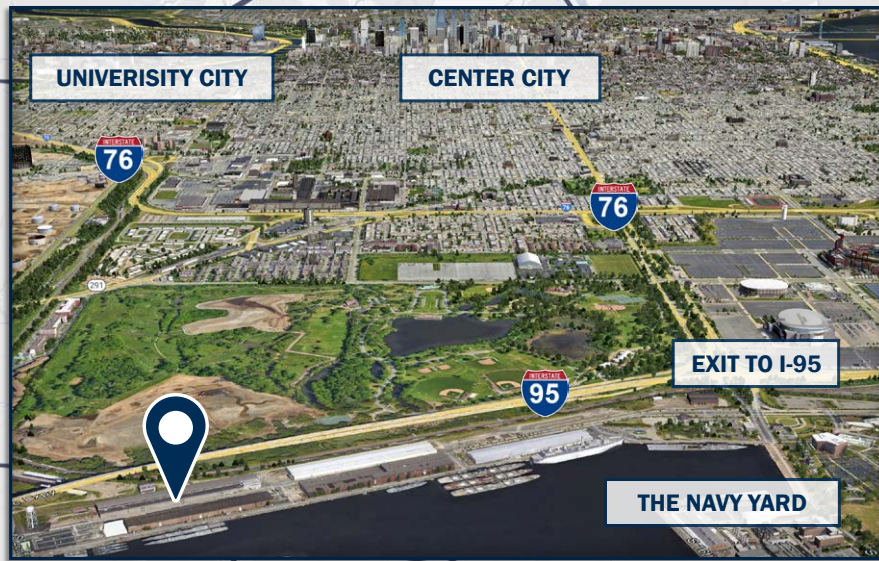


EXTERIOR IMAGES



This developing hub for Philadelphia's life science companies has made the Navy Yard an innovative space for opportunity. With prime accessibility to highways, Philadelphia International Airport, Center City, and New Jersey through the Walt Whitman bridge, this site grants users with an excellent logistical advantage. The background of Philadelphia's large navy ships, the draw-bridge, and planes arriving and departing from the air give this site a unique feel.

PROPERTY SETTING



LOCATION MAP

Gattuso



Three Logan Square
1717 Arch Street, Suite 5100
Philadelphia, PA 19103
www.binswanger.com



David Binswanger

Managing Director
215.448.6095
dbinswanger@binswanger.com



Tim Pennington

Senior Vice President & Partner
215.448.6266
tpennington@binswanger.com



Chris Pennington

Senior Vice President & Partner
215.448.6053
cpennington@binswanger.com



Matt Corrigan

Senior Vice President
215.448.6018
mcorrigan@binswanger.com

CONTACT INFORMATION