

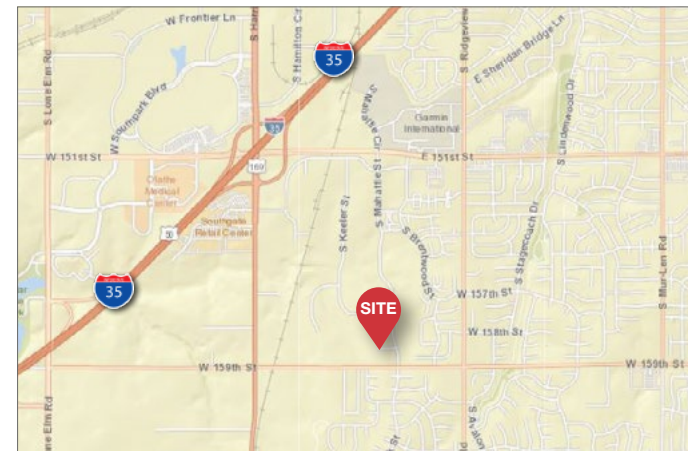


## 18919 W 158th Street

Olathe, Kansas

### Property Features

- ± 1.875 SF
- ± 50% office/showroom finish
- Drive-In loading
- Temperature controlled warehouse
- Excellent visibility from 159th Street
- Quick access to I-35
- Nearby amenities, restaurants, QuikTrip
- 2006 Modern Construction
- Lease rate: \$2,030 per month plus CAM



For more information:

**Evan Calkins**

+1 913 890 2017  
evan@nai-heartland.com

**Logan Rose**

+1 913 890 2013  
lrose@nai-heartland.com





For more information:

**Evan Calkins**

+1 913 890 2017 • [evan@nai-heartland.com](mailto:evan@nai-heartland.com)

**Logan Rose**

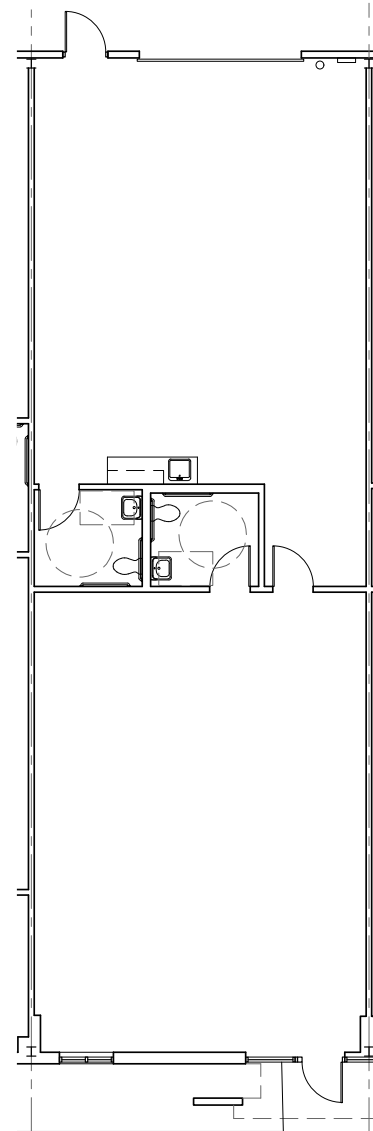
+1 913 890 2013 • [lrose@nai-heartland.com](mailto:lrose@nai-heartland.com)

4400 College Blvd, Suite 170  
Overland Park, KS 66211  
+1 913 362 1000  
[nai-heartland.com](http://nai-heartland.com)



### Floor Plan: 18919

- ± 1,875 SF
- ± 50% office/showroom finish
- One drive-in loading door
- Temperature controlled warehouse



For more information:

**Evan Calkins**

+1 913 890 2017 • [evan@nai-heartland.com](mailto:evan@nai-heartland.com)

**Logan Rose**

+1 913 890 2013 • [lrose@nai-heartland.com](mailto:lrose@nai-heartland.com)

4400 College Blvd, Suite 170  
Overland Park, KS 66211  
+1 913 362 1000  
[nai-heartland.com](http://nai-heartland.com)