

520 Main Street, Wilmington, MA 01887



## Retail & Office Space – For Lease



### **First Floor – Retail:**

- 2,600 +/-rsf
- \$4,800 per month plus utilities

### **Second Floor - Office:**

- 1,300 +/-sf
- \$1,600 per month plus utilities
- First floor loading dock door 8'H+/-
- 2 Restrooms per floor
- 9 Common parking spaces
- Zoned: General Business
- Pylon and building sign locations
- Conveniently located along Route 38

Edward Carbone, CCIM

781.935.5444 (o)

978.930.1579 (c)

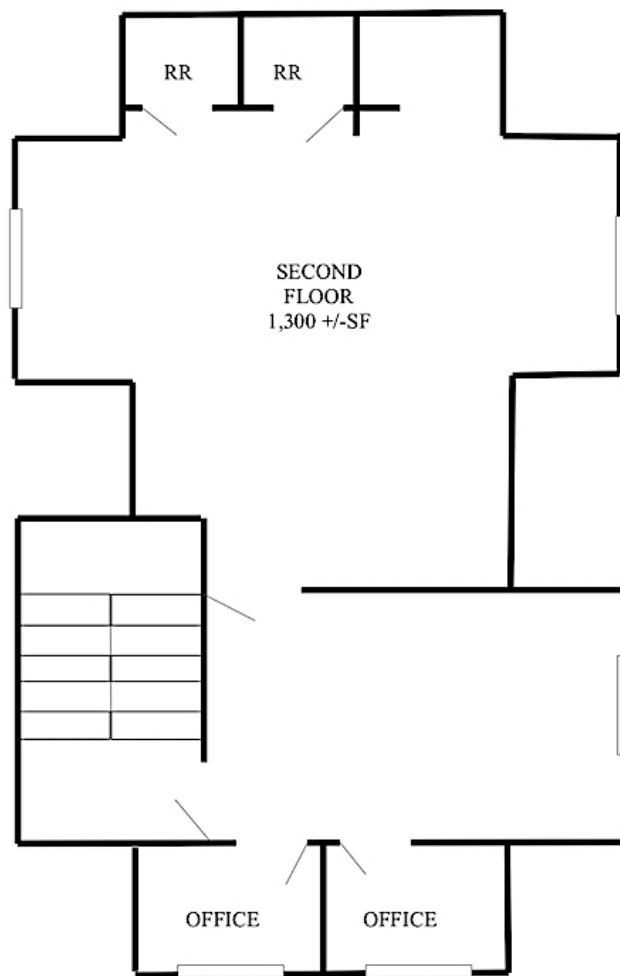
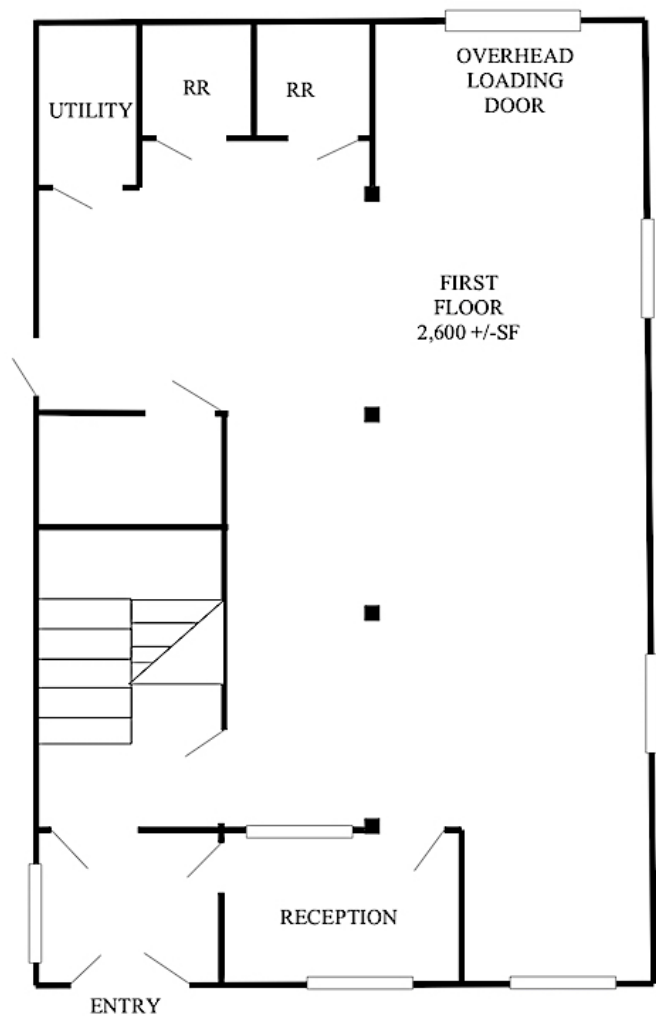
Edward@CarboneRE.com

CarboneRE.com

**CARBONE Commercial Real Estate, Inc.**

All information furnished is from sources deemed reliable, but no warranty or representation is made as to the accuracy thereof, and the same is presented subject to errors, omissions, change of price, rental or other conditions, prior sale or lease, or withdrawal without notice. Copyright © 2025 Carbone Commercial Real Estate, Inc., agent of the Owner/Lessor.

# 520 MAIN STREET, WILMINGTON, MA



Plan not drawn to scale. Plan not exact.



781.935.5444  
CarboneRE.com

CARBONE Commercial Real Estate, Inc.



## 520 MAIN STREET, WILMINGTON, MA - 1<sup>st</sup> FLOOR

CLICK IMAGE TO VIEW VIDEO TOUR



781.935.5444  
CarboneRE.com

CARBONE Commercial Real Estate, Inc.



## 520 MAIN STREET, WILMINGTON, MA - 2<sup>nd</sup> FLOOR



781.935.5444  
CarboneRE.com

CARBONE Commercial Real Estate, Inc.