



INDUSTRIAL
FLEX



BUILDING & WINDOW
SIGNAGE



3,105 SF



SINGLE
TENANT

OLIVE AVENUE BUSINESS PARK

9299 W OLIVE AVE | SUITE 306 | PEORIA, AZ 85345

Phill Tomlinson
D 480.522.2800
M 480.330.8897
ptomlinson@cpi.az.com

Eric Butler
D 480.522.2813
M 602.809.6570
ebutler@cpi.az.com



COMMERCIAL PROPERTIES INC.

Locally Owned. Globally Connected. CRIFAC International

TEMPE: 2323 W. University Drive, Tempe, AZ 85281 | 480.966.2301
SCOTTSDALE: 8777 N. Gainey Center Dr., Suite 245, Scottsdale, AZ 85258 | www.cpi.az.com

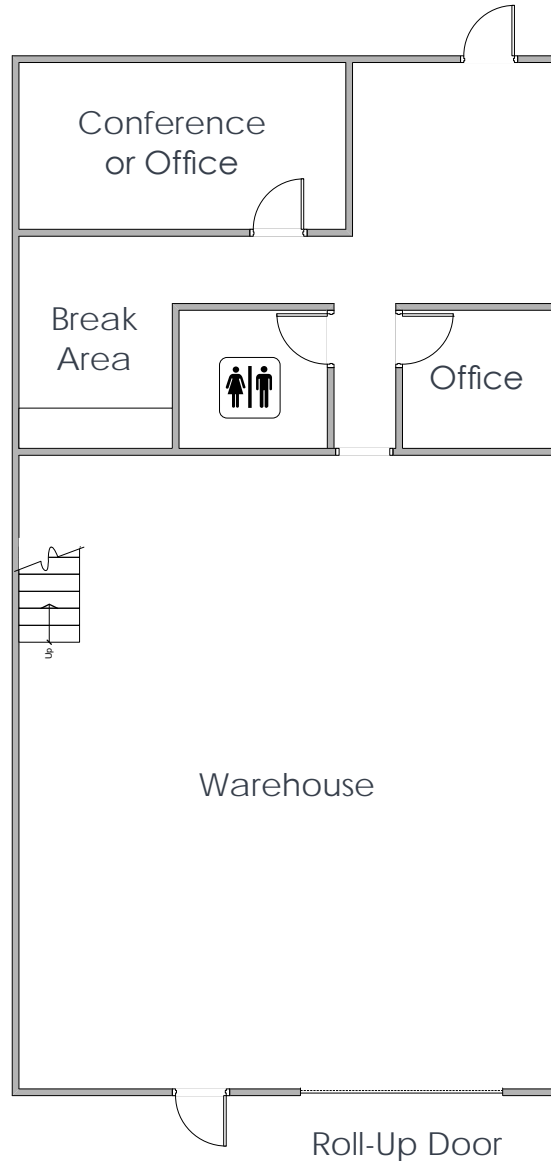
Available For Lease

Address	9299 W Olive Ave Suite 306 Peoria, AZ 85345
Suite Size	±3,105 SF
Year Built	2006
Zoning	BPI, City of Peoria
Frontage	Loop 101
Build Out	Industrial Flex
Parking	2.5/1,000 RSF
Clear Height	22'
Power	277/480 V 200 A 3 Ph

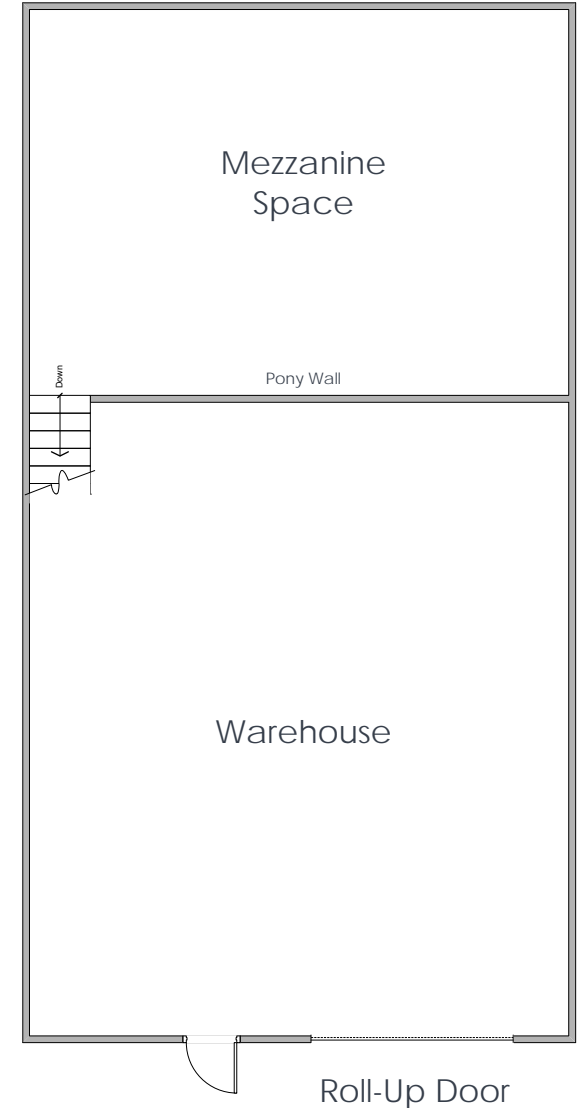
Lease Rate: \$16.00 NNN

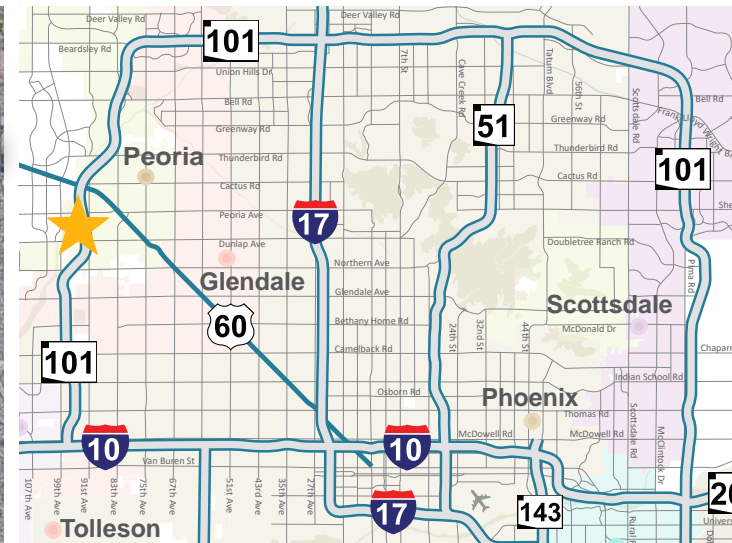
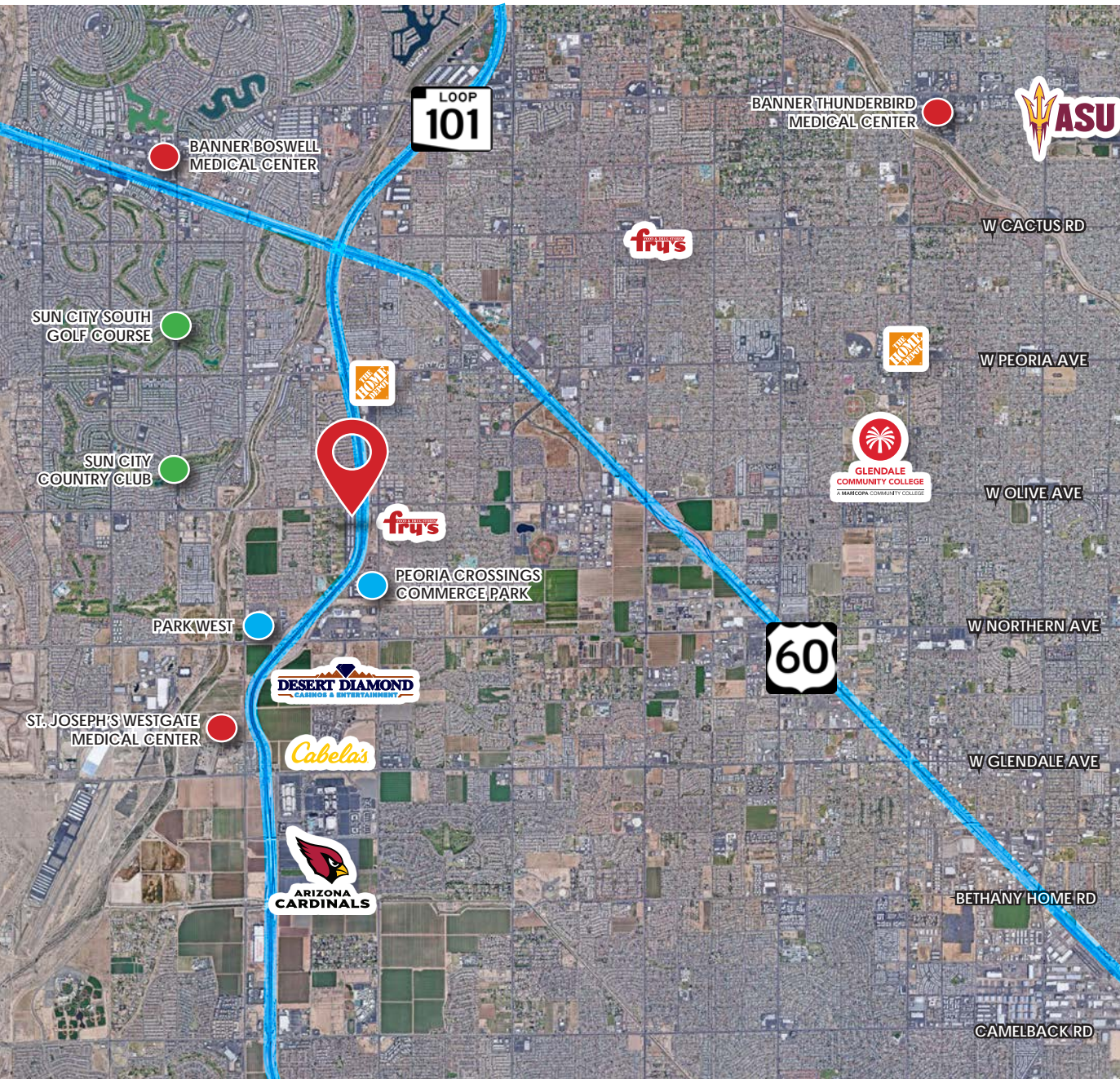


First Floor



Second Floor





DEMOGRAPHICS

3 miles

Population
98,694

Households
38,008

Median Household Income
\$54,004

Median Age
39.8

Total Businesses
2,083

Total Employees
28,280

Bachelor's/Grad/Prof Degree
21%

Interior Photos





W Olive Ave

SITE

