 **JLL** SEE A BRIGHTER WAY

FOR SUBLEASE

2423 E 23rd Street
Los Angeles, CA

**HIGH IMAGE, CORPORATE OFFICE
SPACE - CONSTRUCTED IN 2005**

Excellent Leasing Opportunity - 72,000 SF

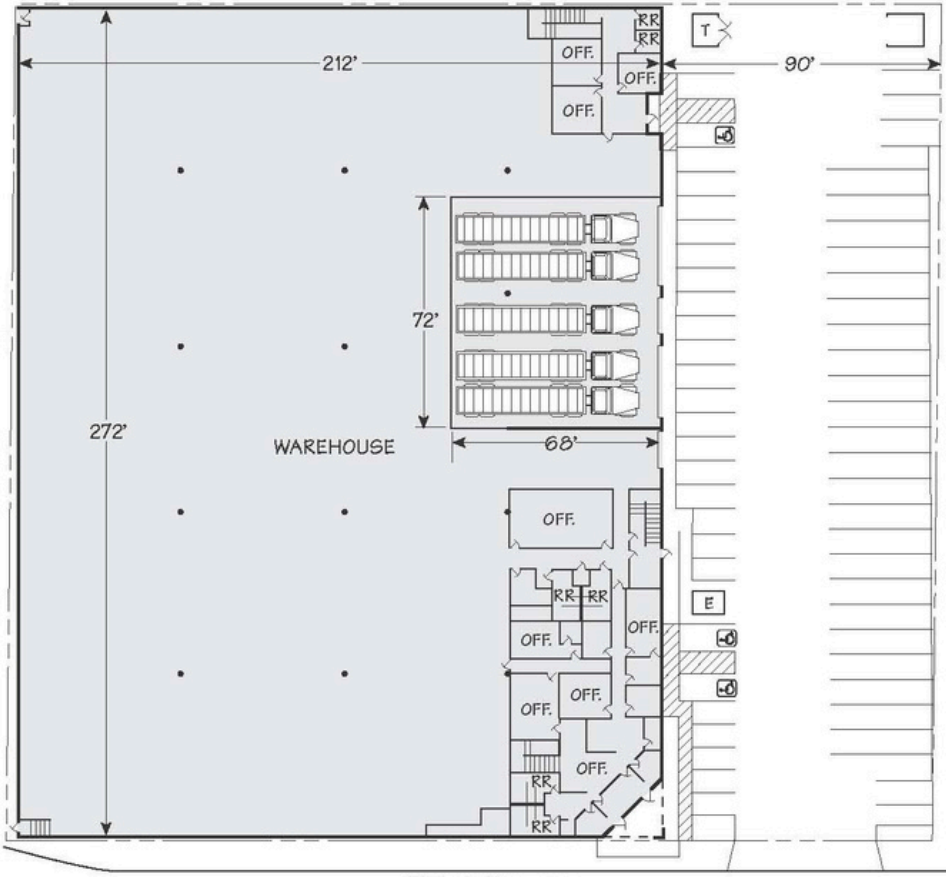
- Freestanding industrial facility
- 13,550 s.f. mezzanine office space
- 5,000 s.f. ground level office (2 sections)
- 30' ceiling clearance
- Five (5) dock high loading doors
- Two (2) ground loading doors
- 800 Amps, 227/480, 3 Phase, 4 Wire
- 66 parking spaces
- Fully fenced and secured yard

**Contact broker for
additional information**

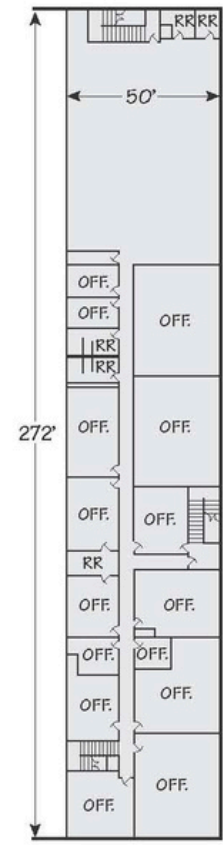
Paul Sablock
Senior Managing Director
+1 213 239 6230
Paul.Sablock@jll.com
CA License # 00783445

Nick Sablock
Associate
+1 213 239 6220
Nick.sablock@jll.com
CA License # 021272728

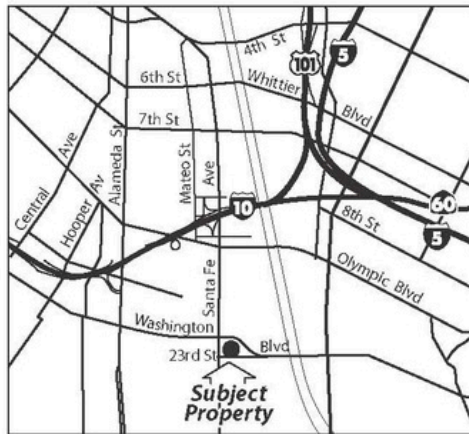
2423 23rd Street, Los Angeles, California



23rd Street



2nd Floor
Mezzanine



Contact broker for
additional information

Paul Sablock
Senior Managing Director
+1 213 239 6230
Paul.Sablock@jll.com
CA License # 00783445

Nick Sablock
Associate
+1 213 2396220
Nick.sablock@jll.com
CA License # 021272728