



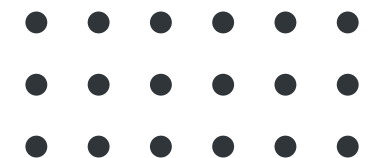
# MEDICAL OFFICE

NewTown  
LIFE HAPPENS HERE

LEASE



5408 Discovery Park Blvd  
Williamsburg, VA 23188





# PROPERTY OVERVIEW

Rare opportunity for a turn key medical office in a prestigious New Town Williamsburg Class A facility.

Currently occupied by an oral surgery practice, the first floor suite is projected to be available mid 2025.

## HIGHLIGHTS

- 2897 rentable square feet
- Prestigious Class A setting
- Ideal location in desirable New Town
- Medical buildout and high end finishes
- 1st Floor
- Monument signage



New  Town  
LIFE HAPPENS HERE

  
**HAMNER**  
Development  
Company



## 5408 DISCOVERY PARK BLVD

- 2897 sf rentable
- Full medical buildout
- Upscale class A office building
- New Town offers central and ideal location
- Surrounded by restaurants and amenities
- Signage

**Rate: \$31.35 /s.f.**

**Net of Janitorial**

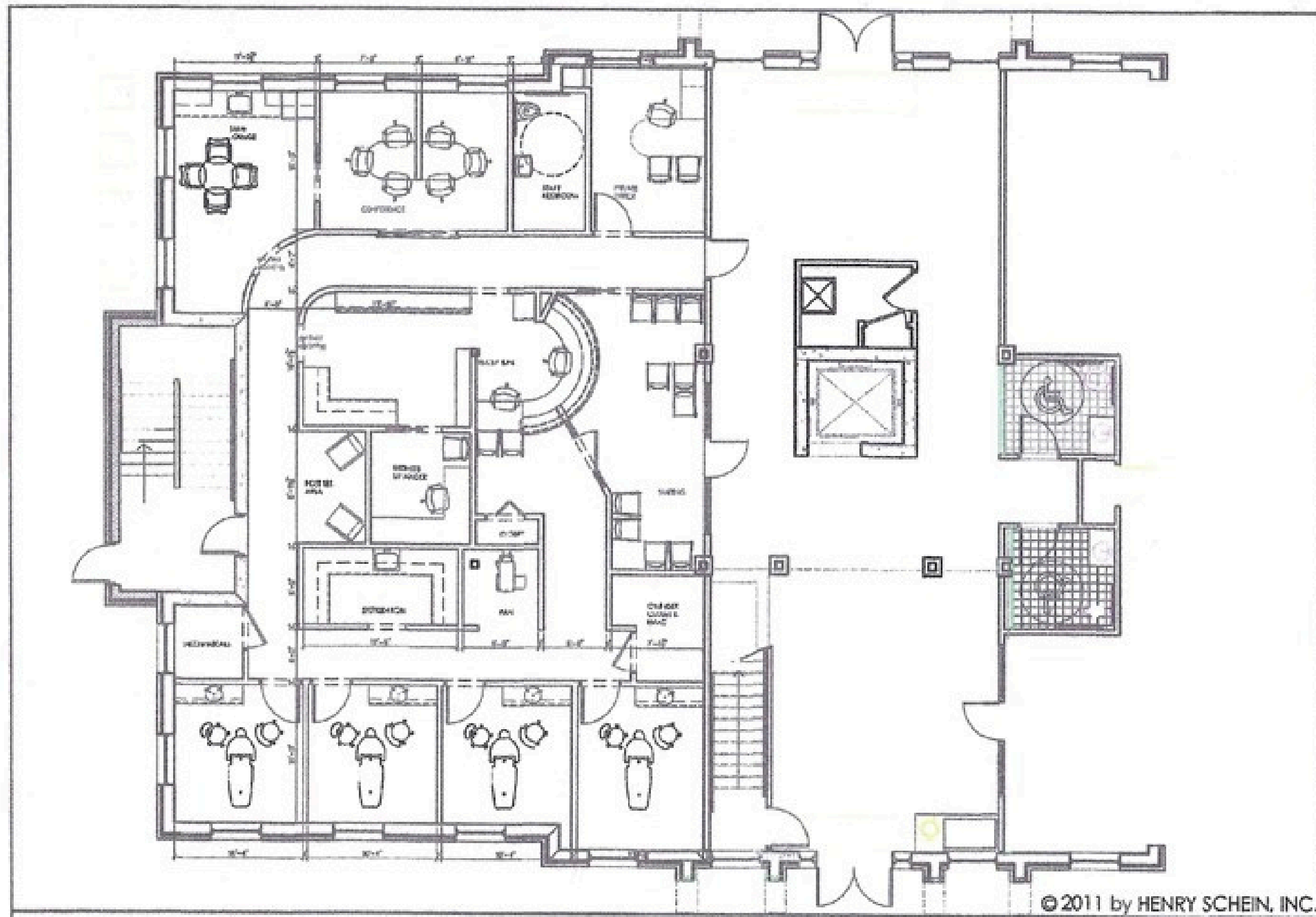


Brian Mello  
757-812-0829  
bmello@hamnerdevco.com



Alan Meetze  
757-871-3738  
ameetze@hamnerdevco.com





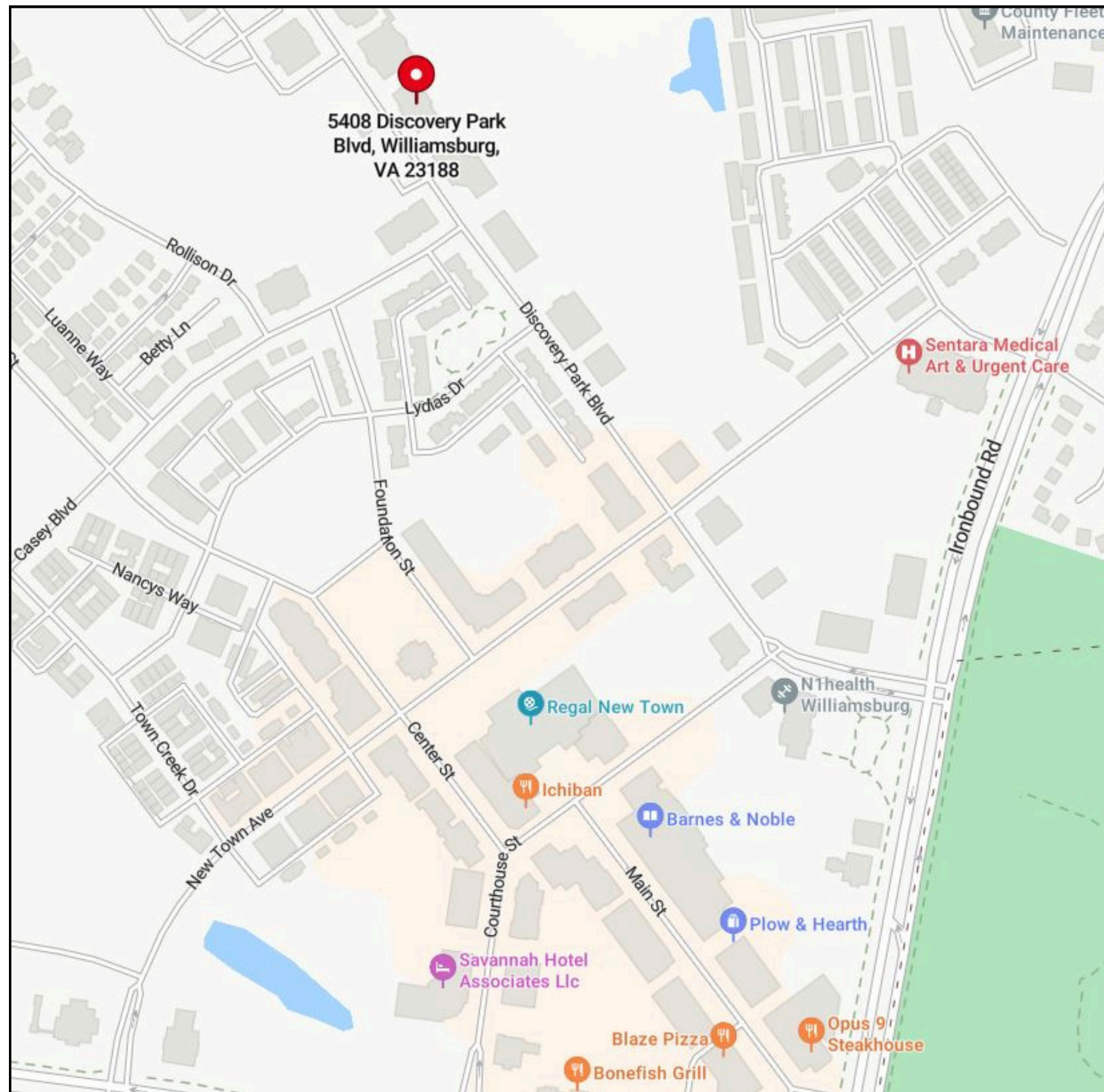
2897 s.f. rentable











With 365 acres of shops, offices and homes centrally located in Williamsburg, New Town is the preferred address for professional office use. New Town offers extensive amenities from dining to outdoor events.

**New Town**  
LIFE HAPPENS HERE





**Alan Meetze**  
**757-871-3738**  
**[ameetze@hamnerdevco.com](mailto:ameetze@hamnerdevco.com)**

**Brian Mello**  
**757-812-0829**  
**[bmello@hamnerdevco.com](mailto:bmello@hamnerdevco.com)**

All site visits must be arranged through agent

Disclosure: Hamner Development Company is the agent for the landlord and principals of Hamner are licensed real estate brokers who hold an ownership interest in the property.