

# OFFERING MEMORANDUM

**OFFERING PRICE: \$4,150,000**

**1149 - 1217 N. AZUSA CANYON ROAD**

WEST COVINA, CA 91790

## **5-BUILDING INDUSTRIAL COMPLEX**

- 3 Separate Parcels
- ±16,727 SF Building | ±46,295 SF Parcels
- SGI: \$160,860 | PPSF: \$248.00
- Investment or Owner/User Opportunity
- 3 Tenants Month-to-Month
- Call Listing Brokers for Details

PRESENTED BY

**DAVID WEINBERGER**

PRESIDENT

818.970.0915

David@SWGRP.com

**MEGAN HUSRI**

EXECUTIVE VICE PRESIDENT

310.775.7529

Megan@SWGRP.com



# TABLE OF CONTENTS

## SUBJECT PROPERTY

Executive Summary	4
Investment Highlights	6
Location Highlights	7
Photo Gallery	9
Financial Overview	13



---

SUBJECT  
PROPERTY

---



SWH

KW  
COMMERCIAL

# EXECUTIVE SUMMARY

**1149-1217 N. Azusa Canyon Road** offers a rare opportunity to acquire a multi-tenant industrial warehouse complex in the highly sought-after West Covina industrial corridor. The property consists of five industrial buildings totaling approximately 16,272 SF of rentable building area, currently leased to six tenants, providing both stable in-place income and rental upside. Three of the tenants are on month-to-month leases.

Constructed in 1962 and 1963, the buildings span three parcels totaling approximately 46,295 SF. The site is zoned WCM1YY, allowing for a wide range of industrial uses, including warehousing, distribution, fabrication, and light manufacturing, making the property highly functional and versatile for various businesses and operators.

The buildings feature wood-frame and stucco construction, a 12-foot clear height, and nine ground-level roll-up doors, supporting efficient loading and unloading. The buildings feature a fenced lot, ample parking spaces, and multiple drive-in doors (10'W x 10'H). The property also offers approximately 34 on-site parking spaces (2.0/1,000 SF), with frontage and easy ingress/egress along Azusa Canyon Road, which enhances overall usability and tenant appeal.

This asset is well-positioned for both Owner/Users seeking to occupy a portion or all of the site, and investors aiming to capitalize on solid industrial fundamentals within a supply-constrained market. With its strategic location, flexible configuration, and flexible tenancy, 1149-1217 N. Azusa Canyon Road is a compelling opportunity in one of Southern California's most resilient and dynamic industrial markets.

## TENANCY OVERVIEW:

- Six Tenants Occupying 16,727 SF
- 3 Tenants on Month-to-Month Leases
- Remaining 3 Tenants have 20-27 Months Remaining on Leases

## INVESTMENT HIGHLIGHTS

- ▶ Strong Freeway Access (10/210/605) Supports Distribution and Operations
- ▶ Established Industrial Area in the East San Gabriel Valley
- ▶ Smaller Warehouses Remain in Demand for User-Occupiers and Light Logistics
- ▶ Ideal for Light Manufacturing, Assembly, or Customization shops
- ▶ Suitable for Distribution/Fulfillment of Regional Goods
- ▶ Potential for Multi-Tenant Subdivision Depending on Configuration

# PARCEL OVERVIEW

## PARCEL #3 | APN: 8437-030-008

- YEAR BUILT: 1963
- BUILDINGS: 2
- BUILDING SIZE: 4,215 SF
- LOT SIZE: 13,694 SF

## PARCEL #2 | APN: 8437-030-002

- YEAR BUILT: 1962
- BUILDING: 1,600 SF
- LOT SIZE: 3,677 SF

## PARCEL #1 | APN: 8437-030-004

- YEAR BUILT: 1962
- BUILDINGS: 3
- BUILDING SIZE: 10,850 SF
- LOT SIZE: 28,924 SF

# BUILDING CHARACTERISTICS



5-Bldg Industrial Complex

PROPERTY TYPE



16,727 SF

TOTAL BUILDING AREA



46,721 SF

TOTAL LAND AREA



M-1 (manufacturing)

ZONING



34

PARKING SPACES



Wood Frame/Stucco

CONSTRUCTION



12 ft

CLEAR HEIGHT



9

ROLL-UP DOORS



1962/1963

YEARS BUILT



100% Occupied

LEASED



# LOCATION HIGHLIGHTS | WEST COVINA

*West Covina's central location, established industrial base, supportive economic environment, and accessibility to Southern California's freeway network make it an attractive choice for industrial real estate investment.*

*The prime West Covina industrial corridor has direct access to regional freeways and faces strong supply constraints (approx. 4.5% vacancy). The surroundings include industrial, automotive, rail, and residential uses.*

## PRIME LOCATION AND ACCESSIBILITY

- ▶ West Covina is strategically positioned in the San Gabriel Valley submarket with excellent access to the I-10, I-605, and SR-60 freeways. This connectivity enables efficient distribution to Los Angeles, Orange County, and Inland Empire markets.
- ▶ Proximity to Key Hubs: The city is approximately 25 miles from downtown Los Angeles and within 35 miles of the ports of Los Angeles and Long Beach. Ontario International Airport is less than 20 miles away, providing regional and international cargo capabilities.

## ROBUST INDUSTRIAL MARKET

- ▶ West Covina continues to see strong industrial demand, with vacancy rates among the lowest in Greater Los Angeles. Tenants seeking last-mile distribution and light manufacturing space remain active.
- ▶ Rental Rates: Asking rents for West Covina industrial properties typically range from \$15 to \$18 per square foot annually, positioning the city as a cost-effective alternative to infill Los Angeles while maintaining access to the same consumer and labor base.

# LOCATION HIGHLIGHTS | WEST COVINA

*West Covina's central location, established industrial base, supportive economic environment, and accessibility to Southern California's freeway network make it an attractive choice for industrial real estate investment.*

*The prime West Covina industrial corridor has direct access to regional freeways and faces strong supply constraints (approx. 4.5% vacancy).*

*The surroundings include industrial, automotive, rail, and residential uses.*

## ECONOMIC GROWTH AND DEVELOPMENT

- ▶ **Business-Friendly Environment:** West Covina supports industrial users through streamlined permitting processes, local business assistance, and a strong workforce pipeline. The city's location along major commuter routes enhances employee accessibility.
- ▶ **Demand Drivers:** Growth in e-commerce and logistics continues to drive interest in small to mid-bay warehouses like those along Azusa Canyon Road, which are well suited for distributors, contractors, and service-oriented industrial users.

## ESTABLISHED INFRASTRUCTURE AND FACILITIES

- ▶ West Covina's industrial inventory consists primarily of functional small- to mid-sized warehouses (5,000–50,000 SF), ideal for last-mile distribution and regional service operations.
- ▶ Renovations and repositioning of older properties, coupled with stable tenant demand, underscore confidence in the long-term viability of the city's industrial sector.

# PHOTO GALLERY | EXTERIOR



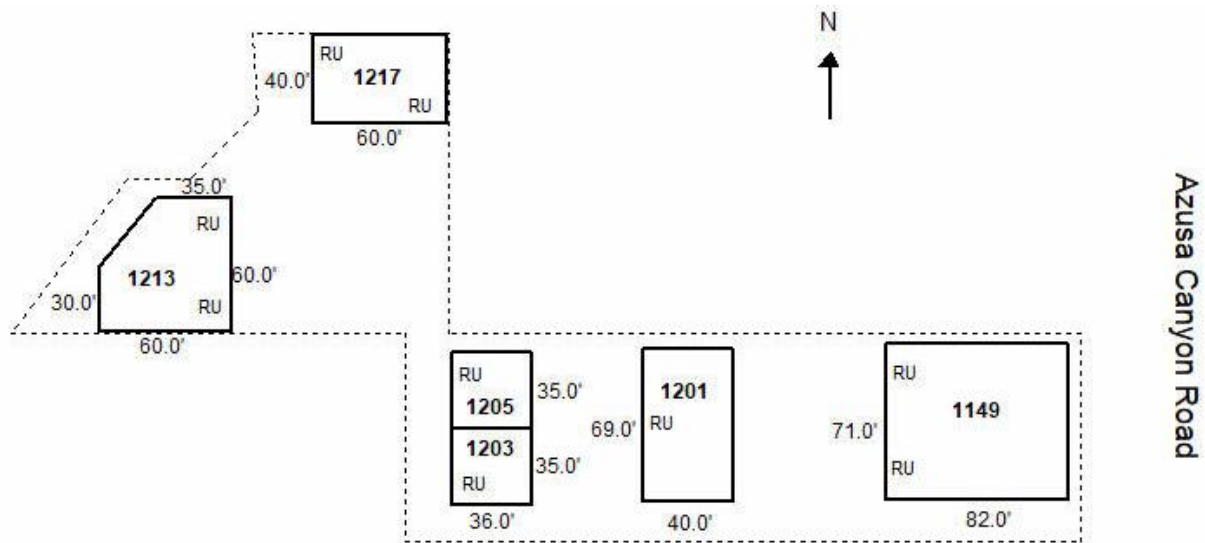
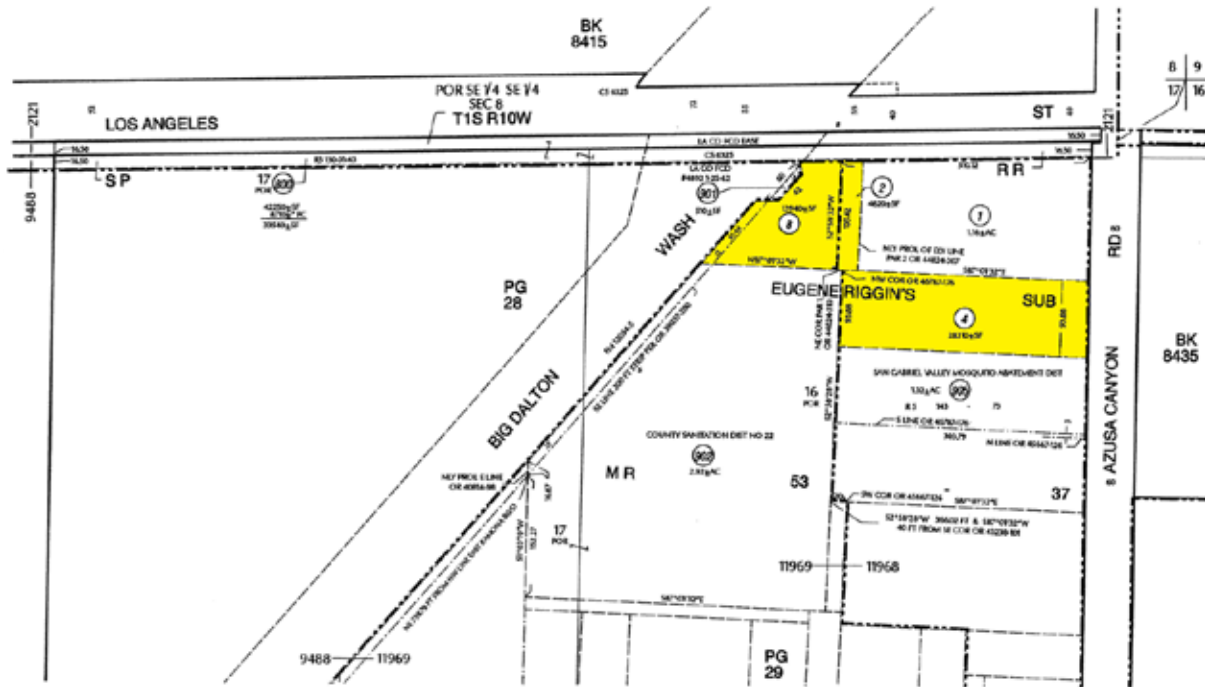
# PHOTO GALLERY | EXTERIOR



# PHOTO GALLERY | AERIALS



# PLAT MAP | SITE PLAN



# RECONSTRUCTED FINANCIAL OVERVIEW

ANNUAL INCOME	
RENTAL INCOME	\$160,860
PROPERTY TAXES (1.143688%)	\$47,463
INSURANCE (ESTIMATE)	\$7,961
LANDSCAPING	\$1,920
UTILITIES	\$20,681
TOTAL EST. OPERATING EXPENSES	\$78,025
NET INCOME	\$82,835
PRICE	\$4,150,000



# RENT ROLL

TENANT/UNIT NAME	SUITE	RENT	SF	RENT \$/SF	LEASE START	LEASE END	LEASE TYPE	NOTES
Godber & Hollett, LLC (dba Concorde/Interspace)	1149	\$5,507	5,822	\$0.95	10/1/2024	9/30/2026	MG	
CJ Read Engineering	1201	\$2,364	2,760	\$0.86	12/1/2022	11/30/2026	MG	FIXED INCREASES
Michael Baker	1203 - 1205	\$1,082	1,260	\$0.86	MTM	MTM	MG	
Portillo Daviegogo, LLC	1215	\$1,300	1,260	\$1.03	MTM	MTM	MG	
Phoenix Pumps of California, a California corporation	1213	\$1,832*	3,225	\$0.57	4/8/2022	3/31/2027	MG	1 OPTION @ 5 YRS
Early V-8	1217	\$1,320	2,400	\$0.55	MTM	MTM	MG	
<b>TOTAL</b>		<b>\$13,405</b>	<b>16,727</b>					

\* Reflects a scheduled rental increase for Phoenix Pumps of California effective April 1, 2026.

# DEMOGRAPHICS | WEST COVINA

POPULATION (1 MILE)	AVG HOUSEHOLD SIZE (1 MILE)	AVERAGE AGE (1 MILE)	MEDIAN HOUSEHOLD INCOME (1 MILE)
21,282	3.3	40	\$92,709



POPULATION	1 MILE	3 MILE	5 MILE
2024 Population	21,282	227,693	476,622
2029 Population	20,444	218,890	458,273
Pop Growth 2024-2029	(3.9%)	(3.9%)	(3.9%)
2024 Average Age	40	39	39

HOUSEHOLDS	1 MILE	3 MILE	5 MILE
2024 Households	6,154	60,529	129,282
2029 Households	5,895	58,028	123,972
Household Growth 2024-2029	(4.2%)	(4.1%)	(4.1%)
Median Household Income	\$92,709	\$84,410	\$81,553
Average Household Size	3.3	3.6	3.5
Average HH Vehicles	3	3	2

HOUSING	1 MILE	3 MILE	5 MILE
Median Home Value	\$713,682	\$656,282	\$665,162
Median Year Built	1957	1958	1959

# DISCLAIMER

All materials and information received or derived from KW, its directors, officers, agents, advisors, affiliates and/or any third party sources are provided without representation or warranty as to completeness, veracity, or accuracy, condition of the property, compliance or lack of compliance with applicable governmental requirements, developability or suitability, financial performance of the property, projected financial performance of the property for any party's intended use or any and all other matters. Neither KW, its directors, officers, agents, advisors, or affiliates makes any representation or warranty, express or implied, as to accuracy or completeness of the any materials or information provided, derived, or received. Materials and information from any source, whether written or verbal, that may be furnished for review are not a substitute for a party's active conduct of its own due diligence to determine these and other matters of significance to such party. KW will not investigate or verify any such matters or conduct due diligence for a party unless otherwise agreed in writing.

## EACH PARTY SHALL CONDUCT ITS OWN INDEPENDENT INVESTIGATION AND DUE DILIGENCE

Any party contemplating or under contract or in escrow for a transaction is urged to verify all information and to conduct their own inspections and investigations including through appropriate third party independent professionals selected by such party. All financial data should be verified by the party including by obtaining and reading applicable documents and reports and consulting appropriate independent professionals. KW makes no warranties and/or representations regarding the veracity, completeness, or relevance of any financial data or assumptions. KW does not serve as a financial advisor to any party regarding any proposed transaction. All data and assumptions regarding financial performance, including that used for financial modeling purposes, may differ from actual data or performance. Any estimates of market rents and/or projected rents that may be provided to a party do not necessarily mean that rents can be established at or increased to that level. Parties must evaluate any applicable contractual and governmental limitations as well as market conditions, vacancy factors and other issues in order to determine rents from or for the property. Legal questions should be discussed by the party with an attorney. Tax questions should be discussed by the party with a certified public accountant or tax attorney. Title questions should be discussed by the party with a title officer or attorney. Questions regarding the condition of the property and whether the property complies with applicable governmental requirements should be discussed by the party with appropriate engineers, architects, contractors, other consultants and governmental agencies. All properties and services are marketed by KW in compliance with all applicable fair housing and equal opportunity laws. We obtained the information above from sources we believe to be reliable. However, we have not verified its accuracy and make no guarantee, warranty or representation about it. It is submitted subject to the possibility of errors, omissions, change of price, rental or other conditions, prior sale, lease or financing, or withdrawal without notice. We include projections, opinions, assumptions or estimates for example only, and they may not represent current or future performance of the property. You and your tax and legal advisors should conduct your own investigation of the property and transaction.

FOR MORE INFORMATION,  
PLEASE CONTACT

**DAVID WEINBERGER**

PRESIDENT

818.970.0915

David@SWGRP.com

**MEGAN HUSRI**

EXECUTIVE VICE PRESIDENT

310.775.7529

Megan@SWGRP.com

