



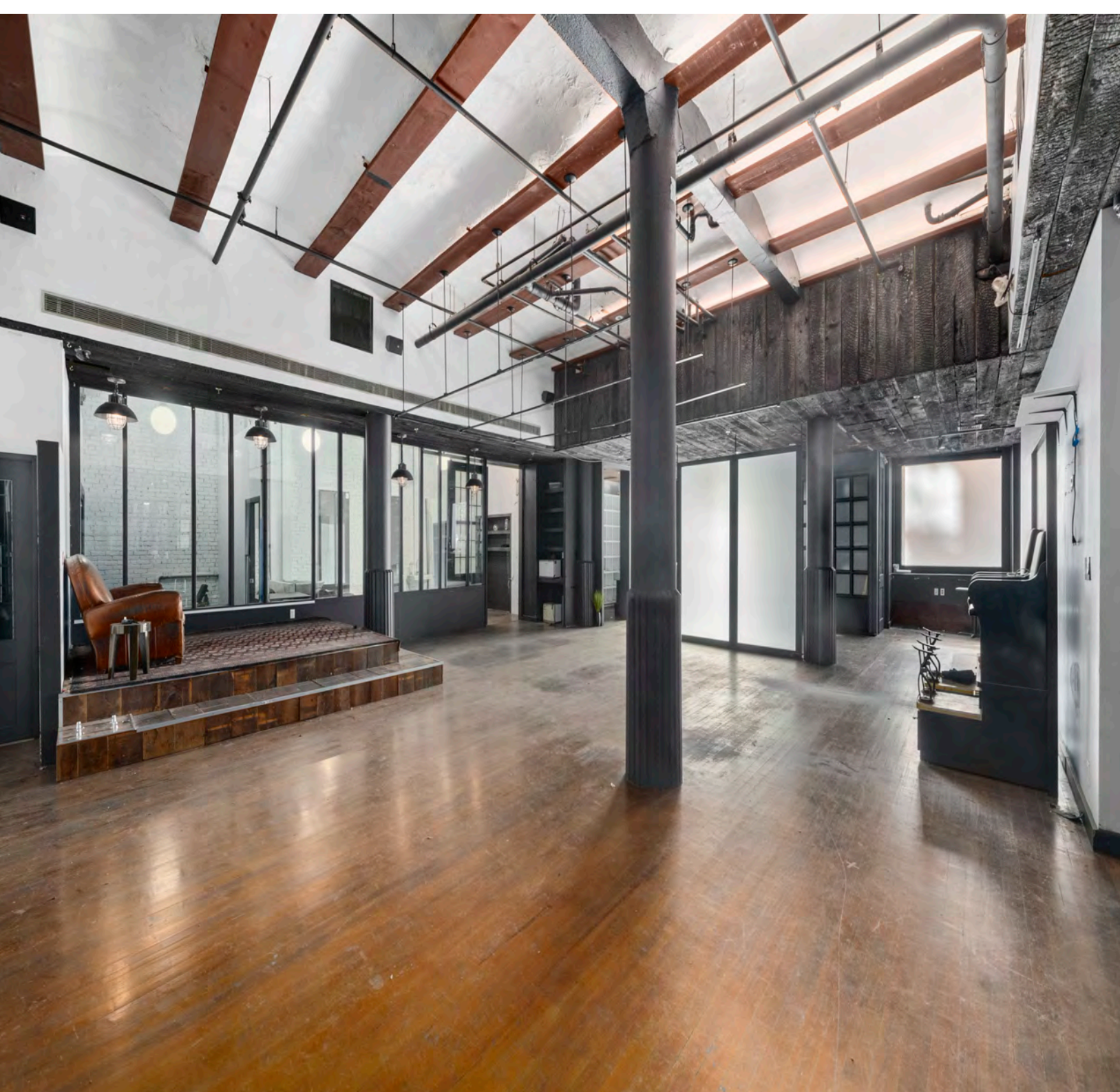
THE
MICHAEL
LORBER
TEAM

AT DOUGLAS ELLIMAN
REAL ESTATE

 Douglas Elliman
Commercial

62 Laight Street
Tribeca



**FLOOR / AREA**

Ground / 3,100sf (Approx.)

ASKING RENT

Price Upon Request

FEATURING

- Ceiling Heights: 18ft (Approx.)
- Frontage: 40ft+ (Approx.)
- Available for direct lease
- Possession Immediate
- All uses considered, use Group 6

COMMENTS:

- Previously The John Allan Club/Salon
- Outdoor seating on Laight Street
- Potential awnings for additional signage
- Long and short term lease considered

CONTACT

Hillel Horovitz
Lic. Assoc. R.E. Broker
O: 212.352.5247
M: 917.848.7486
hillel.horovitz@elliman.com



575 MADISON AVENUE, NY, NY 10022, 212.891.7000 © 2020 DOUGLAS ELLIMAN REAL ESTATE. ALL MATERIAL PRESENTED HEREIN IS INTENDED FOR INFORMATION PURPOSES ONLY. WHILE THIS INFORMATION IS BELIEVED TO BE CORRECT, IT IS REPRESENTED SUBJECT TO ERRORS, OMISSIONS, CHANGES OR WITHDRAWAL WITHOUT NOTICE. ALL PROPERTY INFORMATION, INCLUDING BUT NOT LIMITED TO SQUARE FOOTAGE, ROOM COUNT, NUMBER OF BEDROOMS AND THE SCHOOL DISTRICT IN PROPERTY LISTINGS SHOULD BE VERIFIED BY YOUR OWN ATTORNEY, ARCHITECT OR ZONING EXPERT. EQUAL HOUSING OPPORTUNITY. 🏠