



# FLEX SPACE AVAILABLE FOR LEASE

11279 SOUTH REDWOOD ROAD, SOUTH JORDAN, UT 84095

**LEASE RATE: ~~\$1.35~~ PSF NNN  
REDUCED TO \$1.20 PSF NNN**



## PROPERTY INFORMATION

- ✓ Total Lot Size: 0.81 Acres
- ✓ 18' Clear Height
- ✓ Power: 225 Amp/240V/3-Phase
- ✓ Ample Parking
- ✓ Private Bathrooms
- ✓ A/C And Heat
- ✓ Zoning: MU-SO
- ✓ Fire Suppression
- ✓ Both Units Can Be Combined As One Unit Or Leased Separately

## AVAILABLE SPACE

- ✓ **Unit B: 4,300 SF**
- ✓ Lease Rate: \$1.20 PSF NNN \$0.26
  - Warehouse: 3,900 SF
  - Office: 400 SF W/ New Flooring
- ✓ Two (2) 12'x14' Ground Level Doors
  
- ✓ **Unit A: 4,700 SF**
- ✓ Lease Rate: \$1.20 PSF NNN \$0.26
  - Warehouse: 3,800 SF
  - Stacked Floor Office: 900 SF W/ New Flooring
- ✓ One (1) 12'x14' Ground Level Door

## CONTACT US

**CHRIS LORENZON**

✉ [chris@cresutah.com](mailto:chris@cresutah.com)

☎ 801.652.2798

🌐 [www.cresutah.com](http://www.cresutah.com)

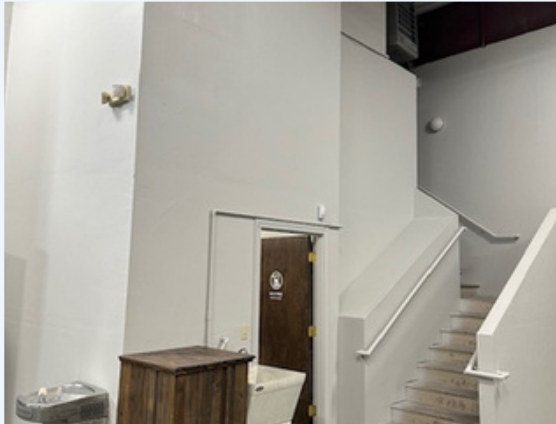
Call Us  
**801.876.6070**





# FLEX SPACE AVAILABLE FOR LEASE

11279 SOUTH REDWOOD ROAD, SOUTH JORDAN, UT 84095



This information is given with the understanding that all negotiations and/or real estate activity related to the property described above shall be conducted through this CRES office. The above information while not guaranteed, was obtained from sources we believe to be reliable.

**CONTACT US**

Call Us

**801.876.6070**

**CHRIS LORENZON**

[chris@cresutah.com](mailto:chris@cresutah.com)



801.652.2798



[www.cresutah.com](http://www.cresutah.com)