

**19,645 SF**  
(3,079 SF OF OFFICE)

**DIVISIBLE TO:**  
**10,708 SF (1,974 SF OFFICE)**  
**8,937 SF (1,105 SF OFFICE)**



# LANDING CENTER, BLDG A

22431 - 22435 68<sup>TH</sup> AVE S | KENT, WA

**BRIAN BRUININKS, CCIM**  
(206) 856-6249  
bbruininks@andoverco.com

**SHANE MAHVI**  
(858) 442-0441  
smahvi@andoverco.com

 **THE ANDOVER  
COMPANY, INC.**  
CORFAC INTERNATIONAL

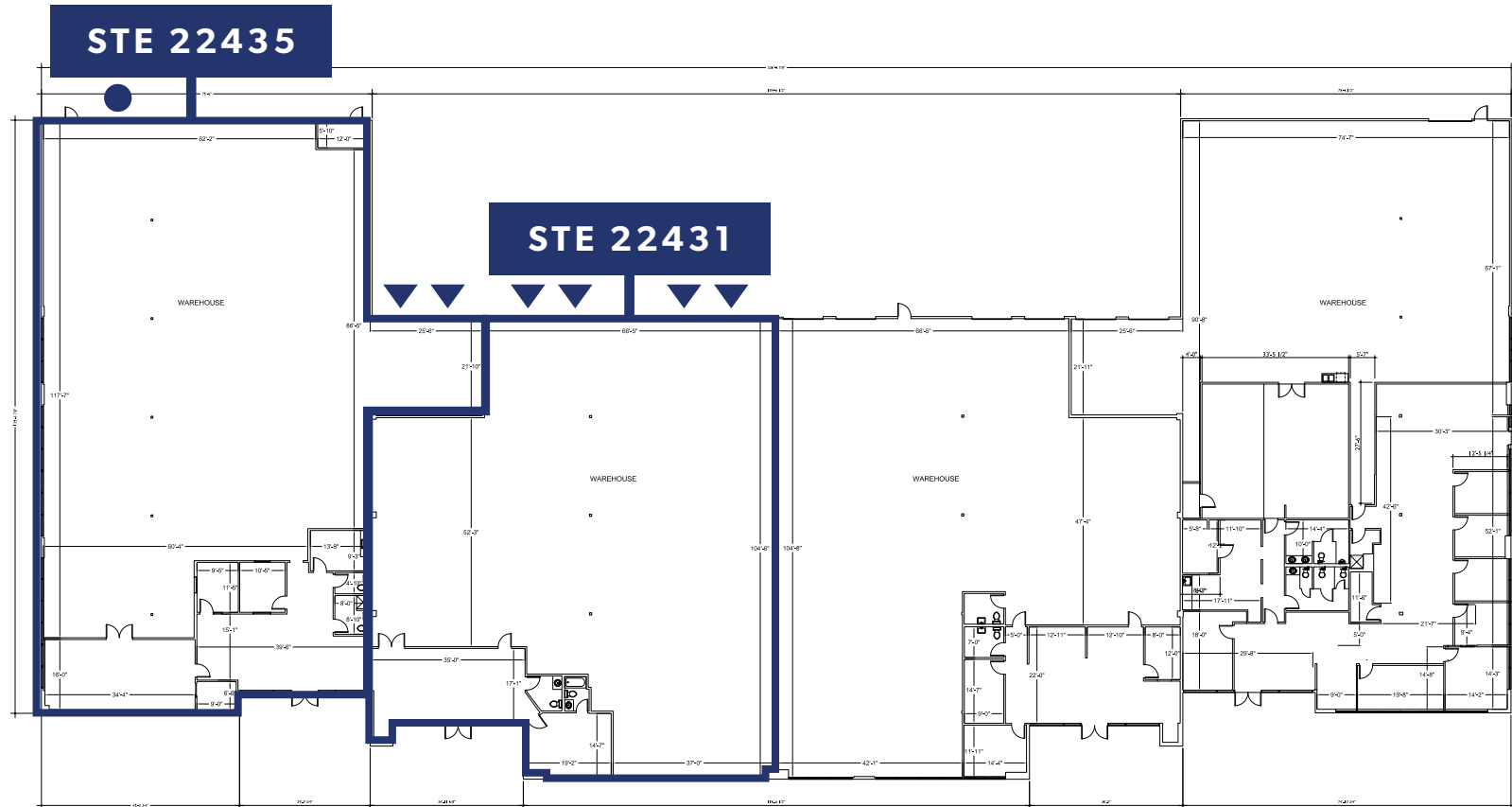
# VACANCIES

## ALL SPACES AVAILABLE NOW

BUILDING	SF AVAILABLE WAREHOUSE OFFICE	DATE AVAILABLE	LOADING CEILING HEIGHT	ASKING RATE (+ NNN'S)	ADDITIONAL INFO
<b>A Ste 22431</b>	8,937 SF (1,105 SF office)	10/01/2025	4 DH 22'	Call brokers for rates	Class A north endcap space located on West Valley Highway. This space has great parking, visibility to West Valley Highway. Mostly open showroom/office. Please call Brokers to arrange tours.
<b>A Ste 22435</b>	10,708 SF (1,974 SF office)	10/01/2025	2 DH 1 GL 18' - 22'	Call brokers for rates	Class A north endcap space located on West Valley Highway. This space has great parking, visibility to West Valley Highway. Mostly open showroom/office. Please call Brokers to arrange tours.
<b>A Ste 22431 + Ste 22435</b>	19,645 SF (3,079 SF office)	10/01/2025	6 DH 1 GL 18' - 22'	Call brokers for rates	Class A north endcap space located on West Valley Highway. This space has great parking, visibility to West Valley Highway. Combined suites. End cap space with two entries, showroom/office space. Please call Brokers to arrange tours.



# FLOOR PLAN



▲ Dock high door

● Drive-in door

The information contained herein has been obtained from reliable sources, but is not guaranteed. A prospective buyer/tenant should verify each item relating to this property and all information contained herein.

# LOCATION MAP



**BRIAN BRUININKS, CCIM**  
(206) 856-6249  
bbruininks@andoverco.com

**SHANE MAHVI**  
(858) 442-0441  
smahvi@andoverco.com

 **THE ANDOVER  
COMPANY, INC.**  
CORFAC INTERNATIONAL