

FOR SUBLEASE

HISTORIC DOWNTOWN VANCOUVER OFFICE BUILDING

916 Main Street | Vancouver, WA 98660



900 Washington St, Suite 850, Vancouver, WA
360.750.5595 | www.fg-cre.com

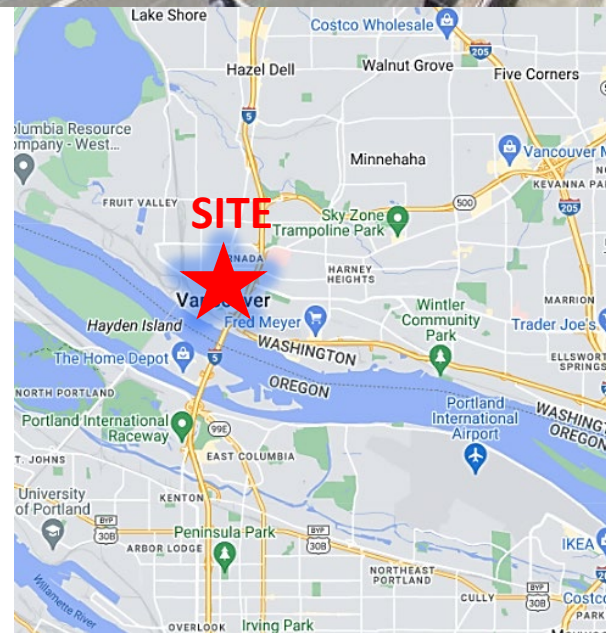


PROPERTY HIGHLIGHTS

Creative office space in this historic building in the heart of downtown Vancouver. Surrounded by shops and dining options, and minutes to the Waterfront.

Available:

- Suite 100 – 3,851 RSF
- First floor space built out with a mix of private offices, reception area, and open work area
- \$22.00/SF Modified Gross (excludes janitorial and utilities)
- On-site parking available at \$65/stall (up to 7 stalls)
- Plug and play office space ready for new tenant
- Sublease term expires 9/30/28



FOR MORE INFORMATION:

Doug Bartocci, CCIM
360.597.0575 | dbartocci@fg-cre.com

Adam Roselli, CCIM, SIOR
360.597.0568 | aroselli@fg-cre.com

FOR SUBLEASE

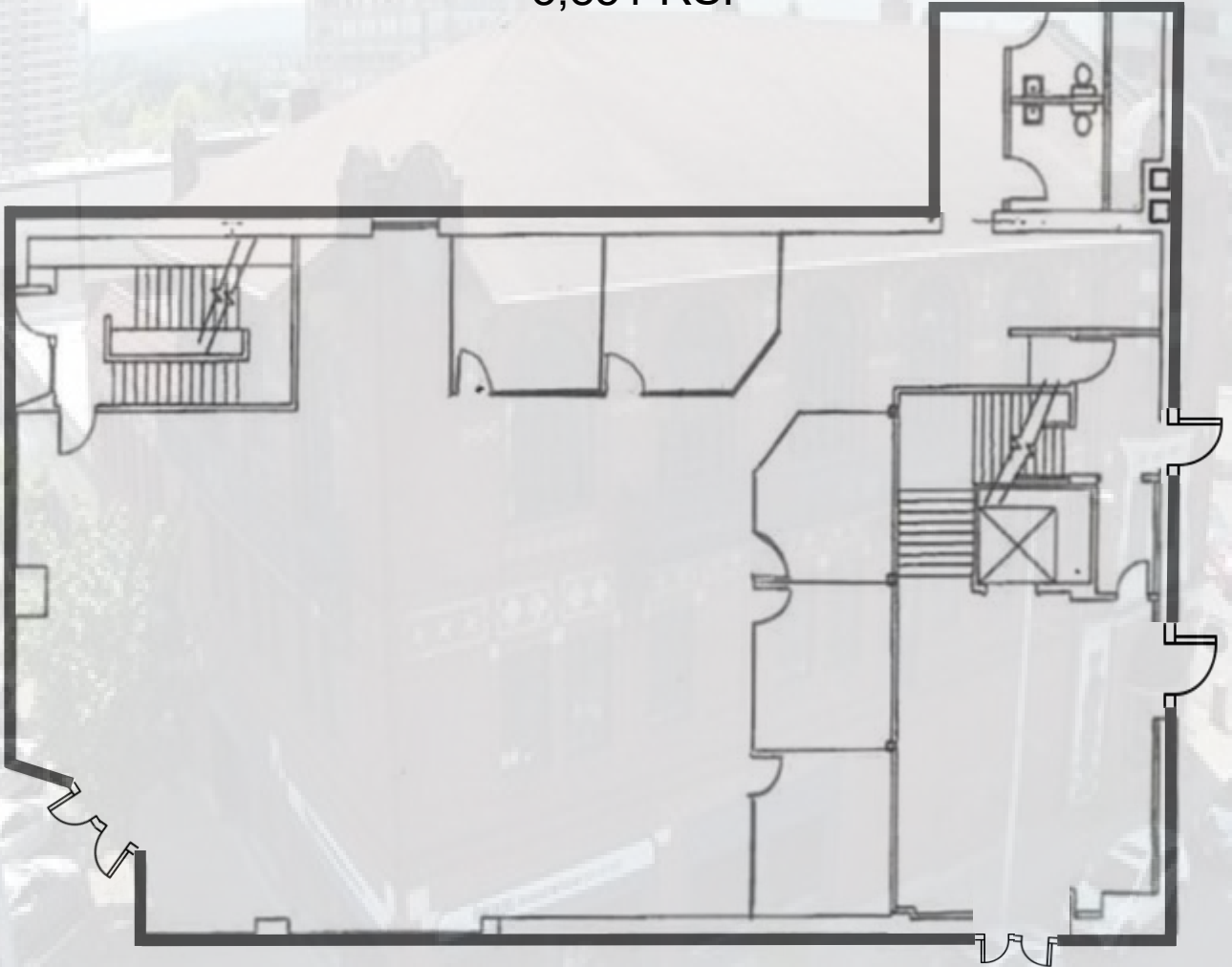
HISTORIC DOWNTOWN VANCOUVER OFFICE
BUILDING

916 Main Street | Vancouver, WA 98660



900 Washington St, Suite 850, Vancouver, WA
360.750.5595 | www.fg-cre.com

Suite 100
3,851 RSF



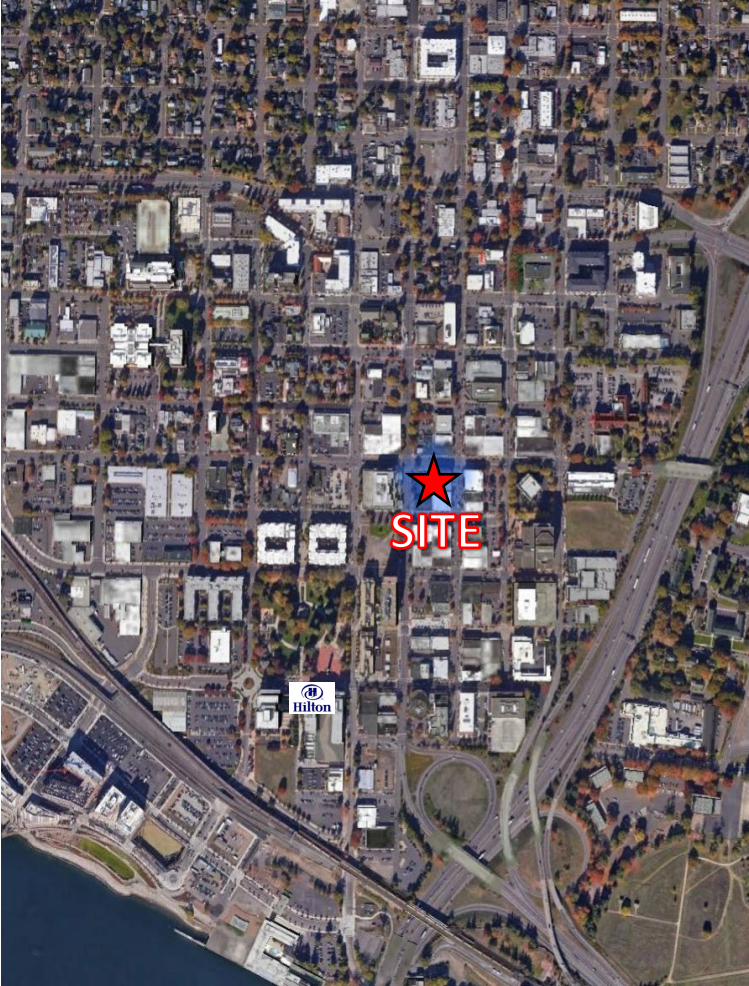
FOR SUBLEASE

HISTORIC DOWNTOWN VANCOUVER OFFICE BUILDING

916 Main Street | Vancouver, WA 98660



900 Washington St, Suite 850, Vancouver, WA
360.750.5595 | www.fg-cre.com



This statement with the information it contains is given with the understanding that all the negotiations relating to the purchase, rental or leasing of the property described above shall be conducted through this office. The above information, while not guaranteed, has been secured from sources we believe to be reliable.