

FOR LEASE

130 10th St.

San Francisco, CA 94118

Hans Hansson
415.517.2589

Craig Hansson
415.710.7768

[View Online](#)



STARBOARD CRE
LOCAL • INDEPENDENT • ENTREPRENEURIAL

STARBOARDCRE.COM
OFC. PHONE 415.765.6900
49 POWELL STREET, SAN FRANCISCO, CA 94102

130 10TH STREET

Square Ft.	± 4,650 SF
Space Type	Flex
Lease Term	Flexible
Lease Rate	Negotiable

HIGHLIGHTS

Ground Floor

- Open Plan Space
- Two New ADA Bathrooms
- Kitchen Crea
- With Freight Elevator to Basement Space
- Side Entrance for Deliveries
- Creative Potential

Lower Level

- Open plan with two offices and two large meeting rooms







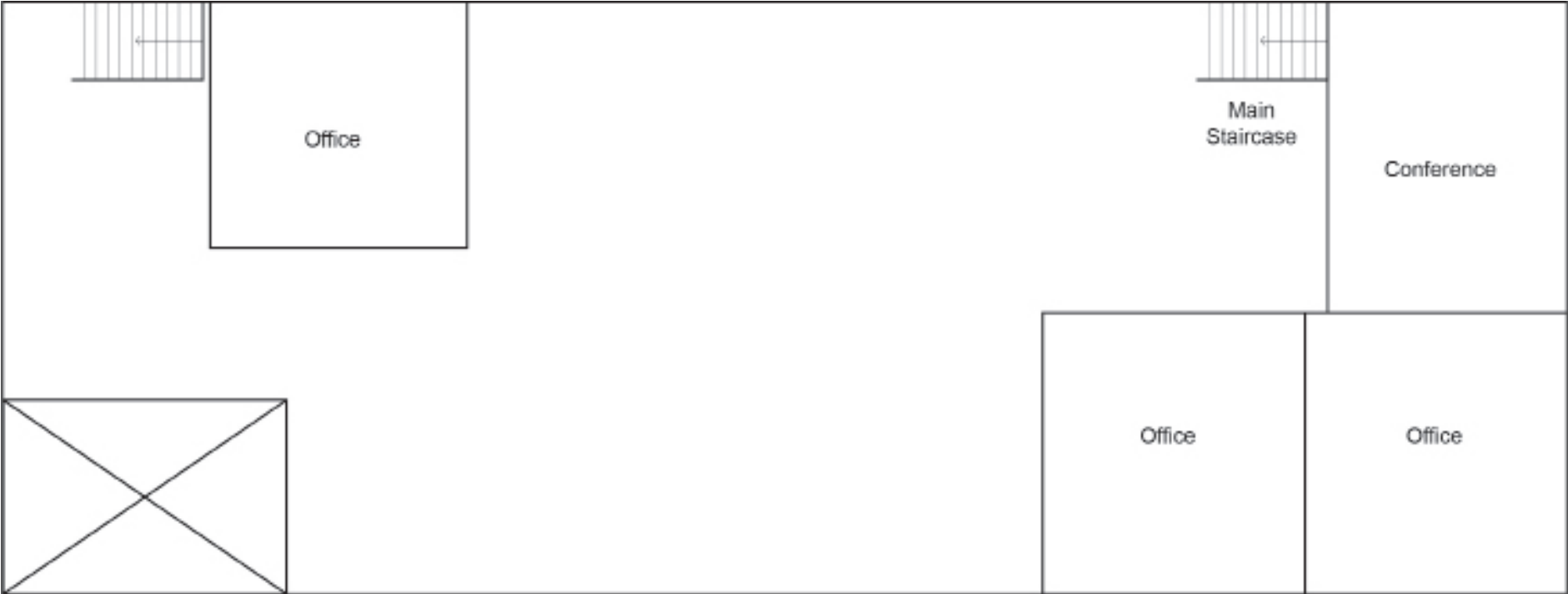
GROUND FLOOR – FLOOR PLAN

FOR LEASE



BASEMENT – FLOOR PLAN

FOR LEASE





Hans Hansson

President / Broker of Record
hans@starboardcre.com
CELL: 415.517.2589
OFC. PHONE: 415.765.6900
BRE # 00872902

[View Online](#)



Craig Hansson

Vice President
craig@starboardcre.com
CELL: 415.710.7768
OFC. PHONE: 415.765.6900
BRE # 01841643

[View Online](#)





STARBOARD CRE
LOCAL • INDEPENDENT • ENTREPRENEURIAL

STARBOARDCRE.COM

OFC. PHONE 415.765.6900

49 POWELL STREET, SAN FRANCISCO, CA 94102



The largest,
independently -owned
commercial real estate
firm in San Francisco.

Unique Vision

We see what others miss

Local Market Leader

No one knows Northern
California like we do

Full Service Firm

We do it all

Locally based, technology forward, our brokers are highly qualified experts backed by a full-service, in-house support team who understand the intricacies of San Francisco real estate. Starboard CRE brings decades of brokerage experience representing over 600 million square feet of space with an aggregate lease value of over 10 billion and investments sold over 3 billion.

DRE# 01103056

