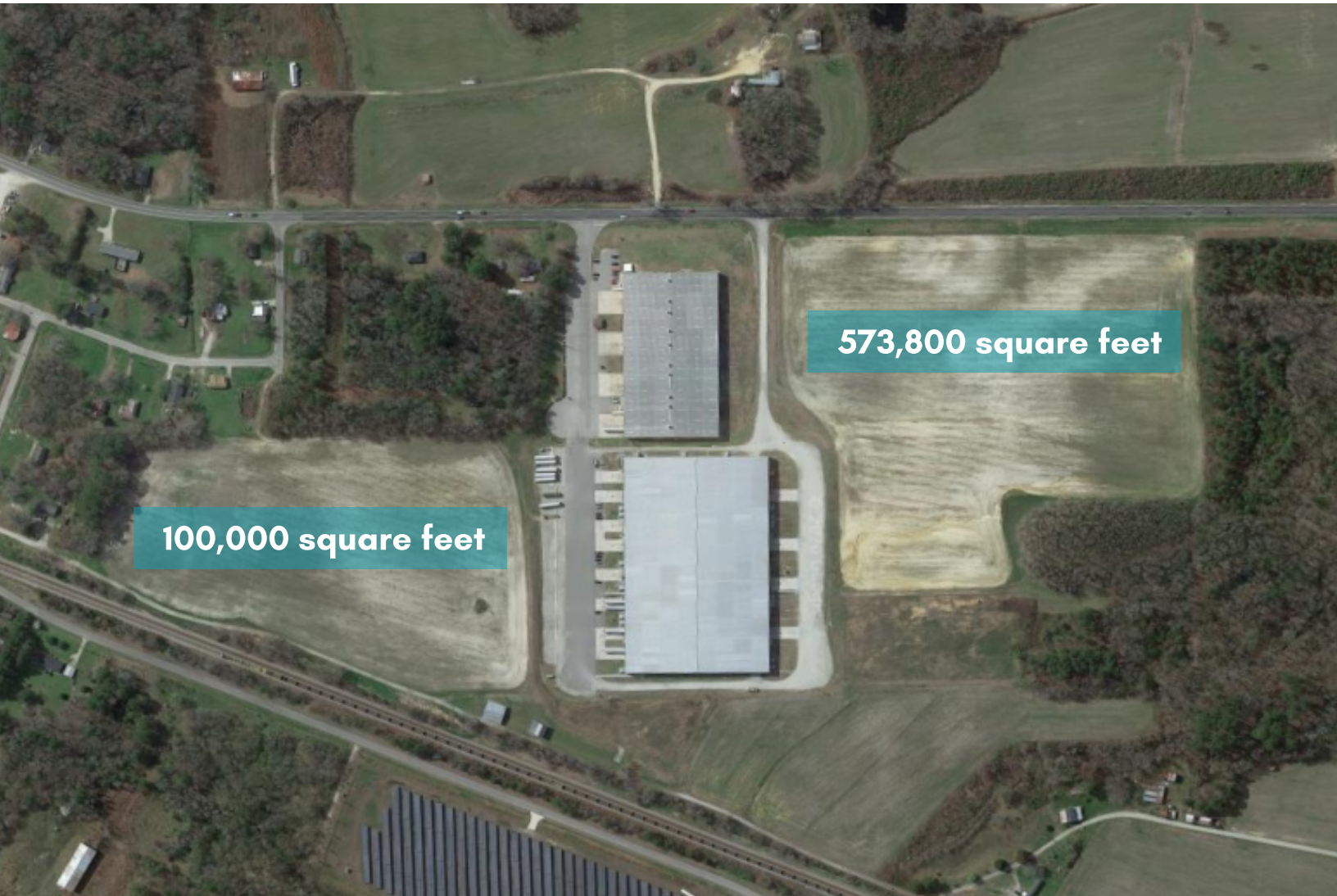




Nash County

North Carolina

Where Business meets Opportunity



BATTLEBORO RAIL SITES

6551 US 301, Battleboro, NC 27809

Prime location just 2 miles from
CSX Intermodal Rail Terminal
and 5 miles from Interstate 95.

- ✓ ELECTRIC
- ✓ WATER
- ✓ SEWER
- ✓ FIBER
- ✓ NATURAL GAS

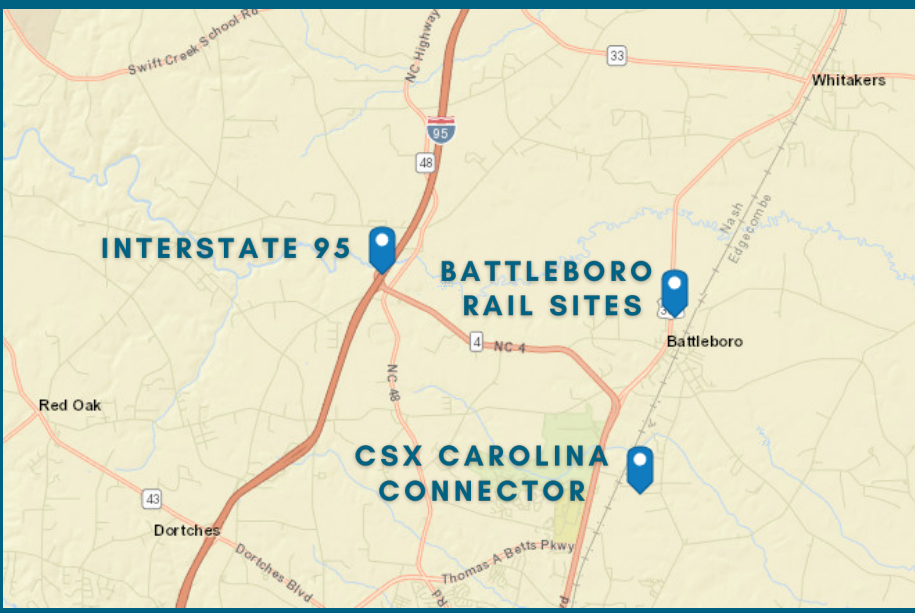
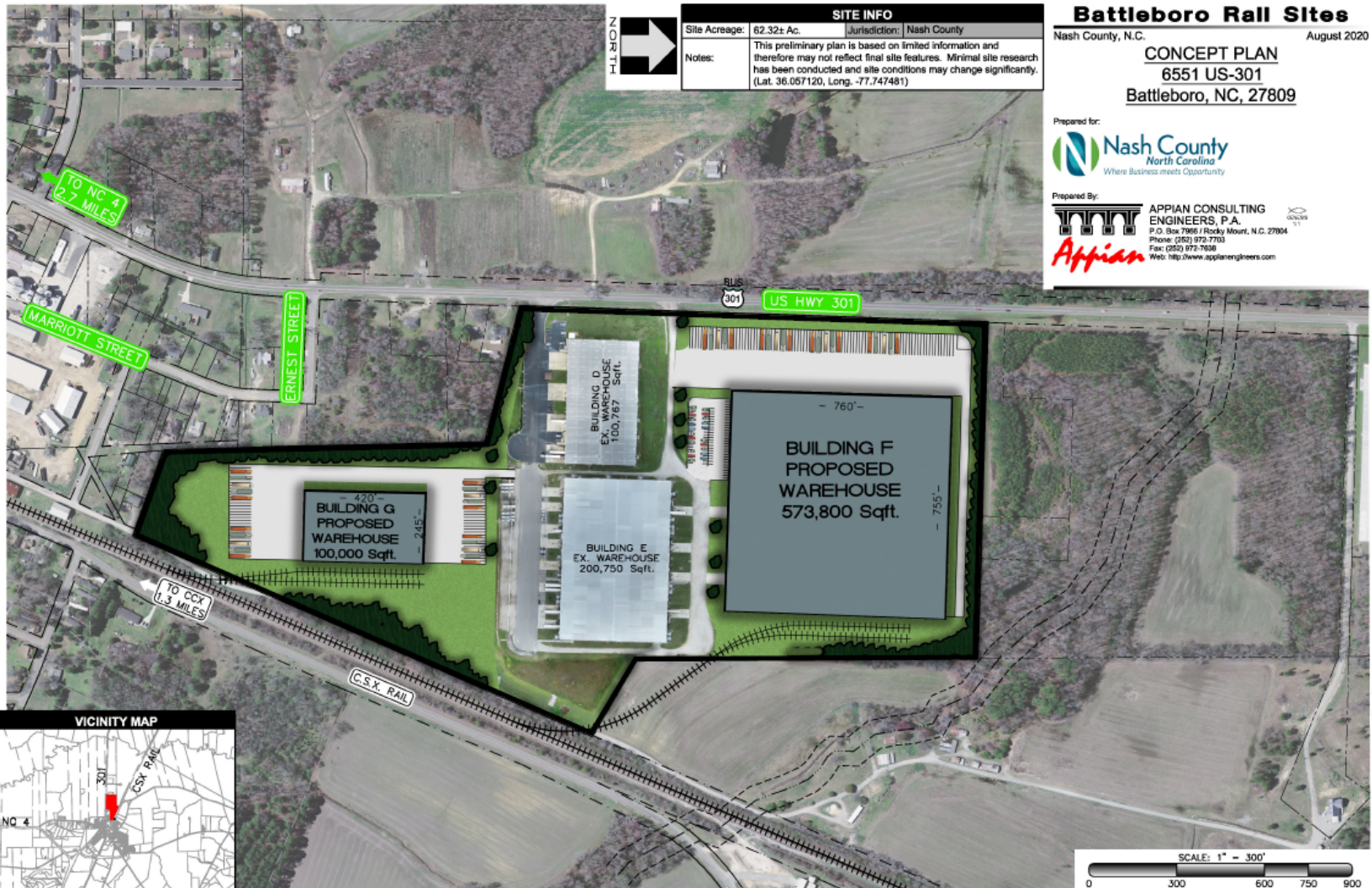
SELECTNASHNC.COM

SITE INFO	Site Acreage: 62.32± Ac.	Jurisdiction: Nash County
Notes:	This preliminary plan is based on limited information and therefore may not reflect final site features. Minimal site research has been conducted and site conditions may change significantly. (Lat. 36.057120, Long. -77.747481)	

CONCEPT PLAN
6551 US-301
Battleboro, NC, 27809



Prepared By:
Applan
APPIAN CONSULTING ENGINEERS, P.A.
P.O. Box 71965 / Rocky Mount, N.C. 27804
Phone: (252) 972-7703
Fax: (252) 972-7638
Web: <http://www.applanengineers.com>



Build-to-suit industrial buildings to lease.

Building F:

573,800 square feet

Building G:

100,000 square feet



Andy Hagy | 252-462-2737
andy.hagy@nashcountync.gov