

FOR SALE

750 S 32ND ST

*40,024 SF Industrial Building
Available For Sale in Washougal, WA*

S 32ND ST

STRUMAN ST

KIDDER.COM

km Kidder
Mathews

750 S 32ND ST

Two-floor 40,024 SF industrial building located in the Camas/Washougal Industrial Park just off of Hwy-14.

ADDRESS	750 S 32nd St, Washougal, WA
BUILDING SIZE	40,024 SF Shell 13,588 SF Mezzanine
LAND SIZE	±3.71 AC
SPACE DESCRIPTION	Manufacturing, laboratory, cleanroom, and office space with conference room, kitchen, and reception area
LOADING DOORS	Six (6) grade-level doors
CLEAR HEIGHT	As high as 24' clear in open manufacturing space
HVAC	Fully climate controlled
POWER	Heavy power
PARKING	1.68 spaces per 1,000 SF
ZONING	Heavy Industrial (HI)

40,024 SF

SHELL SIZE

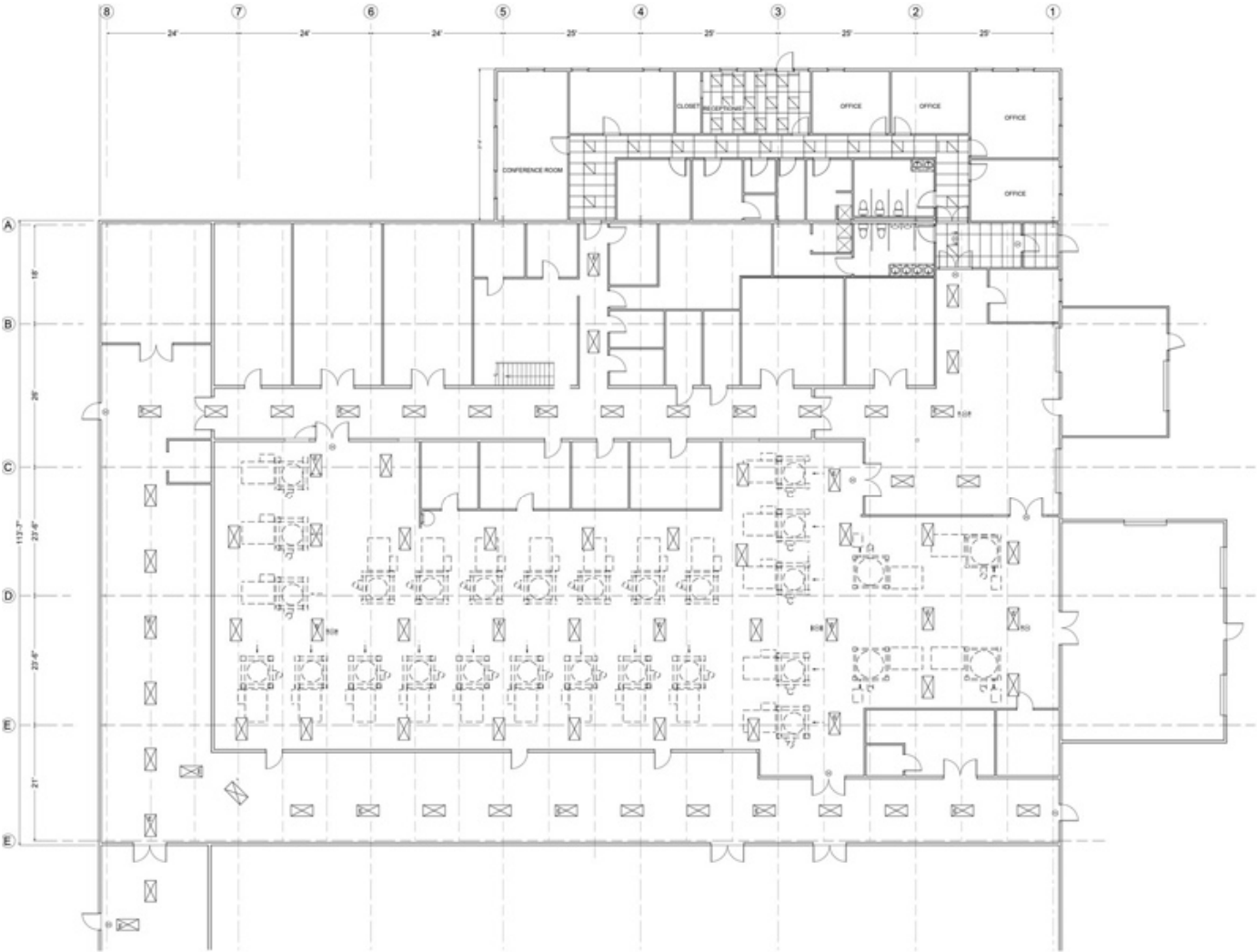
\$5.5M

SALE PRICE

AVAILABLE FOR SALE

KIDDER MATHEWS

FIRST FLOOR PLAN



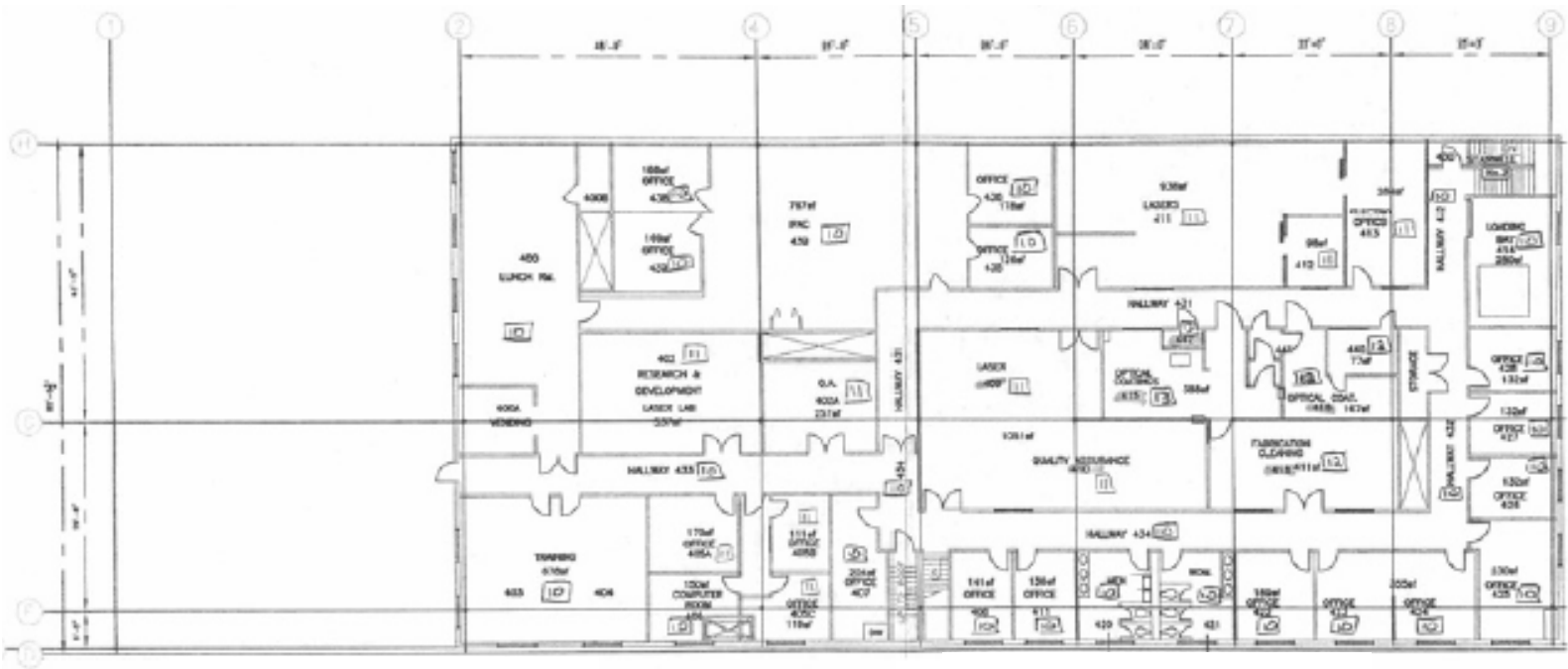
40,024 SF

SHELL AREA

13,588 SF

MEZZANINE AREA

SECOND FLOOR PLAN





750 S 32ND ST

*For more information on
this property, please contact*

JOHN HALLMAN
Vice President
503.939.2772
john.hallman@kidder.com

SCOTT MURPHY, SIO
Executive Vice President
503.221.2287
scott.murphy@kidder.com

KIDDER.COM

This information supplied herein is from sources we deem reliable. It is provided without any representation, warranty, or guarantee, expressed or implied as to its accuracy. Prospective Buyer or Tenant should conduct an independent investigation and verification of all matters deemed to be material, including, but not limited to, statements of income and expenses. Consult your attorney, accountant, or other professional advisor. All Kidder Mathews designs are the sole property of Kidder Mathews. Branded materials and layouts are not authorized for use by any other firm or person.

**km Kidder
Mathews**