

ONE

WEST FORDHAM ROAD

BETWEEN JEROME & DAVIDSON AVENUES
THE BRONX



ONE

WEST FORDHAM ROAD

BETWEEN JEROME & DAVIDSON AVENUES
THE BRONX

SIZE: 8,118 SF Second Floor
(dedicated vestibule on ground floor)

SIGNAGE: 80' on West Fordham

CEILING HEIGHT: 13' 4"

POSSESSION: Immediate

TRANSPORTATION: 

HIGHLIGHTS:

- Accessible via dedicated vestibule on ground floor with elevator
- Adjacent to Fordham Road 4 train station
- High foot traffic area
- Dense residential neighborhood
- Neighboring tenants include:
Twin Donut, Qdoba, Blink Fitness, Panda Express, Taco Bell, Dunkin', T-Mobile, McDonald's, Walgreens, Kennedy Fried Chicken, CityMD, Perfumania, Easy Pickens, Bank of America, Subway, AT&T, Citibank, & many more!



All information supplied in this marketing presentation and/or flyer is from sources deemed reliable and is furnished subject to errors, omissions, modifications, removal of listings from sale/lease and to any listing condition. Any square footage, dimensions, floor plans and/or technical data set forth are approximations and are subject to further elaboration/confirmation.

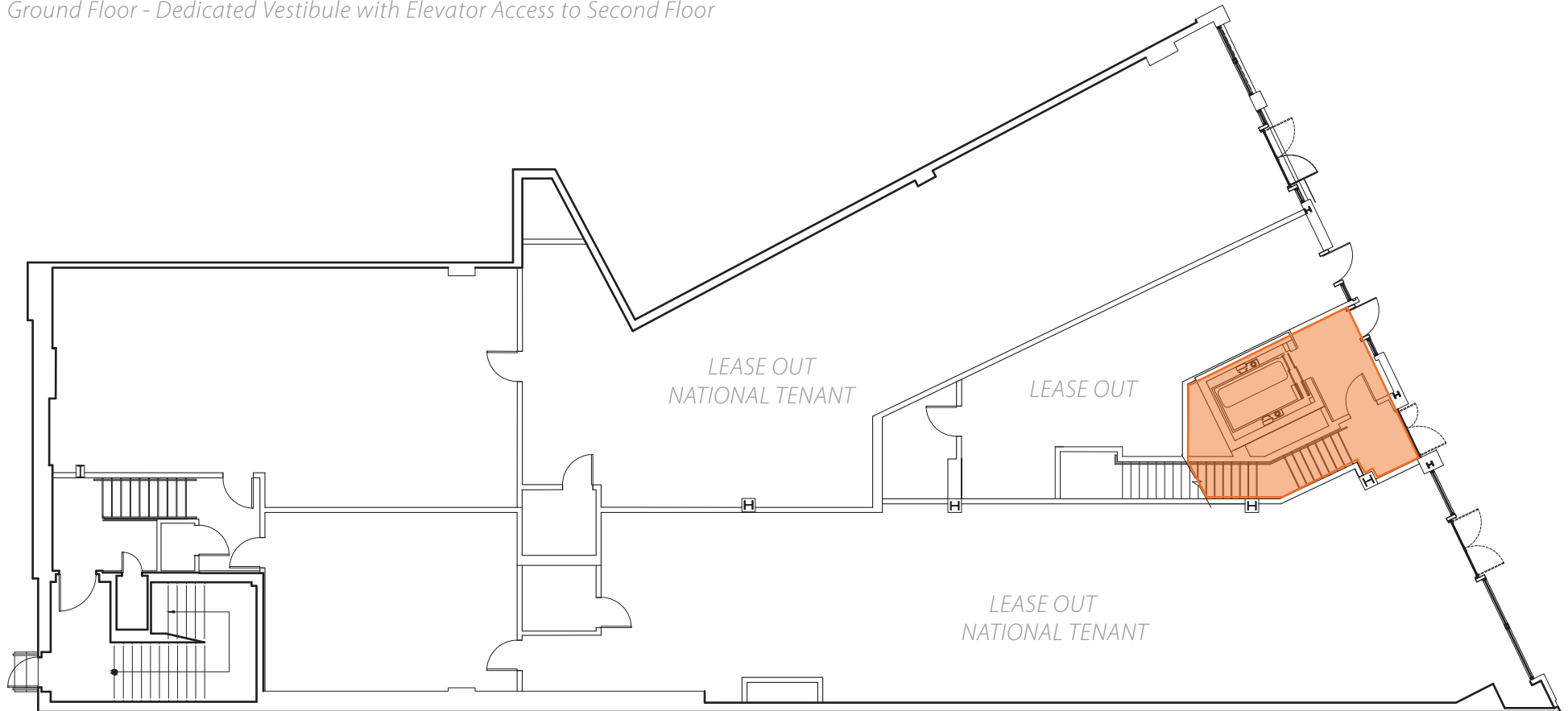


ONE

WEST FORDHAM ROAD

Floor Plans:

Ground Floor - Dedicated Vestibule with Elevator Access to Second Floor

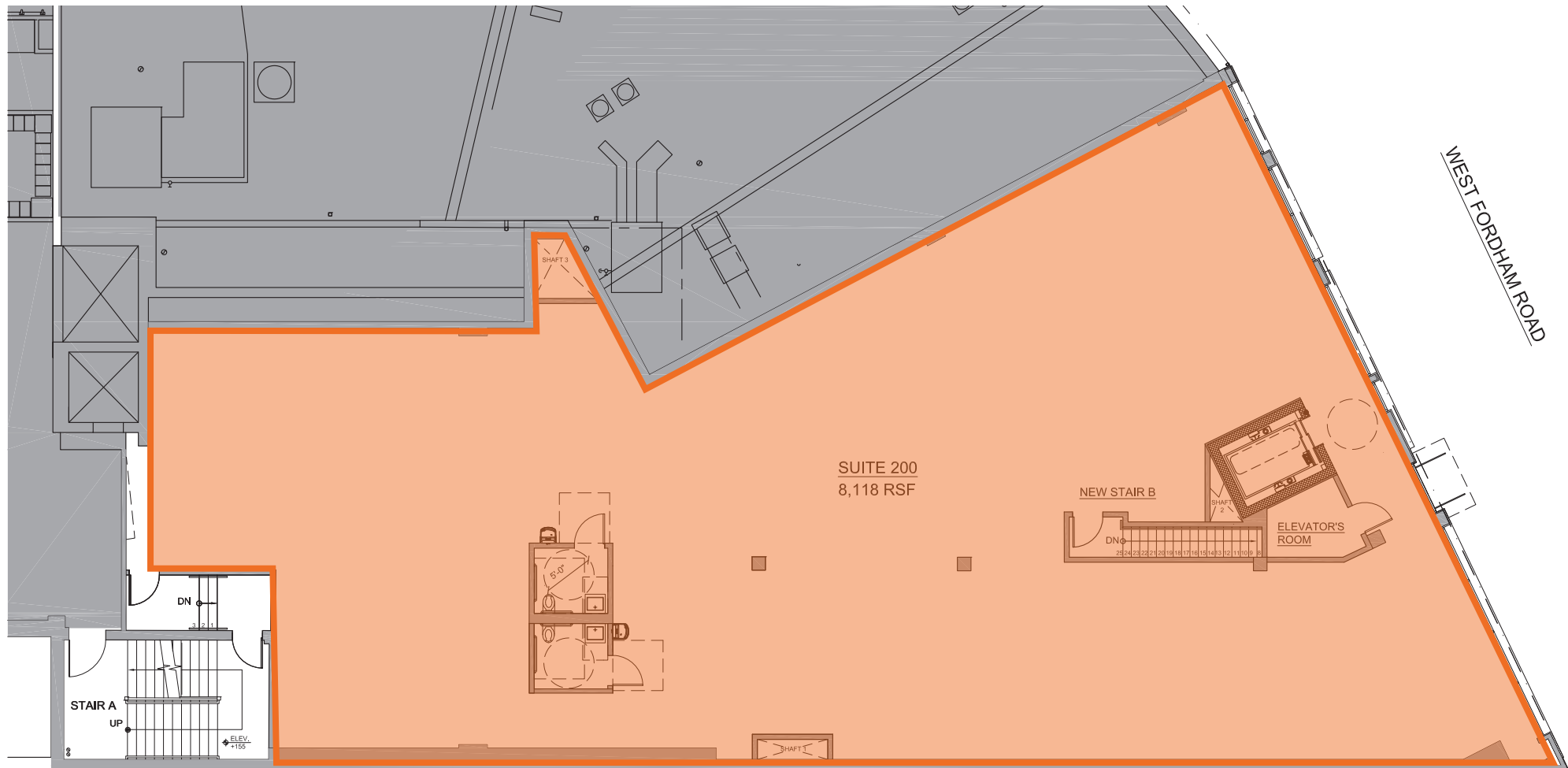


ONE

WEST FORDHAM ROAD

Floor Plans:

Second Floor - 8,118 SF



All information supplied in this marketing presentation and/or flyer is from sources deemed reliable and is furnished subject to errors, omissions, modifications, removal of listings from sale/lease and to any listing condition. Any square footage, dimensions, floor plans and/or technical data set forth are approximations and are subject to further elaboration/confirmation.

ONE

WEST FORDHAM ROAD

BETWEEN JEROME & DAVIDSON AVENUES
THE BRONX

FOR MORE INFORMATION,
PLEASE CONTACT:

MILES SABBAGH

646.894.3176 | Miles@ksrny.com

MARC SITT

917.757.8863 | MSitt@ksrny.com

ALBERT MANOPLA

212.380.8369 | AManopla@ksrny.com

