



French Quarter Square Shopping Center

2573 RICHMOND ROAD, STE. 390, LEXINGTON, KY 40509

CONTACT

BRYAN LITTLE

859.619.4969 | bryan@littlerealestateky.com



The information contained herein was obtained from sources deemed reliable; however, no guarantees, warranties or representations as to the completeness or accuracy thereof. The presentation of this real estate information is subject to errors; omissions; change of price; prior sale or lease; or withdrawal without notice.

kycommercial.net

PROPERTY DESCRIPTION

Retail for Lease

2573 Richmond Road, Ste. 390, Lexington, KY 40509



LOCATION

2573 Richmond Road, Lexington, KY 40509

Located on Richmond Road just off New Circle Road in southeast Lexington

AVAILABLE

2,561 SF

Retail space with dressing rooms

RATE

\$25/SF/YR

\$7.00 NNN

HIGHLIGHTS

- ±2,561 SF retail space available with existing dressing rooms
- Located within French Quarter Square, a ±37,500 SF retail/office center along Richmond Road
- Strong co-tenancy with established, high-traffic users including Sun Tan City, Posh Salon & Spa, Playa Bowls, D1 Sports Training, and Viva Mexico
- Synergistic tenant mix of fitness, beauty, food, and service users driving consistent daily traffic
- Positioned adjacent to DoubleTree by Hilton (155-key full-service hotel), attracting both local and visitor traffic
- High-visibility location along Richmond Road

DEMOGRAPHICS

	1 Mile	3 Mile	5 mile
Population	13.8K	102.8K	231.9K
Daytime Population	15.2K	114.9K	231K
Household Income Avg.	\$67K	\$90.9K	\$87.7K

KY COMMERCIAL

1908 Bryant Road, Suite 250, Lexington, KY 40509
www.kycommercial.net

BRYAN LITTLE

p: 859.619.4969

e: bryan@littlerealestateky.com



PROPERTY PHOTOS

Retail for Lease
2573 Richmond Road, Ste. 390, Lexington, KY 40509



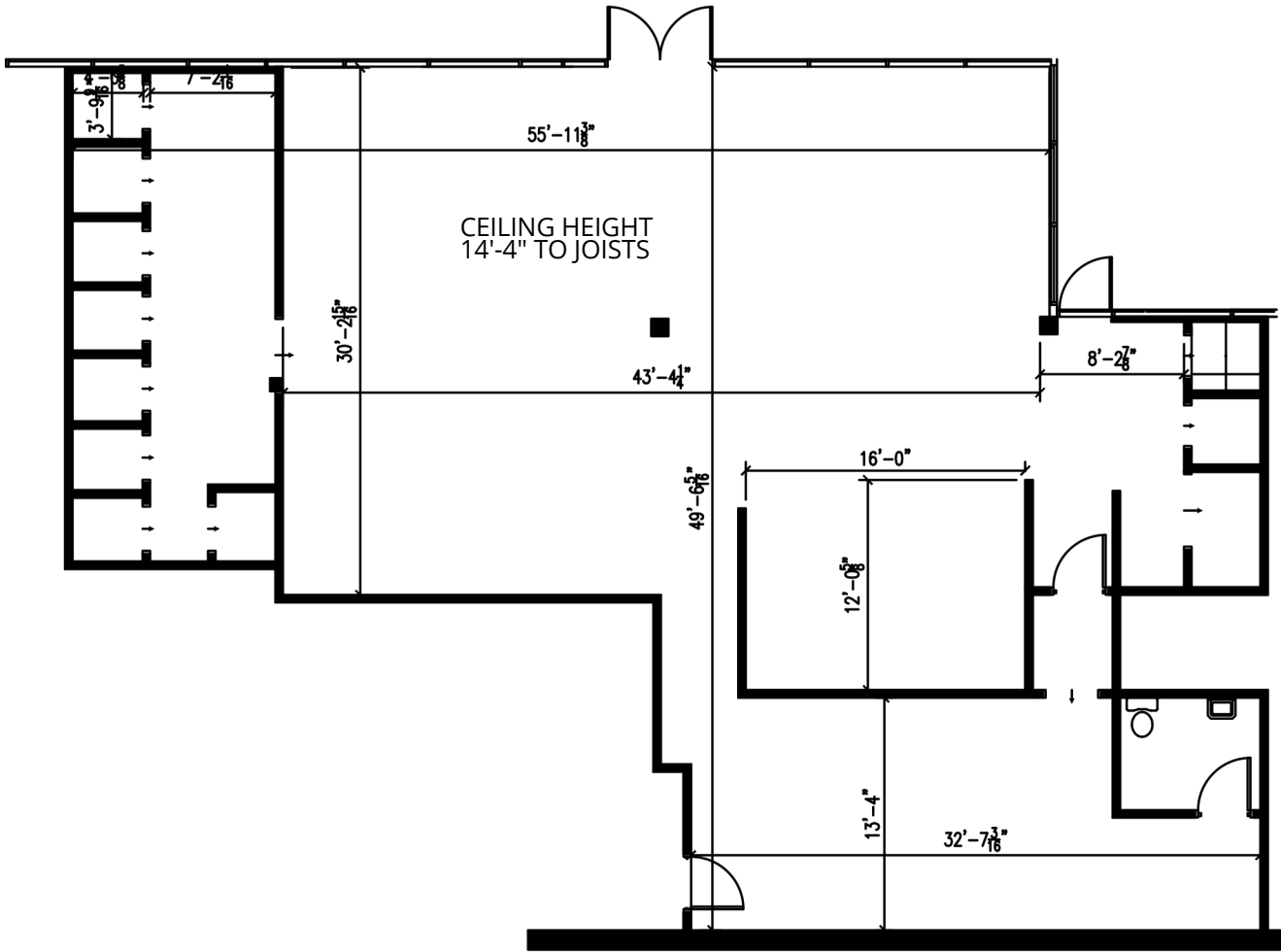
KY COMMERCIAL
1908 Bryant Road, Suite 250, Lexington, KY 40509
www.kycommercial.net

BRYAN LITTLE
p: 859.619.4969
e: bryan@littlerealestateky.com

SUITE 390 FLOORPLAN

Retail for Lease

2573 Richmond Road, Ste. 390, Lexington, KY 40509



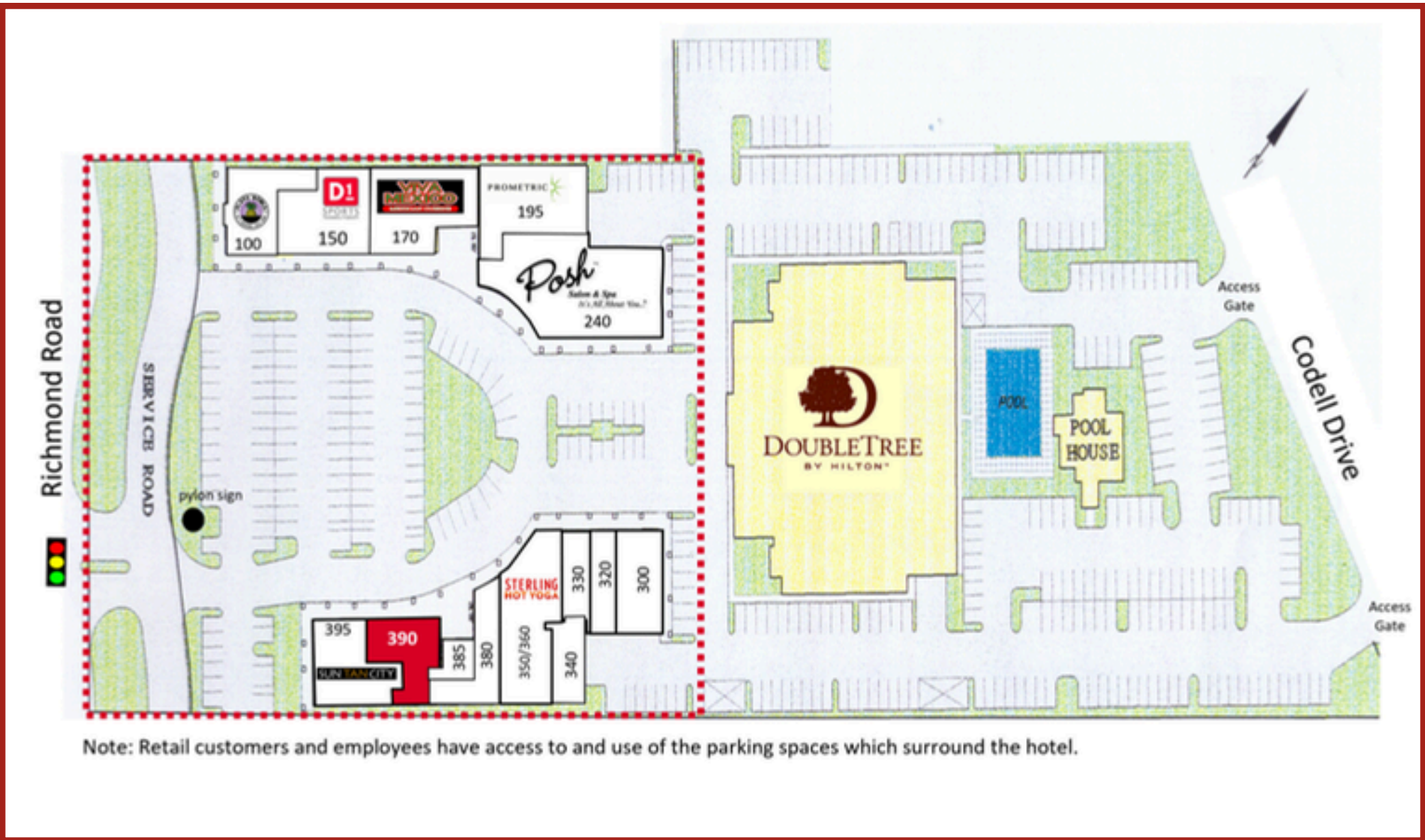
KY COMMERCIAL
1908 Bryant Road, Suite 250, Lexington, KY 40509
www.kycommercial.net

BRYAN LITTLE
p: 859.619.4969
e: bryan@littlerealestateky.com

SITE PLAN

Retail for Lease

2573 Richmond Road, Ste. 390, Lexington, KY 40509



Note: Retail customers and employees have access to and use of the parking spaces which surround the hotel.



KY COMMERCIAL
1908 Bryant Road, Suite 250, Lexington, KY 40509
www.kycommercial.net

BRYAN LITTLE
p: 859.619.4969
e: bryan@littlerealestateky.com

SITE AERIAL

Retail for Lease

2573 Richmond Road, Ste. 390, Lexington, KY 40509



KY COMMERCIAL
1908 Bryant Road, Suite 250, Lexington, KY 40509
www.kycommercial.net

BRYAN LITTLE
p: 859.619.4969
e: bryan@littlerealestateky.com

TENANT OVERVIEW

Retail for Lease
2573 Richmond Road, Ste. 390, Lexington, KY 40509

Suite	Tenant Name	Size SF
Suite 100	Playa Bowls	2,204 SF
Suite 150	D1 Sports Training	4,068 SF
Suite 170	Viva Mexico, LLC	3,462 SF
Suite 195	Prometric Testing	3,212 SF
Suite 240	Posh Salon & Spa	5,649 SF
Suite 300	Revive Lex	2,120 SF
Suite 320	Painting With A Twist	1,320 SF
Suite 330	Pilates Studio	1,190 SF
Suite 340	Storage	969 SF
Suite 350	Sterling Hot Yoga	980 SF
Suite 360	Sterling Hot Yoga	2,925 SF
Suite 380	Moda Alterations	1,749 SF
Suite 385	Healthy Vibes	484 SF
Suite 390	AVAILABLE	2,561 SF
Suite 395	Sun Tan City	2,919 SF
Totals		35,812 SF



KY COMMERCIAL
1908 Bryant Road, Suite 250, Lexington, KY 40509
www.kycommercial.net

BRYAN LITTLE
p: 859.619.4969
e: bryan@littlerealestateky.com

LOCAL SURROUNDINGS

Retail for Lease

2573 Richmond Road, Ste. 390, Lexington, KY 40509



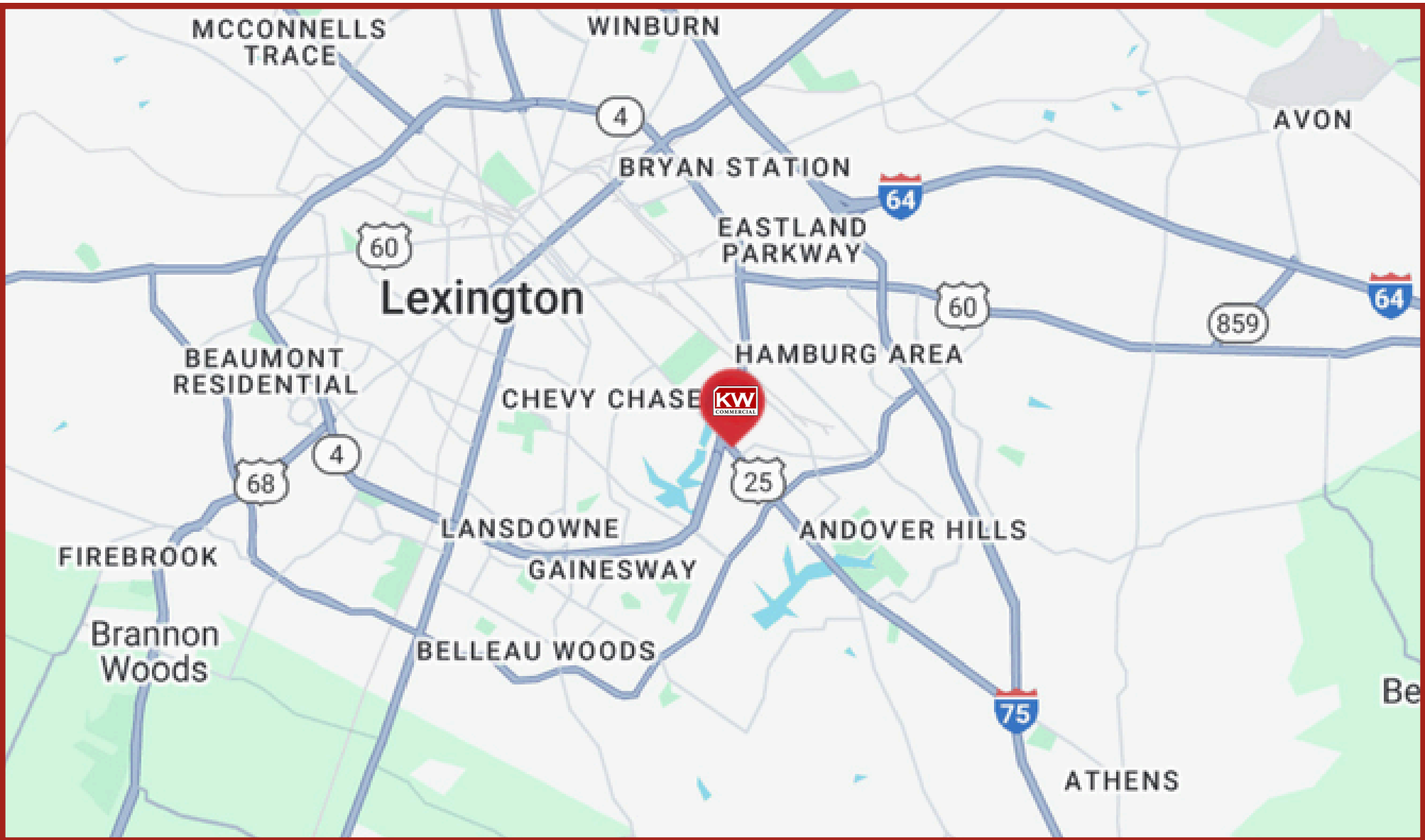
KY COMMERCIAL
1908 Bryant Road, Suite 250, Lexington, KY 40509
www.kycommercial.net

BRYAN LITTLE
p: 859.619.4969
e: bryan@littlerealestateky.com

LEXINGTON LOCATION

Retail for Lease

2573 Richmond Road, Ste. 390, Lexington, KY 40509



KY COMMERCIAL
1908 Bryant Road, Suite 250, Lexington, KY 40509
www.kycommercial.net

BRYAN LITTLE
p: 859.619.4969
e: bryan@littlerealestateky.com