

ELIZABETHTON MEDICAL OFFICE

1503 West Elk Avenue
Elizabethton, TN 37643

Location

Adjacent to Sycamore Shoals Hospital in Elizabethton

Available for Sale or Lease

Suite 12: 3,478 SF medical office
For sale: \$452,140
For lease: \$15/SF/year NNN

Highlights

Large reception area and waiting room
9 exam rooms with sinks
1 hard-walled office
Break area
Nurse's station
3 restrooms
2 storage closets

Traffic Counts

W Elk Ave: 32,608 (2022)

Demographics

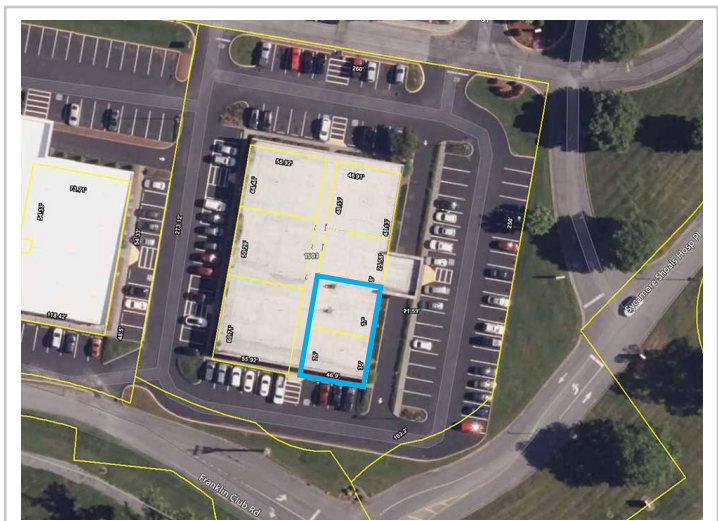
(2024 Est.)	3 mile	5 mile	10 mile
Population	19,571	39,175	136,231
Median HH Income	\$52,095	\$51,115	\$56,320
Median Age	44.7	43.2	41.1

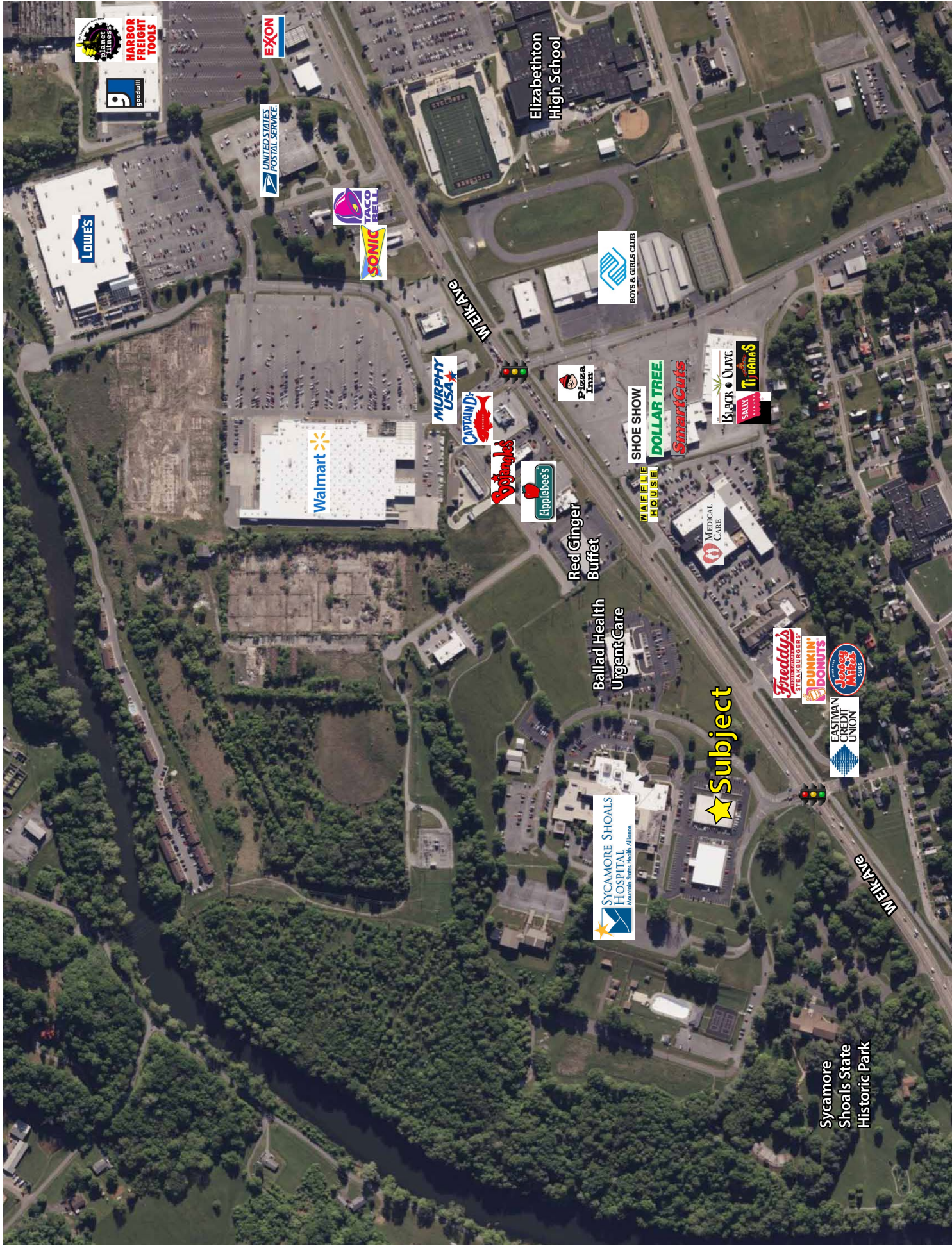
Contact

John Speropulos, CCIM, SIOR
john@mitchcox.com

Marc Murphy, CCIM
mmurphy@mitchcox.com

📞 423-282-6582 | 📠 423-282-5903
www.mitchcox.com





Planet Fitness
HARBOR FREIGHT TOOLS
9
granum

EXXON

UNITED STATES POSTAL SERVICE

LOWE'S

TACO BELL
SONIC

Elizabethton High School

BOYS & GIRLS CLUB

WINK AVE

MURPHY USA

CAPTAIN D'S

Pizzeria LITA

SHOE SHOW

DOLLAR TREE
SmartCuts

BLACK & CHAVE

SALLY'S
TIGANA'S

Walmart

Bobbees

Applebee's

Red Ginger Buffet

WAFLE HOUSE

MEDICAL CARE

Ballad Health Urgent Care

Fineo's STEAK BURGER

DUNKIN' DONUTS

Joseph Milk's

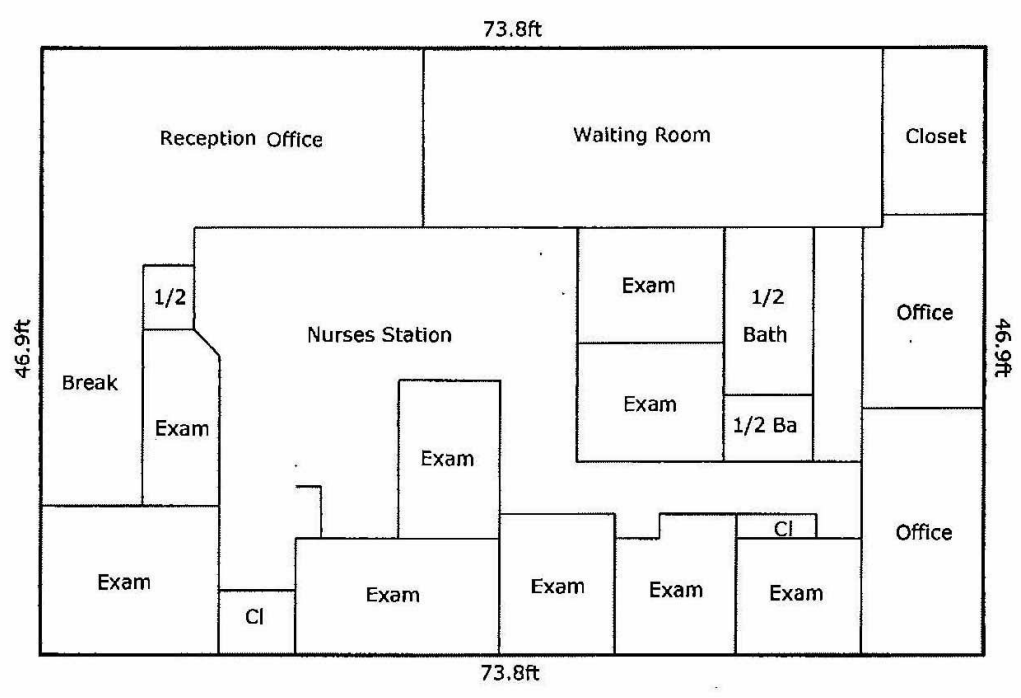
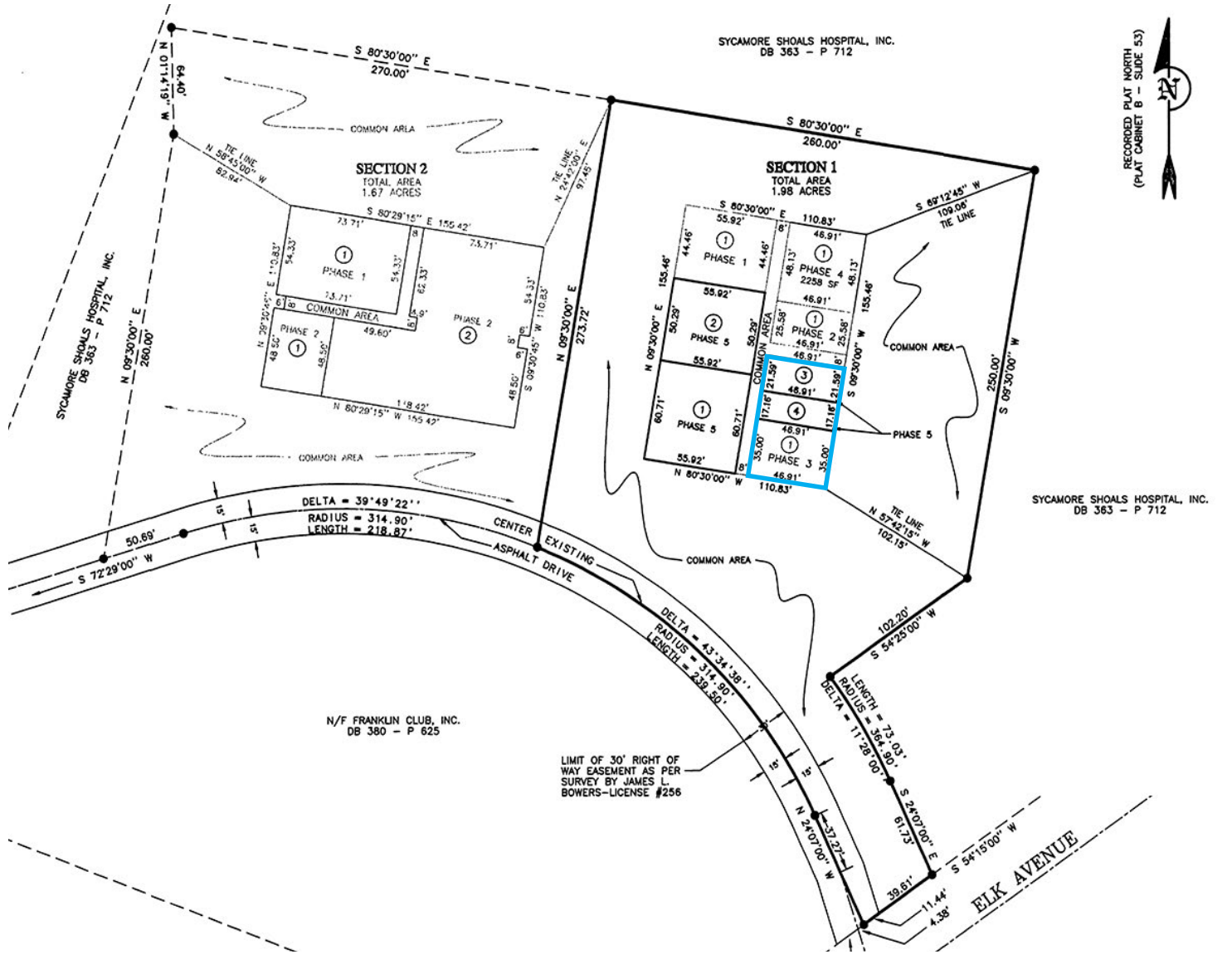
★ Subject

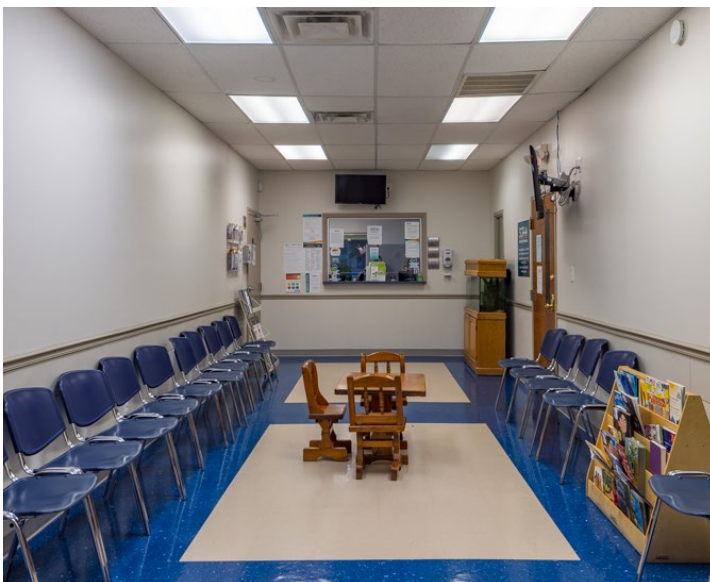
EASTMAN CREDIT UNION

SYCAMORE SHOALS HOSPITAL
A Division of Sycamore Health Alliance

Sycamore Shoals State Historic Park

WINK AVE





MITCH COX
REALTOR, INC.

2304 Silverdale Drive, Suite 200, Johnson City, TN 37601
423-282-6582 (o) 423-282-5903 (f) www.mitchcox.com