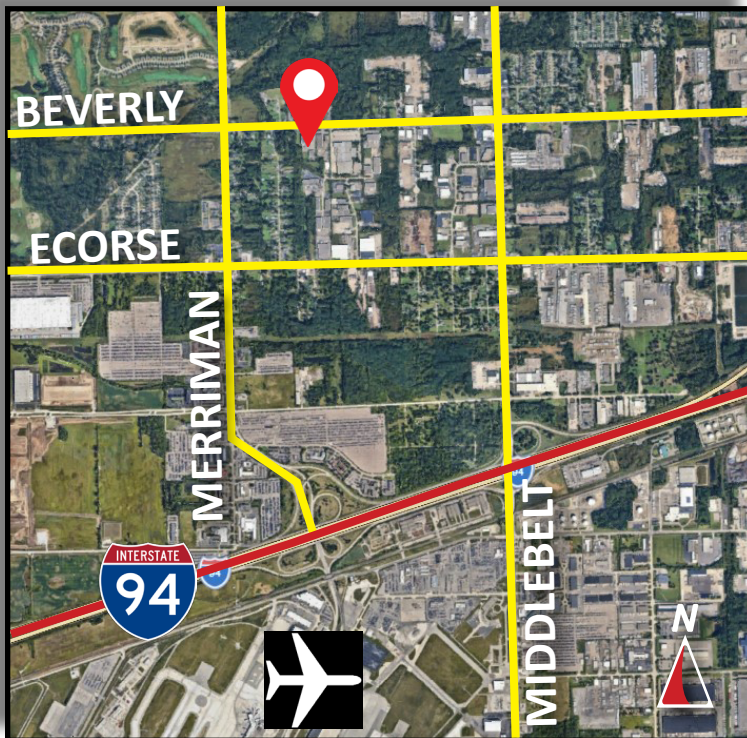


Burger

& COMPANY

FOR LEASE

30881 Beverly Road
Romulus, Michigan
17,300 Square Feet



- 17,300 square feet
- Handsome brick over block building built by D&G Construction
- Located between two I-94 interchanges with quick access to I-275 and DTW
- One (1) truckwell with room to add more
- One (1) 20'x14' extra wide grade level door
- 22' clear height
- Fully sprinklered
- Approximately 2,000 square feet of office space that features a conference room and kitchen
- 2.97 acre lot allows for expansion or potential outdoor storage
- Lease Rate: \$7.95 PSF NNN

Burger & Company

Nicolo Burger, SIOR, CCIM
Vice President
Cell: 810.224.8103
nic@burgercollc.com

Paul Burger, SIOR
President
Cell: 586.202.7800
paul@burgercollc.com

248.536.2888
www.burgercollc.com
38345 W. 10 Mile Road, Suite 100
Farmington Hills, MI 48335

Information contained herein is deemed to be reliable but is not guaranteed and may be withdrawn at any time.

FOR LEASE

30881 Beverly Road
Romulus, MI



BUILDING SPECIFICATIONS

Location	Beverly Between Merriman & Middlebelt	Total Building Square Feet	17,300 SF
County	Wayne	Office Square Feet	2,000 SF +/-
Zoning	M-1 Light Industrial	Warehouse Square Feet	15,300 SF
Lot Size	2.97 Acres	Year Built	1998
Construction	Brick Over Block	Roof	Flat
Clear Height	22'	Grade Level Doors	One (1) 20'x14'
Cranes	No	Dock Doors	One (1)
Lighting	Fluorescent	Power	3 Phase / 208V
Heating	Radiant	Sprinklers	Yes
Warehouse A/C	No	Railroad	No
Buss Duct	No	Signage	Yes
Parking	20 Car	Restrooms	Multiple
Freestanding	Yes	Property Taxes	\$23,503.52 (2025)

Description

- 17,300 square feet
- Handsome brick over block building built by D&G Construction
- Located between two I-94 interchanges with quick access to I-275 and DTW
- One (1) truckwell with room to add more
- One (1) 20'x14' extra wide grade level door
- 22' clear height
- Fully sprinklered
- Approximately 2,000 square feet of office space that features a conference room and kitchen
- 2.97 acre lot allows for expansion or potential outdoor storage

Lease Rate \$7.95 PSF NNN

Availability June 1st, 2026

Burger

& COMPANY

Nicolo Burger, SIOR, CCIM
Vice President
Cell: 810.224.8103
nic@burgercollc.com

Paul Burger, SIOR
President
Cell: 586.202.7800
paul@burgercollc.com

248.536.2888
www.burgercollc.com
38345 W. 10 Mile Road, Suite 100
Farmington Hills, MI 48335

Information contained herein is deemed to be reliable but is not guaranteed and may be withdrawn at any time.

FOR LEASE

30881 Beverly Road
Romulus, MI

EXTERIOR IMAGES



Burger

& COMPANY

Nicolo Burger, SIOR, CCIM
Vice President
Cell: 810.224.8103
nic@burgercollc.com

Paul Burger, SIOR
President
Cell: 586.202.7800
paul@burgercollc.com

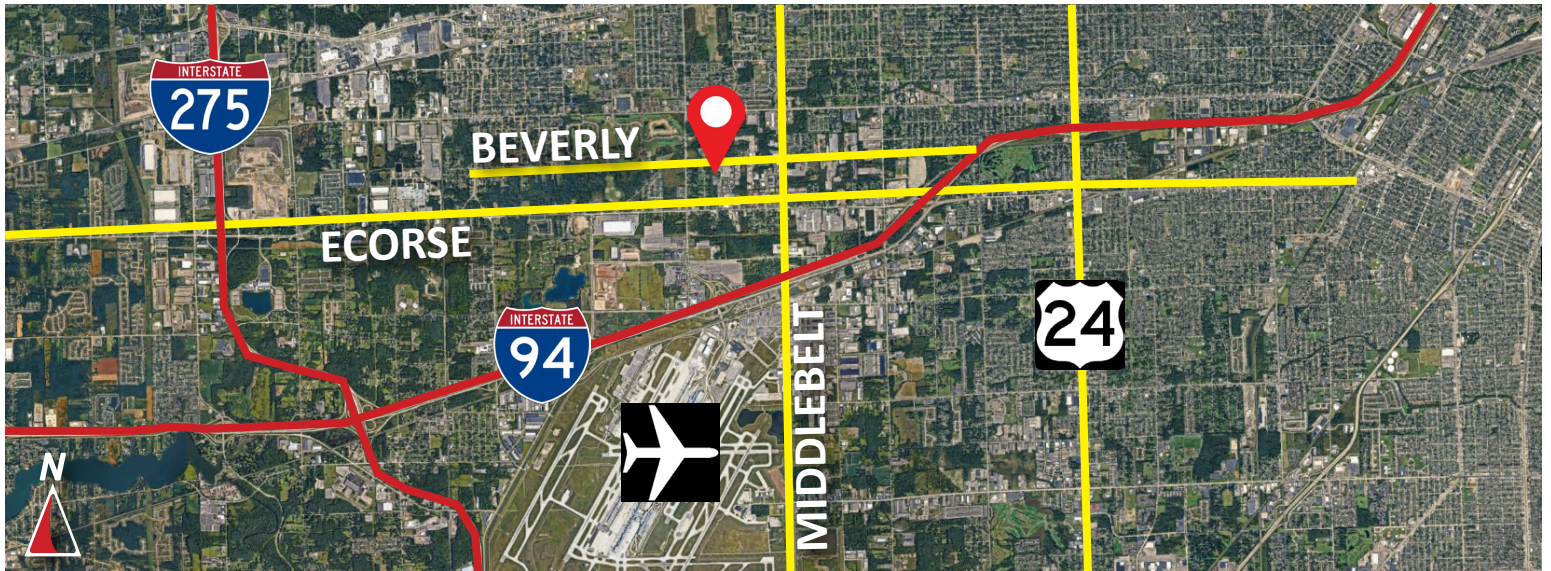
248.536.2888
www.burgercollc.com
38345 W. 10 Mile Road, Suite 100
Farmington Hills, MI 48335

Information contained herein is deemed to be reliable but is not guaranteed and may be withdrawn at any time.

FOR LEASE

30881 Beverly Road
Romulus, MI

AERIAL / LOCATION MAP



Burger

& COMPANY

Nicolo Burger, SIOR, CCIM
Vice President
Cell: 810.224.8103
nic@burgercollc.com

Paul Burger, SIOR
President
Cell: 586.202.7800
paul@burgercollc.com

248.536.2888
www.burgercollc.com
38345 W. 10 Mile Road, Suite 100
Farmington Hills, MI 48335

Information contained herein is deemed to be reliable but is not guaranteed and may be withdrawn at any time.