

1|7|9|9 FULTON
STREET



SECOND GENERATION CAFÉ ON A PRIME CORNER

+/- 1,200 SF

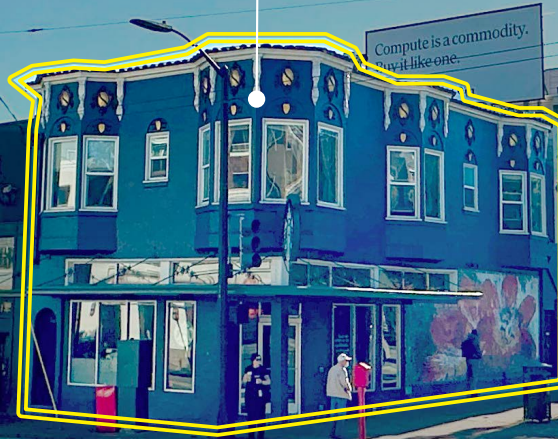
maven
RETAIL



PAPALOTE

ALTAMIRANO

1799 FULTON STREET



Fulton Street

Masonic Avenue

FEATURES

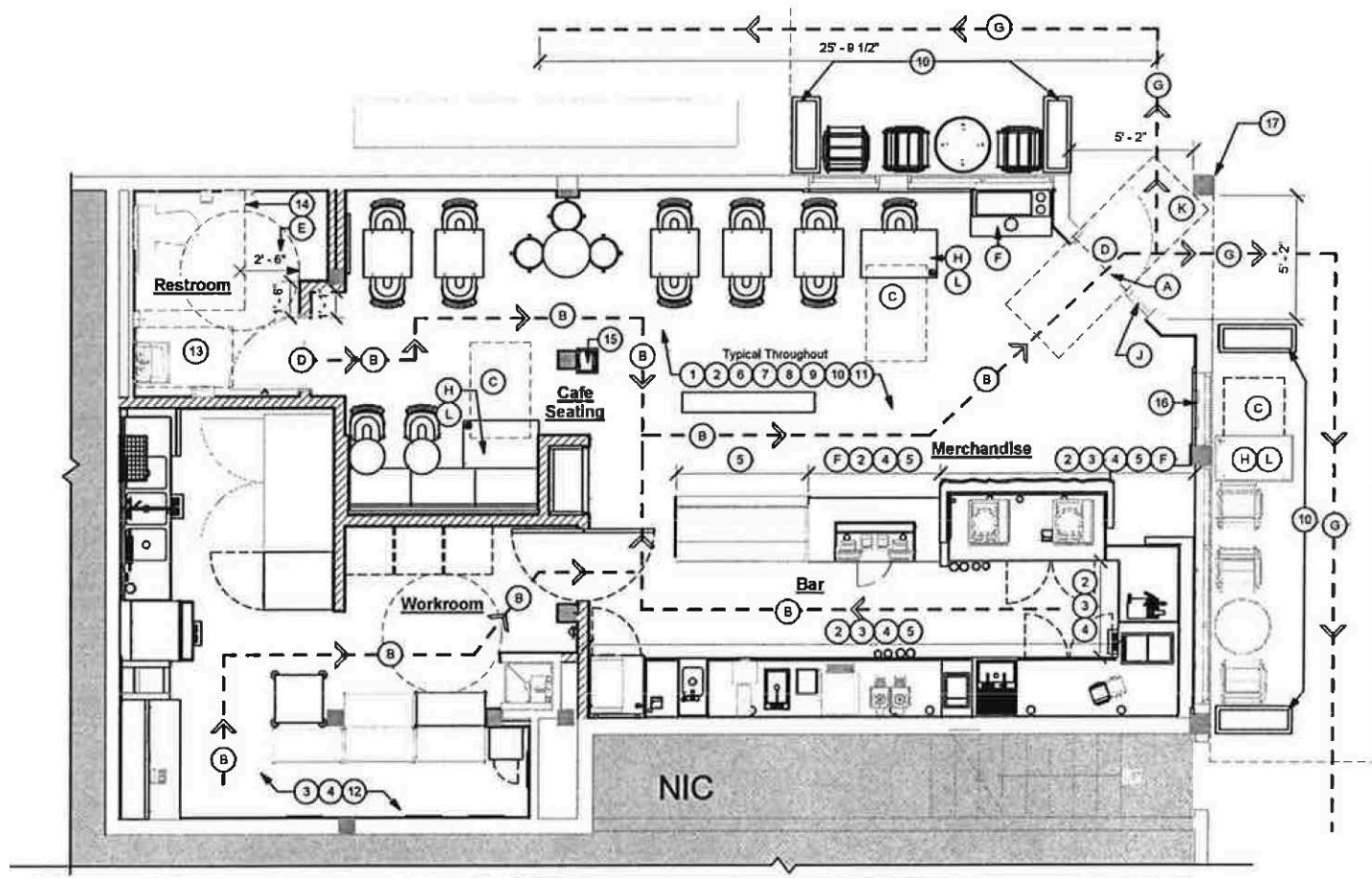
- +/- 1,200 SF
- Second generation café
- Prime signalized corner location at Fulton & Masonic
- Located on a major bus line/bus stop on the corner
- 15,000 Average Daily Traffic at the Fulton & Masonic intersection
- Free parking available in the Lucky's garage
- Great signage opportunity
- Recent improvements
- Steps from the USF campus and the Panhandle
- Nearby businesses include Altamirano, Lucky's, Papalote, Target, Whole Foods, Bob's Donuts, Matching Half, UCSF Hospital, Kaiser Permanente, and many more

Discover a fantastic opportunity at 1799 Fulton Street, a second-generation café space situated at the high-traffic corner of Fulton & Masonic. This prime location offers excellent visibility and a substantial footfall, enhanced by its position on a major bus line with a convenient bus stop right at the corner. With recent improvements and prime signage potential, this space is ready for a vibrant new concept. Steps away from the University of San Francisco campus and the iconic Panhandle, it's ideally positioned to attract both local residents and the student community. Nearby popular businesses include Altamirano, Lucky's, Papalote, Target, Whole Foods, Bob's Donuts, Matching Half, and healthcare hubs like UCSF Hospital and Kaiser Permanente. This is a rare chance to establish your business in a lively neighborhood with a thriving mix of retail, dining, and lifestyle destinations.





FLOOR PLANS





PAPALOTE

1799 FULTON
STREET



43

MASONIC



5, 5R

ALTAMIRANO

PENDING
BREW PUB

THE VILLAGE
AT PETRINI PLACE

Lucky

WALK/BIKE/TRANSIT SCORE

96
WALK SCORE

77
BIKE SCORE

96
TRANSIT SCORE

BUS LINES:
5, 21, 31, 43

USF
Koret Health and
Recreation Center

TRADER JOE'S ▲



BOB'S
DONUTS

Dignity Health
St. Mary's Medical Center



MANITAS CAFE

1799
FULTON
STREET

BISTRO
CENTRAL
PARC



CENTRAL COFFEE
TEA & SPICE



FLYWHEEL COFFEE
 WHOLE FOODS MARKET
 CITRUS CLUB
 WHAT THE CLUCK
 BORDERLANDS
 CANTATA COFFEE
 S.F. MERCANTILE
 WASTELAND
 BRIOCHE
 FTC
 AMOEBA MUSIC
 LAGUNA CAFE
 CHA CHA CHA
 GINZA SUSHI
 ESCAPE FROM NEW YORK
 BOOKSMITH
 JOHN FLUEVOG
 CAFE COLE
 DRAGONHEATS
 DECADES OF FASHION
 INDIGO CO-OP
 DR. MARTENS
 CARY LANE
 STREET TACO
 ABU
 HELD OVER
 SLICE HOUSE
 CLUB DELUXE
 AVIATOR NATION
 MAD DOG
 2ND STREET
 MENDELS
 GUS'S MARKET
 BEN & JERRY'S
 WAKE UP
 PIEDMONT BOUTIQUE
 1428 HAIGHT
 LOVE ON HAIGHT
 MAGNOLIA BREWING
 CEIBA
 CANDY'S
 FIREBIRD
 RITUAL COFFEE
 YARNS
 COFFEE TO THE PEOPLE
 TWISTED THISTLE
 BOUND TOGETHER
 PORK STORE
 COOKIE CLOTHING
 RIVCA
 RELIC
 BIZZA



BISTRO CENTRAL PARC



EARLY TO RISE



ALTAMIRANO



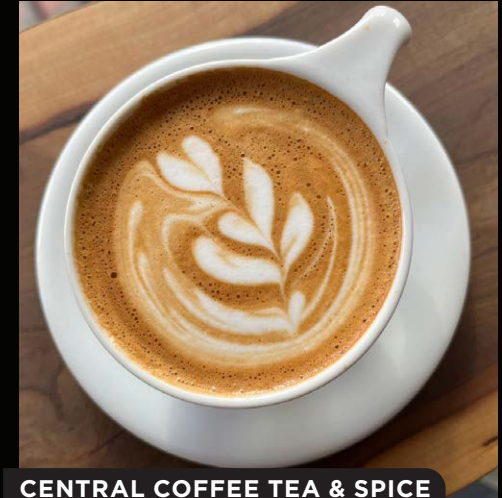
BOB'S ON BAKER STREET



PAPALOTE



UNIVERSITY OF SAN FRANCISCO



CENTRAL COFFEE TEA & SPICE

NOPA

1799 Fulton Street is located in the NOPA neighborhood. The North of Panhandle (NOPA) neighborhood in San Francisco is a vibrant and diverse area characterized by its residential density, proximity to cultural and academic institutions, and emerging commercial opportunities.

At the heart of this community is the Masonic Avenue corridor, a vital thoroughfare that combines residential charm with increasing retail potential. This dense residential area attracts a diverse population, including families, young professionals, and students, thanks to its accessibility and community-oriented vibe. A major highlight of the neighborhood is its proximity to the University of San Francisco (USF). This draws a steady flow of students, faculty, and visitors, contributing to the area's vibrant energy and increasing demand for local services, particularly casual dining and coffee establishments. The Masonic corridor serves as a central artery for the neighborhood, benefiting from consistent pedestrian and vehicular traffic. It is well-connected to public transportation and features key destinations such as the Panhandle, a popular green space. Despite its prime location, the area currently has limited competition in the coffee and café sector, presenting significant opportunities for new operators to cater to the community's growing needs.



CONTACT

JOAN RUYLE

Office 415.404.7313

joan@mavenproperties.com

DRE #02006025

HALEY KLEIN

Office 415.404.7330

haley@mavenproperties.com

DRE #1907308

maven
RETAIL

NOTICE: This information has been secured from sources we believe to be reliable but we make no representations, warranties, express or implied, as to the accuracy of the information. Listing broker has been given enough information to provide only a preliminary interest in the property. The materials are not to be considered fact. The information contained herein is not a substitute for thorough due diligence investigation. References to square footage, zoning, use, or age are approximate. Please contact the San Francisco Planning Department to verify zoning at (415) 558-6378, as neither broker or landlord represent that this space is suitable for your use. Tenant or Buyer must verify the information at their own expense and bears all the risk for any inaccuracies. By receiving these materials you are agreeing to the disclaimers set forth herein. DRE#01878802