

SIGNATURE PLACE OFFICE SPACE



FOR LEASE DOWNTOWN OFFICE SUITE

175 1ST STREET SOUTH, SUITE 210
ST. PETERSBURG, FL 33701
974 SF - \$37/SF - MODIFIED GROSS



BLAKEMORE KEARNEY
BKEARNEY@VECTORREALTY.COM
(727) 455-5150

VECTOR
COMMERCIAL REAL ESTATE SERVICES

SIGNATURE PLACE

974 SF - \$37/SF - MG

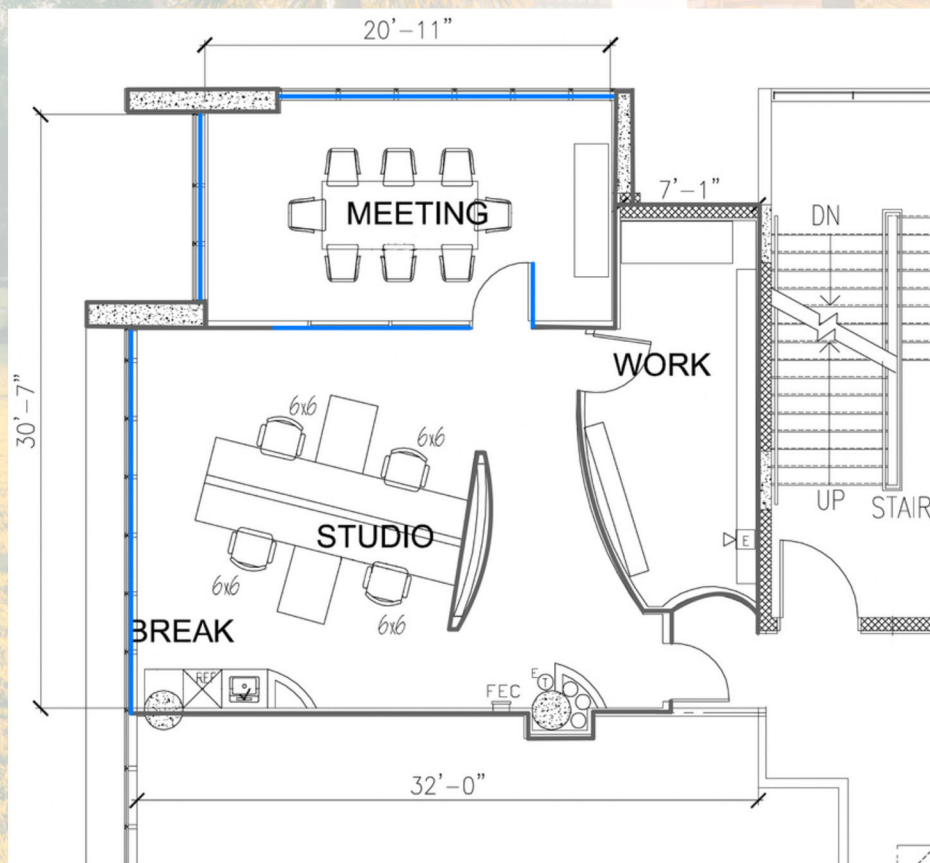
DETAILS

Modern Corner Office Suite in Signature Tower

Move-in ready 974 SF office space located in the prestigious Signature Tower, in the heart of Downtown Saint Pete. This suite is positioned on the northwest corner of the building's commercial area, featuring floor-to-ceiling windows that flood the space with natural light and highlight its sleek, modern design.

Key features include a glass-enclosed conference room, a well-appointed kitchenette, ample storage, and an efficient layout that comfortably accommodates four or more workstations. Ideal for professionals seeking a refined, functional workspace in a premier downtown location.

One reserved parking space in the on-site garage is included.



PHOTOS

