

1630 WELTON

**\$29.50 PSF
FULL SERVICE**

For leasing information contact:

Johnny Neff | 720.742.6399
jneff@premisescommercial.com

Matt Smith | 303.996.8460
msmith@premisescommercial.com



PLUG AND PLAY - HIGH TECH SPACE

10,788 TO 22,116 SF AVAILABLE

FURNISHED WITH INTERNET INCLUDED

HIGHLIGHTS & AMENITIES

- High tech space adjacent to the 16th Street mall, restaurants, entertainment, and retail.
- Furniture, internet and wi-fi included.
- Membership into Expansive coworking including use of:
 - Rooftop Terrace Lounge
 - 7th floor Mezzanine Lounge
 - Mothers Room
 - Bike Storage
- Additional conference/event space.
- Free nationwide access to 41 Expansive coworking locations.





ROOFTOP TERRACE LOUNGE

With incredible views and plenty of personality, the outdoor roof deck is a crowd favorite at 1630 Welton. Available to clients and guests during the day, it transitions to the Roof 16 event space during evenings and weekends.

[Take A 3D Virtual Tour – Roof16](#) 



INDOOR LOUNGE AREAS

In addition to the primary Expansive Lounge on the 7th floor, this location also enjoys two additional common areas with soft seating and work tables.

[Take A 3D Virtual Tour – 7th Floor Lounge](#) 



CONFERENCE/ TRAINING SPACE

Located on the 7th and 9th floors, our meeting rooms come equipped with smart TV monitors, remote controls, and polycom speaker phones.



BIKE STORAGE

Secure, lockable bike racks allow clients to safely and conveniently store bicycles for their commute.





**DIRECT & WI-FI
INTERNET INCLUDED**



EVENT SPACES AVAILABLE



CATERING AVAILABLE



ON-SITE MANAGEMENT



FURNISHED WORKSPACE



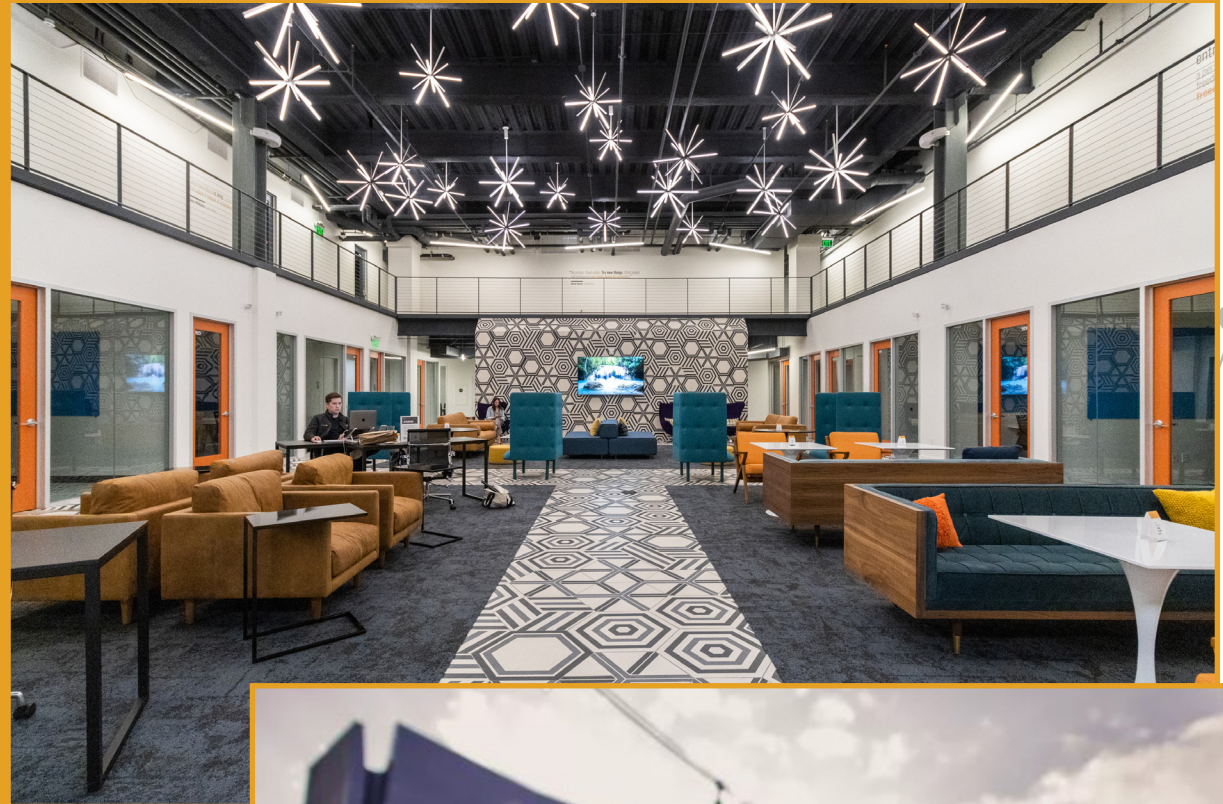
24/7 SECURE ACCESS



MOTHERS ROOM



**NATIONWIDE ACCESS TO ALL
41 EXPANSIVE LOCATIONS**



LOCATION

94

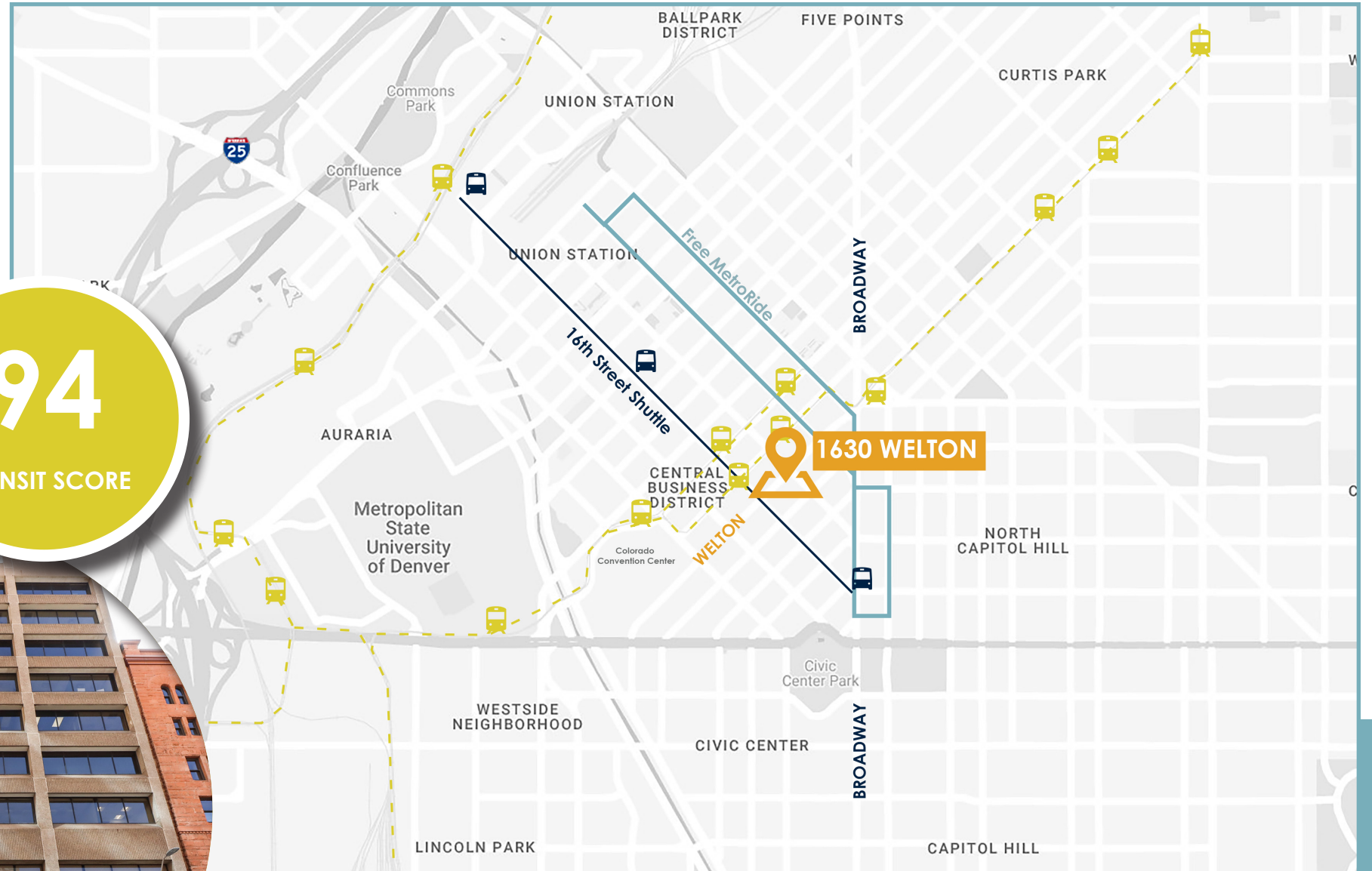
TRANSIT SCORE

97

WALK SCORE

94

BIKE SCORE

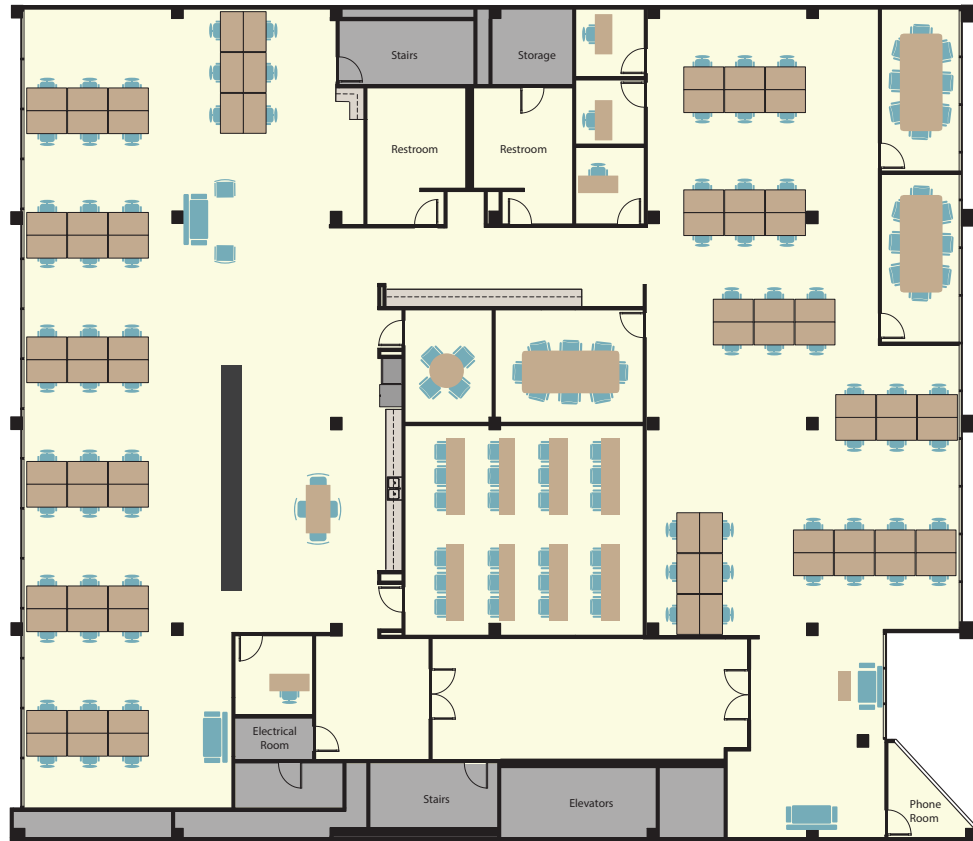


- Ideal location adjacent to the popular 16th Street pedestrian mall and free shuttle to LoDo/Union Station.
- Two blocks from the Colorado Convention Center, this location offers easy access to Downtown Denver's restaurants, hotels, and Light Rail transit.

AVAILABLE SUITES

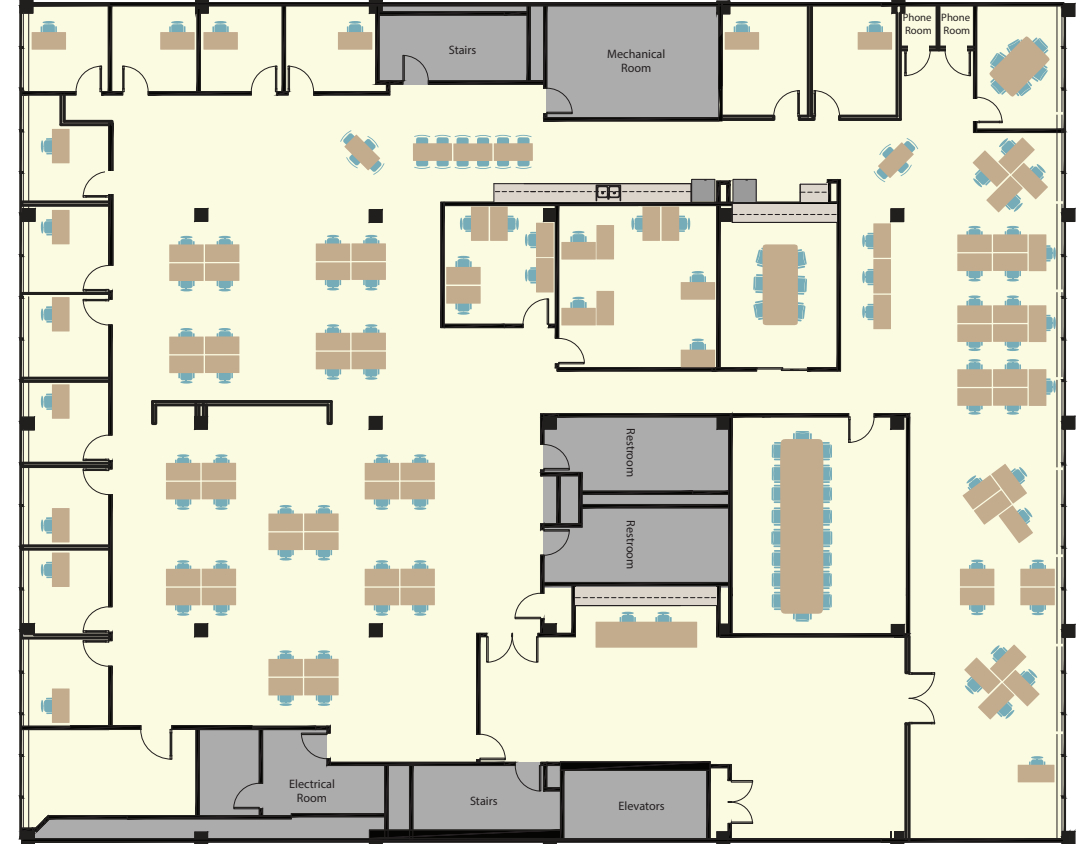
SUITE 300 - 10,788 SF

Take A 3D Virtual Tour – Suite 300 



SUITE 400 - 11,328 SF

Take A 3D Virtual Tour – Suite 400 



For leasing information contact:

Johnny Neff | 720.742.6399
jneff@premisescommercial.com

Matt Smith | 303.996.8460
msmith@premisescommercial.com

**PREMISES**
PREMISES COMMERCIAL REAL ESTATE LLC