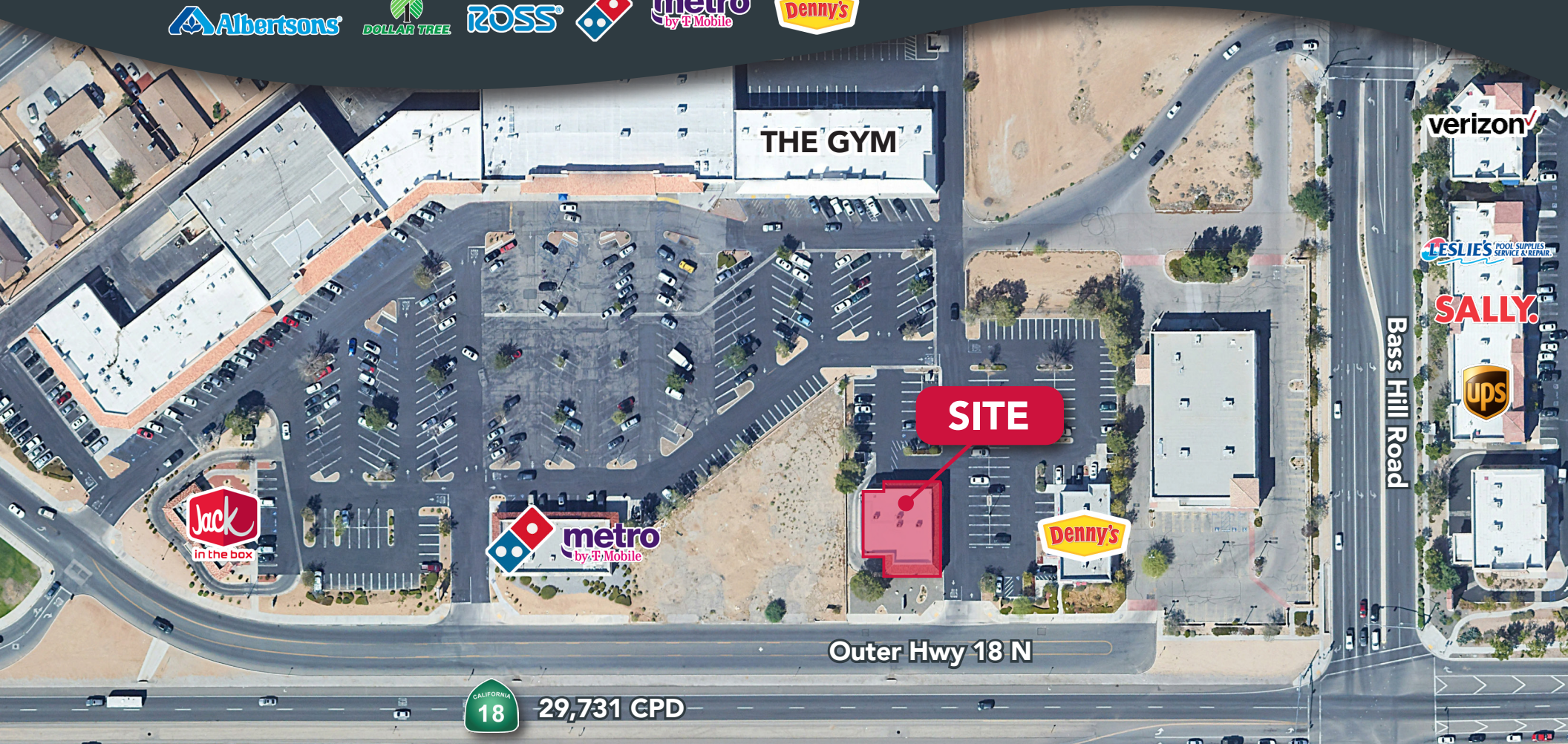


MULTI FOOD TENANT DRIVE THRU PAD FOR LEASE OR SALE

JOIN:      
     

RANCHERIAS PLAZA
20236 CA-18
APPLE VALLEY, CA



ALFREDO ARGUELLO
951.445.4522
aarguello@lee-associates.com
DRE#02015175

BRIAN BIELATOWICZ
951.445.4515
bbielatowicz@leetemecula.com
DRE# 01269887

 **LEE &
ASSOCIATES**
COMMERCIAL REAL ESTATE SERVICES

No warranty or representation has been made to the accuracy of the foregoing information. Terms of sale or lease and availability are subject to change or withdrawal without notice. Lee & Associates Commercial Real Estate Services, Inc. -Riverside. 3240 Mission Inn Avenue, Riverside, CA 92507, 951.276.3600, Corporate DRE#: 01048055 www.lee-associates.com

LOCATION DESCRIPTION




The subject property consists of a 4,020 square foot pad which is in the process of being converted into two food spaces, including a QSR drive thru. The space is divisible down to 1,800 SF. Formerly occupied by Chase Bank, the freestanding pad building is located within the larger $\pm 104,803$ square foot neighborhood center, Rancherias Plaza. Highly visible from the main Apple Valley retail corridor with 29,731 CPD and captures Highway 18 commuter and tourist traffic making this an excellent location.



PROPERTY HIGHLIGHTS

- Two-tenant food pad including a drive thru
- Strong national retail node
- 21 parking spaces with additional reciprocal parking
- Four-sided building façade signage and monument signage
- Highly visible from the main Apple Valley retail corridor with 29,731 CPD

DEMOGRAPHICS

	1 MILE	3 MILE	5 MILE
 Average Income	\$76,967	\$107,432	\$100,956
 Residential Population	5,779	41,929	93,427
 Daytime Population	3,100	21,835	51,288

Source: Regis

TRAFFIC COUNTS



7,388 CPD Bass Hill Road
29,731 CPD (18) Happy Trails Hwy

Source: Regis

RANCHERIAS PLAZA
20236 CA-18
APPLE VALLEY, CA



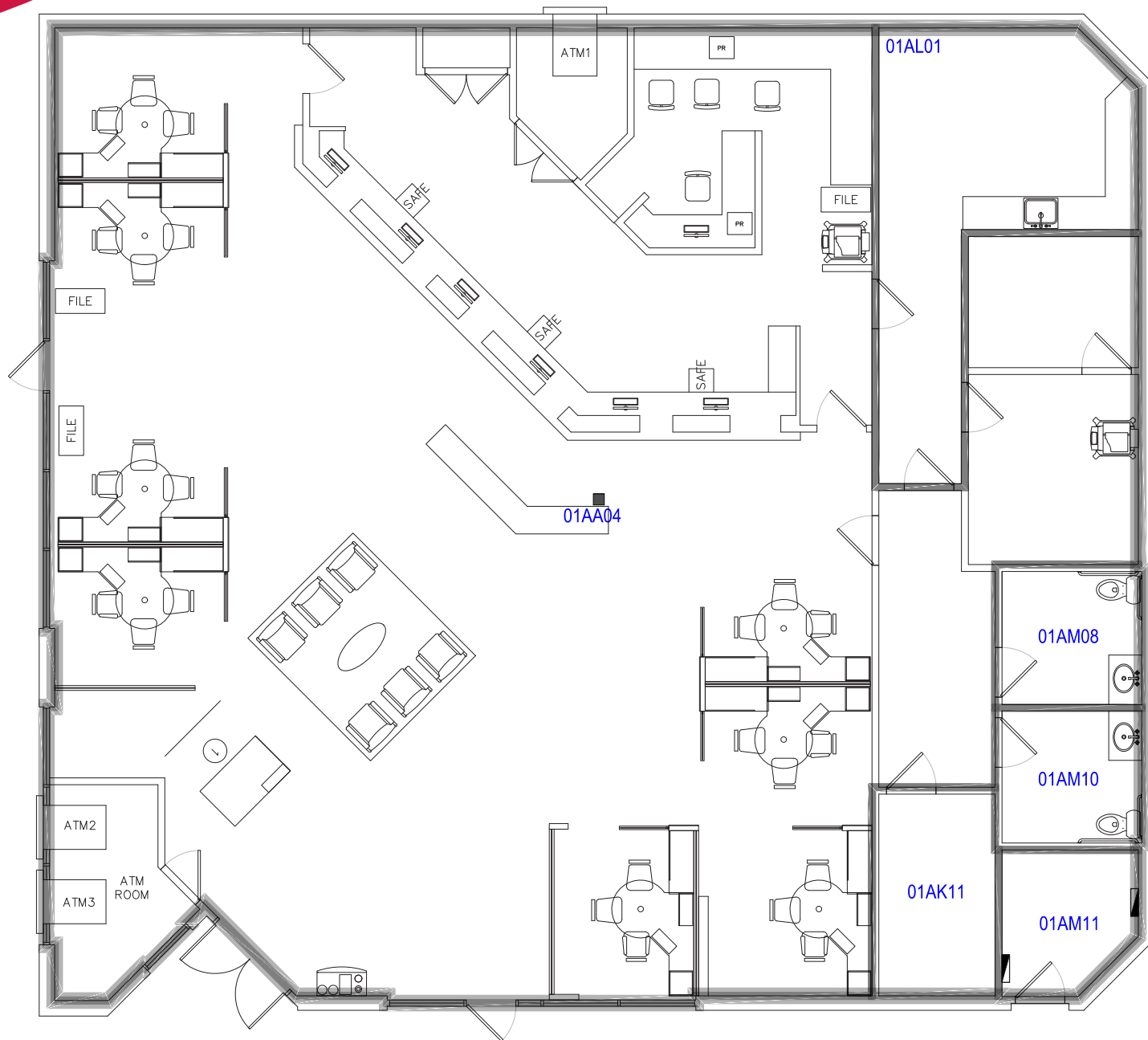
RANCHERIAS PLAZA
20236 CA-18
APPLE VALLEY, CA

Renderings



RANCHERÍAS PLAZA
20236 CA-18
APPLE VALLEY, CA

Floorplan



RANCHERIAS PLAZA

20236 CA-18
APPLE VALLEY, CA



FOR MORE INFORMATION, PLEASE CONTACT:

ALFREDO ARGUELLO

951.445.4522

aarguello@lee-associates.com

DRE#02015175

BRIAN BIELATOWICZ

951.445.4515

bbielatowicz@leetemecula.com

DRE# 01269887

Mariana
Ranchos

Roundup Way