



3260 De la Cruz Blvd

3260 De la Cruz Blvd, Santa Clara, CA 95054

Ray Heidari
Portisi LLC
,San Jose, CA 95123
rheidari@yahoo.com
(408) 314-5666

3260 De la Cruz Blvd

\$25.08 /SF/YR

3750 SQ FT Industrial Building.
Close to 101 & 87 Freeways.
Close proximity to SJC Airport. 16.4 FT Height.
Santa Clara Power,
Office HVAC,
Plenty of Parking
Floor plan is attached.
Very low NNN 0.15/SF/month
Plus 500 SF Bonus, Mezzanine...

- Close to 101 & 87 Freeways
- Close Proximity to SJC Airport
- 16.4 FT Roof Height
- Santa Clara Power
- Office HVAC
- Plenty of Parking



Rental Rate: \$25.08 /SF/YR

Property Type: Industrial

Property Subtype: Service

Rentable Building Area: 12,323 SF

Year Built: 1980

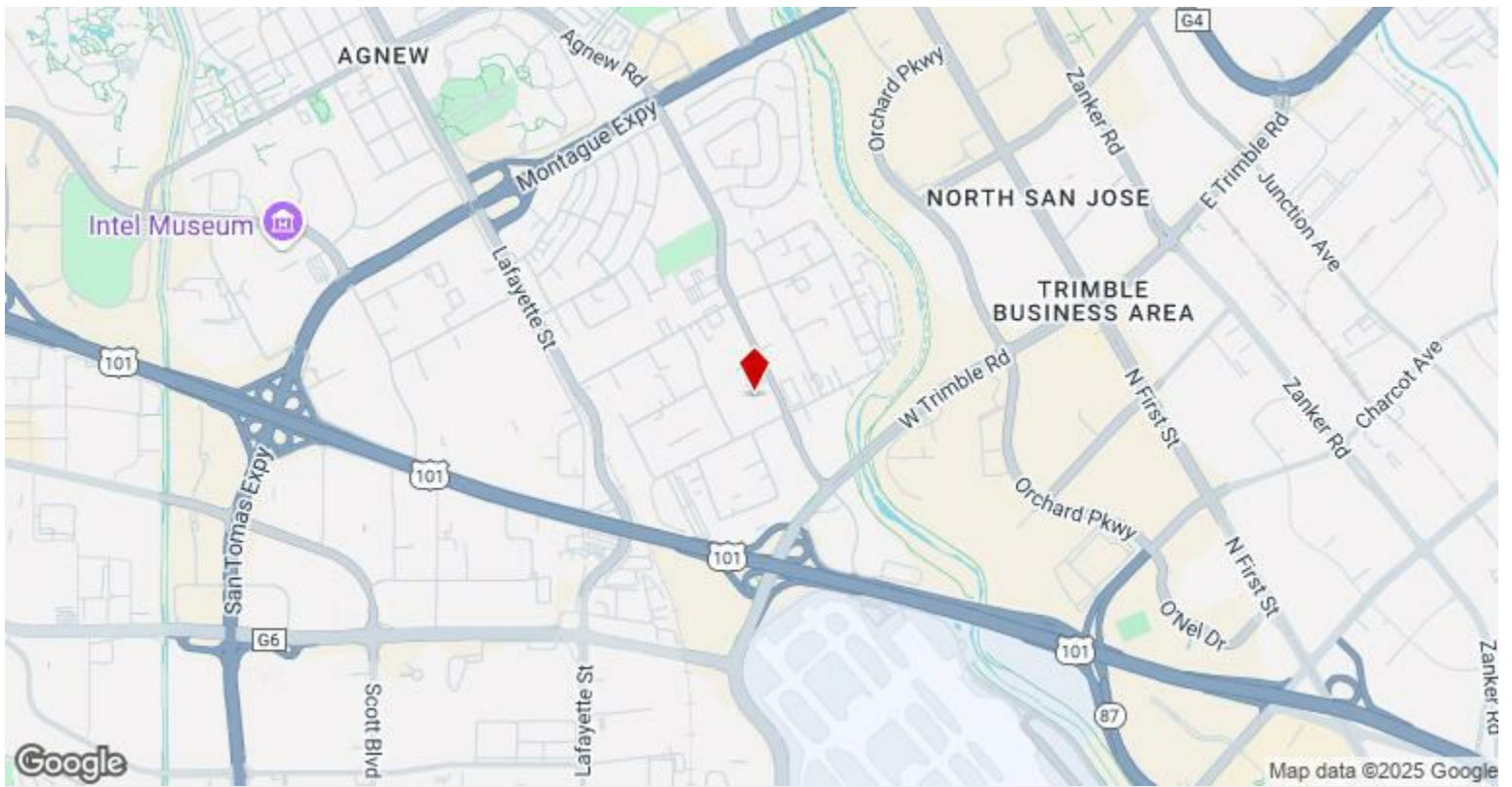
Rental Rate Mo: \$2.09 /SF/MO

1st Floor Ste 3260

Space Available	3,750 SF
Rental Rate	\$25.08 /SF/YR
Date Available	Now
Service Type	Triple Net (NNN)
Office Size	1,000 SF
Space Type	Relet
Space Use	Industrial
Lease Term	3 - 10 Years

3800 SQ FT Industrial Building. Close to 101 & 87 Freeways. Close proximity to SJC Airport. 16.4 FT Height. Santa Clara Power, Office HVAC, Plenty of Parking Floor plan is attached.

1



3260 De la Cruz Blvd, Santa Clara, CA 95054

3750 SQ FT Industrial Building.
Close to 101 & 87 Freeways.
Close proximity to SJC Airport. 16.4 FT Height.
Santa Clara Power,
Office HVAC,
Plenty of Parking
Floor plan is attached.
Very low NNN 0.15/SF/month
Plus 500 SF Bonus, Mezzanine

Property Photos



C80_5629



C80_5630

Property Photos



C80_5631



C80_5633

Property Photos



C80_5634



C80_5635

Property Photos



C80_5636

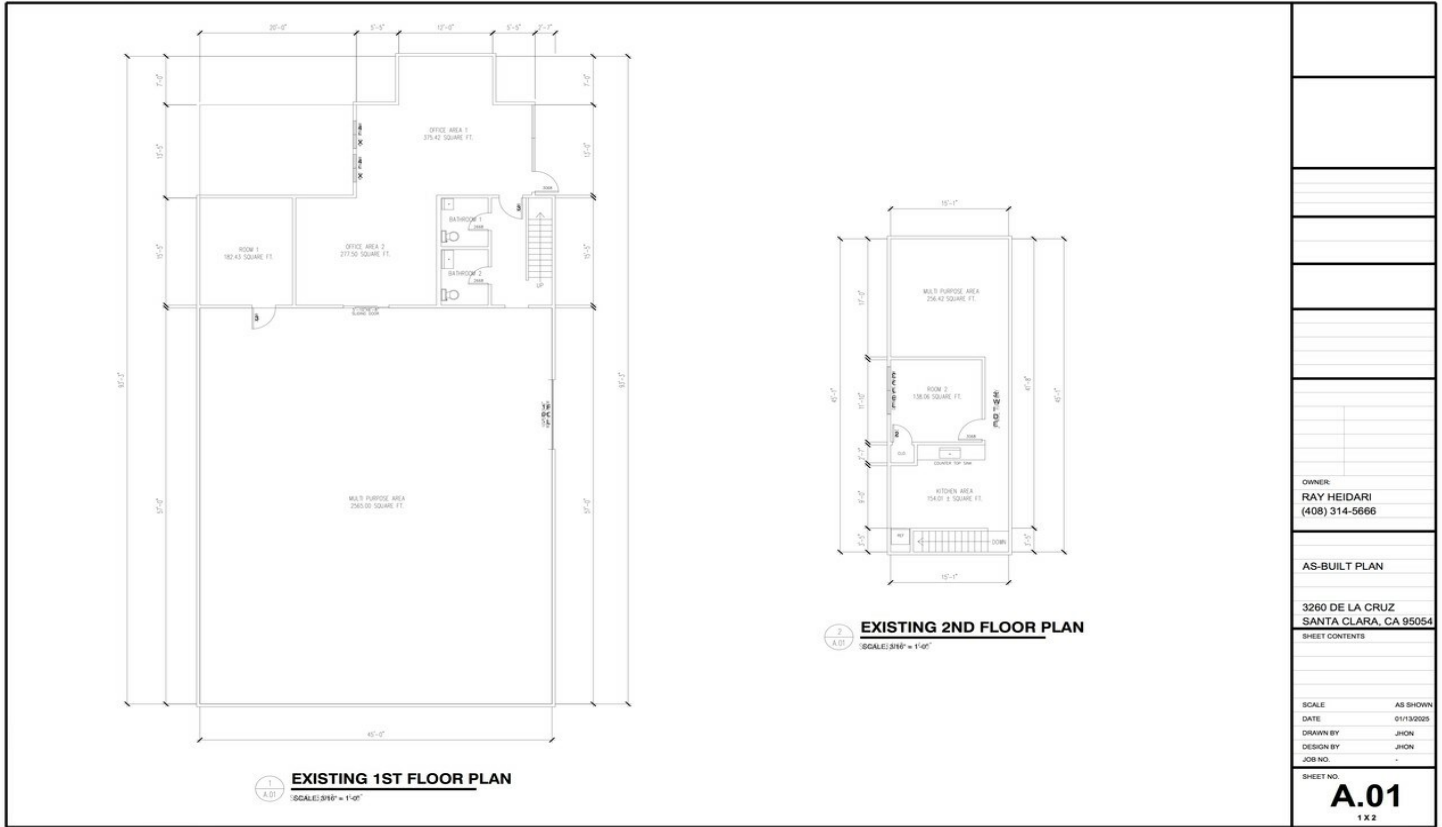


C80_5637

Property Photos



Property Photos



OWNER:
RAY HEIDARI
(408) 314-5666

AS-BUILT PLAN

3260 DE LA CRUZ
SANTA CLARA, CA 95054

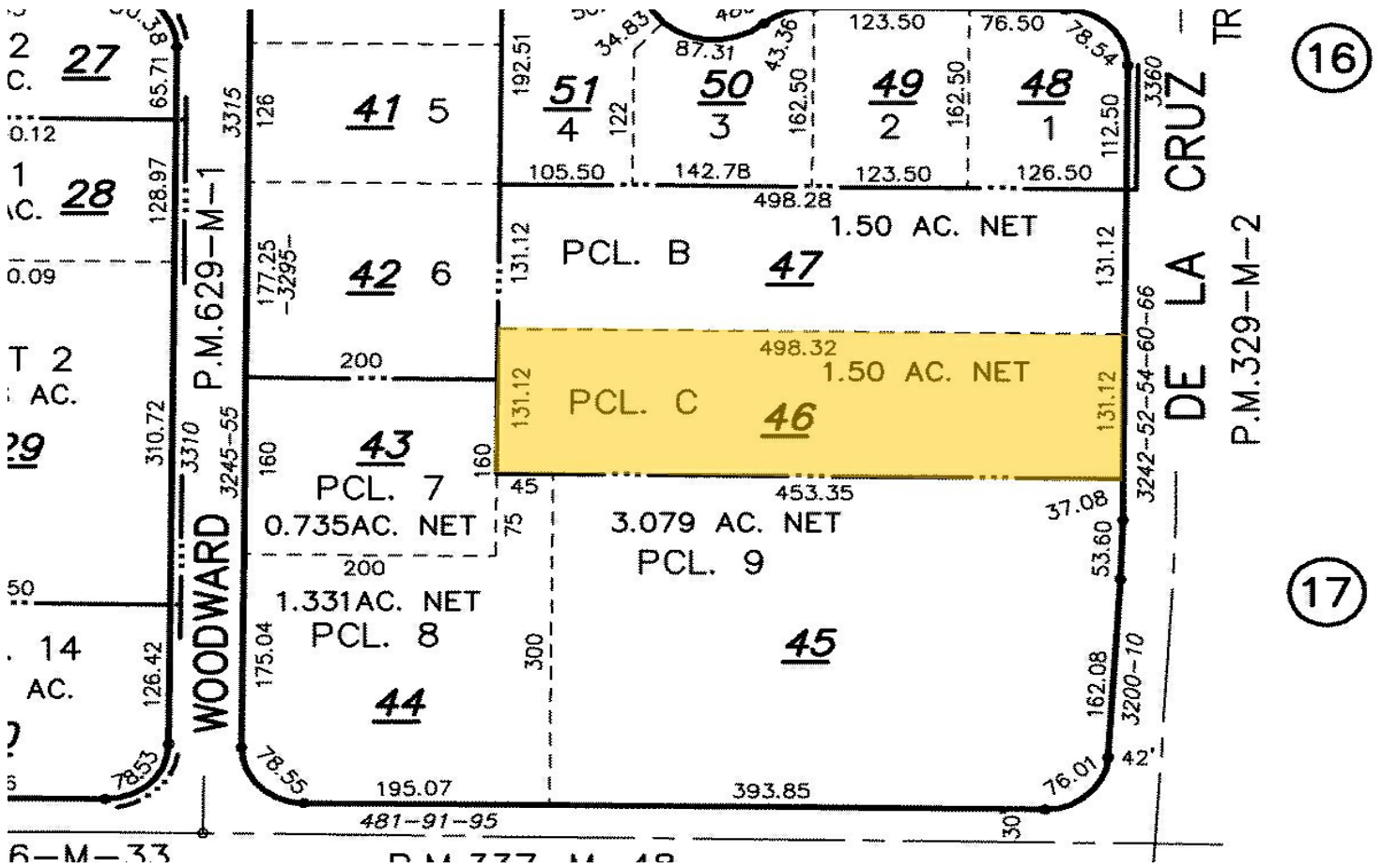
SHEET CONTENTS

SCALE AS SHOWN
DATE 01/13/2025
DRAWN BY JHON
DESIGN BY JHON
JOB NO. -

SHEET NO.
A.01
1 X 2

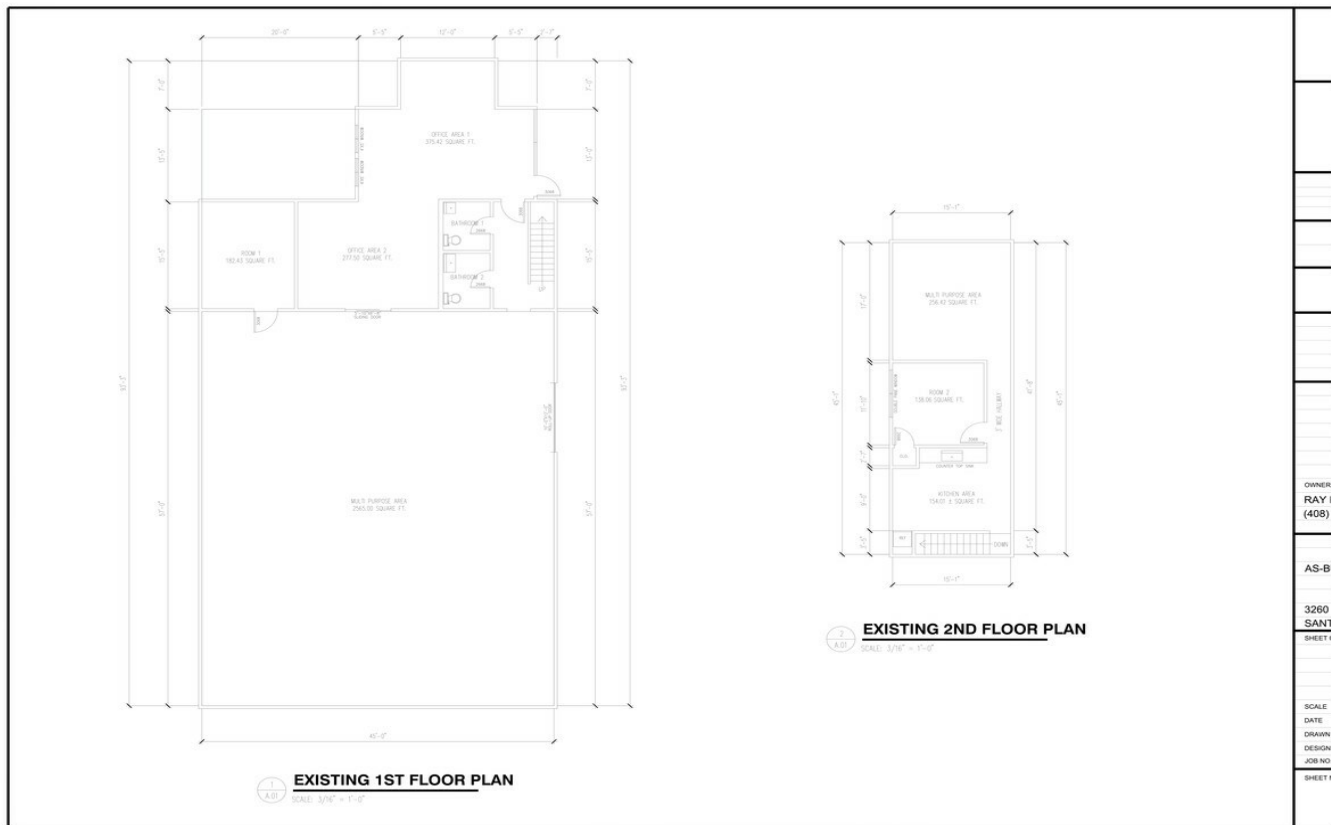


Property Photos



16

17



OWNER:
RAY I
(408)

AS-BI

3260
SANT
SHEET C

SCALE:
DATE:
DRAWN:
DESIGN:
JOB NO.
SHEET C