

FOR LEASE

**BANK BRANCH
AVAILABLE**

AVAILABLE

BANK BRANCH AVAILABLE

2055 PALM BEACH LAKES BLVD | WEST PALM BEACH, FLORIDA

Located on a 54,000 VPD Throughfare!

For More Information:

STEVE FREEDMAN

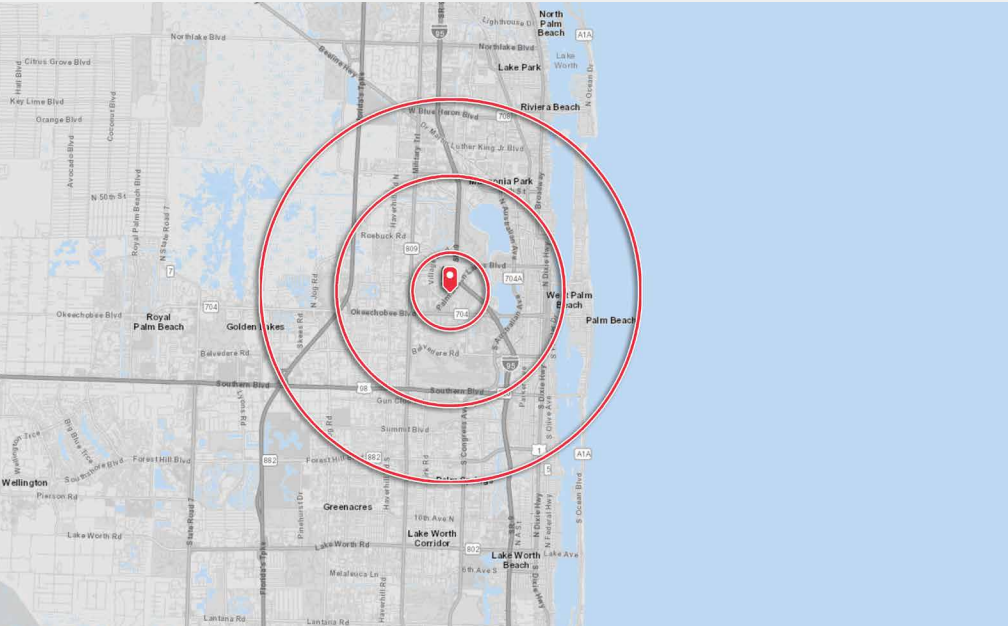
(813) 245-2479 | sfreedman@freedmanoffice.com

All information furnished regarding property offered is from sources deemed reliable but no warranty or representation is made to the accuracy or completeness thereof and same is subject to changes of price or terms, prior sales dispositions, or withdrawal without notice.

PROPERTY HIGHLIGHTS

2055 Palm Beach Lakes Blvd | West Palm Beach, FL

FOR LEASE



2025 DEMOGRAPHIC SNAPSHOT

	1-Mile	3-Mile	5-Mile
Total Population	15,561	127,594	267,901
Daytime Population	20,788	151,5005	305,631
Total Households	6,711	55,397	107,394
Average HH Income	\$78,174	\$95,602	\$109,048



LOCATION

2055 Palm Beach Lakes Boulevard
West Palm Beach, Florida 33409



AVAILABLE

Bank Branch For Lease



RATES

Call for Details



TRAFFIC COUNTS (FLDOT)

Palm Beach Lakes Blvd: 54,000 VPD ('24)
I-95: 224,496 VPD ('24)



HIGHLIGHTS

- Ample parking spaces
- Monument sign on-site
- High-daytime population
- Located on a high-volume traffic thoroughfare
- Easy access to I-95
- Less than a mile from Tanger Outlets Palm Beach

For More Information:

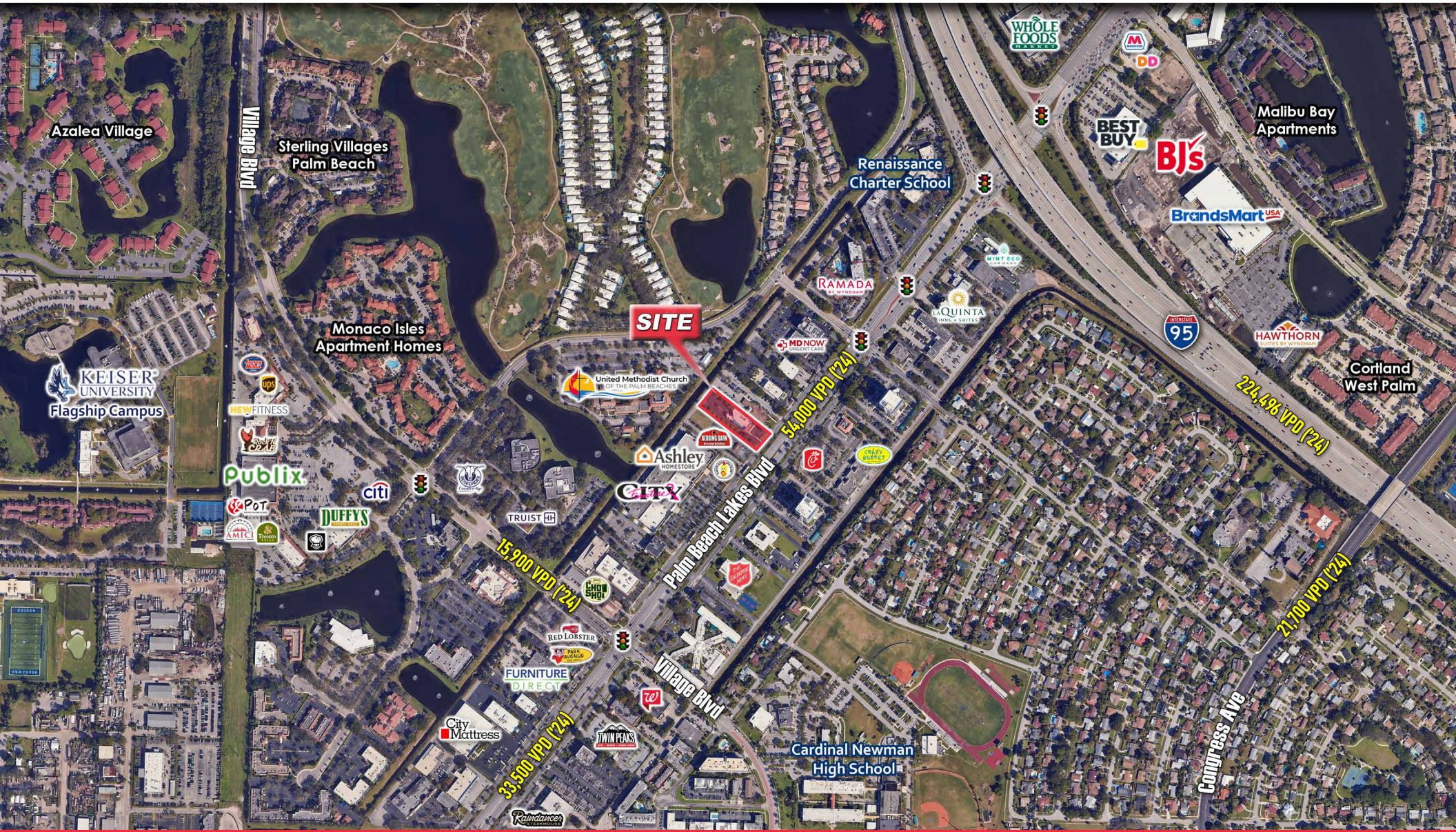
STEVE FREEDMAN | (813) 245-2479 | sfreedman@freedmanoffice.com

All information furnished regarding property offered is from sources deemed reliable but no warranty or representation is made to the accuracy or completeness thereof and same is subject to changes of price or terms, prior sales dispositions, or withdrawal without notice.

SITE AERIAL

2055 Palm Beach Lakes Blvd | West Palm Beach, FL

FOR LEASE



For More Information:

STEVE FREEDMAN | (813) 245-2479 | sfreedman@freedmanoffice.com

All information furnished regarding property offered is from sources deemed reliable but no warranty or representation is made to the accuracy or completeness thereof and same is subject to changes of price or terms, prior sales dispositions, or withdrawal without notice.

MARKET AERIAL

2055 Palm Beach Lakes Blvd | West Palm Beach, FL

FOR LEASE



For More Information:

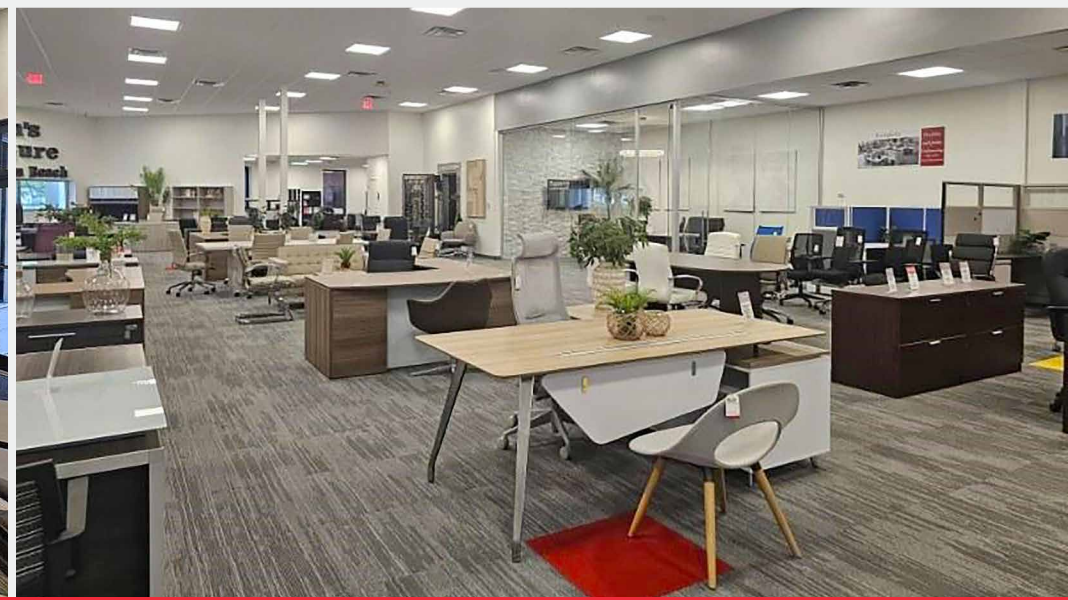
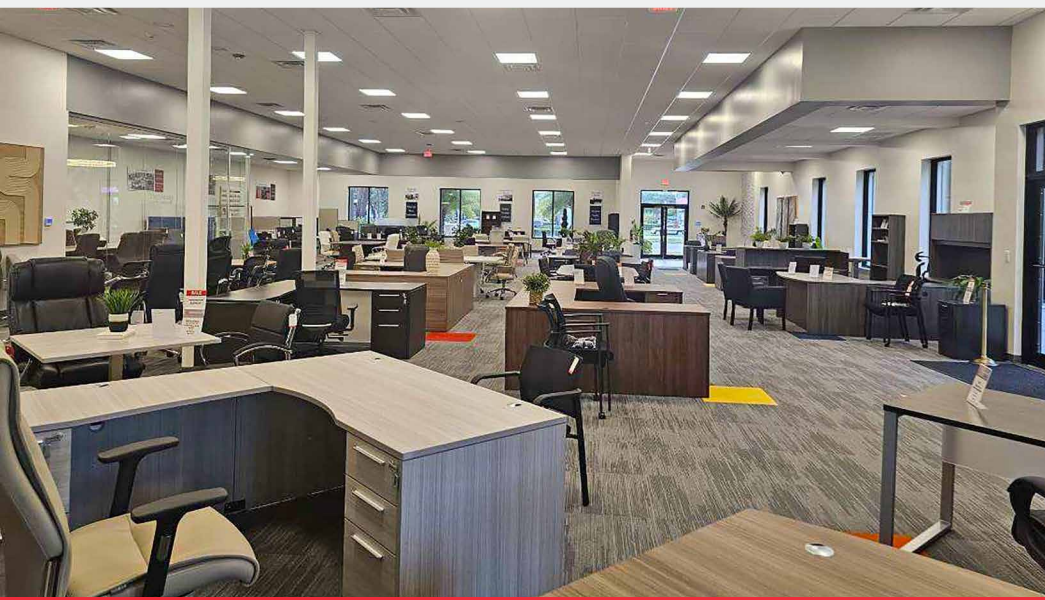
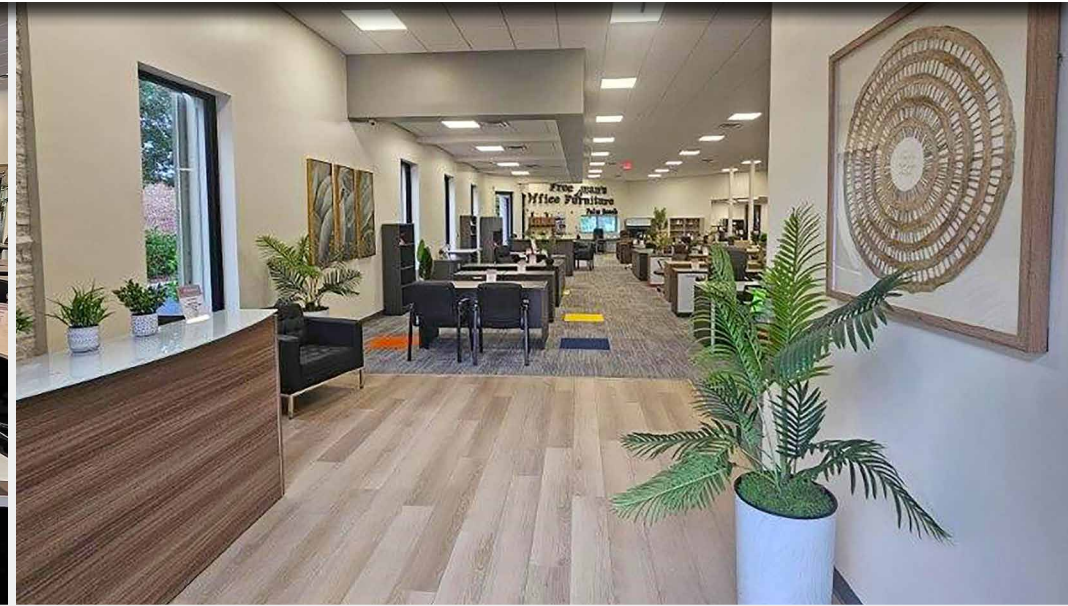
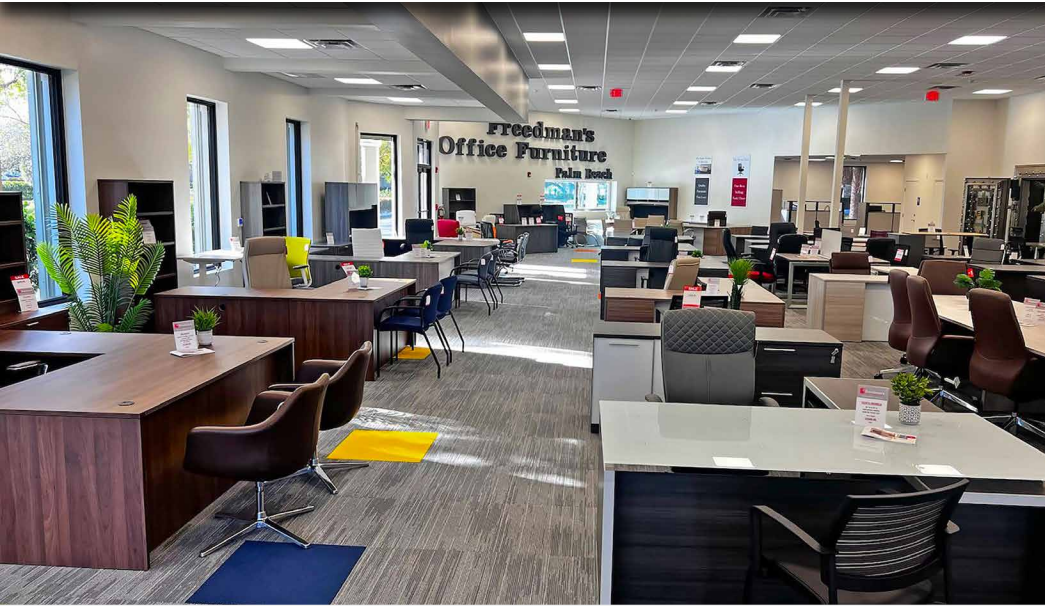
STEVE FREEDMAN | (813) 245-2479 | sfreedman@freedmanoffice.com

All information furnished regarding property offered is from sources deemed reliable but no warranty or representation is made to the accuracy or completeness thereof and same is subject to changes of price or terms, prior sales dispositions, or withdrawal without notice.

INTERIOR PHOTOS

2055 Palm Beach Lakes Blvd | West Palm Beach, FL

FOR LEASE



For More Information:

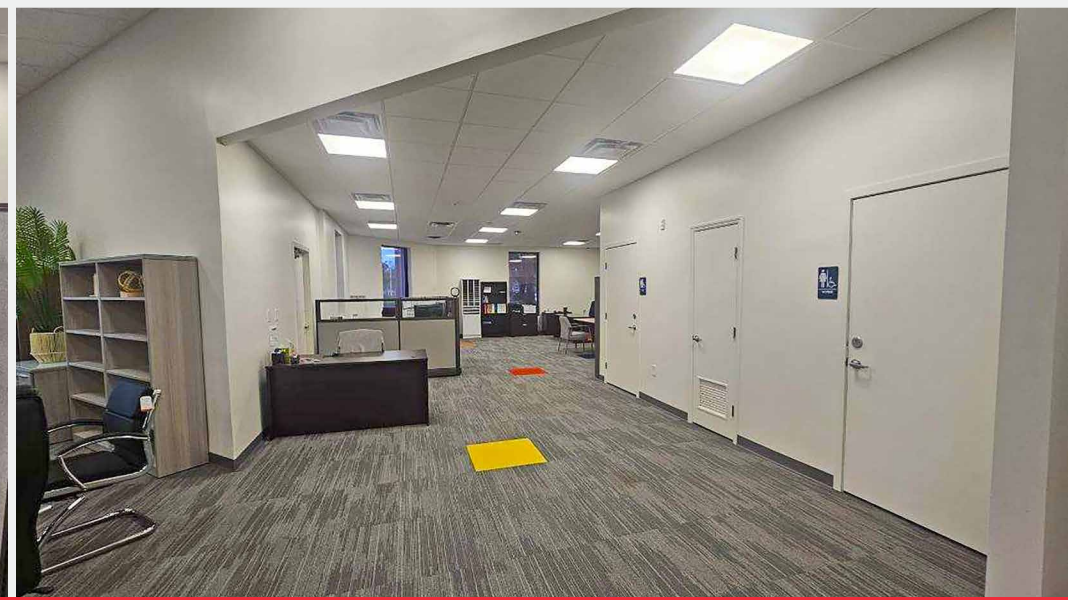
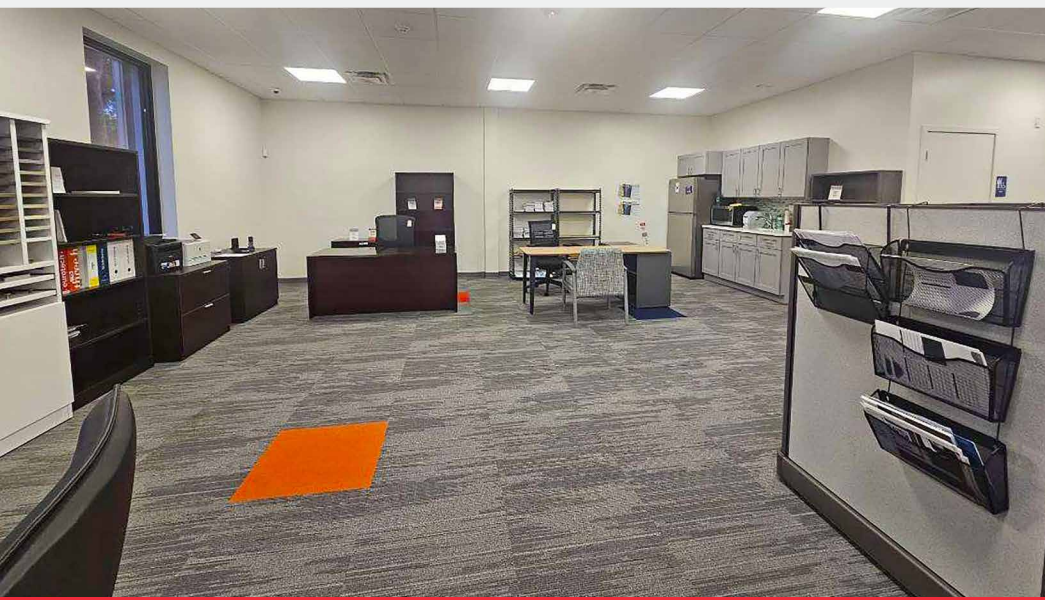
STEVE FREEDMAN | (813) 245-2479 | sfreedman@freedmanoffice.com

All information furnished regarding property offered is from sources deemed reliable but no warranty or representation is made to the accuracy or completeness thereof and same is subject to changes of price or terms, prior sales dispositions, or withdrawal without notice.

INTERIOR PHOTOS

2055 Palm Beach Lakes Blvd | West Palm Beach, FL

FOR LEASE



For More Information:

STEVE FREEDMAN | (813) 245-2479 | sfreedman@freedmanoffice.com

All information furnished regarding property offered is from sources deemed reliable but no warranty or representation is made to the accuracy or completeness thereof and same is subject to changes of price or terms, prior sales dispositions, or withdrawal without notice.

EXTERIOR PHOTOS

2055 Palm Beach Lakes Blvd | West Palm Beach, FL

FOR LEASE



For More Information:

STEVE FREEDMAN | (813) 245-2479 | sfreedman@freedmanoffice.com

All information furnished regarding property offered is from sources deemed reliable but no warranty or representation is made to the accuracy or completeness thereof and same is subject to changes of price or terms, prior sales dispositions, or withdrawal without notice.