



PRICE REDUCED!

Asking Price:

\$2.79M

CONTACT US



Joseph Gatliff

248 226 1634

joseph.gatliff@colliers.com



Kurt Weber

248 918 3205

kurt.weber@colliers.com

Colliers Detroit

400 W 4th Street, Suite 350

Royal Oak, MI 48067

colliers.com/detroit



FOR SALE

525 Redman Road Milan, MI

79,830 SF of Industrial Space Available

Property Highlights

- 79,830 Total Square Feet
- 5,696 SF of Office Space
- Facility Sits on 7.05 Acres
- Clear Height: 10' - 20'
- (7) Overhead Doors and (2) Truck Docks
- Power: 2,800 amps / 480 volts / 3-phase
- New LED Lighting Added in 2023
- Zoning: General Business/Industrial
- Parking: 166 Spots

79,830 SF INDUSTRIAL SPACE FOR SALE

Colliers

Exterior Photos



79,830 SF INDUSTRIAL SPACE FOR SALE ———



Exterior Photos

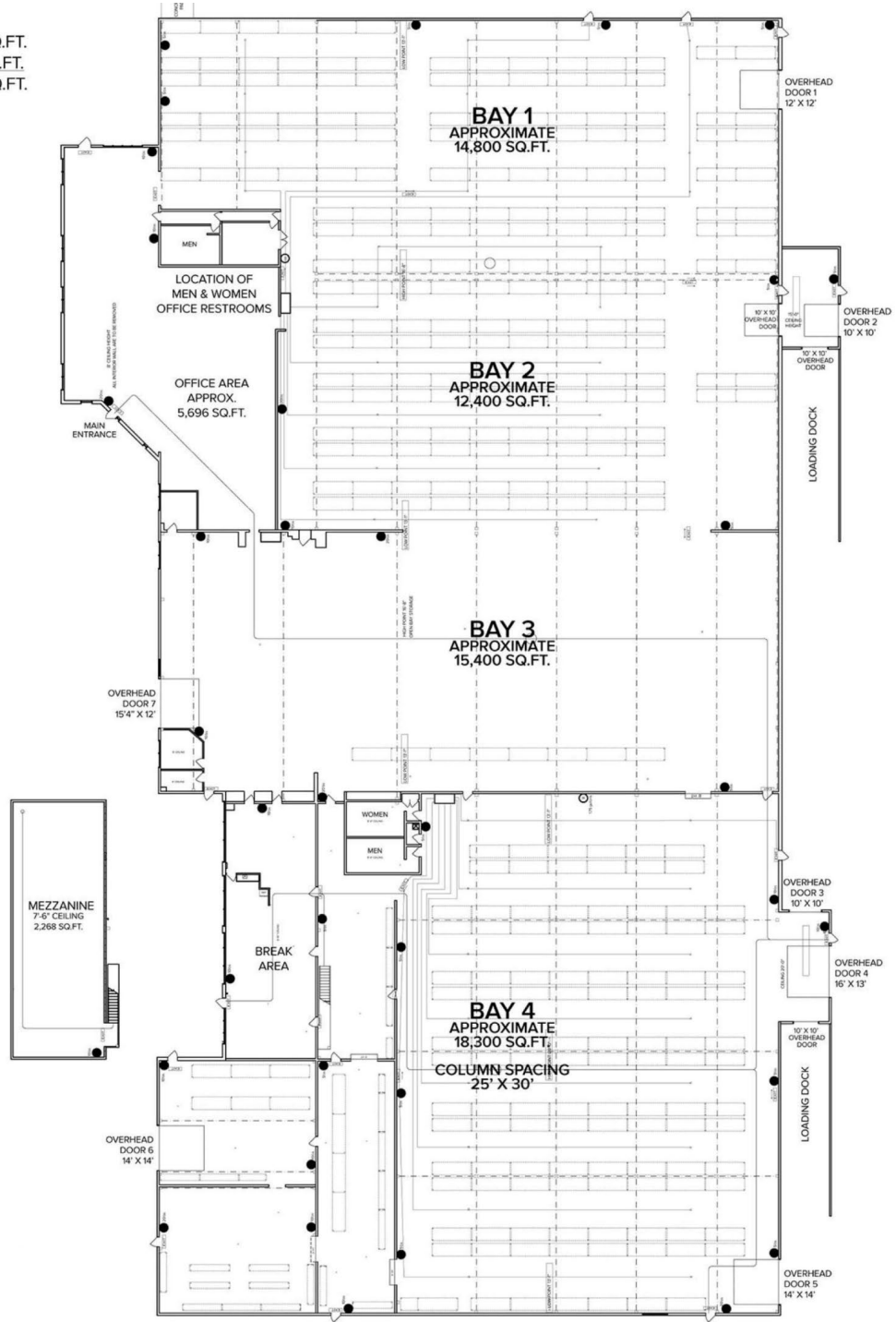


79,830 SF INDUSTRIAL SPACE FOR SALE



Floor Plan

OFFICE: 5,696 SQ.FT.
SHOP: 74,134 SQ.FT.
TOTAL: 79,830 SQ.FT.

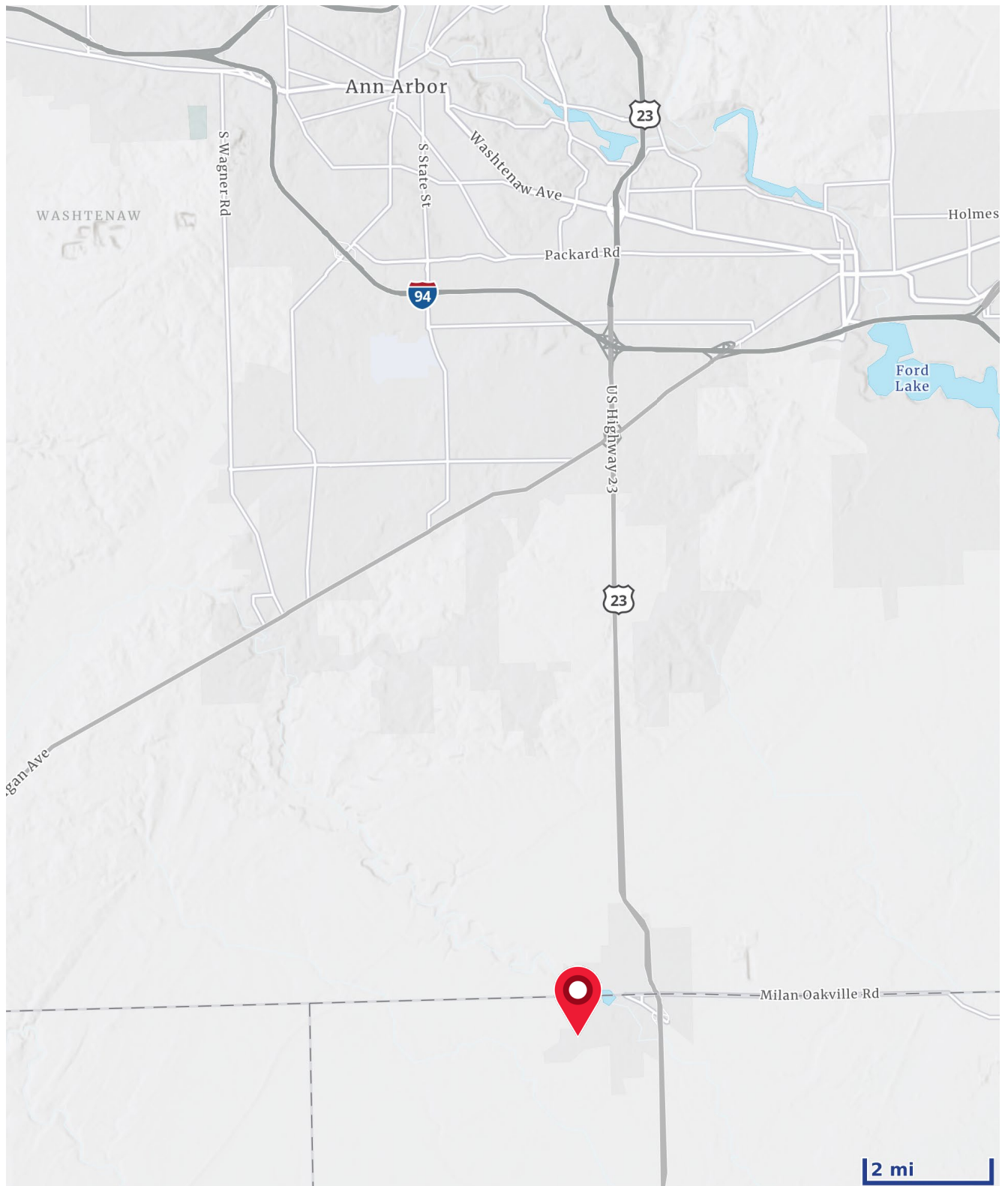


79,830 SF

79,830 SF INDUSTRIAL SPACE FOR SALE

Colliers

Location Map

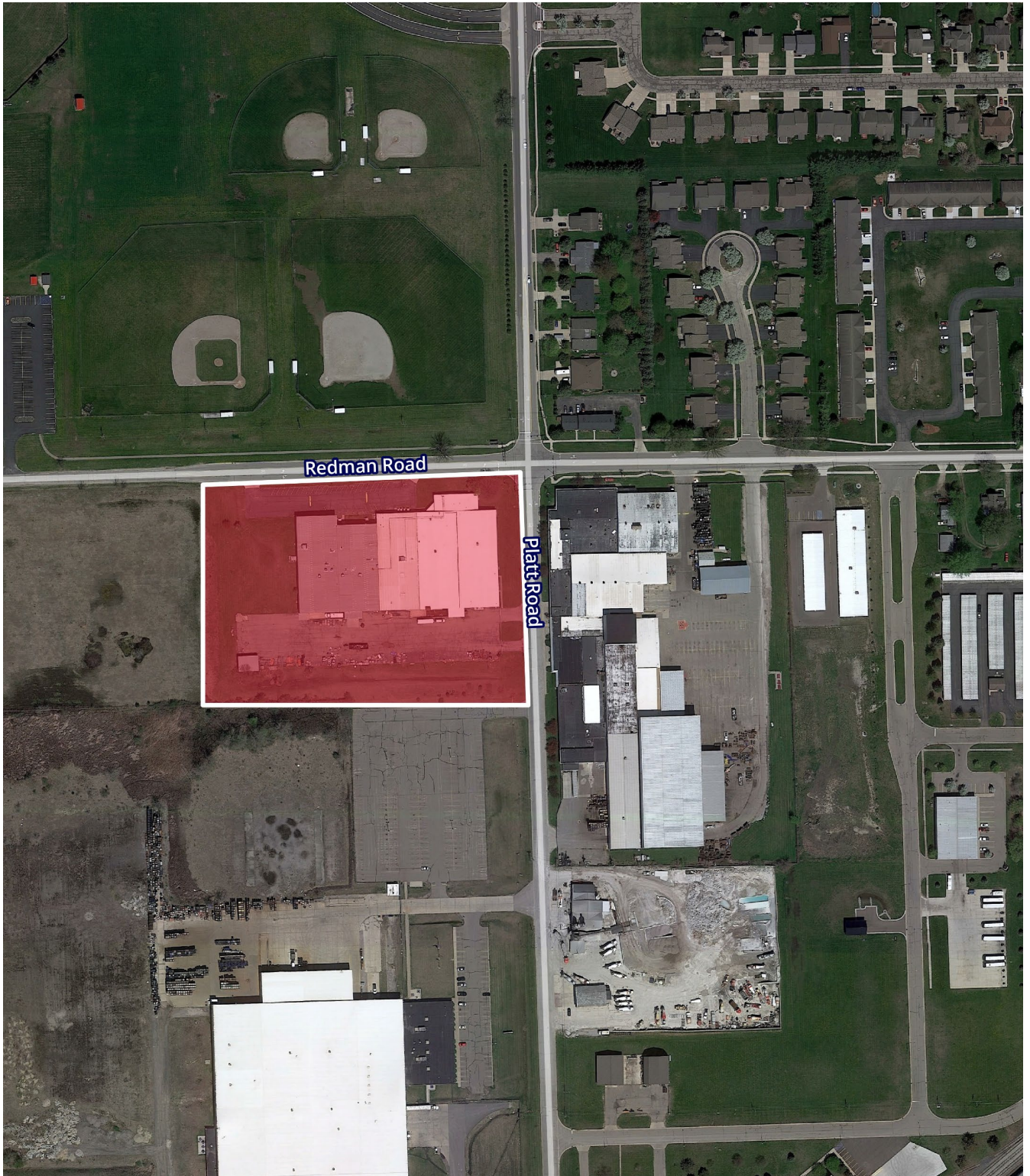


We have no reason to doubt the accuracy of information contained herein, but we cannot guarantee it. All information should be verified prior to purchase and/or lease.

79,830 SF INDUSTRIAL SPACE FOR SALE



Aerial Map



Building Specifications

Highlights

The building received a new roof in 2015 and new LED lights in 2023. The clear height of the two east bays range from 9'11" to 13'3" under the beam/truss to 15'9" under the joist and in the middle bay from 9'10" to 12' under the beam/truss. The clear height of the high bay at the west end of the building ranges from 13' to 20'. Office and Cafeteria are 100% HVAC. 480-volt buss duct. Zoned GI-Industrial District.

Gross SF: 79,830

Office SF: 5,696

Warehouse SF: 74,134

Year Built: 1962
Renovated 2023

Mezzanine: 2,268 SF

Exterior Walls: Metal Panel & Block

Floors: Reinforced Concrete

Roof: Rubber Membrane

Ceiling Height: 10' to 20'

Doors: 7 Grade Level Doors

Docks: 2 Exterior with Dock Levelers and Shelters

Financials

Sale Price \$2,790,000

Rail: No

Cranes: No

Underhook: No

Security System: Yes

Power: Three Transformers
2000 amps/480 volts/3-phase
800 amps/480 volts/3-phase
1200 amps/480 volts/3-phase

Heating: Combination of GFA units and Radiant units

Buss Duct: 780-volt

Parking: Surface

Signage: Lawn, Monument and Building

Parcel Id: 53-030-003-00

Acreage: 6.20



Joseph Gatliff
248 226 1634
joseph.gatliff@colliers.com



Kurt Weber
248 918 3205
kurt.weber@colliers.com