

COMMERCIAL OFFICE BUILDING

For Sale



Property Features

- + Well maintained building
- + Plenty of parking spaces
- + Multiple office configurations
- + Easy access to major highways, interstates and is surrounded by a variety of amenities
- + Only 20 minutes to the Tulsa Port of Catoosa and 30 minutes to Downtown Tulsa.

\$1,775,000

Sq. Ft.: 22,400

Lot Size: 2.39 Acres +/-

Contact us!

918-228-5208

Listed By - Josh Gerig

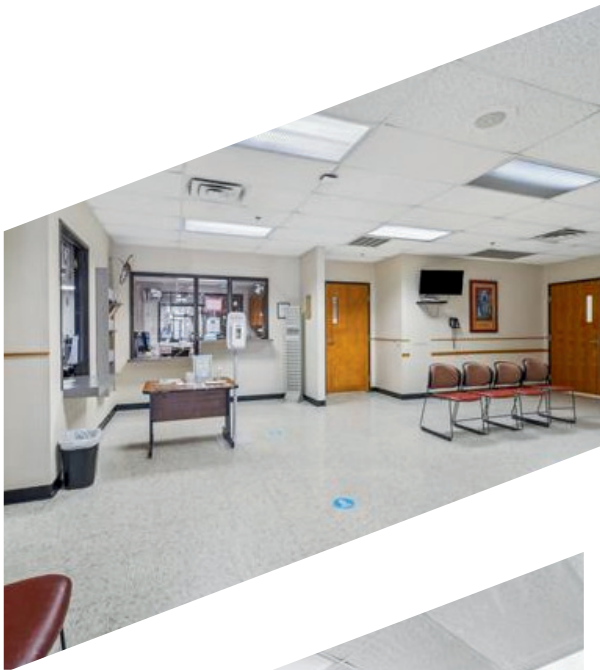
JosheGerigGroup.com

www.GerigGroup.com



GERIG GROUP
REAL ESTATE

2020 HOLLY ROAD CLAREMORE, OK 74017



Contact us!

918-228-5208

Listed By - Josh Gerig

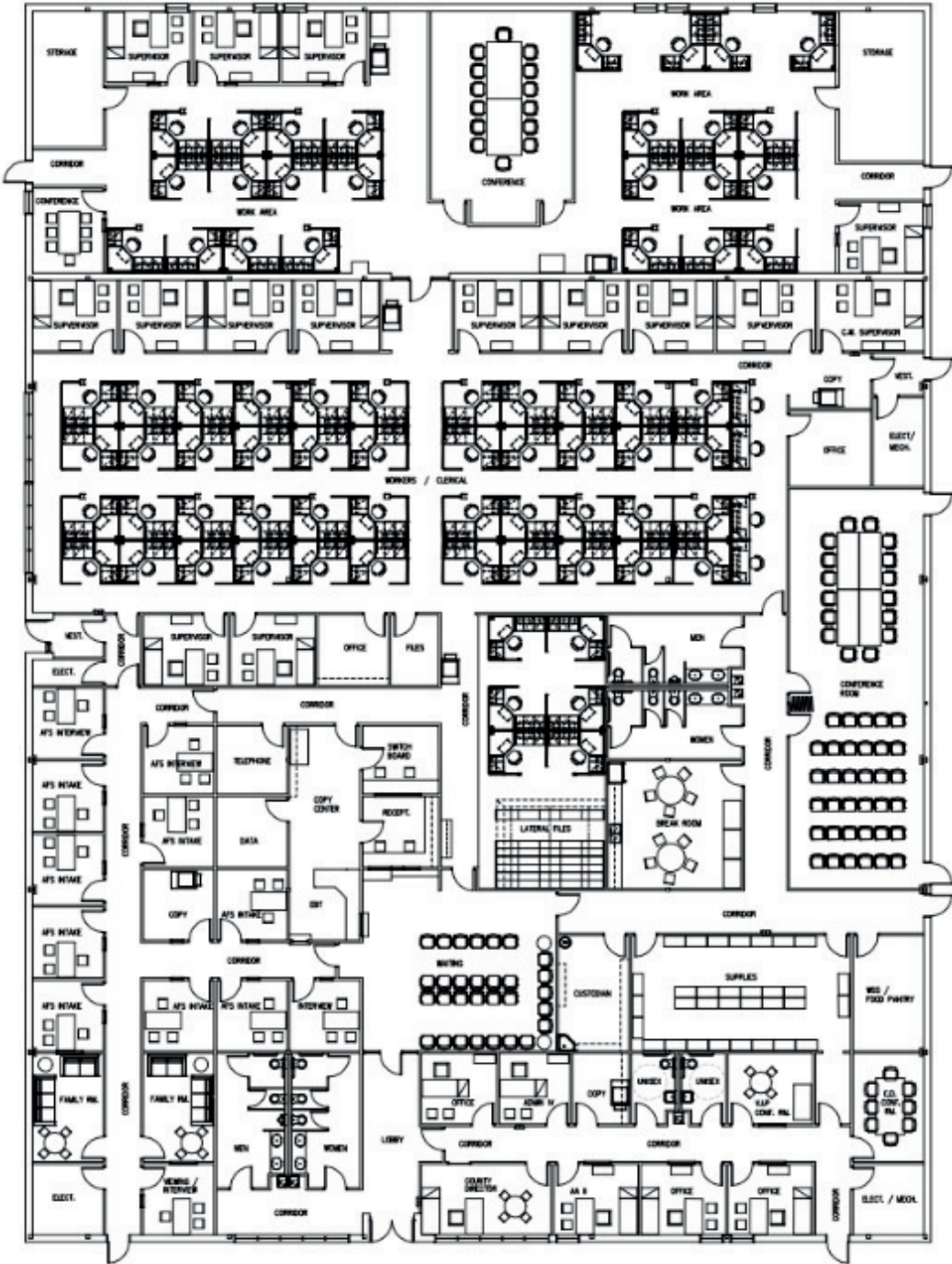
Joshe@GerigGroup.com

www.GerigGroup.com



GERIG GROUP
REAL ESTATE

2020 HOLLY ROAD CLAREMORE, OK 74017



FLOOR PLAN

Contact us!

918-228-5208

Listed By - Josh Gerig

Josh@GerigGroup.com
www.GerigGroup.com



GERIG GROUP
REAL ESTATE

2020 HOLLY ROAD CLAREMORE, OK 74017



*

**Boundaries are for visual purposes only, not to scale or survey lines

Contact us!

918-228-5208

Listed By - Josh Gerig

Joshe@GerigGroup.com

www.GerigGroup.com



GERIG GROUP
REAL ESTATE