



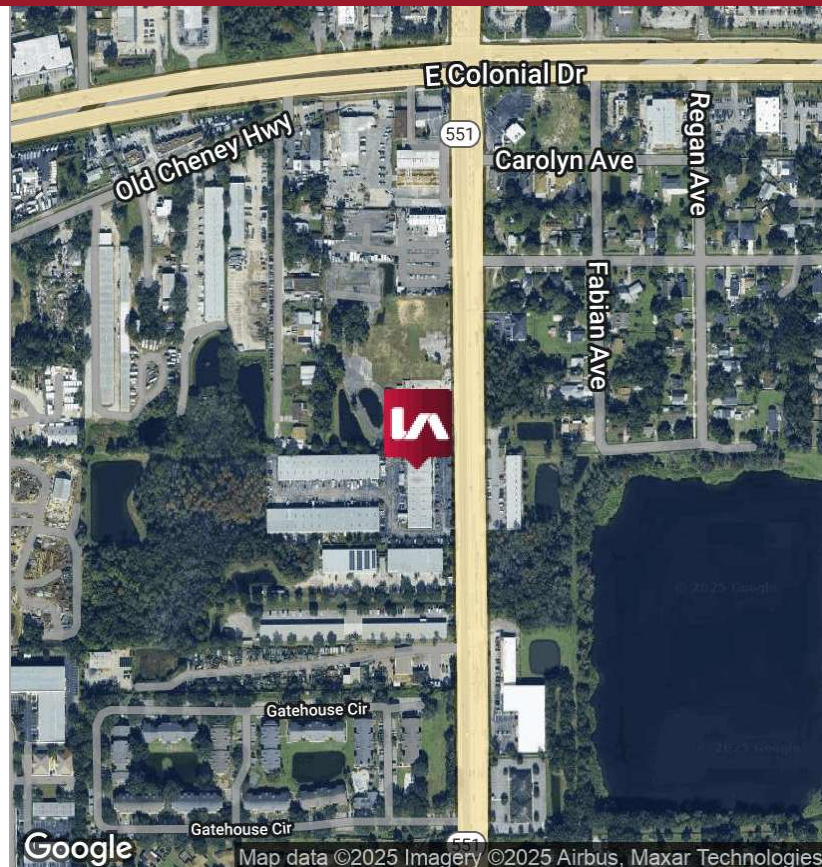
LISTING DATA

Available SF: Suite 115 | 4,000 SF
Office SF: 800 SF
Doors: Two 12' x 14' Grade Level Doors
Clear Height: 17.5' - 20.5'
Zoning: IND-1/IND-5 (Orange County)
Loading: Rear
Parking Ratio: 3/1,000 SF

Comments: Goldenrod Business Center is comprised of 3 Industrial/Flex buildings totaling 78,736 SF located in east central Orlando with convenient access to SR-50, SR-408, and SR-417. The project is professionally owned and managed making it an ideal location for years to come.

ECONOMIC DATA

Lease Rate: Call For Info



1460 N GOLDENROD ROAD | ORLANDO, FL 32807

FOR LEASE

