



LaVilla
316 & 320 Jefferson St. \$399,000
Jacksonville, FL 32202

 **LoopNet® Listing ID #30971185**

Watson Commercial Realty Inc.
4685 Sunbeam Road, Suite 4
Jacksonville, FL 32257
904-200-1030
Will Messer



WILL MESSER
Commercial Sales Associate

Mobile: **904-200-1030**
Email: **wmesser@watsoncommercial.com**
Web: **WatsonCommercial.com**

Leading
REAL ESTATE
COMPANIES
OF THE WORLD



316 & 320 Jefferson St., Jacksonville, FL 32202

Impeccable Location

- Location

- I-95 = .5 mile/2 mins
- I-10 = 2 mile/3 mins
- FSCJ = .4 mile/1 min
- Whole Foods* = .5 mile/1 min
- Brooklyn = .5 mile/1 min
- San Marco = 1 mile/3 mins
- Everbank Stadium = 2 miles/5 mins
- Riverside = 1 miles/3 mins



* Proposed





316 & 320 Jefferson St., Jacksonville, FL 32202

Property Statistics

| | | |
|----------------------|-----------------------|-------------------------------|
| Lot Size | .16-acre | |
| Zoning | CRO | Commercial Residential Office |
| | <u>Square Footage</u> | <u>Year Built</u> |
| 316 N. Jefferson St. | 1,738 | 1906 |
| 320 N. Jefferson St. | 1,738 | 1906 |
| Total | 3,476 | |



- 316 N. Jefferson St.
 - RE #: 074690-0050
- 320 N. Jefferson St.
 - RE #: 074690-0070

316 & 320 Jefferson St., Jacksonville, FL 32202

Jacksonville's Architectural Heritage



Mark Krancer

LV-15

316 & 320 JEFFERSON STREET
DATE: ca. 1901-1903

These two similar buildings were constructed within two years after the 1901 fire. Without their burst of Queen Anne exuberance on the southeast corner, each of these structures could be deemed a rather ordinary frame dwelling. But these angled two-tier balconies have produced charming façades. The Eastlake ornaments, the octagonal cupolas, and the decorative shingles in the gables create a fanciful character for these otherwise modest houses, demonstrating the persuasive influence of the Queen Anne style upon all classes of housing around the turn of the century.



WILL MESSER

Commercial Sales Associate

Mobile: **904-200-1030**

Email: **wmesser@watsoncommercial.com**

Web: **WatsonCommercial.com**

Leading[®]
REAL ESTATE
COMPANIES
OF THE WORLD

316 & 320 Jefferson St., Jacksonville, FL 32202

Architectural Features



WILL MESSER

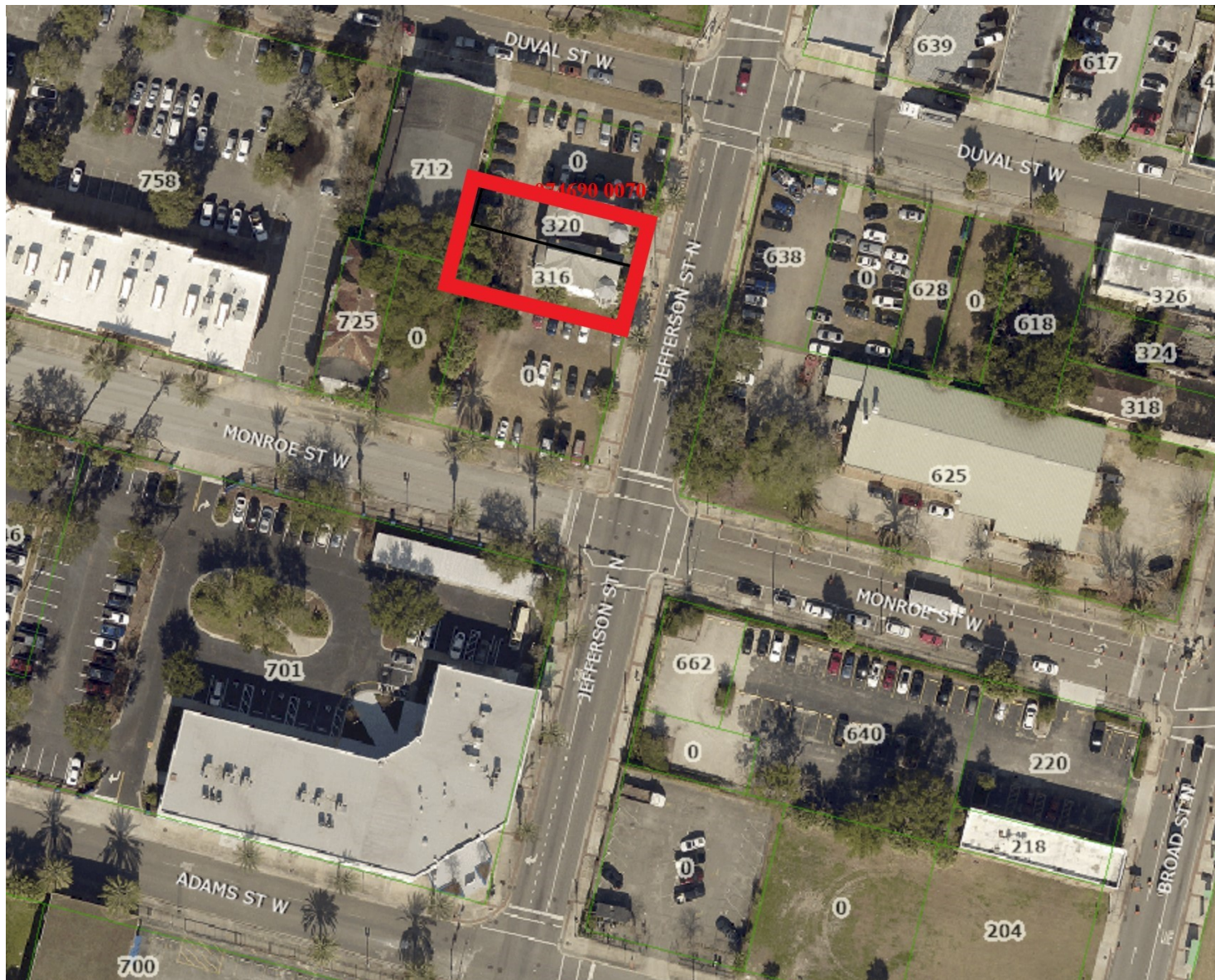
Commercial Sales Associate

Mobile: **904-200-1030**

Email: **wmesser@watsoncommercial.com**

Web: **WatsonCommercial.com**





WILL MESSER
Commercial Sales Associate

Mobile: **904-200-1030**
Email: **wmesser@watsoncommercial.com**
Web: **WatsonCommercial.com**

Leading
REAL ESTATE
COMPANIES
OF THE WORLD

316 & 320 Jefferson St., Jacksonville, FL 32202

Aerial



WILL MESSER

Commercial Sales Associate

Mobile: **904-200-1030**

Email: **wmesser@watsoncommercial.com**

Web: **WatsonCommercial.com**

Leading
REAL ESTATE
COMPANIES
OF THE WORLD



| | |
|----------------------|---|
| Property Subtypes: | Duplex, Professional Office, Commercial |
| Building Size (RSF): | 5,300 SF |
| Gross Land Area: | .16- Acre |
| Sale Price: | \$399,000 |

Demographics—CoStar, Census

| Proximity: | 1 mile | 3 miles | 5 miles |
|-------------------|----------|----------|----------|
| Total Population: | 12,638 | 92,447 | 211,505 |
| Average Age: | 43.1 | 38.4 | 38.2 |
| Households: | 4,943 | 38,705 | 88,040 |
| 2022 Avg. HH Inc. | \$35,772 | \$36,971 | \$62,443 |

 LoopNet® Listing ID #30971185



WILL MESSER
Commercial Sales Associate

Mobile: **904-200-1030**
Email: **wmesser@watsoncommercial.com**
Web: **WatsonCommercial.com**

