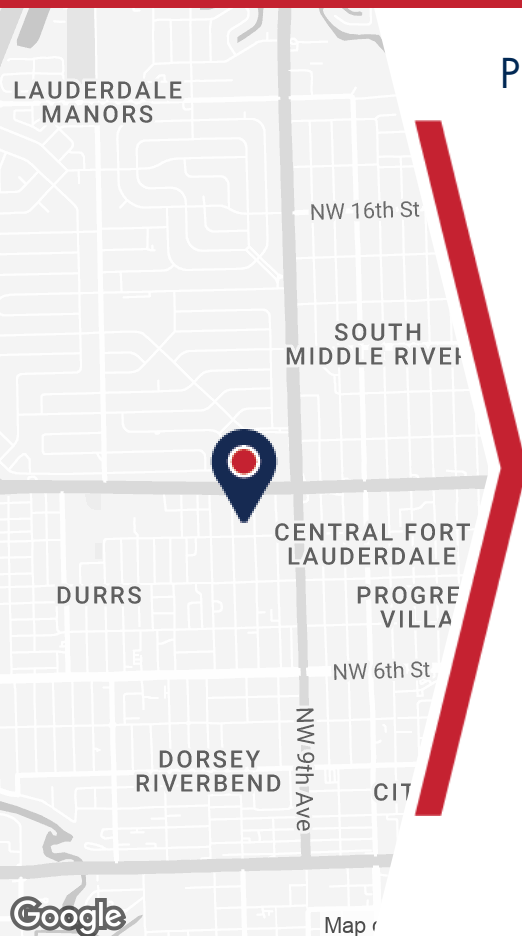


900 NW 11TH AVE

FORT LAUDERDALE, FL



## PROPERTY DETAILS

- 8,155 SF of Rentable Space
- 600 SF of Office
- 24' Clear Height
- Mezzanine storage at no additional cost
- 3-Phase Power
- 2 Dock-High Doors
- 1 Grade-Level Door
- Zoning: B-3, Fort Lauderdale

## ABOUT PROPERTY



### PRICE

\$19.00 SF/Yr (MG)



### YEAR BUILT

1981



### AVAILABLE SF

8,155



### PARKING

Surface



### LOCATION

Fort Lauderdale, FL

For more information:

**Jordan Beck**

954.652.2033 | [Jbeck@Bergercommercial.Com](mailto:Jbeck@Bergercommercial.Com)  
[bergercommercial.com](http://bergercommercial.com)

**Calder Alfano**

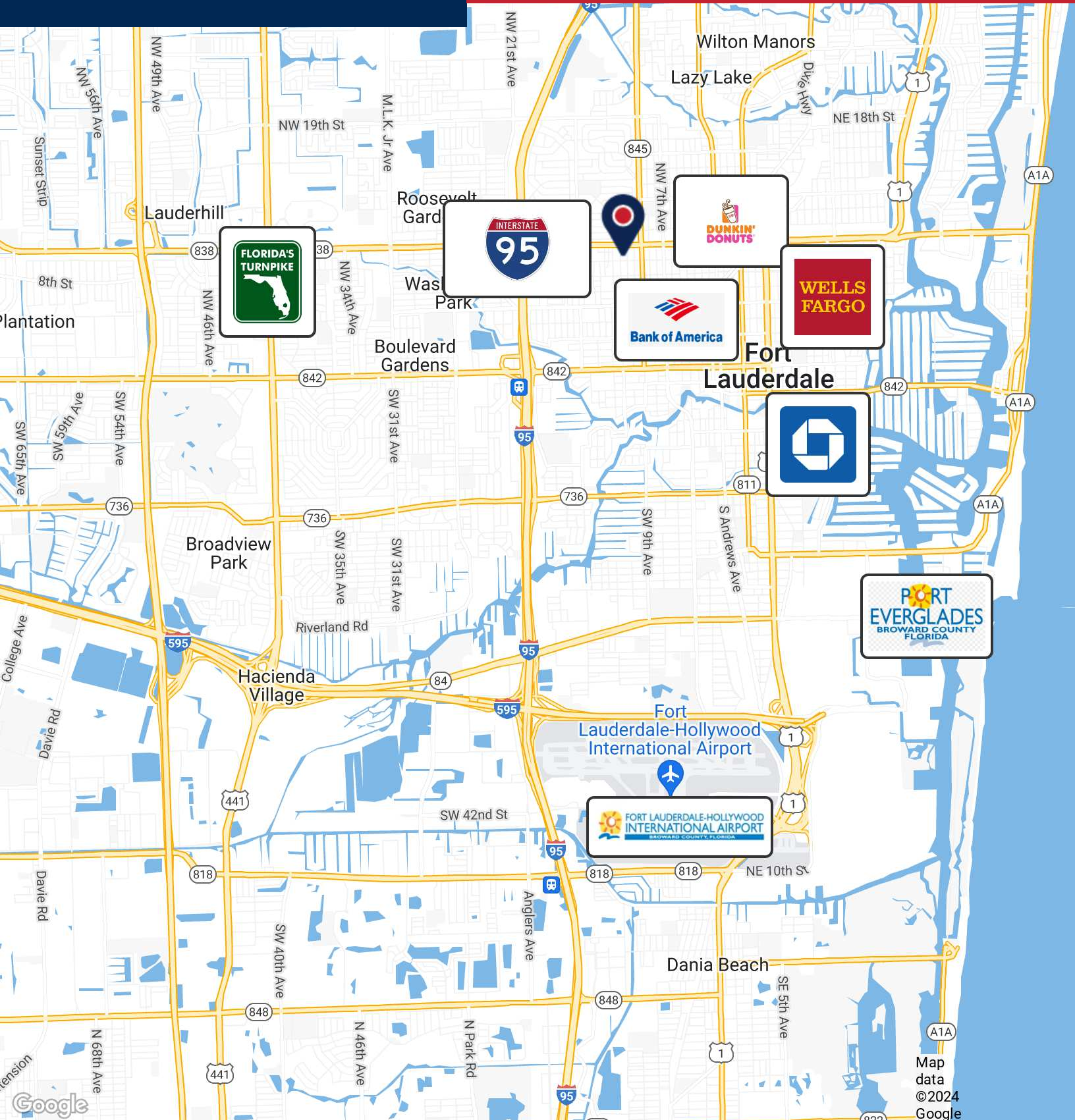
954.652.2041 | [Calfano@Bergercommercial.Com](mailto:Calfano@Bergercommercial.Com)



COMMERCIAL BROKERAGE AND PROPERTY MANAGEMENT

900 NW 11TH AVE

RETAILER MAP



For more information:

**Jordan Beck**

954.652.2033 | [jbeck@Bergercommercial.com](mailto:jbeck@Bergercommercial.com)  
bergercommercial.com

**Calder Alfano**

954.652.2041 | [Calfano@Bergercommercial.com](mailto:Calfano@Bergercommercial.com)



COMMERCIAL BROKERAGE AND PROPERTY MANAGEMENT

Information furnished regarding this property is from sources deemed reliable, but no warranty or representation as to the accuracy thereof and it is submitted subject to errors, omissions, prior sale, lease or withdrawal without prior notice.

900 NW 11TH AVE

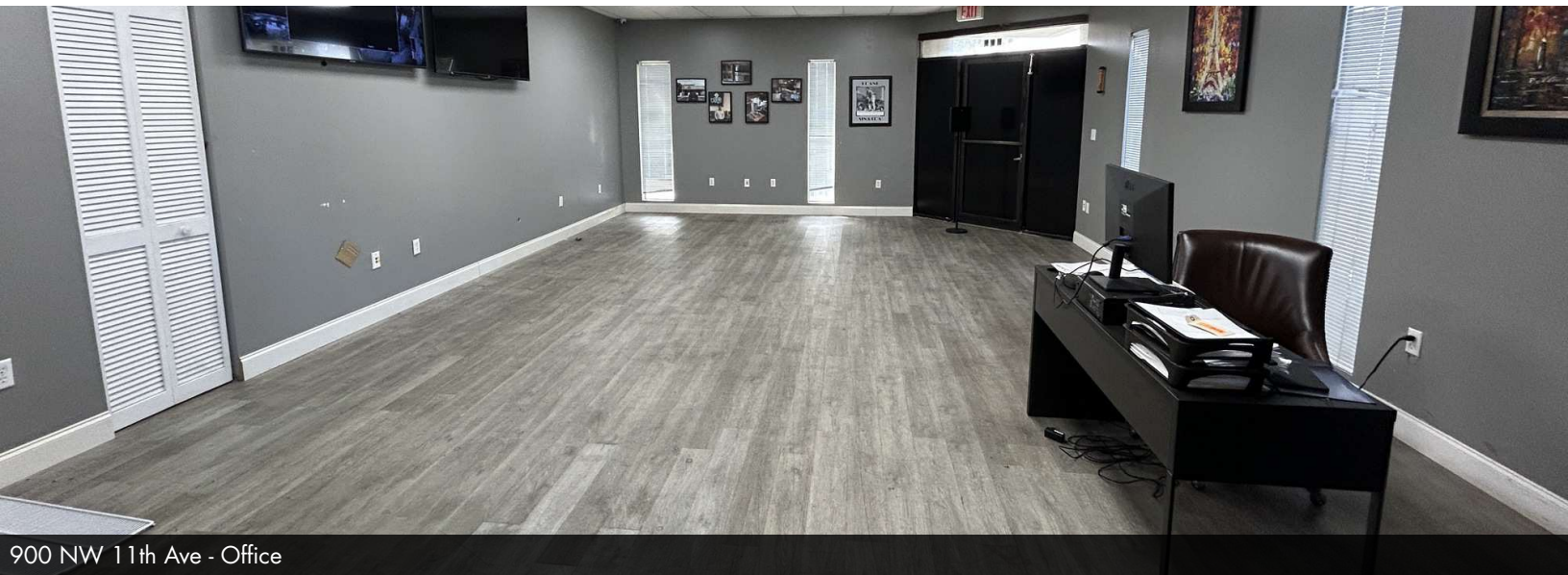
ADDITIONAL PHOTOS



900 NW 11th Ave - Exterior



900 NW 11th Ave - Mezzanine



900 NW 11th Ave - Office

For more information:

**Jordan Beck**

954.652.2033 | [Jbeck@Bergercommercial.Com](mailto:Jbeck@Bergercommercial.Com)  
[bergercommercial.com](http://bergercommercial.com)

**Calder Alfano**

954.652.2041 | [Calfano@Bergercommercial.Com](mailto:Calfano@Bergercommercial.Com)



*Information furnished regarding this property is from sources deemed reliable, but no warranty or representation as to the accuracy thereof and it is submitted subject to errors, omissions, prior sale, lease or withdrawal without prior notice.*