

Warehouse Space for Lease

3530 E Ellsworth Rd, Ann Arbor, MI 48108



Listing ID: 30779010
 Status: Active
 Property Type: Industrial For Lease
 Industrial Type: Light Industrial, Manufacturing
 Contiguous Space: 12,750 - 27,500 SF
 Total Available: 27,500 SF
 Lease Rate: \$13 PSF (Annual)
 Base Monthly Rent: \$29,791
 Lease Type: Modified Gross
 Loading: 2 Docks
 Ceiling: 28 ft.
 Drive-In Bays: 1 Bay



Overview/Comments

Great location between Carpenter & Platt Road, surrounded by established industries, retail and neighborhoods. Quick access to US-23. Easy drive to Ann Arbor, Detroit and surrounding areas.

Well maintained +/- 22K SF warehouse with professional front office, 2-story warehouse office, 2 docks and 1 drive in door and 28' high ceilings. Industrial racks for sale or lease. Plenty of parking available.

Flexible lease options, +/- 12,750 SF - 27,500 SF available.

More Information Online

<http://cie.cpix.net/listing/30779010>

QR Code

Scan this image with your mobile device:



General Information

Taxing Authority:	Pittsfield Township	Zoning:	GENERAL INDUSTRIAL
Tax ID/APN:	L -12-14-100-005	Land Area:	5.38 Acres
Industrial Type:	Manufacturing, Light Industrial, Warehouse/ Distribution, Other		

Available Space

Suite/Unit Number:	3530	Date Available:	01/03/2022
Space Available:	27,500 SF	Lease Rate:	\$13 PSF (Annual)
Minimum Divisible:	12,750 SF	Lease Type:	Modified Gross
Maximum Contiguous:	27,500 SF	Parking Spaces:	0
Space Subcategory 1:	Warehouse/Distribution	Loading Docks:	2
Space Subcategory 2:	Flex Space	Drive In Bays:	1
Space Type:	Relet	Ceiling Height:	28

Space Description Well maintained warehouse with a professional front office, 2-story warehouse office, 2 docks, 1 drive-in door, and 28' high ceilings. Industrial racks for sale or lease. Plenty of parking available. Flexible lease options, 12,250 SF - 27,500 SF available.

Area & Location

Property Located Between:	Carpenter Road & Platt Road
Highway Access:	US-23
Airports:	Ann Arbor Municipality, Willow Run and Detroit Metropolitan

Building Related

Tenancy:	Single Tenant	Number of Stories:	1
Total Number of Buildings:	1	Property Condition:	Good

Year Built:	1989	Sprinklers:	None
Roof Type:	Flat	Amps:	400
Parking Type:	Surface	Heat Type:	Natural Gas
Total Parking Spaces:	45	Heat Source:	Central, Ceiling Units
Passenger Elevators:	0	Air Conditioning:	Package Unit
Freight Elevators:	0	Internet Access:	Cable

Land Related

Water Service:	Well
Sewer Type:	Septic

Zoning Description The I General Industrial District is intended for light manufacturing, other limited industrial, wholesale, and warehousing uses. The district is intended for areas that have relative Pittsfield Township Zoning Ordinance 4:15 isolation from established neighborhoods in appropriate township locations to limit secondary impacts on adjacent uses including the generation of noise, glare, odor, dust, vibration, air and water pollutants, fire, explosive and radioactive hazards, and other harmful or obnoxious matter.

Legal Description COM AT N 1/4 COR, TH N 88 DEG 37' 40" E 20 FT ON N LN OF SEC TO POB, TH N 88 DEG 37' 40" E 245.11 FT, TH S 26 DEG 26' 40" E 932.69 FT, TH 237.16 FT ON ARC OF CURV-RADIUS 691.7 FT-CHORD S 63 DEG 43' 43" W 236 FT, TH N 26 DEG 26' 40" W 1005.95 FT, TH N 1 DEG 22' 20" W 33 FT TO POB

Location

Address:	3530 E Ellsworth Rd, Ann Arbor, MI 48108	MSA:	Ann Arbor
County:	Washtenaw	Submarket:	Washtenaw W of 23



Property Images



IMG_5110



IMG_5151



IMG_5156



IMG_5154



IMG_5155



IMG_5148



IMG_5157



IMG_5147



IMG_5124



IMG_5127



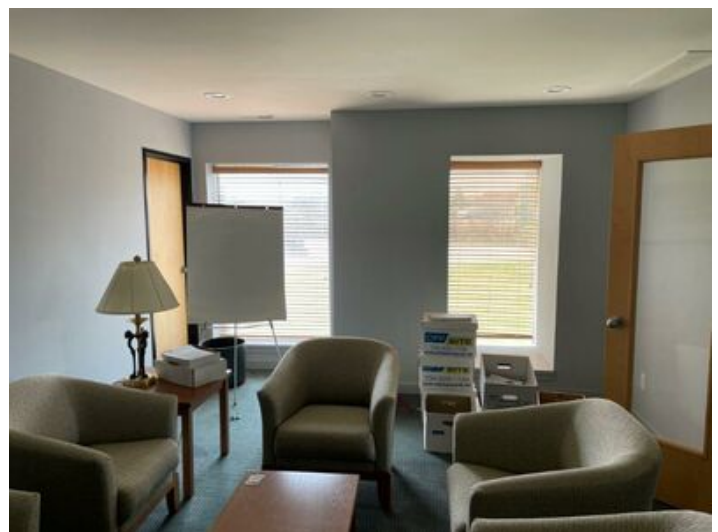
IMG_5123



IMG_5133



IMG_5125



IMG_5112



IMG_5132



IMG_5168



IMG_5166

Property Contacts



James H. Chaconas

Colliers International
734-994-3100 [0]
jim.chaconas@colliers.com